

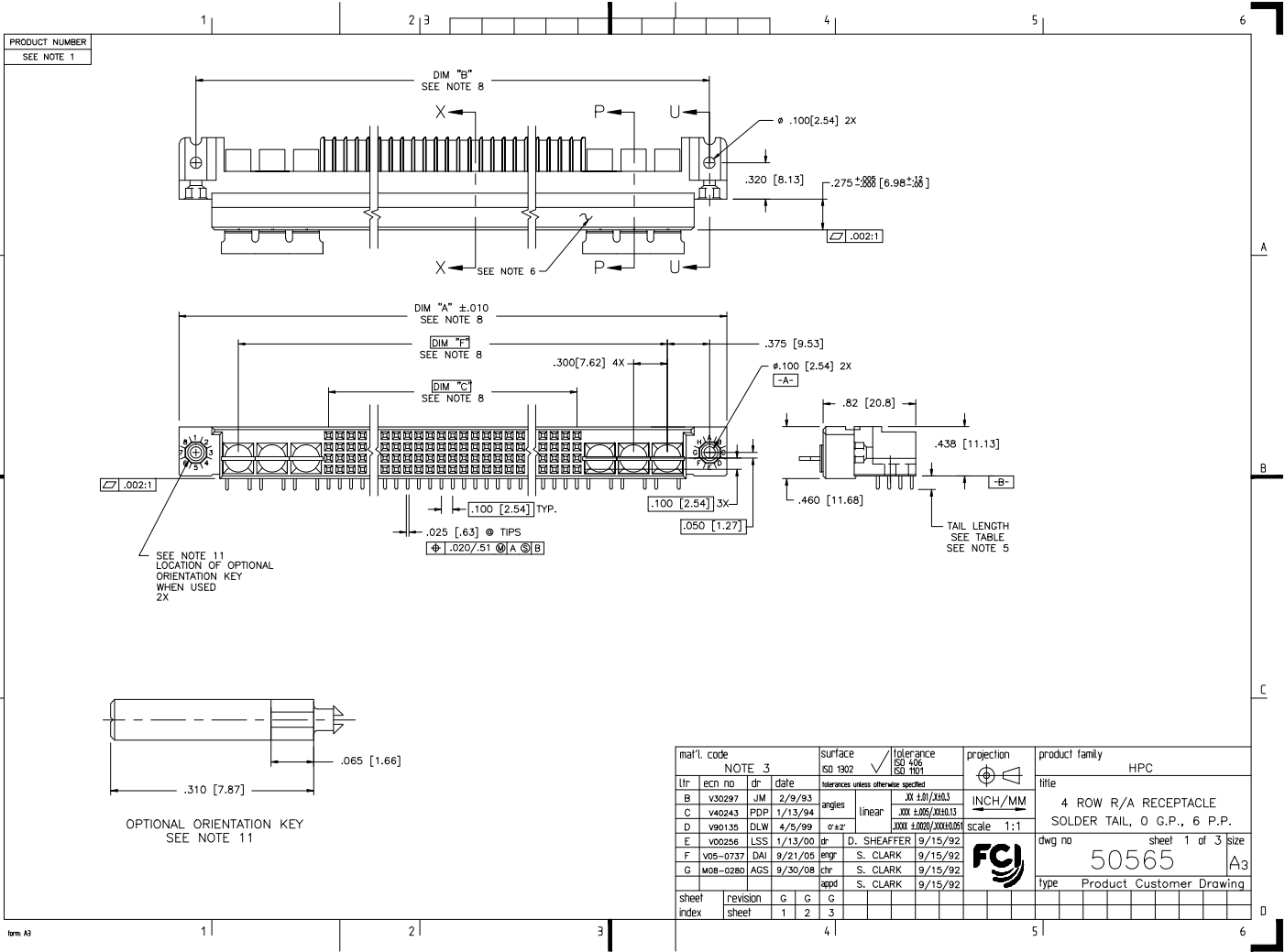
## Excellent Integrated System Limited

Stocking Distributor

Click to view price, real time Inventory, Delivery & Lifecycle Information:

[FCI](#)  
[50565-1040F](#)

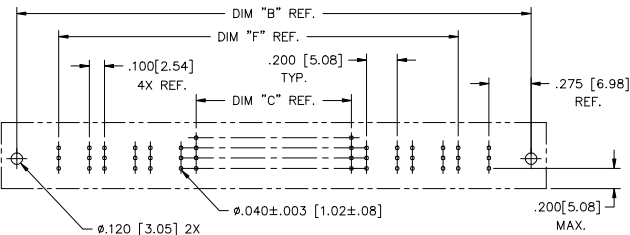
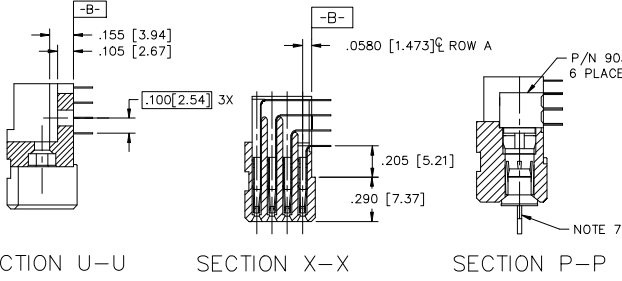
For any questions, you can email us directly:  
[sales@integrated-circuit.com](mailto:sales@integrated-circuit.com)



PRODUCT NUMBER  
SEE NOTE 1

NOTES:

1. PRODUCT NUMBERING CODE:  
50565 - X YYY Z LF  
 LEAD FREE (OPTIONAL)  
 TAIL LENGTH SEE TABLE, SEE NOTE 5  
 NO. OF POSITIONS SEE NOTE 2  
 PLATING SEE NOTE 4  
 BASE NUMBER
2. THIS PRODUCT IS CONFIGURED IN SIZES OF 6 THRU 80 COLUMNS IN INCREMENTS OF ONE. I.e.: 6,7,8,9.....79,80.
3. HOUSING MATERIAL: GLASS AND MINERAL FILLED HI-TEMP THERMOPLASTIC, FLAME RETARDANT PER UL94V-0 COLOR: BLANK CONTACT MATERIAL: BeCu
4. PLATING:  
SEE TABLE FOR CONTACT AREA AND SOLDER TAIL PLATING OF SIGNAL LINES.  
POWER CONTACTS ARE PLATED WITH 30μ"/.76μ MIN Au OR GXT, OR 50μ"/1.27μ MIN Ni IN CONTACT AREA AND HAVE THE SAME TAIL PLATING AS THE SIGNAL CONTACTS FOR CORRESPONDING PRODUCT NUMBER.
5. TAIL LENGTHS: ALL POWER TAILS ARE 1.45/3.68 SEE TABLE FOR SIGNAL TAIL LENGTHS
6. MANUFACTURER'S NAME, PART NUMBER AND LOT CODE TO APPEAR ON THIS SURFACE PER BUS-12-108.
7. POWER SOCKET LOCATOR (P/N 50233) TO BE REMOVED AFTER SOLDERING OPERATION.
8. LENGTH FORMULAS:  
 DIM A = 100/2.54 X NO. OF COLUMNS + 2.55/64.8  
 DIM B = 100/2.54 X NO. OF COLUMNS + 2.250/57.15  
 DIM C = 100/2.54 X NO. OF COLUMNS - .100/2.54  
 DIM F = 100/2.54 X NO. OF COLUMNS + 1.500/38.10
9. THE PRODUCTS (WITH "LF" SUFFIX) MEET EUROPEAN UNION DIRECTIVES AND OTHER COUNTRY REGULATIONS AS DESCRIBED IN GS-22-008.
10. THIS HOUSING WILL WITHSTAND EXPOSURE TO 260° C PEAK TEMPERATURE FOR 10-30 SECONDS IN A CONVECTION, INFRA-RED, VAPOR PHASE REFLOW OVEN.
11. WHERE APPLICABLE, THE OPTIONAL ORIENTATION KEYS ARE BAGGED SEPARATELY AND INCLUDED IN THE SAME BOX WITH THE CONNECTORS.
12. PLATING OPTION:  
MAY BE EITHER GOLD OR GXT PLATED AT MANUFACTURER'S OPTION.



RECOMMENDED PCB LAYOUT  
(ALL HOLES LOCATED ON .100 [2.54] GRID UNLESS OTHERWISE SPECIFIED)

mat'l. code	NOTE 3	surface ISO 1902	tolerance ISO 406 ISO 1101	projection	product family
tr	ecm no	dr	date	tolerances unless otherwise specified	title
G				linear	4 ROW R/A RECEPTACLE SOLDER TAIL, 0 G.P., 6 P.P.
				angles	INCH/MM
				ø±z	scale 1:1
		dr	D. SHEAFFER 9/15/92		dwg no
		engr	S. CLARK 9/15/92		50565
		chr	S. CLARK 9/15/92		sheet 2 of 3 size
		appd	S. CLARK 9/15/92		A3
sheet index	revision sheet				Type Product Customer Drawing

PRODUCT NUMBER	NUMBER OF POSITIONS SEE NOTE 2	OPTIONAL ORIENTATION KEY SEE NOTE 11	TAIL LENGTH OF SIGNAL TAILS	SOLDER TAIL PLATING	CONTACT AREA PLATING SEE NOTE 4 & 11
50565 -1YYYE	YYY	-	.125±.010/3.18±0.25	TIN-LEAD	30μ"/0.76μ GOLD
50565 -1YYYF	YYY	-	.145±.010/3.68±0.25	TIN-LEAD	30μ"/0.76μ GOLD
50565 -1YYYH	YYY	-	.180±.010/4.57±0.25	TIN-LEAD	30μ"/0.76μ GOLD
50565 -3YYYE	YYY	-	.125±.010/3.18±0.25	TIN-LEAD	50μ"/1.27μ GOLD
50565 -3YYYF	YYY	-	.145±.010/3.68±0.25	TIN-LEAD	50μ"/1.27μ GOLD
50565 -3YYYH	YYY	-	.180±.010/4.57±0.25	TIN-LEAD	50μ"/1.27μ GOLD
50565 -5YYYE	YYY	-	.125±.010/3.18±0.25	TIN-LEAD	30μ"/0.76μ GXT
50565 -5YYYELF	YYY	-	.125±.010/3.18±0.25	TIN	30μ"/0.76μ GXT
50565 -5YYYF	YYY	-	.145±.010/3.68±0.25	TIN-LEAD	30μ"/0.76μ GXT
50565 -5YYYFLF	YYY	-	.145±.010/3.68±0.25	TIN	30μ"/0.76μ GXT
50565 -5YYYH	YYY	-	.180±.010/4.57±0.25	TIN-LEAD	30μ"/0.76μ GXT
50565 -5YYYHLF	YYY	-	.180±.010/4.57±0.25	TIN	30μ"/0.76μ GXT
50565 -XX006	60	YES	.125±.010/3.18±0.25	TIN-LEAD	30μ"/0.76μ GOLD
50565 -XX006LF	60	YES	.125±.010/3.18±0.25	TIN	30μ"/0.76μ GXT
50565 -XX006A	60	-	.125±.010/3.18±0.25	TIN-LEAD	30μ"/0.76μ GOLD
50565 -XX006ALF	60	-	.125±.010/3.18±0.25	TIN	30μ"/0.76μ GXT
50565 -XX007	60	YES	.125±.010/3.18±0.25	TIN-LEAD	30μ"/0.76μ GOLD
50565 -XX007LF	60	YES	.125±.010/3.18±0.25	TIN	30μ"/0.76μ GXT
50565 -XX007A	60	-	.125±.010/3.18±0.25	TIN-LEAD	30μ"/0.76μ GOLD
50565 -XX007ALF	60	-	.125±.010/3.18±0.25	TIN	30μ"/0.76μ GXT

mat'l. code				surface	tolerance	projection	product family
NOTE 3				ISO 1902	ISO 406		HPC
ltr	ecm no	dr	date	tolerances unless otherwise specified			title
G				angles	linear	INCH/MM	4 ROW R/A RECEPTACLE
				size	XXX #10/XXXL3	scale 1:1	SOLDER TAIL, 0 G.P., 6 P.P.
				dr	D. SHEAFFER 9/15/92		dwg no
				enrg	S. CLARK 9/15/92		50565
				chr	S. CLARK 9/15/92		sheet 3 of 3 size
				appd	S. CLARK 9/15/92		A3
sheet index	revision sheet						Type Product Customer Drawing