

Excellent Integrated System Limited

Stocking Distributor

Click to view price, real time Inventory, Delivery & Lifecycle Information:

[FCI](#)

[51710-020LF](#)

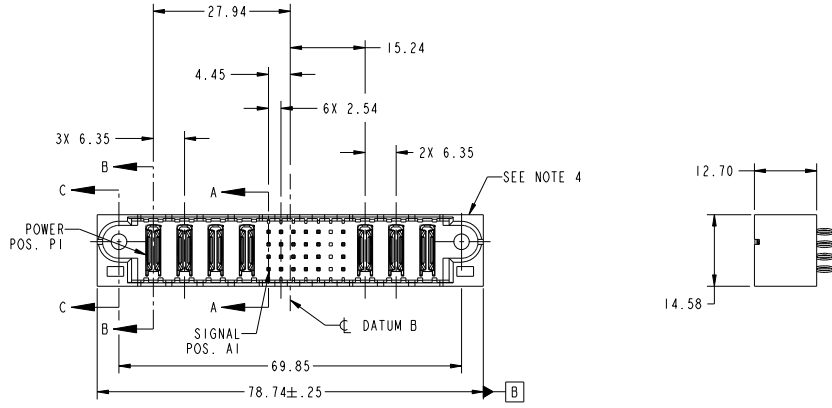
For any questions, you can email us directly:

sales@integrated-circuit.com

Tous droits strictement réservés. Reproduction ou communication à des tiers interdite sous quelque forme que ce soit sans autorisation écrite du propriétaire. Propriété de FCI. Droits de reproduction FCI.

All rights strictly reserved. Reproduction or issue to third parties in any form whatever is not permitted without written authority from the proprietor. Property of FCI. Copyright FCI.

PRODUCT NO.	ROWS	POWER				SIGNAL				POWER			E2			
		E1	P1	P2	P3	P4	1	2	3	4	5	6		7	P5	P6
51710-020- NOTE: 3	D C B A	PC	PC	PC	PC	PC	K	K	K	K	K	K	K	PC	PC	PC



CODE	DIM "M" MATING LENGTH	CONTACT TYPE
PC	[N/A]	POWER
K	[5.59]	SIGNAL
G	[6.86]	SIGNAL
X	OMITTED	OMITTED

mat'l code				tolerances unless otherwise specified		CUSTOMER		FCI	
lfr	ecm no.	dr	date	0.X ±0.5	COPY	www.fciconnect.com			
A	DG06-0040	RYAN	02/09/06	0.XX ±0.25	projection	title 4P + 28S + 3P			
B	DG07-0357	JULIA	09/10/07	0.XXX ±0.10	MM	VERTICAL PF HEADER			
C	DG08-0273	JW	12/05/08	0" ±.2		scale: 1:1	product family	size	dwg no
						A	51710-020	213	sheet
sheet index	revision sheet	C 1	C 2	C 3	C 4				1 of 4

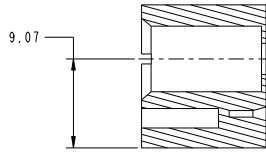
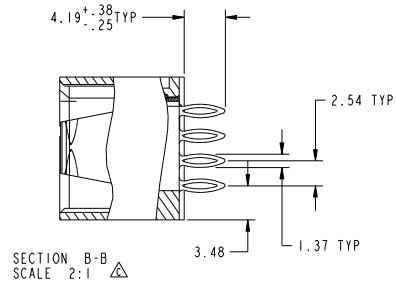
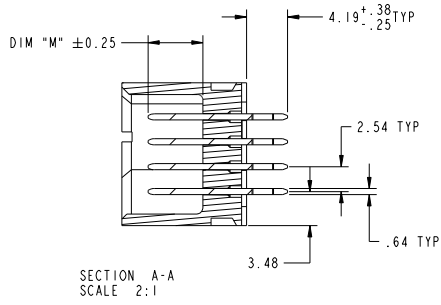
cage code 22526

Tous droits strictement réservés. Reproduction ou communication à des tiers interdite sous quelque forme que ce soit sans autorisation écrite du propriétaire. Propriété de FCI. Droits de reproduction FCI.

All rights strictly reserved. Reproduction or issue to third parties in any form whatever is not permitted without written authority from the proprietor. Property of FCI. Copyright FCI.



PRODUCT NUMBER
51710-020-
NOTE: 3



mat'l code		SEE NOTE		tolerances unless otherwise specified		CUSTOMER		FCI	
ltr	ecm no.	dr	date	linear	0.X ±0.5	COPY		www.fciconnect.com	
c					0.XX ±0.25	projection	title		
				angles	0.XXX ±0.10		4P + 28S + 3P		
				dr	0° ±2°	MM	product family	PwrBlade	
				enr	RYAN YUAN 02/09/06	scale	size	dwg no	code
				chr	STEVEN WANG 02/13/06	1:1	A	51710-020	213
				oppd	BEER FU 02/09/06				sheet
					JOSEPH HSIA 02/09/06				2
sheet index	revision sheet								

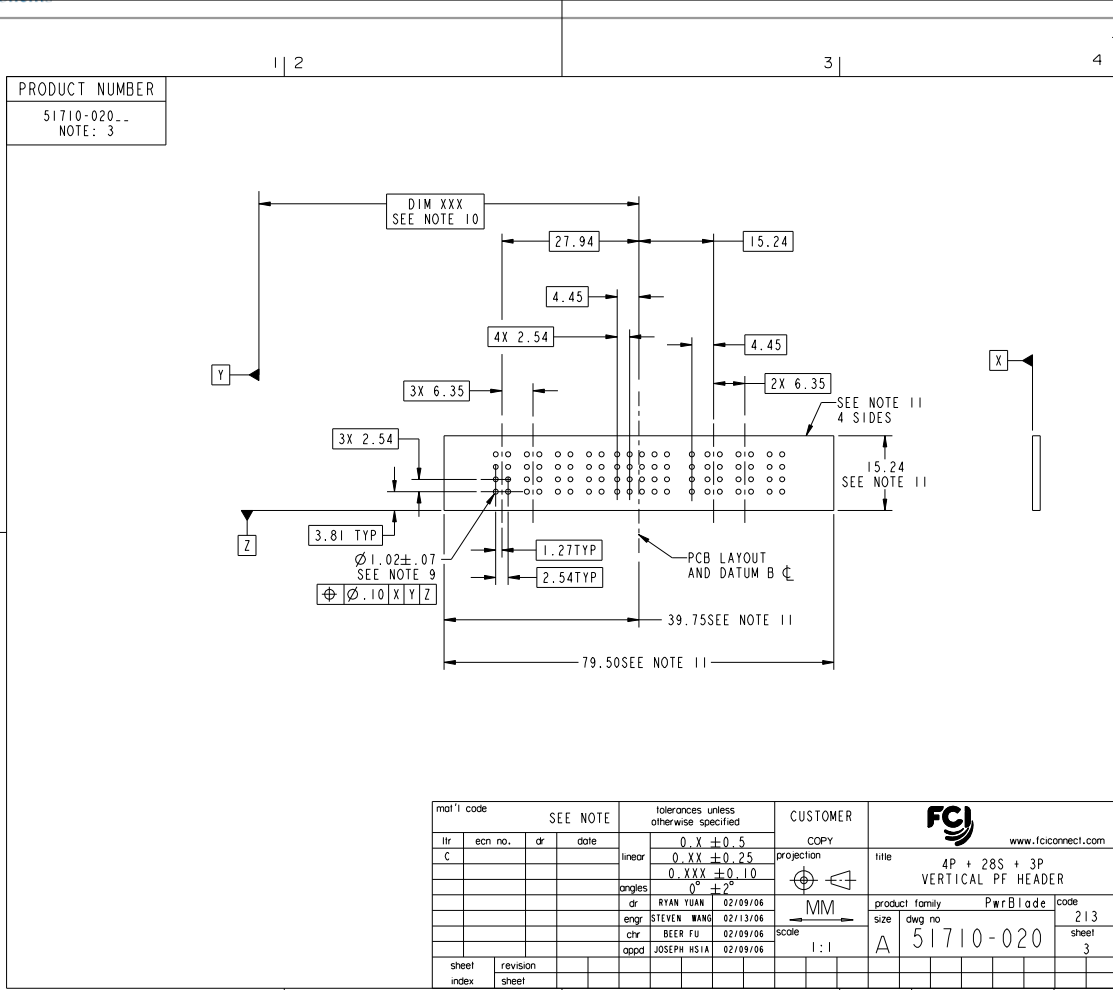
Pro/E

cage code 22526

Tous droits strictement réservés. Reproduction ou communication à des tiers interdite sous quelque forme que ce soit sans autorisation écrite du propriétaire. Propriété de FCI. Droits de reproduction FCI.



All rights strictly reserved. Reproduction or issue to third parties in any form whatever is not permitted without written authority from the proprietor. Property of FCI. Copyright FCI.



mat'l code		SEE NOTE		tolerances unless otherwise specified		CUSTOMER	
lfr	ecn no.	dr	date	linear	0.X ±0.5	COPY	www.fciconnect.com
C					0.XX ±0.25	projection	4P + 28S + 3P
				angles	0.XXX ±0.10		VERTICAL PF HEADER
				dr	0° ±2°	MM	product family PwrBlade
				enr	RYAN YUAN 02/09/06	scale	size
				chr	STEVEN WANG 02/13/06	1:1	dwg no
				oppd	BEER FU 02/09/06		51710-020
					JOSEPH HSIA 02/09/06		code
sheet index	revision sheet						213 sheet
							3
							cage code
							22526

Tous droits strictement réservés. Reproduction ou communication à des tiers interdite sous quelque forme que ce soit sans autorisation écrite du propriétaire. Propriété de FCI. Droits de reproduction FCI.

All rights strictly reserved. Reproduction or issue to third parties in any form whatever is not permitted without written authority from the proprietor. Property of FCI. Copyright FCI.


PRODUCT NUMBER
51710-020-
NOTE: 3

NOTES:

1. DIMENSIONS AND TOLERANCES ARE IN ACCORDANCE WITH ASME Y14.5M, 1994 UNLESS OTHERWISE SPECIFIED.

CONNECTOR NOTES:

- ② HOUSING MATERIAL: UL 94 V-0 GLASS FILLED HIGH-TEMP THERMOPLASTIC
POWER CONTACT MATERIAL: COPPER ALLOY
SIGNAL PIN MATERIAL: COPPER ALLOY
 - 3. PLATING:
SEE ITEM 3 & 4 IN PRINT 10064183 FOR PLATING SPEC OF 51710-020; 51710-020LF RESPECTIVELY
 - ④ MANUFACTURER'S NAME, P/N, AND DATE CODE TO APPEAR ON THIS SURFACE.
 - 5. PRODUCT SPECIFICATION GS-12-149.
APPLICATION SPECIFICATION BUS-20-067.
 - 6. PACKAGED IN TRAYS.
- PCB NOTES:
- 7. ALL HOLE DIAMETERS ARE FINISHED HOLE SIZE.
 - 8. MOUNTING HOLES, WHERE APPLICABLE, ARE UNPLATED.
 - ⑨ $\varnothing 1.151 \pm 0.025$ DRILLED HOLES PLATED WITH 0.008 MIN SnPb OR Sn OVER 0.03 TO 0.08 Cu PLATING TO ACHIEVE $\varnothing 1.02 \pm .07$ HOLE.
 - ⑩ "DIM XXX" TO BE DETERMINED BY THE CUSTOMER.
 - ⑪ CONNECTOR KEEP-OUT ZONE.
12. FOR PRESS FIT APPLICATION USE FCI CAM TOOL 430169-XXX.
13. A Δ SYMBOL WILL BE NEXT TO ANY DIMENSION, VIEW, OR NOTE WHICH HAS BEEN MODIFIED WITH THE CURRENT DRAWING REVISION.

SEE NOTE				tolerances unless otherwise specified		CUSTOMER	
ltr	ecm no.	dr	date	linear	0.X ± 0.5	COPY	FCI www.fciconnect.com
C				linear	0.XX ± 0.25	projection	
				angles	0.XXX ± 0.10	 M M scale: 1:1	title 4P + 28S + 3P VERTICAL PF HEADER
				dr	0° ± 2°		product family PwrBlade
				engr	RYAN YUAN 02/09/06	size	dwg no 51710-020
				chr	STEVEN WANG 02/13/06	sheet	4
				oppd	BEER FU 02/09/06		
					JOSEPH HSIA 02/09/06		
sheet index	revision sheet						

cage code 22526