

Excellent Integrated System Limited

Stocking Distributor

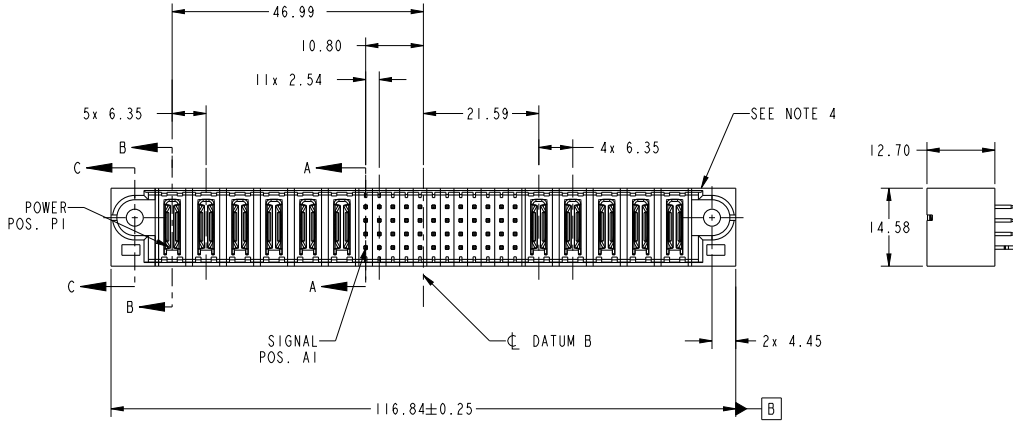
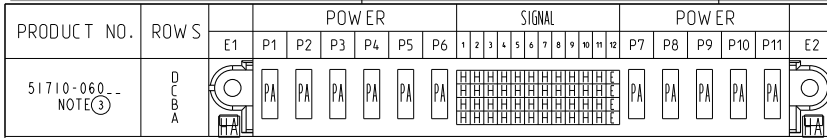
Click to view price, real time Inventory, Delivery & Lifecycle Information:

[FCI](#)

[51710-060LF](#)

For any questions, you can email us directly:

sales@integrated-circuit.com



CODE	DIM "M" MATING LENGTH	CONTACT TYPE
PA	[N/A]	POWER
H	[5.59]	SIGNAL
E	[6.86]	SIGNAL
HA	[N/A]	HOLD-DOWN

spec ref	See Notes	dr	Ruan MT	2013/05/14	projection		MM	size	A4	scale	1:1
tolerance std	TOLERANCES UNLESS OTHERWISE SPECIFIED	eng	Ruan MT	2013/05/29		product family	PwrBlade	ecn no	-	rel level	Released
See Notes		chr	-	-				cat. no.	6P + 48S + 5P	model name	VERTICAL SOLDER HEADER
surface	linear	0.X	±0.50		Product - Customer Drw		sheet 1 of 4				
		0.XX	±0.25								
		0.XXX	±0.10								
	angular	0°	±2°								

Print File : REV C - 2009-08-09

1

2

3

PDS: Rev :A

STATUS:Released

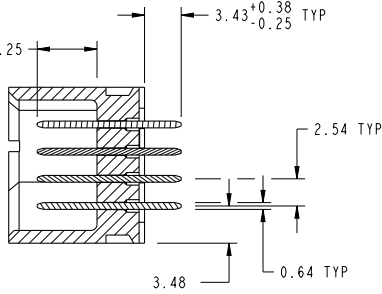
Printed: May 30, 2013



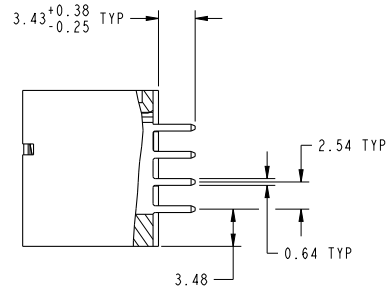
Copyright FCI.

PRODUCT NUMBER
51710-060--
NOTE 3

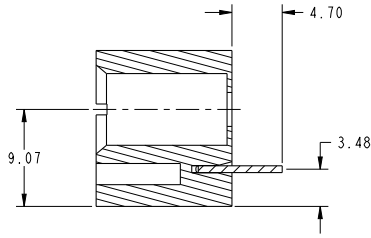
DIM "M" ±0.25



SECTION A-A
SCALE 2:1



SECTION B-B
SCALE 2:1



SECTION C-C
SCALE 2:1

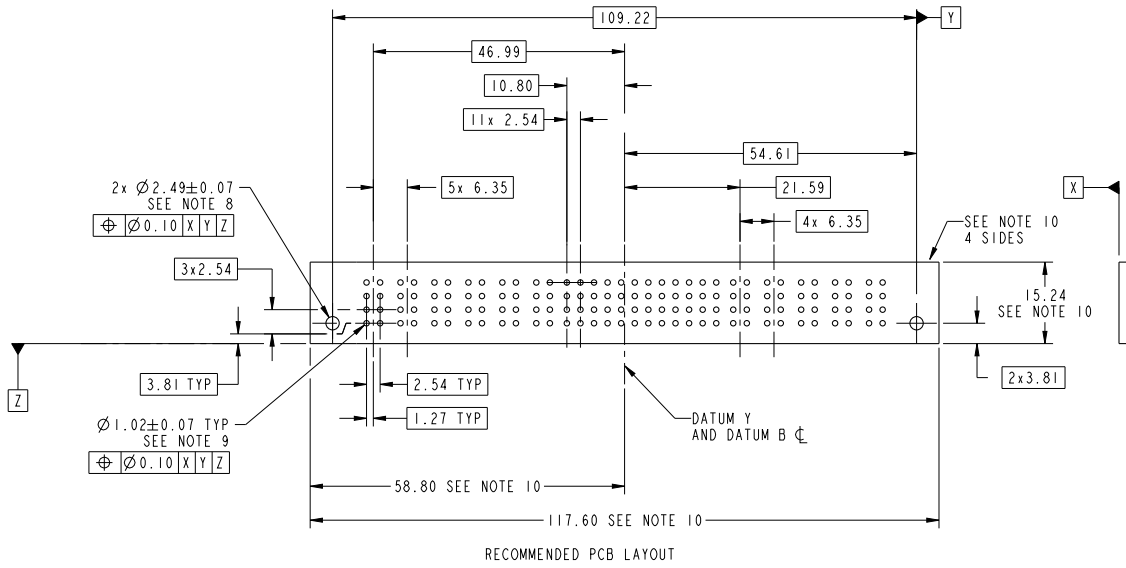
dr	Ruan MT	2013/05/14	projection	MM	size	A4	scale	1:1
eng	Ruan MT	2013/05/29			ecn no	-		
chr	-	-	product family	PwrBlade	rel level	Released		
appr	Pei-Ming Zheng	2013/05/29				title 6P + 48S + 5P VERTICAL SOLDER HEADER	dwg no 51710-060	rev A
www.fci.com		cat. no.	&model_name	Product - Customer Drw	sheet 2 of 4			

Print File : REV C - 2009-08-09



Copyright FCI.

PRODUCT NUMBER
51710-060--
NOTE 3



dr	Ruan MT	2013/05/14	projection	MM	size	A4	scale	1:1			
eng	Ruan MT	2013/05/29			ecn no	-	rel level	Released			
chr	-	-			product family	PwrBlade					
appr	Pei-Ming Zheng	2013/05/29			6P + 48S + 5P VERTICAL SOLDER HEADER		www.fci.com	cat. no.	&model_name	Product - Customer Drw	sheet 3 of 4
					dwg no	51710-060		rev	A		

Print File : REV C - 2009-06-09

PDS: Rev :A

STATUS:Released

Printed: May 30, 2013

PRODUCT NUMBER
51710-060...
NOTE 3

NOTES:

1. DIMENSIONS AND TOLERANCES ARE IN ACCORDANCE WITH ASME Y14.5M, 1994 UNLESS OTHERWISE SPECIFIED.

CONNECTOR NOTES:

2 HOUSING MATERIAL: UL 94 V-0 GLASS FILLED HIGH-TEMP THERMOPLASTIC
POWER CONTACT MATERIAL: COPPER ALLOY
SIGNAL PIN MATERIAL: COPPER ALLOY

3. SEE ITEM 1 & 2 IN PRINT 10064183 FOR PLATING SPEC OF 51710-060 AND 51710-060LF RESPECTIVELY.

4 MANUFACTURER'S NAME, DATE CODE AND OPTIONAL P/N TO APPEAR ON THIS SURFACE, THE MARK CAN BE OMITTED IF THERE IS NOT ENOUGH SPACE ON THIS SURFACE.

5. PRODUCT SPECIFICATION GS-12-149.
APPLICATION SPECIFICATION BUS-20-067.

6. PACKAGED IN TRAYS.

PCB NOTES:

7. ALL HOLE DIAMETERS ARE FINISHED HOLE SIZE.
8. MOUNTING HOLES, WHERE APPLICABLE, ARE UNPLATED.

9 $\varnothing 1.151 \pm 0.025$ DRILLED HOLES PLATED WITH 0.008 MIN SnPb OR Sn OVER .001 [0.03] TO 0.08 Cu PLATING TO ACHIEVE $\varnothing 1.02 \pm 0.07$ HOLE.

10 CONNECTOR KEEP-OUT ZONE.



Copyright FCI.

dr	Ruan MT	2013/05/14	projection		MM	size	A4	scale	1:1		
eng	Ruan MT	2013/05/29				ecn no	-				
chr	-	-	product family	PwrBlade	rel level	Released					
appr	Pei-Ming Zheng	2013/05/29			title	6P + 48S + 5P		dwg no	51710-060	rev	A
www.fci.com		cat. no.	&model_name		Product - Customer Drw			sheet 4 of 4			

Print File - REV C - 2009-06-09