

## Excellent Integrated System Limited

Stocking Distributor

Click to view price, real time Inventory, Delivery & Lifecycle Information:

[FCI](#)

[51711-005LF](#)

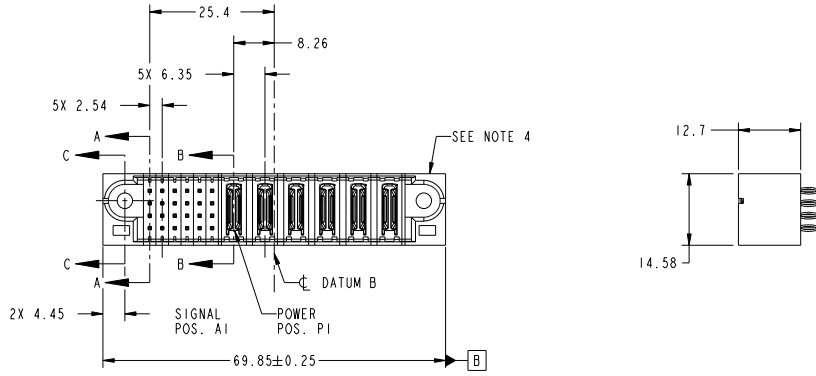
For any questions, you can email us directly:

[sales@integrated-circuit.com](mailto:sales@integrated-circuit.com)

Tous droits strictement réservés. Reproduction ou communication à des tiers interdite sous quelque forme que ce soit sans autorisation écrite du propriétaire. Propriété de E. FCI. Droits de reproduction FCI.

All rights strictly reserved. Reproduction or issue to third parties in any form whatever is not permitted without written authority from the proprietor. Property of FCI. Copyright FCI.

PRODUCT NO.	ROWS	SIGNAL				POWER										
		E1	1	2	3	4	5	6	P1	P2	P3	P4	P5	P6	E2	
51711-005-- NOTE ③	D C B A	G	G	G	G	R	R	R	R	PC	PC	PC	PC	PC	PC	



CODE	DIM "M" MATING LENGTH	CONTACT TYPE
PC	[N/A]	POWER
K	[5.59]	SIGNAL
G	[6.86]	SIGNAL

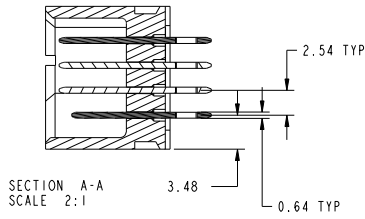
mat'l code				tolerances unless otherwise specified		CUSTOMER	
ltr	ecm no.	dr	date	linear	0.X ± 0.5	COPY	www.fciconnect.com
A	D009-0142	JW	05/08/09		0.XX ± 0.25	projection	title
				angles	0.XXX ± 0.1	MM	24S + 6P
				dr	0° ± 2°	scale	VERTICAL PRESS-FIT HEADER
				enr	JULIA WANG 05/08/09	1:1	product family
				chr	JEROME CHEN 05/08/09		PwrBlade
				oppd	PW ZHENG 05/08/09		code
					JOSEPH HSIA 05/08/09		size
sheet index	revision sheet	A 1	A 2	A 3	A 4		dwg no
							51711-005
							213 sheet 1 of 4
							cage code
							22526

Tous droits strictement réservés. Reproduction ou communication à des tiers interdite sous quelque forme que ce soit sans autorisation écrite du propriétaire. Propriété de FCI. Droits de reproduction FCI.

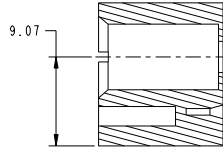
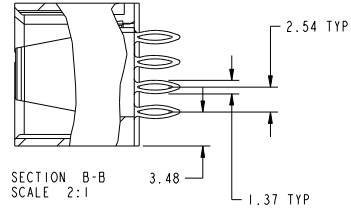
All rights strictly reserved. Reproduction or issue to third parties in any form whatever is not permitted without written authority from the proprietor. Property of FCI. Copyright FCI.

PRODUCT NUMBER  
51711-005...  
NOTE 3

DIM "M" ±0.25



4.19 +0.38 / -0.25 TYP



SECTION C-C  
SCALE 2:1

mat'l code				tolerances unless otherwise specified		CUSTOMER		FCI	
ltr	ecm no.	dr	date	linear	0.X ±0.5	COPY		www.fciconnect.com	
A					0.XX ±0.25	projection	title		
				angles	0.XXX ±0.1		24S + 6P		
					0° ±2°	MM	VERTICAL PRESS-FIT HEADER		
				dr	JULIA WANG 05/08/09	scale	product family	PwrBlade	code
				enr	JEROME CHEN 05/08/09	1:1	size	dwg no	213
				chr	PW ZHENG 05/08/09		A	51711-005	sheet
				oppd	JOSEPH HSIA 05/08/09				2 of 4
sheet index	revision sheet								

Pro/E

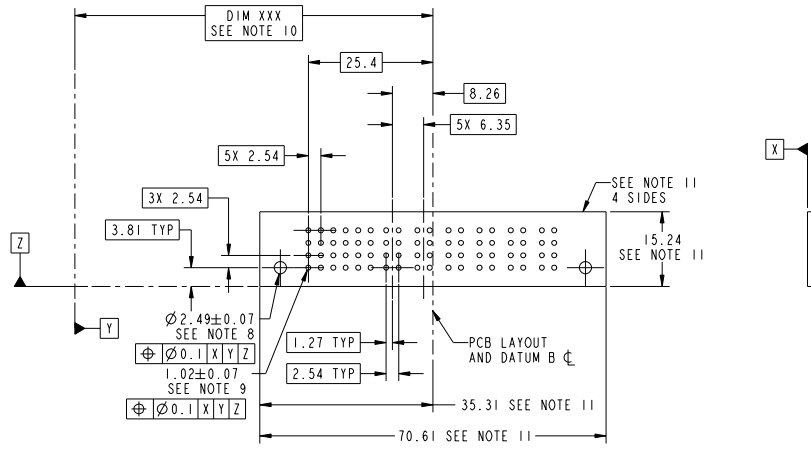
cage code 22526

Tous droits strictement réservés. Reproduction ou communication à des tiers interdite sous quelque forme que ce soit sans autorisation écrite du propriétaire. Propriété de FCI. Droits de reproduction FCI.



All rights strictly reserved. Reproduction or issue to third parties in any form whatever is not permitted without written authority from the proprietor. Property of FCI. Copyright FCI.

PRODUCT NUMBER  
51711-005...  
NOTE 3



mat'l code				tolerances unless otherwise specified		CUSTOMER	
ltr	ecm no.	dr	date	linear	0.X ± 0.5	COPY	www.fciconnect.com
A				linear	0.XX ± 0.25	projection	title
				angles	0° ± 2°		24S + 6P
				dr	JULIA WANG 05/08/09	MM	VERTICAL PRESS-FIT HEADER
				enrg	JEROME CHEN 05/08/09	scale	product family PwrBlade
				chr	PM ZHENG 05/08/09	1:1	size
				oppd	JOSEPH HSIA 05/08/09		dwg no
sheet index	revision sheet						51711-005
							code
							213
							sheet
							3 of 4

cage code 22526

Tous droits strictement réservés. Reproduction ou communication à des tiers interdite sous quelque forme que ce soit sans autorisation écrite du propriétaire. Propriété de FCI. Droits de reproduction FCI.

All rights strictly reserved. Reproduction or issue to third parties in any form whatever is not permitted without written authority from the proprietor. Property of FCI. Copyright FCI.

PRODUCT NUMBER  
51711-005\_  
NOTE 3

NOTES:

1. DIMENSIONS AND TOLERANCES ARE IN ACCORDANCE WITH ASME Y14.5M, 1994 UNLESS OTHERWISE SPECIFIED.

CONNECTOR NOTES:

- ② HOUSING MATERIAL: UL 94 V-0 GLASS FILLED HIGH-TEMP THERMOPLASTIC  
POWER CONTACT MATERIAL: COPPER ALLOY  
SIGNAL PIN MATERIAL: COPPER ALLOY
  - 3. PLATING:  
SEE ITEM 3 & 4 IN PRINT 10064183 FOR PLATING SPEC OF 51711-005, 51711-005LF RESPECTIVELY.
  - ④ MANUFACTURER'S NAME, P/N, AND DATE CODE TO APPEAR ON THIS SURFACE.
  - 5. PRODUCT SPECIFICATION GS-12-149.  
APPLICATION SPECIFICATION BUS-20-067.
  - 6. PACKAGED IN TRAYS.
- PCB NOTES:
- 7. ALL HOLE DIAMETERS ARE FINISHED HOLE SIZE.
  - 8. MOUNTING HOLES, WHERE APPLICABLE, ARE UNPLATED.
  - ⑨  $\varnothing 1.151 \pm 0.025$  DRILLED HOLES PLATED WITH 0.008 MIN SnPb OR Sn OVER .001 (.03) TO 0.08 Cu PLATING TO ACHIEVE  $\varnothing 1.02 \pm .07$  HOLE.
  - ⑩ "DIM XXX" TO BE DETERMINED BY THE CUSTOMER.
  - ⑪ CONNECTOR KEEP-OUT ZONE.
12. FOR PRESS FIT APPLICATION USE FCI CAM TOOL 430169-XXX.

mat'l code				tolerances unless otherwise specified		CUSTOMER		FCI	
ltr	ecm no.	dr	date	linear	0.X ± 0.5	COPY		www.fciconnect.com	
A				linear	0.XX ± 0.25	projection	title		
				angles	0.XXX ± 0.1		24S + 6P		
				dr	0° ± 2°		VERTICAL PRESS-FIT HEADER		
				engr	JULIA WANG 05/08/09	product family	PwrBlade	code	213
				chr	JEROME CHEN 05/08/09	size	dwg no	sheet	4 of 4
				oppd	PW ZHENG 05/08/09	scale	A 51711-005		
					JOSEPH HSIA 05/08/09				
sheet index	revision sheet								

Pro/E

cage code 22526