

Excellent Integrated System Limited

Stocking Distributor

Click to view price, real time Inventory, Delivery & Lifecycle Information:

[FCI](#)

[51730-112LF](#)

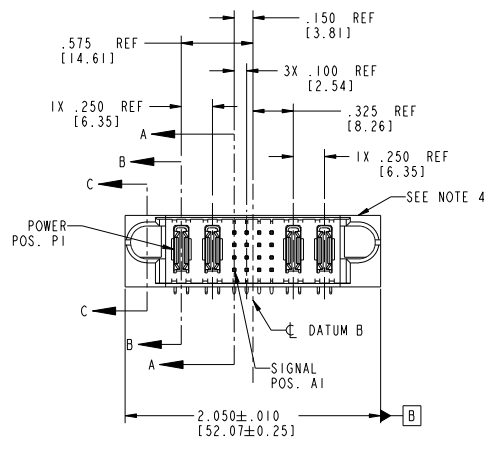
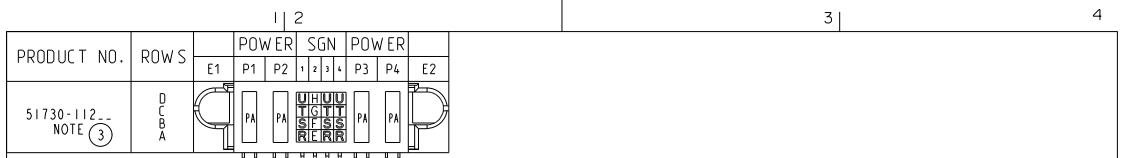
For any questions, you can email us directly:

sales@integrated-circuit.com

Tous droits strictement réservés. Reproduction ou communication, en des lieux interdites sans autorisation écrite du propriétaire. Propriété de FCI. Droits de reproduction FCI.



All rights strictly reserved. Reproduction or issue in third parties, in any form without written authority from the proprietor. Property of FCI. Copyright FCI.



CODE	DIM "M" MATING LENGTH	CONTACT TYPE
U	.270 [6.86]	SIGNAL
T	.270 [6.86]	SIGNAL
S	.270 [6.86]	SIGNAL
R	.270 [6.86]	SIGNAL
PA	N/A [N/A]	POWER
E	.220 [5.59]	SIGNAL
F	.220 [5.59]	SIGNAL
G	.220 [5.59]	SIGNAL
H	.220 [5.59]	SIGNAL

mat'l code				SEE NOTE 2		tolerances unless otherwise specified	
ltr	ecr no.	dr	date	linear	XX±.01/0.XX±0.3	projection	
A	DG05-0189	LH	06/24/05		XX±.005/0.XX±0.13	projection	
B	DG05-0455	CS	11/12/05		XXX±.002/0.XX±0.051	projection	
C	DG08-0253	SH	09/13/08	angles	0°±	projection	
				dr	LH 06/24/05	INCH/MM	
				enrg	LH 06/24/05	scale	1:1
				chr	VICTOR LIN 06/24/05		
				oppd	JOSEPH HSTA 06/24/05		
sheet index	revision sheet	C	C	C	C		
		1	2	3	4		

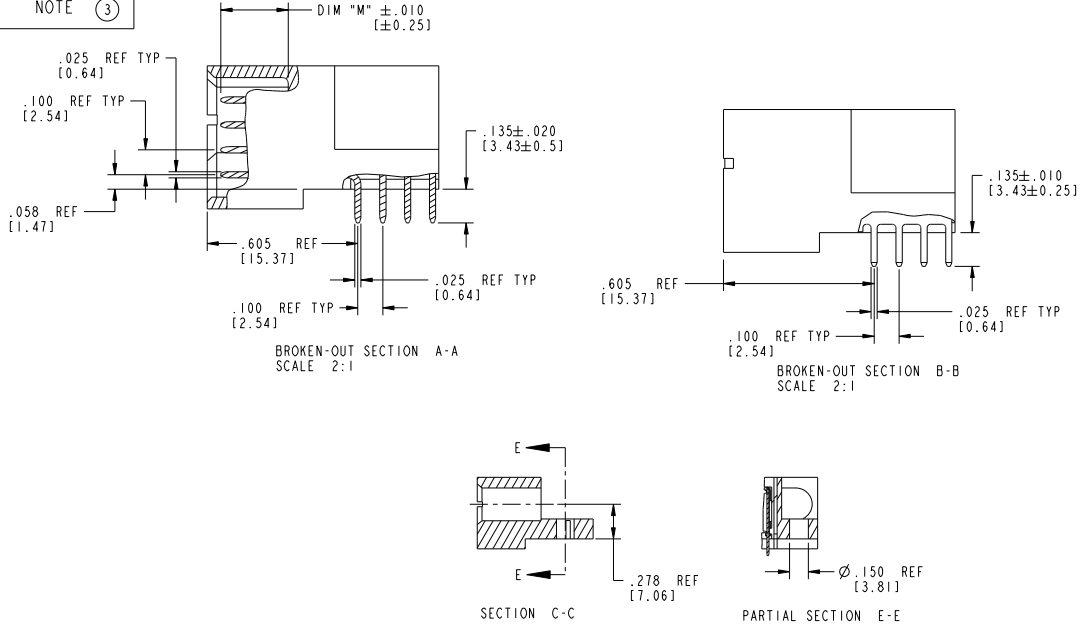
CUSTOMER		FCI	
COPY		www.fciconnect.com	
title		2P + 16S + 2P	
RIGHT ANGLE SOLDER HEADER		product family PwrBlade code 213	
size		dwg no 51730-112 sheet 1 of 4	
scale		A	
cage code		22526	

Tous droits strictement réservés. Reproduction ou communication de ces lignes interdit sans autorisation écrite du propriétaire. Propriété de FCI. Droits de reproduction FCI.



All rights strictly reserved. Reproduction or issue in any form without written authority from the proprietor. Property of FCI. Copyright FCI.

PRODUCT NUMBER
51730-112
NOTE (3)



mat'l code		SEE NOTE 2	tolerances unless otherwise specified		CUSTOMER	www.fciconnect.com
lfr	ecm no.	dr	date	linear	COPY	
C				$.XX \pm .01 / 0 .XX \pm 0.3$	projection	title
				$.XXX \pm .005 / 0 .XX \pm 0.13$		2P + 16S + 2P
				$.XXX \pm .0020 / 0 .XX \pm 0.051$	INCH/MM	RIGHT ANGLE SOLDER HEADER
				$0 \pm .0$	scale	product family
				dr	1:1	PwrBlade
				enr		size
				chr		dwg no
				appd		51730-112
						code
						213
						sheet
						2 of 4
sheet index	revision sheet					

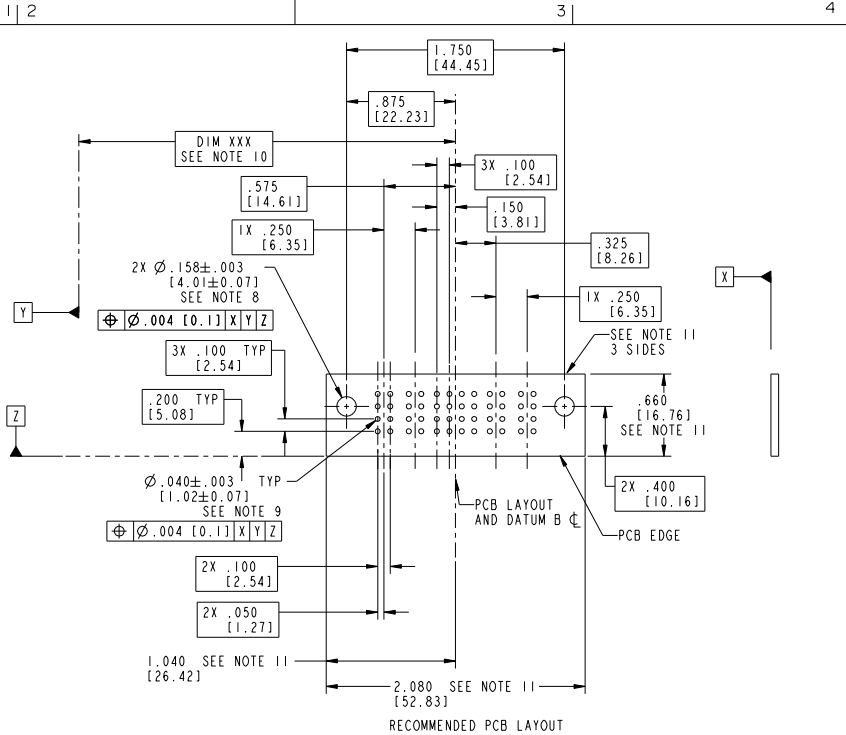
Pro/E 3 cage code 22526 4

Tous droits strictement réservés. Reproduction ou communication, en des lieux interdite sans aucune forme que ce soit sans autorisation écrite du propriétaire. Propriété de c FCI. Droits de reproduction FCI.



All rights strictly reserved. Reproduction or issue in any form anywhere is not permitted without written authority from the proprietor. Property of FCI. Copyright FCI.

PRODUCT NUMBER
51730-112-
NOTE (3)



mat'l code		SEE NOTE 2	tolerances unless otherwise specified	CUSTOMER	
lfr	ecn no.	dr	date	linear	projection
C				linear	2P + 16S + 2P
				angles	RIGHT ANGLE SOLDER HEADER
				dr	product family PwrBlade
				enr	size
				chr	dwg no
				appd	51730-112
sheet index	revision sheet			scale	213
				1:1	3 of 4

Pro/E 3 cage code 22526 4

Tous droits strictement réservés. Reproduction ou communication, en tout ou en partie, sans autorisation écrite du propriétaire. Propriété de FCI. Droits de reproduction FCI.

All rights strictly reserved. Reproduction or issue in any form without written authority from the proprietor. Property of FCI. Copyright FCI.

PRODUCT NUMBER
51730-112-
NOTE (3)

NOTES:

1. DIMENSIONS AND TOLERANCES ARE IN ACCORDANCE WITH ASME Y14.5M, 1994 UNLESS OTHERWISE SPECIFIED.

CONNECTOR NOTES:

(2) HOUSING MATERIAL: UL 94 V-0 GLASS FILLED HIGH-TEMP THERMOPLASTIC
POWER CONTACT MATERIAL: COPPER ALLOY
SIGNAL PIN MATERIAL: COPPER ALLOY

3. PLATING:
SEE ITEM 1 & 2 IN PRINT 10064183 FOR PLATING SPEC OF 51730-112 AND 51730-112LF RESPECTIVELY

(4) MANUFACTURER'S NAME, P/N, AND DATE CODE TO APPEAR ON THIS SURFACE.

5. PRODUCT SPECIFICATION GS-12-149.
APPLICATION SPECIFICATION BUS-20-067.

6. PACKAGED IN TRAYS.

PCB NOTES:

7. ALL HOLE DIAMETERS ARE FINISHED HOLE SIZE.

8. MOUNTING HOLES, WHERE APPLICABLE, ARE UNPLATED.

(9) $\varnothing .0453 \pm .0010$ (1.151 \pm 0.025) DRILLED HOLES PLATED WITH .0003 (0.008) MIN SnPb OVER .001 (0.03) TO .003 (0.08) Cu PLATING TO ACHIEVE $\varnothing .040 \pm .003$ (1.02 \pm .07) HOLE.

(10) *DIM XXX* TO BE DETERMINED BY THE CUSTOMER.

(11) CONNECTOR KEEP-OUT ZONE.

12: A Δ SYMBOL WILL BE NEXT TO ANY DIMENSION, VIEW, OR NOTE WHICH HAS BEEN MODIFIED WITH CURRENT DRAWING VERSION.

mat'l code		SEE NOTE 2		tolerances unless otherwise specified		CUSTOMER		FCI		www.fciconnect.com	
lfr	ecm no.	dr	date	linear	$XX \pm .01/0$	$YY \pm 0.3$	COPY	projection	title	2P + 16S + 2P	
C					$XXX \pm .005/0$	$YY \pm 0.13$			RIGHT ANGLE SOLDER HEADER		
				angles	$XXX \pm .002/0$	$YY \pm 0.051$			product	family	PwrBlade
				dr	LH	06/24/05	INCH/MM	size	dwg no	51730-112	213
				enrg	LH	06/24/05	scale	A	sheet	4 of 4	
				chr	VICTOR LIN	06/24/05	1:1				
				oppd	JOSEPH HSTA	06/24/05					
sheet index	revision sheet										

cage code 22526