

Excellent Integrated System Limited

Stocking Distributor

Click to view price, real time Inventory, Delivery & Lifecycle Information:

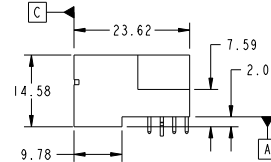
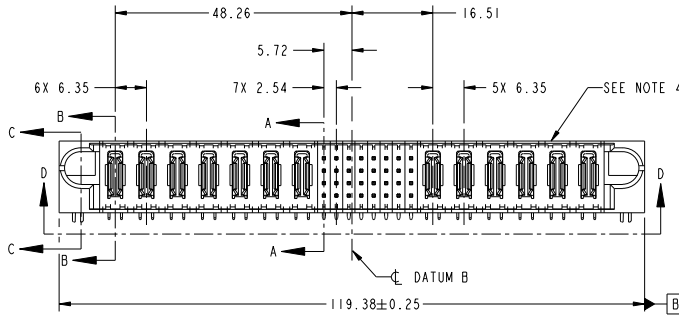
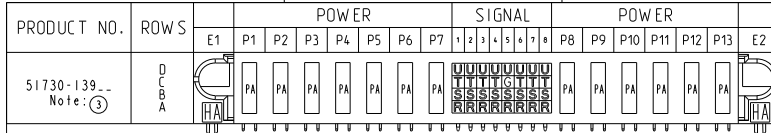
[FCI](#)
[51730-139LF](#)

For any questions, you can email us directly:
sales@integrated-circuit.com

Tous droits strictement réservés. Reproduction ou communication de des tiers interdite sous quelque forme que ce soit sans autorisation écrite du propriétaire. Propriété de FCI. Droits de reproduction FCI.



All rights strictly reserved. Reproduction or issue to third parties in any form whatever is not permitted without written authority from the proprietor. Property of FCI. Copyright FCI.



CODE	DIM "M" MATING LENGTH	CONTACT TYPE
G	[5.59]	SIGNAL
R	[6.86]	SIGNAL
S	[6.86]	SIGNAL
T	[6.86]	SIGNAL
U	[6.86]	SIGNAL
PA	[N/A]	POWER
HA	[N/A]	HOLD-DOWN

mat'l code				0		tolerances unless otherwise specified	
lfr	ecm no.	dr	date	linear	0.X ±0.3	projection	COPY
A	D607-0481	JC	12/03/07	angles	0.XX ±0.13	MM	www.fciconnect.com
				dr	0.XXX ±0.051	scale	title
				engr	0° ±2°	1:1	7P + 32S + 6P
				chr			RIGHT ANGLE SOLDER HEADER
				appd			product family
							PwrBlade
sheet index	revision sheet	A	A	A	A		size
1	2	3	4				dwg no
							51730-139
							code
							213
							sheet
							1 of 4

CUSTOMER		FCI	
www.fciconnect.com		www.fciconnect.com	
projection		title	
MM		7P + 32S + 6P	
scale		RIGHT ANGLE SOLDER HEADER	
1:1		product family	
		PwrBlade	
		size	
		dwg no	
		51730-139	
		code	
		213	
		sheet	
		1 of 4	

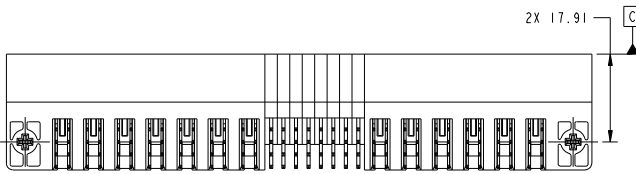
cage code 22526

Pro/E

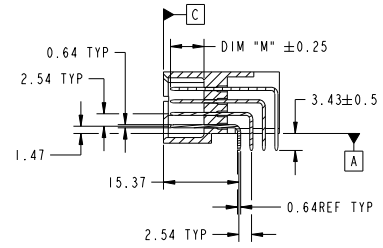
Tous droits strictement réservés. Reproduction ou communication à des tiers interdite sous quelque forme que ce soit sans autorisation écrite du propriétaire. Propriété de FCI. Droits de reproduction FCI.

All rights strictly reserved. Reproduction or issue to third parties in any form whatever is not permitted without written authority from the proprietor. Property of FCI. Copyright FCI.

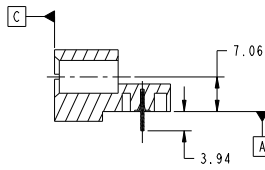
PRODUCT NUMBER
51730-139--
Notes: ③



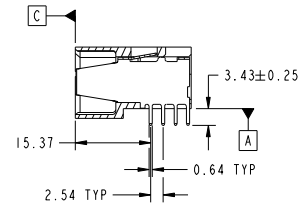
VIEW D-D



SECTION A-A



SECTION C-C



SECTION B-B

mat'l code				0	tolerances unless otherwise specified		CUSTOMER		FCI		www.fciconnect.com	
ltr	ecm no.	dr	date	linear	0.X ±0.3	projection	COPY		title			
A					0.XX ±0.13				7P + 32S + 6P			
				angles	0.XXX ±0.051				RIGHT ANGLE SOLDER HEADER			
					0° ±2°	MM			product family PwrBlade code			
				dr	Jerome Chen 11/09/07	scale	1:1		size		213	
				enr	Jerome Chen 11/09/07				dwg no		sheet	
				chr	Gary Hsieh 11/09/07				51730-139		2 of 4	
				oppd	Joseph Hsiao 11/09/07							
sheet index	revision sheet											

Pro/E

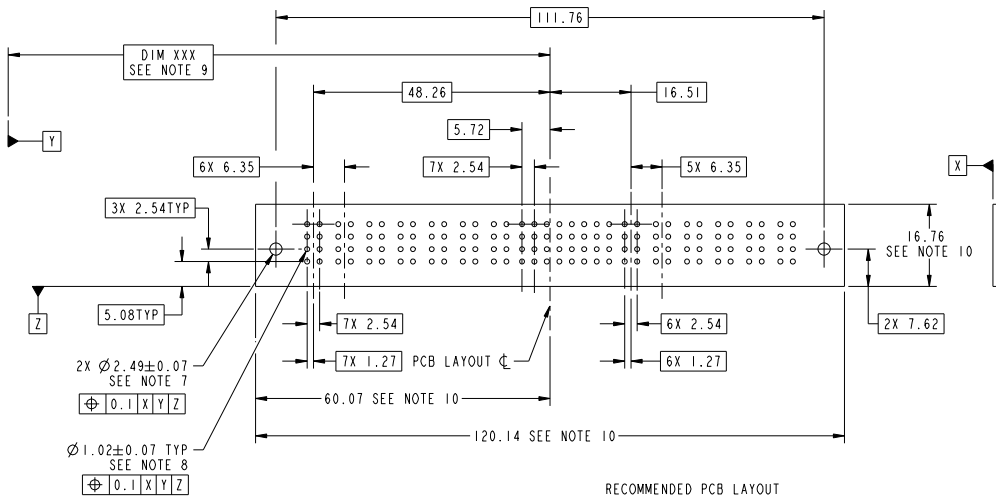
cage code 22526

Tous droits strictement réservés. Reproduction ou communication à des tiers interdite sous quelque forme que ce soit sans autorisation écrite du propriétaire. Propriété de FCI. Droits de reproduction FCI.



All rights strictly reserved. Reproduction or issue to third parties in any form whatever is not permitted without written authority from the proprietor. Property of FCI. Copyright FCI.

PRODUCT NUMBER
51730-139--
Note: ③



mat'l code				0	tolerances unless otherwise specified		CUSTOMER		FCI		www.fciconnect.com	
ltr	ecr no.	dr	date	linear	0.X	+0.3	COPY		projection		title	
A					0.XX	+0.13	MM		A		7P + 32S + 6P RIGHT ANGLE SOLDER HEADER	
				angles	0.XXX	+0.051	scale		product family		code	
				dr	0°	+2°	1:1		PwrBlade		213	
				enr	Jerome Chen	11/09/07			size		sheet	
				chr	Jerome Chen	11/09/07			dwg no		3 of 4	
				oppd	Gary Hsieh	11/09/07			51730-139			
					Joseph Hsiao	11/09/07						
sheet index	revision sheet											

Pro/E

cage code 22526

Tous droits strictement réservés. Reproduction ou communication à des tiers interdite sous quelque forme que ce soit sans autorisation écrite du propriétaire. Propriété de FCI. Droits de reproduction FCI.

All rights strictly reserved. Reproduction or issue to third parties in any form whatever is not permitted without written authority from the proprietor. Property of FCI. Copyright FCI.



PRODUCT NUMBER
51730-139--
Note: ③

NOTES:

1. DIMENSIONS AND TOLERANCES ARE IN ACCORDANCE WITH ASME Y14.5M, 1994 UNLESS OTHERWISE SPECIFIED.
- ② CONNECTORS NOTES:
HOUSING MATERIAL: UL 94 V-0 GLASS FILLED HIGH TEMP THERMO PLASTIC
POWER CONTACT MATERIAL: COPPER ALLOY
SIGNAL PIN MATERIAL: COPPER ALLOY
3. PLATING:
SEE PRINT 10064183 FOR PLATING SPEC OF 51730-139; 51730-139LF
4. "MANUFACTURER" NAME, P/N, AND DATE CODE TO APPEAR ON THIS SURFACE.
5. PRODUCT SPECIFICATION GS-12-149.
- PCB - NOTES:
6. ALL HOLE DIAMETERS ARE FINISHED HOLE SIZE.
7. HOLD DOWN THROUGH HOLES ARE UNPLATED.
8. $\varnothing 1.151 \pm 0.025$ DRILLED HOLES PLATED WITH 0.008 MIN SnPb OR Sn OVER 0.03 TO 0.08 Cu PLATING TO ACHIEVE $\varnothing 1.02 \pm .07$ HOLE.
9. "DIM XXX" TO BE DETERMINED BY THE CUSTOMER.
- ⑩ CONNECTOR KEEP-OUT ZONE.

mat'l code				0		tolerances unless otherwise specified		CUSTOMER		FCI		www.fciconnect.com	
ltr	ecm no.	dr	date	linear	0.X ± 0.3	projection	COPY		title				
A					0.XX ± 0.13				7P + 32S + 6P RIGHT ANGLE SOLDER HEADER				
				angles	0.XXX ± 0.051				product family		PwrBlade		code
				dr	0° ± 2°	MM	scale		size		dwg no		213
				engr	Jerome Chen 11/09/07	←	1:1		A		51730-139		sheet
				chr	Gary Hsieh 11/09/07								4 of 4
				oppd	Joseph Hsiao 11/09/07								
sheet index	revision sheet												

Pro/E

cage code 22526