

## Excellent Integrated System Limited

Stocking Distributor

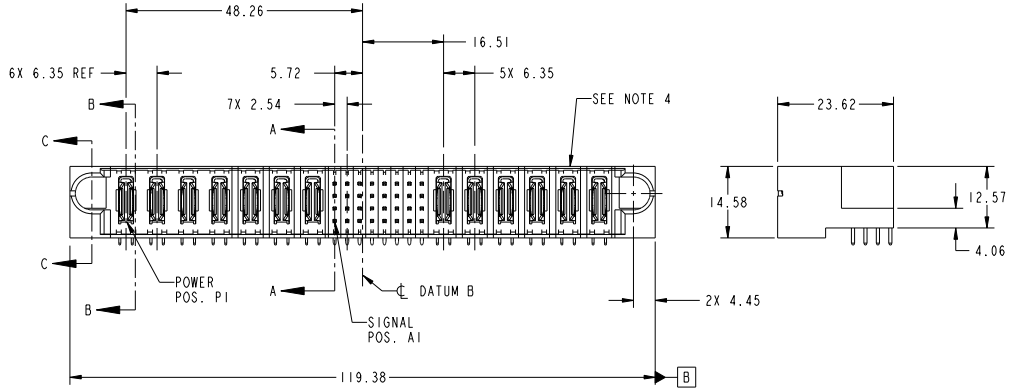
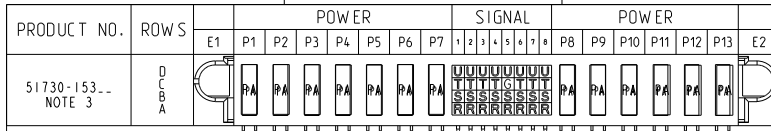
Click to view price, real time Inventory, Delivery & Lifecycle Information:

[FCI](#)  
[51730-153LF](#)

For any questions, you can email us directly:  
[sales@integrated-circuit.com](mailto:sales@integrated-circuit.com)

Tous droits strictement réservés. Reproduction ou communication de des tiers interdite sous quelque forme que ce soit sans autorisation écrite du propriétaire. Propriété de FCI. Droits de reproduction FCI.

All rights strictly reserved. Reproduction or issue to third parties in any form whatever is not permitted without written authority from the proprietor. Property of FCI. Copyright FCI.



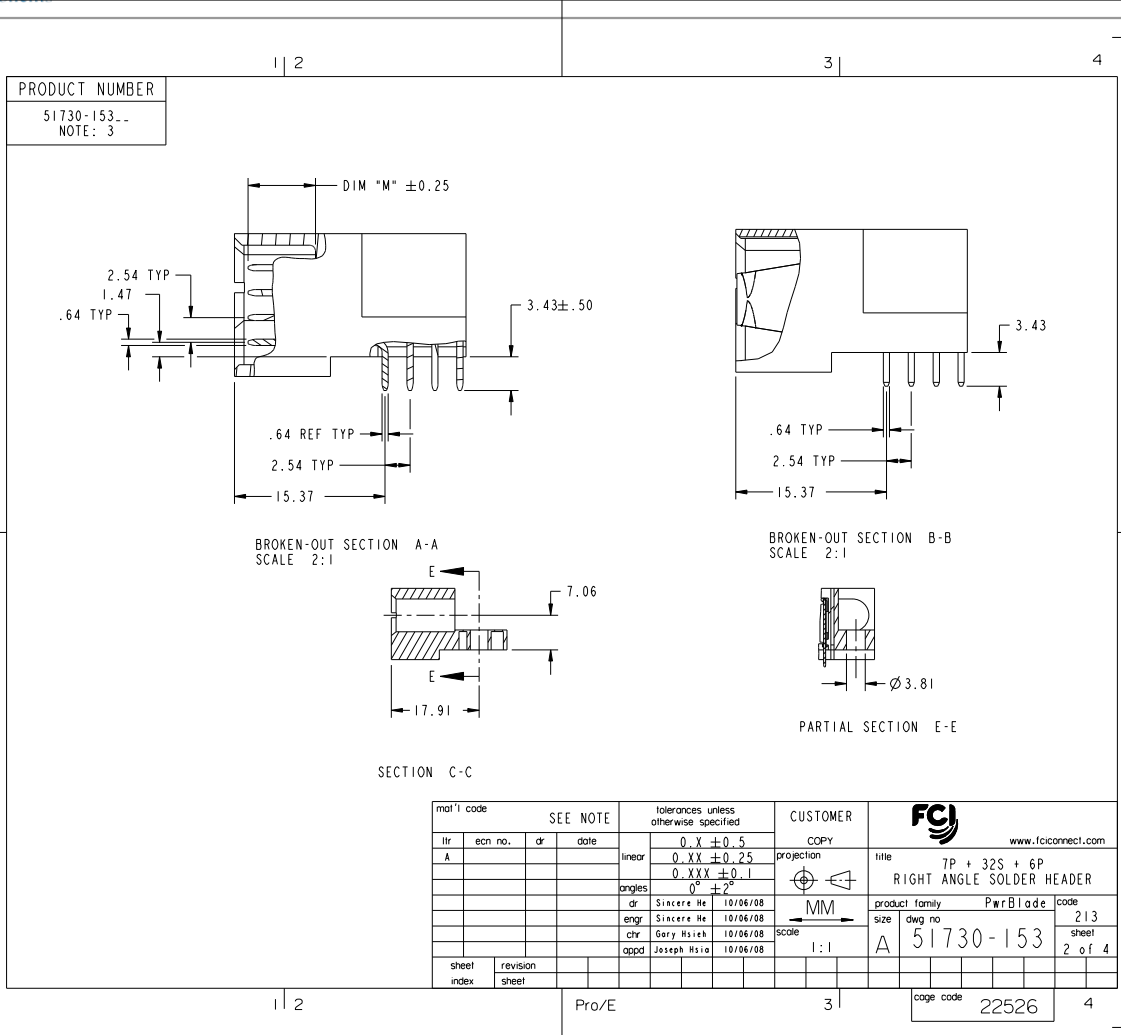
CODE	DIM "M" MATING LENGTH	CONTACT TYPE
PA	[N/A]	POWER
R	[6.86]	SIGNAL
S	[6.86]	SIGNAL
T	[6.86]	SIGNAL
U	[6.86]	SIGNAL
G	[5.59]	SIGNAL

mat'l code				SEE NOTE		tolerances unless otherwise specified	
ltr	ecn no.	dr	date	linear	0.X ±0.5	projection	
A	DG08-0287	SH	10/16/08	angles	0.XXX ±0.25	MM	
				dr	0° ±2°	scale	1:1
				enr	Sincere He 10/06/08		
				chr	Sincere He 10/06/08		
				oppd	Gary Hsieh 10/06/08		
					Joseph Hsiao 10/06/08		
sheet index	revision sheet	A	A	A	A		
		1	2	3	4		

CUSTOMER		FCI	
COPY	www.fciconnect.com	title	7P + 32S + 6P
projection		RIGHT ANGLE SOLDER HEADER	
product family	PwrBlade	code	213
size	dwg no	51730-153	sheet 1 of 4
scale			
		cage code	22526

Tous droits strictement réservés. Reproduction ou communication à des tiers interdite sous quelque forme que ce soit sans autorisation écrite du propriétaire. Propriété de FCI. Droits de reproduction FCI.

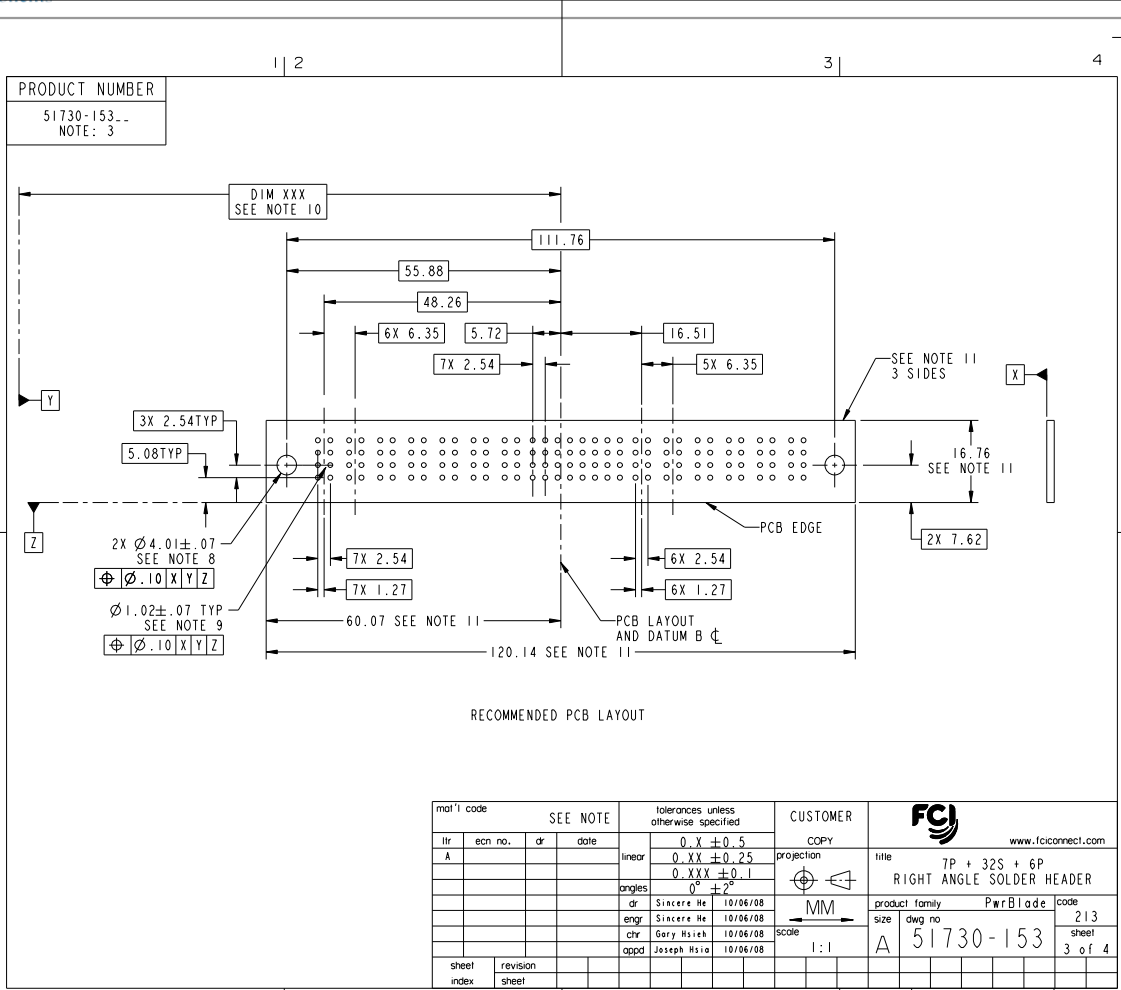
All rights strictly reserved. Reproduction or issue to third parties in any form whatever is not permitted without written authority from the proprietor. Property of FCI. Copyright FCI.



mat'l code				SEE NOTE		tolerances unless otherwise specified		CUSTOMER	
ltr	ecm no.	dr	date	linear	0.X ±0.5	projection	www.fciconnect.com		
A					0.XX ±0.25	MM	RIGHT ANGLE SOLDER HEADER		
				angles	0.XXX ±0.1	MM	product family	PwrBlade	code
				dr	0° ±2°	MM	size	dwg no	213
				enr	Sincere He 10/06/08	MM	A	51730-153	sheet
				chr	Sincere He 10/06/08	MM			2 of 4
				oppd	Gary Hsieh 10/06/08	MM			
					Joseph Hsia 10/06/08	MM			
sheet index	revision sheet					scale	1:1		

Tous droits strictement réservés. Reproduction ou communication à des tiers interdite sous quelque forme que ce soit sans autorisation écrite du propriétaire. Propriété de FCI. Droits de reproduction FCI.

All rights strictly reserved. Reproduction or issue to third parties in any form whatever is not permitted without written authority from the proprietor. Property of FCI. Copyright FCI.



RECOMMENDED PCB LAYOUT

mat'l code		SEE NOTE		tolerances unless otherwise specified		CUSTOMER	
ltr	ecm no.	dr	date	linear	0 . X ± 0.5	COPY	www.fciconnect.com
A				angles	0 . XX ± 0.25	projection	title
					0 . XXX ± 0.1		7P + 32S + 6P
				dr	0° ± 2°	MM	RIGHT ANGLE SOLDER HEADER
				engr	Sincere He 10/06/08	scale	product family
				chr	Gary Hsieh 10/06/08	1:1	PwrBlade
				appd	Joseph Hsia 10/06/08		size
sheet index	revision sheet						dwg no
							A
							51730-153
							code
							213
							sheet
							3 of 4
							code
							22526

Tous droits strictement réservés. Reproduction ou communication à des tiers interdite sous quelque forme que ce soit sans autorisation écrite du propriétaire. Propriété de E.F.C.I. - Droits de reproduction F.C.I.

All rights strictly reserved. Reproduction or issue to third parties in any form whatever is not permitted without written authority from the proprietor. Property of F.C.I. - Copyright F.C.I.

**PRODUCT NUMBER**  
 51730-153-  
 NOTE: 3

**NOTES:**

1. DIMENSIONS AND TOLERANCES ARE IN ACCORDANCE WITH ASME Y14.5M, 1994 UNLESS OTHERWISE SPECIFIED.

**CONNECTOR NOTES:**

- 2. HOUSING MATERIAL: UL 94 V-0 GLASS FILLED  
 HIGH-TEMP THERMOPLASTIC  
 POWER CONTACT MATERIAL: COPPER ALLOY  
 SIGNAL PIN MATERIAL: COPPER ALLOY
  - 3. SEE ITEM 1 & 2 IN PRINT 10064183 FOR PLATING SPEC OF 51730-153 AND 51730-153LF RESPECTIVELY
  - 4. MANUFACTURER'S NAME, P/N, AND DATE CODE TO APPEAR ON THIS SURFACE.
  - 5. PRODUCT SPECIFICATION GS-12-149.  
 APPLICATION SPECIFICATION BUS-20-067.
  - 6. PACKAGED IN TRAYS.
- PCB NOTES:**
- 7. ALL HOLE DIAMETERS ARE FINISHED HOLE SIZE.
  - 8. MOUNTING HOLES, WHERE APPLICABLE, ARE UNPLATED.
  - 9.  $\varnothing 1.151 \pm 0.025$  DRILLED HOLES PLATED WITH 0.008 MIN SnPb OR Sn OVER 0.03 TO 0.08 Cu PLATING TO ACHIEVE  $\varnothing 1.02 \pm .07$  HOLE.
  - 10. "DIM XXX" TO BE DETERMINED BY THE CUSTOMER.
  - 11. CONNECTOR KEEP-OUT ZONE.

SEE NOTE				tolerances unless otherwise specified		CUSTOMER	
ltr	ecn no.	dr	date	linear	0.X ± 0.5	COPY	
A					0.XX ± 0.25	projection	title
				angles	0.XXX ± 0.1		7P + 32S + 6P RIGHT ANGLE SOLDER HEADER
				dr	0° ± 2°	MM	product family
				engr	Sincere He 10/06/08	scale	PwrBlade
				chr	Gary Hsieh 10/06/08	1:1	code
				appd	Joseph Hsia 10/06/08		213
sheet index	revision sheet						4 of 4

cage code 22526