

Excellent Integrated System Limited

Stocking Distributor

Click to view price, real time Inventory, Delivery & Lifecycle Information:

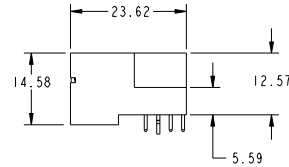
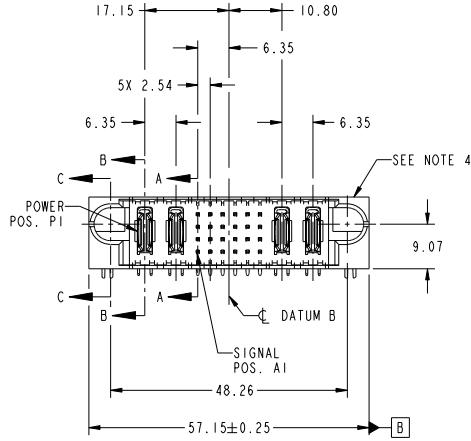
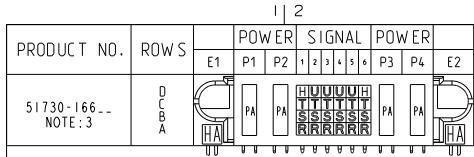
[FCI](#)
[51730-166LF](#)

For any questions, you can email us directly:
sales@integrated-circuit.com

Tous droits strictement réservés. Reproduction ou communication à des tiers interdite sous quelque forme que ce soit sans autorisation écrite du propriétaire. Propriété de E.F.C.I. Droits de reproduction F.C.I.



All rights strictly reserved. Reproduction or issue to third parties in any form whatever is not permitted without written authority from the proprietor. Property of F.C.I. Copyright F.C.I.



CODE	DIM "M" MATING LENGTH	CONTACT TYPE
H	[5.59]	SIGNAL
R	[6.86]	SIGNAL
S	[6.86]	SIGNAL
T	[6.86]	SIGNAL
U	[6.86]	SIGNAL
PA	[N/A]	POWER
HA	[N/A]	HOLD-DOWN

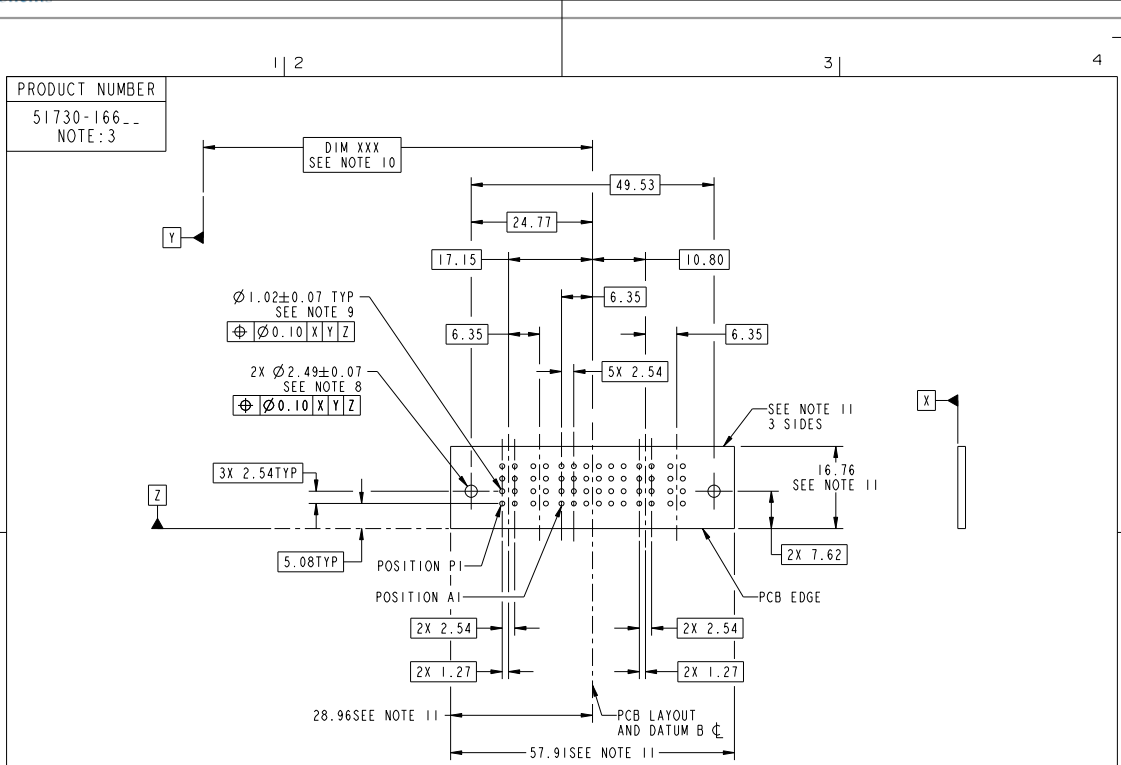
mat'l code				SEE NOTE		tolerances unless otherwise specified	
ltr	ecm no.	dr	date			0.X ±0.5	
A	DG10-0037	WD	01/27/10	linear		0.XX ±0.25	
				angles		0.XXX ±0.10	
				dr	Warren Du	11/26/09	
				enr	Warren Du	11/26/09	
				chr	PM ZHENG	11/26/09	
				oppd	Joseph Hsiao	11/26/09	
sheet index	revision sheet	A	A	A	A		
		1	2	3	4		

CUSTOMER		FCI		www.fciconnect.com	
COPY		projection		title	
MM		MM		2P + 24S + 2P	
scale: 1:1		product family		RIGHT ANGLE SOLDER HEADER	
		size		PwrBlade	
		dwg no		code	
		A 51730-166		213	
				sheet	
				1 of 4	
		cage code		4	
		22526			

Tous droits strictement réservés. Reproduction ou communication à des tiers interdite sous quelque forme que ce soit sans autorisation écrite du propriétaire. Propriété de FCI. Droits de reproduction FCI.



All rights strictly reserved. Reproduction or issue to third parties in any form whatever is not permitted without written authority from the proprietor. Property of FCI. Copyright FCI.



RECOMMENDED PCB LAYOUT

mat'l code		SEE NOTE		tolerances unless otherwise specified		CUSTOMER	
ltr	ecm no.	dr	date	linear	0.X ± 0.5	COPY	www.fciconnect.com
A				angular	0.XX ± 0.25	projection	
				angles	0.XXX ± 0.10		title
				dr	0° ± 2°	MM	2P + 24S + 2P
				enr	Warren Du 11/26/09	MM	RIGHT ANGLE SOLDER HEADER
				chr	Warren Du 11/26/09	scale	product family
				oppd	PM ZHENG 11/26/09	1:1	PwrBlade
					Joseph Hsiao 11/26/09		size
sheet index	revision sheet						dwg no
							51730-166
							code
							213
							sheet
							3
							4

Tous droits strictement réservés. Reproduction ou communication à des tiers interdite sous quelque forme que ce soit sans autorisation écrite du propriétaire. Propriété de FCI. Droits de reproduction FCI.



All rights strictly reserved. Reproduction or issue to third parties in any form whatever is not permitted without written authority from the proprietor. Property of FCI. Copyright FCI.

PRODUCT NUMBER
51730-166--
NOTE: 3

NOTES:

1. DIMENSIONS AND TOLERANCES ARE IN ACCORDANCE WITH ASME Y14.5M, 1994 UNLESS OTHERWISE SPECIFIED.

CONNECTOR NOTES:

- 2. HOUSING MATERIAL: UL 94 V-0 GLASS FILLED HIGH-TEMP THERMOPLASTIC
 POWER CONTACT MATERIAL: COPPER ALLOY
 SIGNAL PIN MATERIAL: COPPER ALLOY
 - 3. SEE ITEM 1 & 2 IN PRINT 10064183 FOR PLATING SPEC OF 51730-166 AND 51730-166LF RESPECTIVELY.
 - 4. MANUFACTURER'S NAME, DATE CODE AND OPTIONAL P/N TO APPEAR ON THIS SURFACE. THE P/N CAN BE OMITTED IF THERE IS NOT ENOUGH SPACE ON THIS SURFACE.
 - 5. PRODUCT SPECIFICATION GS-12-149.
 APPLICATION SPECIFICATION BUS-20-067.
 - 6. PACKAGED IN TRAYS.
- PCB NOTES:
- 7. ALL HOLE DIAMETERS ARE FINISHED HOLE SIZE.
 - 8. MOUNTING HOLES, WHERE APPLICABLE, ARE UNPLATED.
 - 9. $\varnothing 1.151 \pm 0.025$ DRILLED HOLES PLATED WITH 0.008 MIN SnPb OVER 0.03 TO 0.08 Cu PLATING TO ACHIEVE $\varnothing 1.02 \pm 0.07$ HOLE.
 - 10. "DIM XXX" TO BE DETERMINED BY THE CUSTOMER.
 - 11. CONNECTOR KEEP-OUT ZONE.

mat'l code		SEE NOTE		tolerances unless otherwise specified		CUSTOMER	
ltr	ecm no.	dr	date	linear	0.X ± 0.5	COPY	www.fciconnect.com title 2P + 24S + 2P RIGHT ANGLE SOLDER HEADER
A					0.XX ± 0.25	projection	
				angles	0° ± 2°		product family PwrBlade code 213 size dwg no 51730-166 sheet 4
		dr	Warren Du	11/26/09		MM	scale 1:1
		enr	Warren Du	11/26/09			
		chr	PM ZHENG	11/26/09			
		oppd	Joseph Hsiao	11/26/09			
sheet index	revision sheet						

Pro/E

cage code 22526