

Excellent Integrated System Limited

Stocking Distributor

Click to view price, real time Inventory, Delivery & Lifecycle Information:

[FCI](#)

[51730-174LF](#)

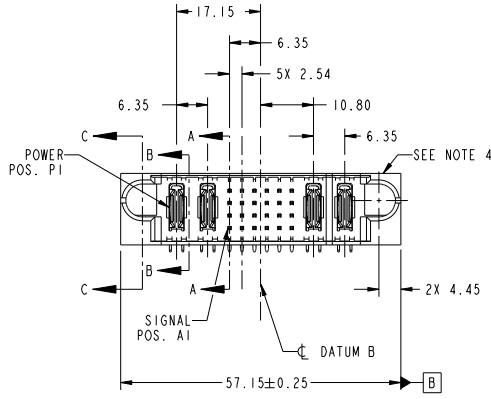
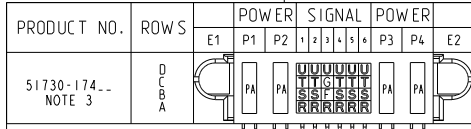
For any questions, you can email us directly:

sales@integrated-circuit.com

Tous droits strictement réservés. Reproduction ou communication à des tiers interdite sous quelque forme que ce soit sans autorisation écrite du propriétaire. Propriété de FCI. Droits de reproduction FCI.



All rights strictly reserved. Reproduction or issue to third parties in any form whatever is not permitted without written authority from the proprietor. Property of FCI. Copyright FCI.



CODE	DIM "M" MATING LENGTH	CONTACT TYPE
U	[6.86]	SIGNAL
T	[6.86]	SIGNAL
S	[6.86]	SIGNAL
R	[6.86]	SIGNAL
PA	[N/A]	POWER
G	[5.59]	SIGNAL
F	[5.59]	SIGNAL

mat'l code				SEE NOTE		tolerances unless otherwise specified	
ltr	ecm no.	dr	date			0.X ±0.5	
A	DG10-0163	AL	05/04/10	linear		0.XX ±0.25	
				angles		0.XXX ±0.1	
				dr	Arson Liu	0° ±2°	05/04/10
				enr	Jerome Chen		05/04/10
				chr	PM ZHENG		05/04/10
				oppd	JOSEPH HSIA		05/04/10
sheet index	revision sheet	A	A	A	A		
		1	2	3	4		

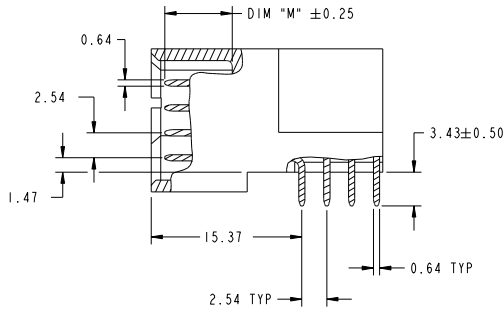
CUSTOMER		FCI	
COPY		www.fciconnect.com	
projection	MM	title	
	MM	2P + 24S + 2P	
scale	1:1	RIGHT ANGLE SOLDER HEADER	
		product family	PwrBlade
		size	code
		dwg no	213
		51730-174	sheet
			1 of 4
		cage code	22526

Tous droits strictement réservés. Reproduction ou communication à des tiers interdite sous quelque forme que ce soit sans autorisation écrite du propriétaire. Propriété de FCI. Droits de reproduction FCI.

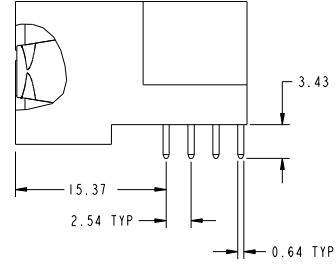
All rights strictly reserved. Reproduction or issue to third parties in any form whatever is not permitted without written authority from the proprietor. Property of FCI. Copyright FCI.



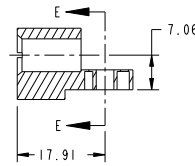
PRODUCT NUMBER
51730-174...
NOTE: 3



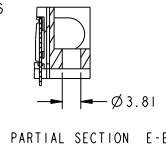
BROKEN-OUT SECTION A-A
SCALE 2:1



BROKEN-OUT SECTION B-B
SCALE 2:1



SECTION C-C



PARTIAL SECTION E-E

mat'l code		SEE NOTE		tolerances unless otherwise specified		CUSTOMER	
ltr	ecm no.	dr	date	linear	0.X ±0.5	COPY	www.fciconnect.com
A					0.XX ±0.25	projection	
					0.XXX ±0.1		title
				angles	0° ±2°	MM	2P + 24S + 2P
		dr	Arson Liu	05/04/10		product family	PwrBlade
		enrg	Jerome Chen	05/04/10		size	
		chr	PM ZHENG	05/04/10		dwg no	51730-174
		oppd	JOSEPH HSIA	05/04/10		code	213
sheet index	revision sheet					scale	2 of 4
						cage code	22526

Pro/E

PDM: Rev:A

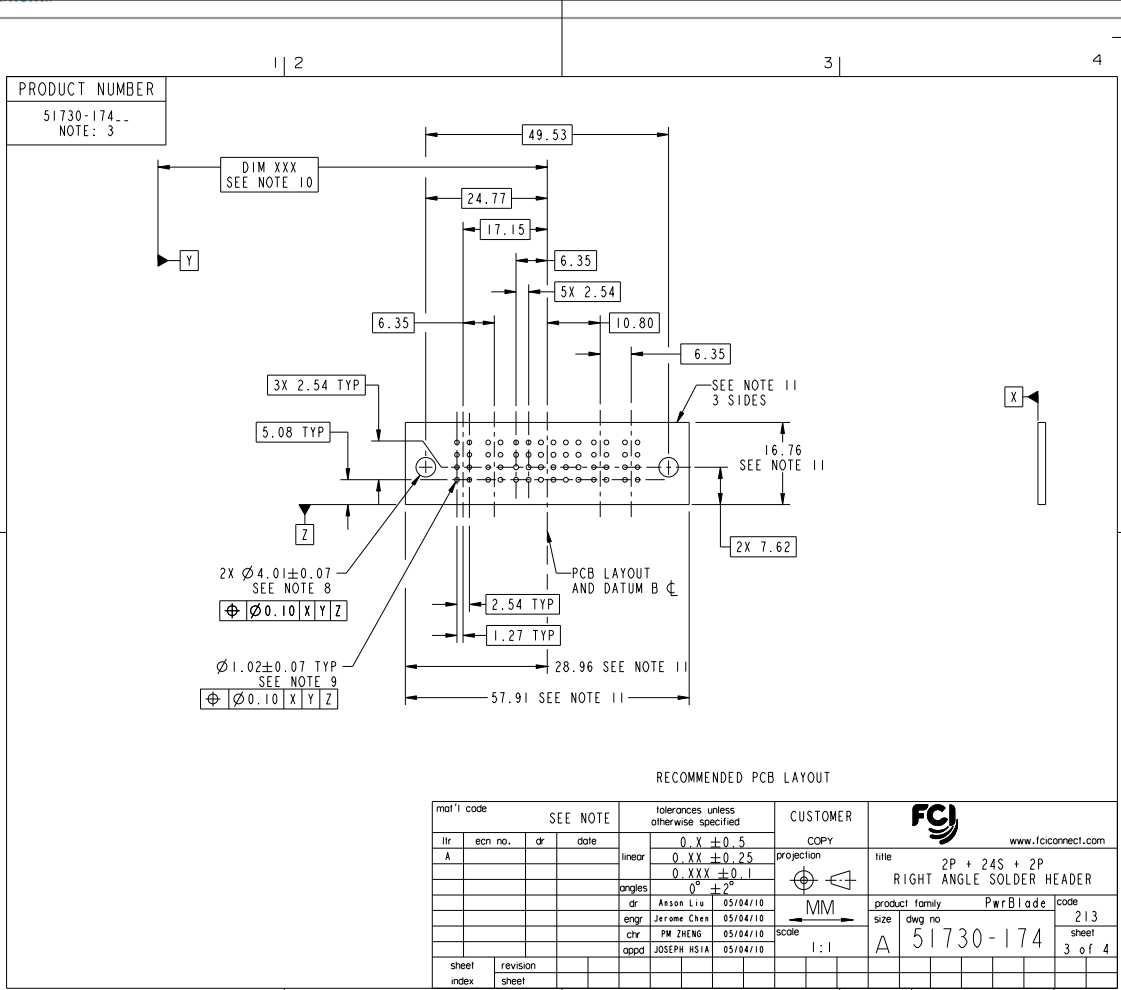
STATUS: Released

Printed: Dec 20, 2010

Tous droits strictement réservés. Reproduction ou communication à des tiers interdite sous quelque forme que ce soit sans autorisation écrite du propriétaire. Propriété de FCI. Droits de reproduction FCI.



All rights strictly reserved. Reproduction or issue to third parties in any form whatever is not permitted without written authority from the proprietor. Property of FCI. Copyright FCI.



RECOMMENDED PCB LAYOUT

mat'l code		SEE NOTE	tolerances unless otherwise specified	CUSTOMER	FCI	
lfr	ecn no.	dr	date	linear	0.X ±0.5	www.fciconnect.com
A				projection	0.XX ±0.25	
				angles	0.XXX ±0.1	
				dr	0° ±2°	
				enr	Asan Liu 05/04/10	
				chr	Jerome Chen 05/04/10	
				opd	PM ZHENG 05/04/10	
					JOSEPH HSIA 05/04/10	
sheet index	revision sheet			scale	1:1	
				product family	PwrBlade	code
				size	A	213
				dwg no	51730-174	sheet
						3 of 4
				cage code	22526	

Tous droits strictement réservés. Reproduction ou communication à des tiers interdite sous quelque forme que ce soit sans autorisation écrite du propriétaire. Propriété de FCI. Droits de reproduction FCI.

All rights strictly reserved. Reproduction or issue to third parties in any form whatever is not permitted without written authority from the proprietor. Property of FCI. Copyright FCI.

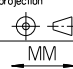
PRODUCT NUMBER
51730-174..
NOTE: 3

NOTES:

1. DIMENSIONS AND TOLERANCES ARE IN ACCORDANCE WITH ASME Y14.5M, 1994 UNLESS OTHERWISE SPECIFIED.

CONNECTOR NOTES:

- 2. HOUSING MATERIAL: UL 94 V-0 GLASS FILLED HIGH-TEMP THERMOPLASTIC
POWER CONTACT MATERIAL: COPPER ALLOY
SIGNAL P IN MATERIAL: COPPER ALLOY
 - 3. SEE ITEM 1 & 2 IN PRINT 10064183 FOR PLATING SPEC OF 51730-174 AND 51730-174LF RESPECTIVELY.
 - 4. MANUFACTURER'S NAME, DATE CODE AND OPTIONAL P/N TO APPEAR ON THIS SURFACE. THE P/N CAN BE OMITTED IF THERE IS NOT ENOUGH SPACE ON THIS SURFACE.
 - 5. PRODUCT SPECIFICATION GS-12-149.
APPLICATION SPECIFICATION BUS-20-067.
 - 6. PACKAGED IN TRAYS.
- PCB NOTES:
- 7. ALL HOLE DIAMETERS ARE FINISHED HOLE SIZE.
 - 8. MOUNTING HOLES, WHERE APPLICABLE, ARE UNPLATED.
 - 9. $\varnothing 1.151 \pm 0.025$ DRILLED HOLES PLATED WITH
0.008 MIN SnPb OR Sn OVER 0.03
TO 0.08 Cu PLATING TO ACHIEVE
 $\varnothing 1.02 \pm 0.07$ HOLE.
 - 10. "DIM XXX" TO BE DETERMINED BY THE CUSTOMER.
 - 11. CONNECTOR KEEP-OUT ZONE.

SEE NOTE				tolerances unless otherwise specified		CUSTOMER	
ltr	ecm no.	dr	date	linear	0.X ± 0.5	COPY	www.fciconnect.com
A					0.XX ± 0.25	projection	
				angles	0.XXX ± 0.1	 M M scale: 1:1	title
				dr	0° ± 2°		product family
				engr	Asson Liu 05/04/10	size	PwrBlade
				chr	Jerome Chen 05/04/10	dwg no	code
				oppd	PW ZHENG 05/04/10	A	213
					JOSEPH HSIA 05/04/10	51730-174	sheet
sheet index	revision sheet						4 of 4

cage code 22526