

Excellent Integrated System Limited

Stocking Distributor

Click to view price, real time Inventory, Delivery & Lifecycle Information:

[FCI](#)

[51730-184LF](#)

For any questions, you can email us directly:

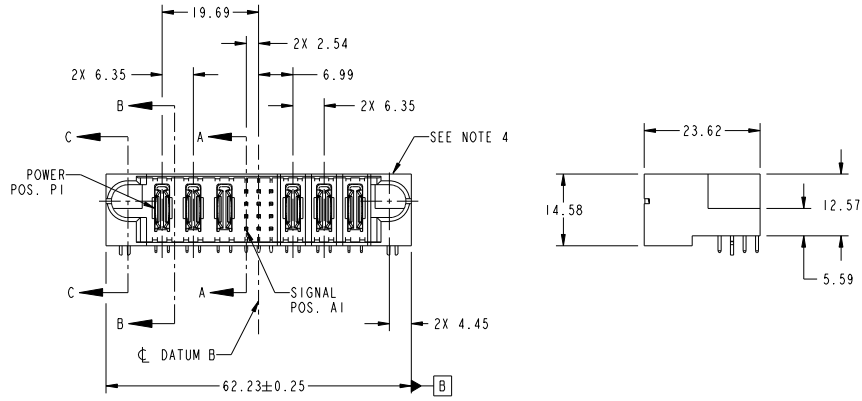
sales@integrated-circuit.com

Tous droits strictement réservés. Reproduction ou communication à des tiers interdite sous quelque forme que ce soit sans autorisation écrite du propriétaire. Propriété de FCI. Droits de reproduction FCI.



All rights strictly reserved. Reproduction or issue to third parties in any form whatever is not permitted without written authority from the proprietor. Property of FCI. Copyright FCI.

PRODUCT NO.	ROWS	POWER			SIGNAL			POWER				
		E1	P1	P2	P3	1	2	3	P4	P5	P6	E2
51730-184... NOTE 3	D C B A											



CODE	DIM "M" MATING LENGTH	CONTACT TYPE
U	[6.86]	SIGNAL
T	[6.86]	SIGNAL
S	[6.86]	SIGNAL
R	[6.86]	SIGNAL
PA	[N/A]	POWER
HA	[N/A]	HOLD-DOWN
H	[5.59]	SIGNAL

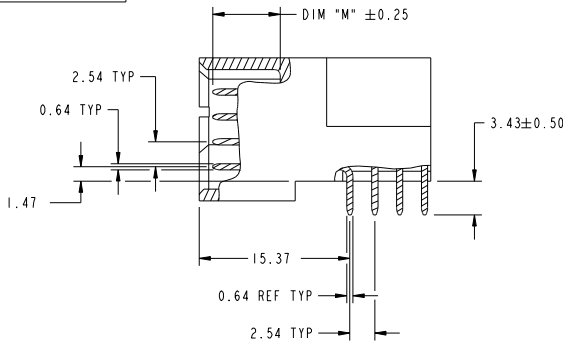
mat'l code				SEE NOTE		tolerances unless otherwise specified	
lfr	ecm no.	dr	date	linear	0.X ±0.5		
A	DG10-0384	PB	11/10/10		0.XX ±0.25		
				angles	0° ±2°		
				dr	PB Fu	10/12/10	
				enrg	PB Fu	11/09/10	
				chr	PM ZHENG	10/12/10	
				oppd	JOSEPH HSTA	10/12/10	
sheet index	revision sheet	A	A	A	A		
		1	2	3	4		

CUSTOMER		FCI	
www.fciconnect.com		www.fciconnect.com	
COPY	projection	title	3P + 12S + 3P RIGHT ANGLE SOLDER HEADER
MM	scale: 1:1	product family	PwrBlade
size	dwg no	code	213
A	51730-184	sheet	1 of 4
		code	22526

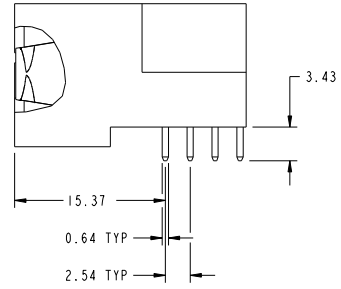
Tous droits strictement réservés. Reproduction ou communication à des tiers interdite sous quelque forme que ce soit sans autorisation écrite du propriétaire. Propriété de FCI. Droits de reproduction FCI.

All rights strictly reserved. Reproduction or issue to third parties in any form whatever is not permitted without written authority from the proprietor. Property of FCI. Copyright FCI.

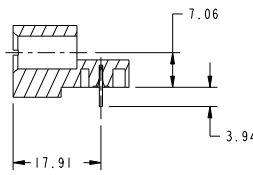
PRODUCT NUMBER
51730-184...
NOTE: 3



BROKEN-OUT SECTION A-A
SCALE 2:1



BROKEN-OUT SECTION B-B
SCALE 2:1

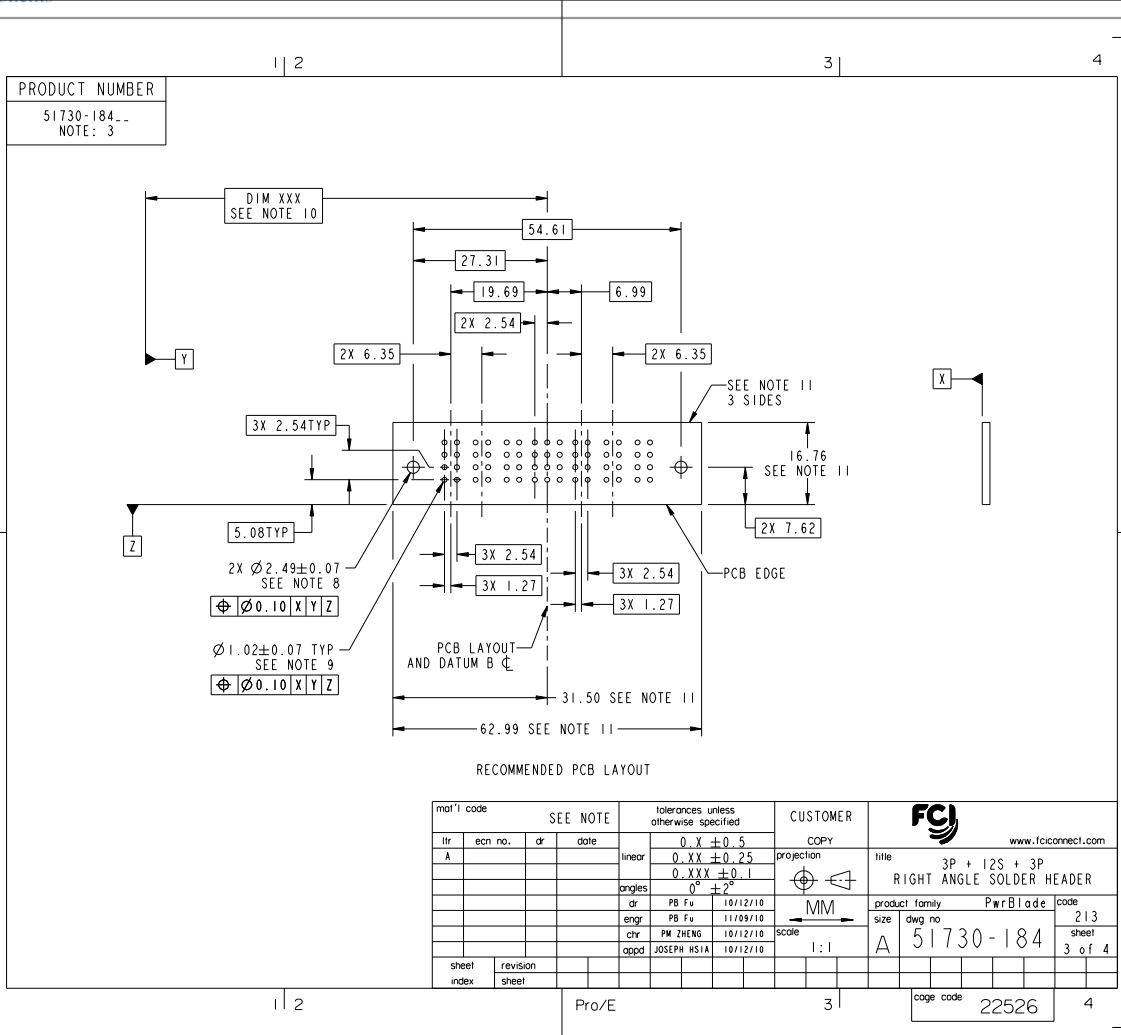


SECTION C-C

mat'l code		SEE NOTE		tolerances unless otherwise specified		CUSTOMER	
ltr	ecm no.	dr	date	linear	0.X ± 0.5	projection	COPY
A					0.XX ± 0.25		www.fciconnect.com
				angles	0.XXX ± 0.1		
				dr	0° ± 2°		
				enr	PB Fu	10/12/10	
				chr	PB Fu	11/09/10	
				opd	PW ZHENG	10/12/10	
					JOSEPH HSIA	10/12/10	
sheet index	revision sheet					scale	1:1
						product family	PwrBlade
						size	A
						dwg no	51730-184
						code	213
						sheet	2 of 4
						cage code	22526

Tous droits strictement réservés. Reproduction ou communication à des tiers interdite sous quelque forme que ce soit sans autorisation écrite du propriétaire. Propriété de FCI. Droits de reproduction FCI.

All rights strictly reserved. Reproduction or issue to third parties in any form whatever is not permitted without written authority from the proprietor. Property of FCI. Copyright FCI.



mat'l code		SEE NOTE	tolerances unless otherwise specified	CUSTOMER	FCI	
ltr	ecm no.	dr	date	linear	0.X ± 0.5	www.fciconnect.com
A				linear	0.XX ± 0.25	
				linear	0.XXX ± 0.1	
				angles	0° ± 2°	
				dr	PB Fu 10/12/10	
				enrg	PB Fu 11/09/10	
				chr	PM ZHENG 10/12/10	
				oppd	JOSEPH HSIA 10/12/10	
sheet index	revision sheet					

Tous droits strictement réservés. Reproduction ou communication à des tiers interdite sous quelque forme que ce soit sans autorisation écrite du propriétaire. Propriété de FCI. Droits de reproduction FCI.

All rights strictly reserved. Reproduction or issue to third parties in any form whatever is not permitted without written authority from the proprietor. Property of FCI. Copyright FCI.

PRODUCT NUMBER
51730-184_
NOTE: 3

NOTES:

1. DIMENSIONS AND TOLERANCES ARE IN ACCORDANCE WITH ASME Y14.5M, 1994 UNLESS OTHERWISE SPECIFIED.

CONNECTOR NOTES:

- 2. HOUSING MATERIAL: UL 94 V-0 GLASS FILLED HIGH-TEMP THERMOPLASTIC
POWER CONTACT MATERIAL: COPPER ALLOY
SIGNAL PIN MATERIAL: COPPER ALLOY
 - 3. SEE ITEM 1 & 2 IN PRINT 10064183 FOR PLATING SPEC OF 51730-184 AND 51730-184LF RESPECTIVELY.
 - 4. MANUFACTURER'S NAME, DATE CODE AND OPTIONAL P/N TO APPEAR ON THIS SURFACE. THE P/N CAN BE OMITTED IF THERE IS NOT ENOUGH SPACE ON THIS SURFACE.
 - 5. PRODUCT SPECIFICATION GS-12-149.
APPLICATION SPECIFICATION BUS-20-067.
 - 6. PACKAGED IN TRAYS.
- PCB NOTES:
- 7. ALL HOLE DIAMETERS ARE FINISHED HOLE SIZE.
 - 8. MOUNTING HOLES, WHERE APPLICABLE, ARE UNPLATED.
 - 9. $\varnothing 1.151 \pm 0.025$ DRILLED HOLES PLATED WITH
0.008 MIN SnPb OR Sn OVER 0.03
TO 0.08 Cu PLATING TO ACHIEVE
 $\varnothing 1.02 \pm 0.07$ HOLE.
 - 10. "DIM XXX" TO BE DETERMINED BY THE CUSTOMER.
 - 11. CONNECTOR KEEP-OUT ZONE.

mat'l code		SEE NOTE		tolerances unless otherwise specified		CUSTOMER	
ltr	ecm no.	dr	date	linear	0.X ± 0.5	COPY	www.fciconnect.com
A					0.XX ± 0.25	projection	
				angles	0.XXX ± 0.1		title
				dr	0° ± 2°	MM	3P + 12S + 3P
				enr	PB Fu 10/12/10	scale	RIGHT ANGLE SOLDER HEADER
				chr	PB Fu 11/09/10	product family	PwrBlade
				oppd	PW ZHENG 10/12/10	size	code
					JOSEPH HSIA 10/12/10	dwg no	213
sheet index	revision sheet					A	4 of 4
						51730-184	sheet
							4 of 4

cage code 22526