

Excellent Integrated System Limited

Stocking Distributor

Click to view price, real time Inventory, Delivery & Lifecycle Information:

[FCI](#)

[51730-188LF](#)

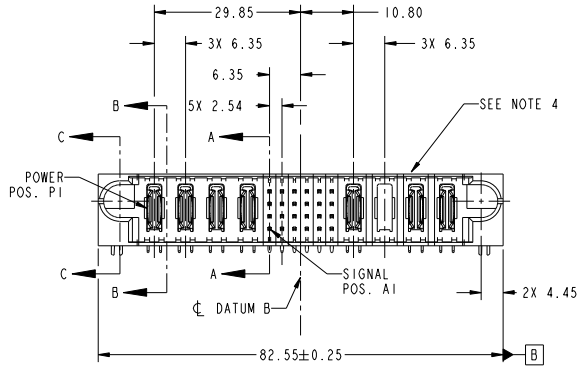
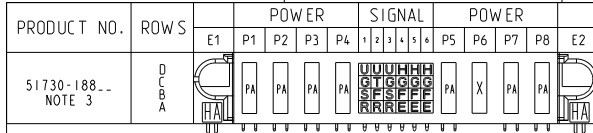
For any questions, you can email us directly:

sales@integrated-circuit.com

Tous droits strictement réservés. Reproduction ou communication à des tiers interdite sous quelque forme que ce soit sans autorisation écrite du propriétaire. Propriété de E.F.C.I. Droits de reproduction F.C.I.



All rights strictly reserved. Reproduction or issue to third parties in any form whatever is not permitted without written authority from the proprietor. Property of F.C.I. Copyright F.C.I.



CODE	DIM "M" MATING LENGTH	CONTACT TYPE
G	[5.59]	SIGNAL
F	[5.59]	SIGNAL
H	[5.59]	SIGNAL
E	[5.59]	SIGNAL
PA	[N/A]	POWER
HA	[N/A]	HOLD-DOWN
U	[6.86]	SIGNAL
T	[6.86]	SIGNAL
S	[6.86]	SIGNAL
R	[6.86]	SIGNAL
X	OMITTED	OMITTED

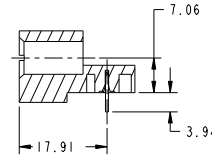
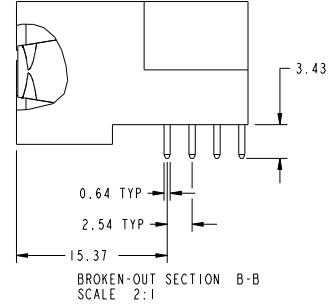
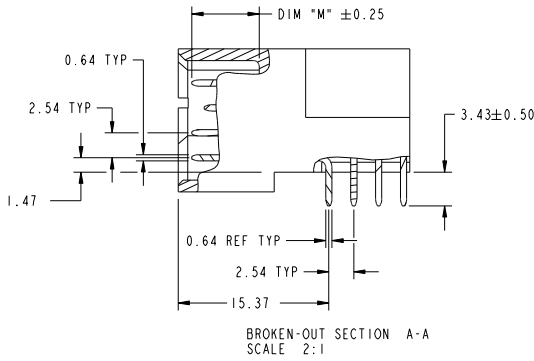
mat'l code				SEE NOTE	tolerances unless otherwise specified	CUSTOMER	FCI
ltr	ecn no.	dr	date		0.X ±0.5	COPY	www.fciconnect.com
A	DG11-0005	XQ	01/06/11	linear	0.XX ±0.25	projection	
				angles	0.XXX ±0.1	MM	title
				dr	0° ±2°	MM	4P + 24S + 4P
				enr	XQ Wang 01/06/11	MM	RIGHT ANGLE SOLDER HEADER
				chr	Anson Liu 01/06/11	MM	product family
				oppd	PM Zheeng 01/06/11	MM	PwrBlade
					Joseph Hsiao 01/06/11	MM	code
sheet index	revision sheet	A	A	A	A	scale	size
		1	2	3	4	1:1	dwg no
							A
							51730-188
							213
							sheet
							1 of 4
							code
							22526

Tous droits strictement réservés. Reproduction ou communication à des tiers interdite sous quelque forme que ce soit sans autorisation écrite du propriétaire. Propriété de FCI. Droits de reproduction FCI.



All rights strictly reserved. Reproduction or issue to third parties in any form whatever is not permitted without written authority from the proprietor. Property of FCI. Copyright FCI.

PRODUCT NUMBER
51730-188...
NOTE: 3



mat'l code		SEE NOTE		tolerances unless otherwise specified		CUSTOMER	
ltr	ecm no.	dr	date	linear	0.X ±0.5	COPY	www.fciconnect.com
A					0.XX ±0.25	projection	
				angles	0.XXX ±0.1		title
				dr	0° ±2°	MM	4P + 24S + 4P
				engr	XQ Wang 01/06/11	scale	RIGHT ANGLE SOLDER HEADER
				chr	Anson Liu 01/06/11	1:1	product family
				oppd	PM Zheeng 01/06/11		PwrBlade
sheet index	revision sheet						code
							213
							sheet
							2 of 4

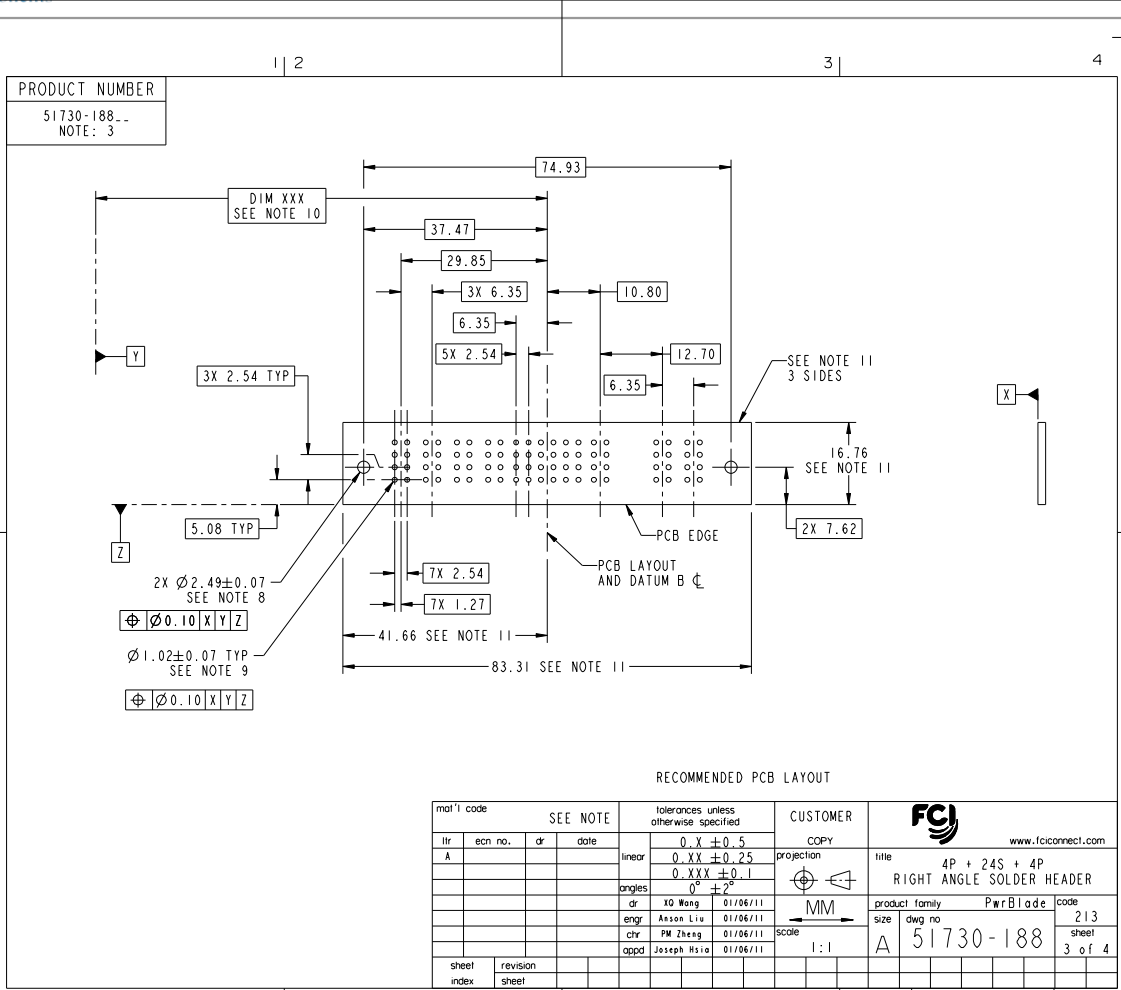
Pro/E

cage code 22526

Tous droits strictement réservés. Reproduction ou communication à des tiers interdite sous quelque forme que ce soit sans autorisation écrite du propriétaire. Propriété de E.F.C.I. Droits de reproduction F.C.I.



All rights strictly reserved. Reproduction or issue to third parties in any form whatever is not permitted without written authority from the proprietor. Property of F.C.I. Copyright F.C.I.



RECOMMENDED PCB LAYOUT

mat'l code		SEE NOTE		tolerances unless otherwise specified		CUSTOMER	
lfr	ecm no.	dr	date	linear	0.X ±0.5	COPY	www.fciconnect.com
A				projection	0.XX ±0.25	MM	4P + 24S + 4P
				angles	0.XXX ±0.1	MM	RIGHT ANGLE SOLDER HEADER
				dr	0° ±2°	MM	product family PwrBlade code 213
				engr	XQ Wang 01/06/11	MM	size dwg no 51730-188 sheet 3 of 4
				chr	Anson Liu 01/06/11	MM	scale 1:1
				oppd	PM Zheeng 01/06/11	MM	cage code 22526
sheet index	revision	sheet					

Tous droits strictement réservés. Reproduction ou communication à des tiers interdite sous quelque forme que ce soit sans autorisation écrite du propriétaire. Propriété de FCI. Droits de reproduction FCI.

All rights strictly reserved. Reproduction or issue to third parties in any form whatever is not permitted without written authority from the proprietor. Property of FCI. Copyright FCI.

PRODUCT NUMBER
51730-188_
NOTE: 3

NOTES:

1. DIMENSIONS AND TOLERANCES ARE IN ACCORDANCE WITH ASME Y14.5M, 1994 UNLESS OTHERWISE SPECIFIED.

CONNECTOR NOTES:

- 2. HOUSING MATERIAL: UL 94 V-0 GLASS FILLED HIGH-TEMP THERMOPLASTIC
POWER CONTACT MATERIAL: COPPER ALLOY
SIGNAL PIN MATERIAL: COPPER ALLOY
 - 3. SEE ITEM 1 & 2 IN PRINT 10064183 FOR PLATING SPEC OF 51730-188 AND 51730-188LF RESPECTIVELY.
 - 4. MANUFACTURER'S NAME, DATE CODE AND OPTIONAL P/N TO APPEAR ON THIS SURFACE. THE P/N CAN BE OMITTED IF THERE IS NOT ENOUGH SPACE ON THIS SURFACE.
 - 5. PRODUCT SPECIFICATION GS-12-149.
APPLICATION SPECIFICATION BUS-20-067.
 - 6. PACKAGED IN TRAYS.
- PCB NOTES:
- 7. ALL HOLE DIAMETERS ARE FINISHED HOLE SIZE.
 - 8. MOUNTING HOLES, WHERE APPLICABLE, ARE UNPLATED.
 - 9. $\varnothing 1.151 \pm 0.025$ DRILLED HOLES PLATED WITH 0.008 MIN SnPb OR Sn OVER 0.03 TO 0.08 Cu PLATING TO ACHIEVE $\varnothing 1.02 \pm 0.07$ HOLE.
 - 10. "DIM XXX" TO BE DETERMINED BY THE CUSTOMER.
 - 11. CONNECTOR KEEP-OUT ZONE.

mat'l code		SEE NOTE		tolerances unless otherwise specified		CUSTOMER	
ltr	ecm no.	dr	date	linear	0.X ± 0.5	COPY	
A					0.XX ± 0.25	projection	www.fciconnect.com
				angles	0.XXX ± 0.1		title
				dr	0° ± 2°		4P + 24S + 4P
				engr	XQ Wang 01/06/11	scale	RIGHT ANGLE SOLDER HEADER
				chr	Anson Liu 01/06/11	product family	PwrBlade
				appd	PM Zheeng 01/06/11	size	code
					Joseph Hsiao 01/06/11	dwg no	213
sheet index	revision sheet					A	4 of 4

Pro/E

cage code 22526