

Excellent Integrated System Limited

Stocking Distributor

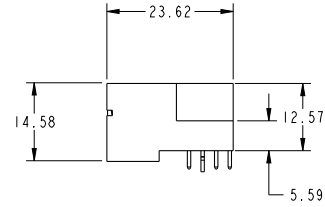
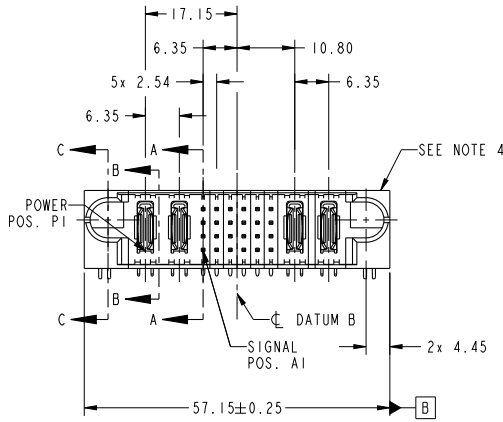
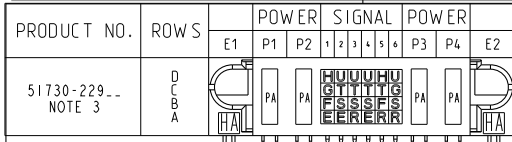
Click to view price, real time Inventory, Delivery & Lifecycle Information:

[FCI](#)

[51730-229LF](#)

For any questions, you can email us directly:

sales@integrated-circuit.com



CODE	DIM "M" MATING LENGTH	CONTACT TYPE
H	[5.59]	SIGNAL
G	[5.59]	SIGNAL
F	[5.59]	SIGNAL
E	[5.59]	SIGNAL
U	[6.86]	SIGNAL
T	[6.86]	SIGNAL
S	[6.86]	SIGNAL
R	[6.86]	SIGNAL
PA	[N/A]	POWER
HA	[N/A]	HOLD-DOWN

spec ref	*	dr	Ruan MT	2014/07/22	projection	MM	size	A4	scale	1:1													
tolerance std	ASME Y14.5	TOLERANCES UNLESS OTHERWISE SPECIFIED	eng	De-Ming Lu	2014/07/29		ecp no	-	rel level	Released													
surface	ASME Y14.5	<table border="1"> <tr> <td>linear</td> <td>0.X</td> <td>±0.5</td> </tr> <tr> <td></td> <td>0.XX</td> <td>±0.25</td> </tr> <tr> <td></td> <td>0.XXX</td> <td>±0.1</td> </tr> <tr> <td>angular</td> <td>0°</td> <td>±2°</td> </tr> </table>	linear	0.X	±0.5			0.XX	±0.25		0.XXX	±0.1	angular	0°	±2°	chr	-	appr	Pei-Ming Zheng	2014/07/29	product family	PwrBlade	rev
linear	0.X	±0.5																					
	0.XX	±0.25																					
	0.XXX	±0.1																					
angular	0°	±2°																					
		<table border="1"> <tr> <td>2P + 24S + 2P</td> <td>cat. no.</td> <td>-</td> </tr> <tr> <td>RIGHT ANGLE SOLDER HEADER</td> <td>Product - Customer Drw</td> <td>sheet 1 of 4</td> </tr> </table>	2P + 24S + 2P	cat. no.	-	RIGHT ANGLE SOLDER HEADER	Product - Customer Drw	sheet 1 of 4	<table border="1"> <tr> <td>dwg no</td> <td>51730-229</td> </tr> </table>		dwg no	51730-229	<table border="1"> <tr> <td>PDS: Rev :A</td> <td>STATUS:Released</td> <td>Printed: Jul 29, 2014</td> </tr> </table>		PDS: Rev :A	STATUS:Released	Printed: Jul 29, 2014						
2P + 24S + 2P	cat. no.	-																					
RIGHT ANGLE SOLDER HEADER	Product - Customer Drw	sheet 1 of 4																					
dwg no	51730-229																						
PDS: Rev :A	STATUS:Released	Printed: Jul 29, 2014																					

Prod File : REV C - 2009-08-09

1

2

3

PDS: Rev :A

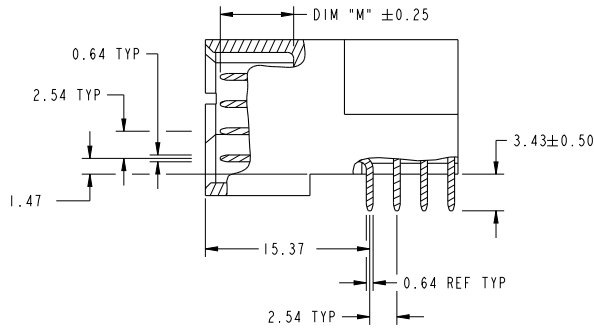
STATUS:Released

Printed: Jul 29, 2014

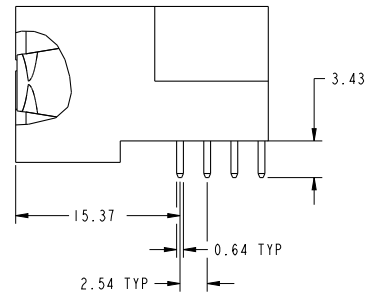


Copyright FCI.

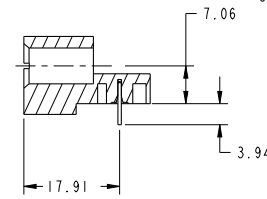
PRODUCT NUMBER
51730-229...
NOTE: 3



BROKEN-OUT SECTION A-A
SCALE 2:1



BROKEN-OUT SECTION B-B
SCALE 2:1



SECTION C-C

dr	Ruan MT	2014/07/22	projection	MM	size	A4	scale	1:1
eng	De-Ming Lu	2014/07/29			ecn no	-	rel level	Released
chr	-	-			product family	PwrBlade		
appr	Pei-Ming Zheng	2014/07/29			title	2P + 24S + 2P		dwg no 51730-229 rev A
www.fci.com			cat. no. -		Product - Customer Drw			

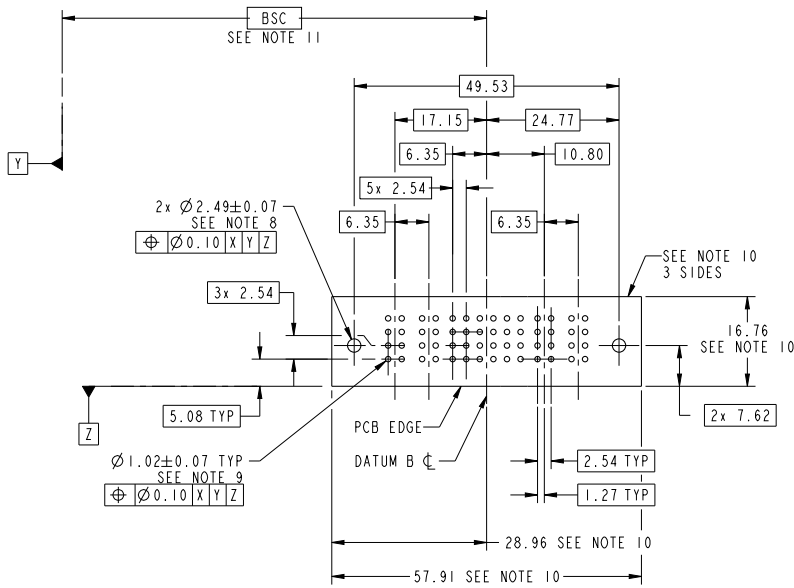
Print File - REV C - 2009-08-09



Copyright FCI.

PRODUCT NUMBER

51730-229-
NOTE: 3



RECOMMENDED PCB LAYOUT

dr	Ruan MT	2014/07/22	projection	MM	size	A4	scale	1:1
eng	De-Ming Lu	2014/07/29			ecn no	-	rel level	Released
chr	-	-			product family	PwrBlade		
appr	Pei-Ming Zheng	2014/07/29			2P + 24S + 2P RIGHT ANGLE SOLDER HEADER		www.fci.com	cat. no. -
					product family PwrBlade	rel level Released	dwg no 51730-229	rev A
					Product - Customer Drw	sheet 3 of 4		

Print File - REV C - 2009-06-09



PRODUCT NUMBER
51730-229- NOTE: 3

NOTES:

1. DIMENSIONS AND TOLERANCES ARE IN ACCORDANCE WITH ASME Y14.5M, 1994 UNLESS OTHERWISE SPECIFIED.

CONNECTOR NOTES:

- 2. HOUSING MATERIAL: UL 94 V-0 GLASS FILLED HIGH-TEMP THERMOPLASTIC
POWER CONTACT MATERIAL: COPPER ALLOY
SIGNAL PIN MATERIAL: COPPER ALLOY
 - 3. SEE ITEM 1 & 2 IN PRINT 10064183 FOR PLATING SPEC OF 51730-229 AND 51730-229LF RESPECTIVELY.
 - 4. MANUFACTURER'S NAME, DATE CODE AND OPTIONAL P/N TO APPEAR ON THIS SURFACE. THE MARK CAN BE OMITTED IF THERE IS NOT ENOUGH SPACE ON THIS SURFACE.
 - 5. PRODUCT SPECIFICATION GS-12-149.
APPLICATION SPECIFICATION BUS-20-067.
 - 6. PACKAGED IN TRAYS.
- PCB NOTES:
- 7. ALL HOLE DIAMETERS ARE FINISHED HOLE SIZE.
 - 8. MOUNTING HOLES, WHERE APPLICABLE, ARE UNPLATED.
 - 9. $\varnothing 1.151 \pm 0.025$ DRILLED HOLES PLATED WITH 0.008 MIN SnPb OR Sn OVER 0.03 TO 0.08 Cu PLATING TO ACHIEVE $\varnothing 1.02 \pm 0.07$ HOLE.
 - 10. CONNECTOR KEEP-OUT ZONE.
 - 11. DATUM AND BASIC DIMENSIONS ARE ESTABLISHED BY CUSTOMER.

dr	Ruan MT	2014/07/22	projection		size	A4	scale	1:1
eng	De-Ming Lu	2014/07/29			ecn no	-		
chr	-	-			rel level	Released		
appr	Pei-Ming Zheng	2014/07/29	product family	PwrBlade		rev	A	
			2P + 24S + 2P			cat. no.	-	
			RIGHT ANGLE SOLDER HEADER			Product - Customer Drw	sheet 4 of 4	

Print File - REV C - 2009-06-09



Copyright FCI.