

Excellent Integrated System Limited

Stocking Distributor

Click to view price, real time Inventory, Delivery & Lifecycle Information:

[FCI](#)

[51750-082LF](#)

For any questions, you can email us directly:

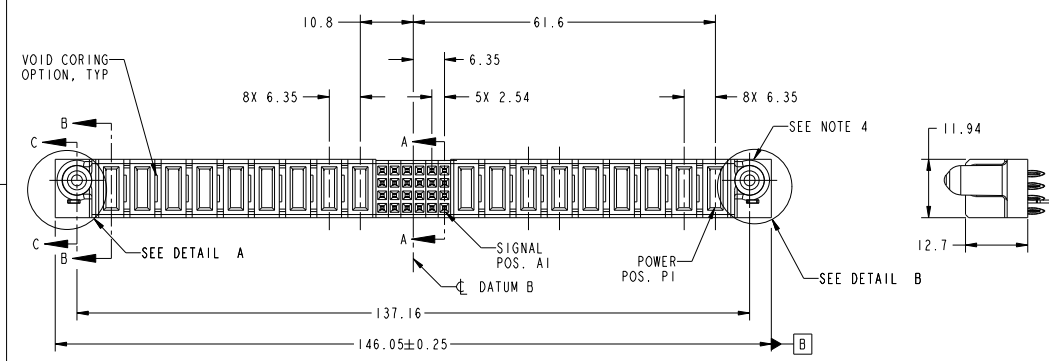
sales@integrated-circuit.com

Tous droits strictement réservés. Reproduction ou communication à des tiers interdite sous quelque forme que ce soit sans autorisation écrite du propriétaire. Propriété de FCI. Droits de reproduction FCI.

All rights strictly reserved. Reproduction or issue to third parties in any form whatever is not permitted without written authority from the proprietor. Property of FCI. Copyright FCI.



PRODUCT NO.	ROWS	POWER										SIGNAL				POWER										E1	
		E2	P18	P17	P16	P15	P14	P13	P12	P11	P10	6	5	4	3	2	1	P9	P8	P7	P6	P5	P4	P3	P2		P1
51750-082--	D C A																										
NOTE: 3			PF	PF	PC	PC	PC	PF	PF	PF	PF	PF	PF	PF	PF	PF	PF	PF	PF	PF	PF	PC	PC	PC	PF	PF	



CODE	DIM "M" MATING LENGTH	CONTACT TYPE
PF	[2.34]	POWER
F	[N/A]	SIGNAL
HA	[N/A]	HOLD-DOWN
PC	[1.07]	POWER

SEE NOTES				tolerances unless otherwise specified	
ltr	ecm no.	dr	date	linear	0.X ± 0.3
A	DG07-0496	JC	12/17/07	linear	0.XX ± 0.13
				linear	0.XXX ± 0.051
				angles	0° ± 2°
		dr	Jerome Chen	11/28/07	
		enr	Jerome Chen	11/28/07	
		chr	Gary Hsieh	11/28/07	
		oppd	Joseph Hsiao	11/28/07	
sheet index	revision sheet	A 1	A 2	A 3	A 4

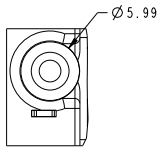
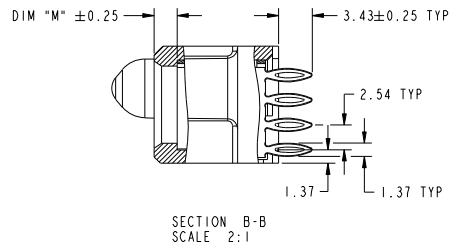
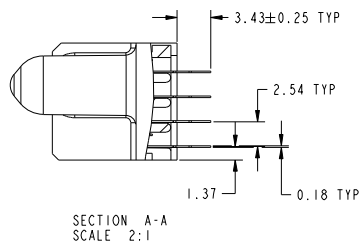
CUSTOMER		FCI	
COPY	projection	www.fciconnect.com	title
MM	MM	9P + 24S + 9P	VERTICAL PRESS-FIT RECEIPT
scale: 1:1	size	product family	PwrBlade
	dwg no	code	213
	A	51750-082	sheet 1 of 4
		cage code	22526

Tous droits strictement réservés. Reproduction ou communication à des tiers interdite sous quelque forme que ce soit sans autorisation écrite du propriétaire. Propriété de FCI. Droits de reproduction FCI.

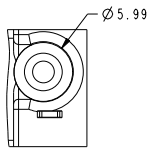
All rights strictly reserved. Reproduction or issue to third parties in any form whatever is not permitted without written authority from the proprietor. Property of FCI. Copyright FCI.



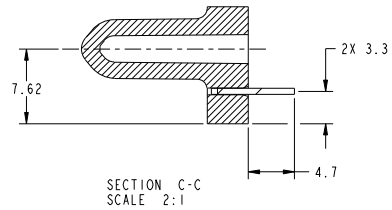
PRODUCT NUMBER
51750-082_
NOTE: 3



DETAIL A
SCALE 2:1



DETAIL B
SCALE 2:1



SECTION C-C
SCALE 2:1

mat'l code				tolerances unless otherwise specified		CUSTOMER		FCI	
ltr	ecm no.	dr	date	linear	0.X ±0.3	COPY	www.fciconnect.com		
A					0.XX ±0.13	projection	9P + 24S + 9P		
					0.XXX ±0.051	MM	VERTICAL PRESS-FIT RECEIPT		
				angles	0° ±2°	scale	product family	PwrBlade	code
				dr	Jerome Chen 11/28/07	1:1	size	dwg no	213
				engr	Jerome Chen 11/28/07		A	51750-082	sheet
				chr	Gary Hsieh 11/28/07				2 of 4
				oppd	Joseph Hsiao 11/28/07				
sheet index	revision sheet								

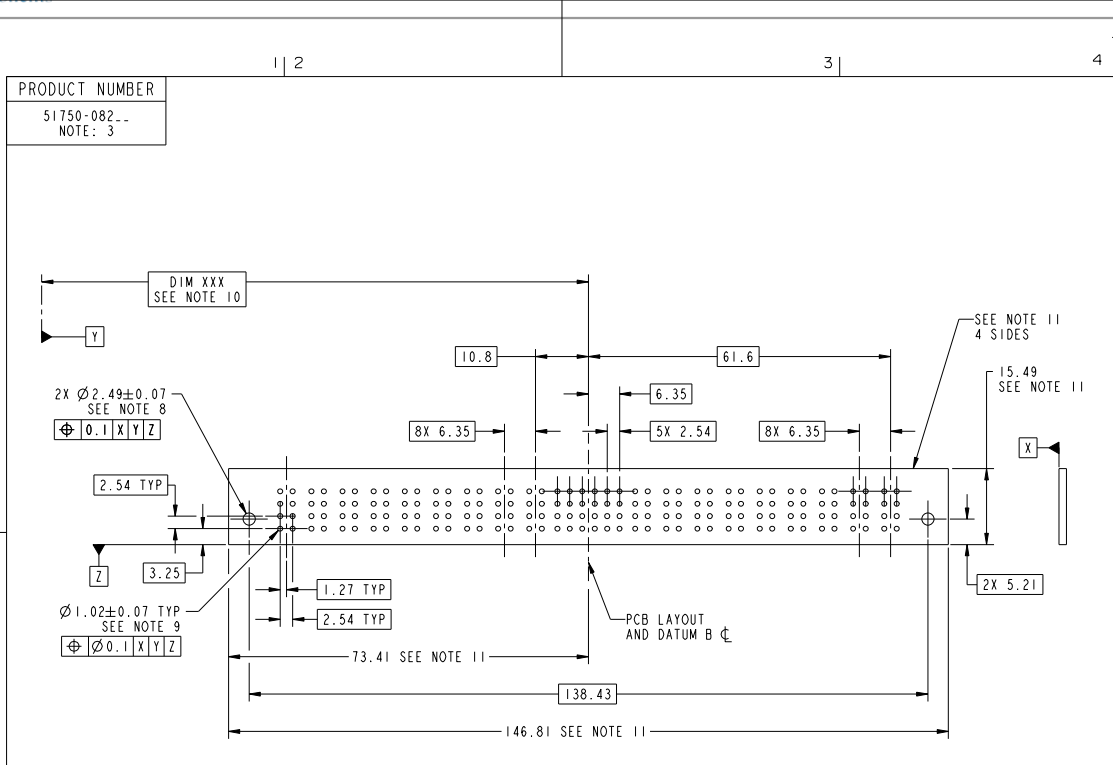
Pro/E

cage code 22526

Tous droits strictement réservés. Reproduction ou communication de des tiers interdite sous quelque forme que ce soit sans autorisation écrite du propriétaire. Propriété de FCI. Droits de reproduction FCI.



All rights strictly reserved. Reproduction or issue to third parties in any form whatever is not permitted without written authority from the proprietor. Property of FCI. Copyright FCI.



RECOMMENDED PCB LAYOUT

mat'l code				tolerances unless otherwise specified		CUSTOMER		FCI	
ltr	ecn no.	dr	date	linear	0.X ±0.3	COPY	www.fciconnect.com		
A					0.XX ±0.13	projection		title	
				angles	0.XXX ±0.051	MM		9P + 24S + 9P	
				dr	0° ±2°	scale		VERTICAL PRESS-FIT RECEPT	
				engr	Jerome Chen 11/28/07	1:1		product family PwrBlade code	
				chr	Jerome Chen 11/28/07			size 213	
				oppd	Gary Hsieh 11/28/07			sheet 3 of 4	
					Joseph Hsiao 11/28/07			dwg no 51750-082	
sheet index	revision sheet							cage code 22526	

Tous droits strictement réservés. Reproduction ou communication à des tiers interdite sous quelque forme que ce soit sans autorisation écrite du propriétaire. Propriété de FCI. Droits de reproduction FCI.

All rights strictly reserved. Reproduction or issue to third parties in any form whatever is not permitted without written authority from the proprietor. Property of FCI. Copyright FCI.

PRODUCT NUMBER
51750-082_
NOTE: 3

NOTES:

1. DIMENSIONS AND TOLERANCES ARE IN ACCORDANCE WITH ASME Y14.5M, 1994 UNLESS OTHERWISE SPECIFIED.

CONNECTOR NOTES:

- ② HOUSING MATERIAL: UL 94 V-0 GLASS FILLED HIGH-TEMP THERMOPLASTIC
POWER CONTACT MATERIAL: COPPER ALLOY
SIGNAL PIN MATERIAL: COPPER ALLOY
- 3. PLATING SPEC.
51750-082, 51750-082LF PLATING SPEC. WAS SHOWN IN THE PRINT OF 10064183.

④ MANUFACTURER'S NAME, P/N, AND DATE CODE TO APPEAR ON THIS SURFACE.

5. PRODUCT SPECIFICATION GS-12-149.
APPLICATION SPECIFICATION BUS-20-067.

6. PACKAGED IN TRAYS.

PCB NOTES:

- 7. ALL HOLE DIAMETERS ARE FINISHED HOLE SIZE.
- ⑧ MOUNTING HOLES, WHERE APPLICABLE, ARE UNPLATED.
- ⑨ $\varnothing 1.151 \pm 0.025$ DRILLED HOLES PLATED WITH 0.008 MIN SnPb OR Sn OVER 0.03 TO 0.08 Cu PLATING TO ACHIEVE $\varnothing 1.02 \pm 0.07$ HOLE.
- ⑩ "DIM XXX" TO BE DETERMINED BY THE CUSTOMER.
- ⑪ CONNECTOR KEEP-OUT ZONE.

mat'l code				tolerances unless otherwise specified		CUSTOMER		FCI	
ltr	ecm no.	dr	date	linear	0.X ± 0.3	COPY		www.fciconnect.com	
A					0.XX ± 0.13	projection	title		
				angles	0.XXX ± 0.051		9P + 24S + 9P		
				dr	0° ± 2°		VERTICAL PRESS-FIT RECEPT		
				engr	Jerome Chen 11/28/07	product family	PwrBlade	code	213
				chr	Jerome Chen 11/28/07	size	dwg no	sheet	4 of 4
				oppd	Gary Hsieh 11/28/07	scale	51750-082		
					Joseph Hsiao 11/28/07	1:1			
sheet index	revision sheet								

Pro/E

cage code 22526