

Excellent Integrated System Limited

Stocking Distributor

Click to view price, real time Inventory, Delivery & Lifecycle Information:

[FCI](#)

[51750-110LF](#)

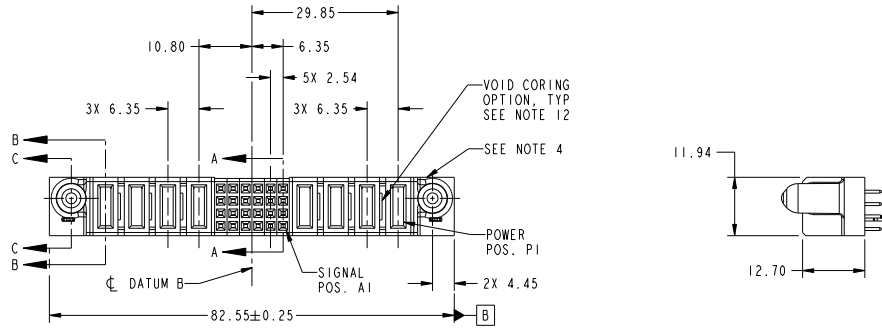
For any questions, you can email us directly:

sales@integrated-circuit.com

Tous droits strictement réservés. Reproduction ou communication à des tiers interdite sous quelque forme que ce soit sans autorisation écrite du propriétaire. Propriété de FCI. Droits de reproduction FCI.

All rights strictly reserved. Reproduction or issue to third parties in any form whatever is not permitted without written authority from the proprietor. Property of FCI. Copyright FCI.

PRODUCT NO. 51750-110... NOTE: 3	ROWS D C B A	POWER					SIGNAL					POWER				
		E2	P8	P7	P6	P5	*5	4	3	2	1	P4	P3	P2	P1	E1



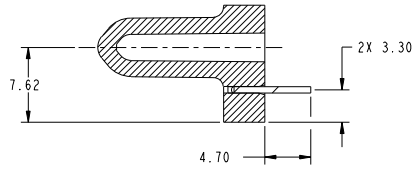
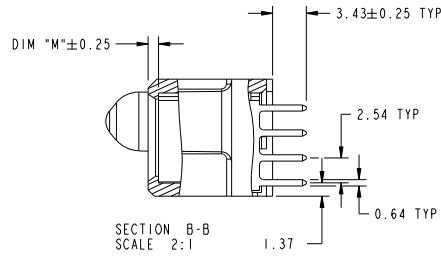
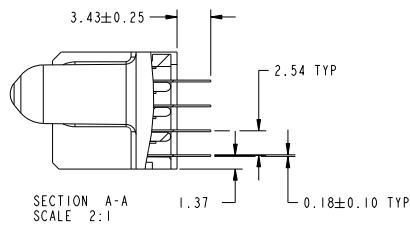
CODE	DIM "M" MATING LENGTH	CONTACT TYPE
E	[N/A]	SIGNAL
PA	[1.07]	POWER
HA	[N/A]	HOLD-DOWN
PD	[2.34]	POWER
X	OMITTED	OMITTED

mat'l code		SEE NOTES		tolerances unless otherwise specified		CUSTOMER		FCI	
ltr	ecm no.	dr	date			COPY		www.fciconnect.com	
A	DG11-0005	X0	01/06/11	linear	0.X ± 0.5	projection	title	4P + 24S + 4P	
					0.XX ± 0.25		VERTICAL STB RECEIPT		
				angles	0.XXX ± 0.1		product family	PwrBlade	
				dr	0° ± 2°	scale	size	dwg no	code
				enr	X0 Wang 01/06/11	1:1	A	51750-110	213
				chr	Anson Liu 01/06/11				sheet
				oppd	PM Zheng 01/06/11				1 of 4
					Joseph Hsiao 01/06/11				
sheet index	revision sheet	A 1	A 2	A 3	A 4				
Pro/E						3		cage code 22526	

Tous droits strictement réservés. Reproduction ou communication à des tiers interdite sous quelque forme que ce soit sans autorisation écrite du propriétaire. Propriété de FCI. Droits de reproduction FCI.

All rights strictly reserved. Reproduction or issue to third parties in any form whatever is not permitted without written authority from the proprietor. Property of FCI. Copyright FCI.

PRODUCT NUMBER
51750-110-
NOTE: 3



mat'l code				tolerances unless otherwise specified		CUSTOMER	
ltr	ecm no.	dr	date	linear	0.X ±0.5	COPY	FCI www.fciconnect.com
A					0.XX ±0.25	projection	
					0.XXX ±0.1	MM	
				angles	0° ±2°	scale	title
		dr			XJ Wang 01/06/11	1:1	4P + 24S + 4P
		engr			Anson Liu 01/06/11		VERTICAL STB RECEP
		chr			PM Zheeng 01/06/11		product family
		appd			Joseph Hsiao 01/06/11		PwrBlade
sheet index	revision sheet						code
							213
							sheet
							2 of 4

Pro/E

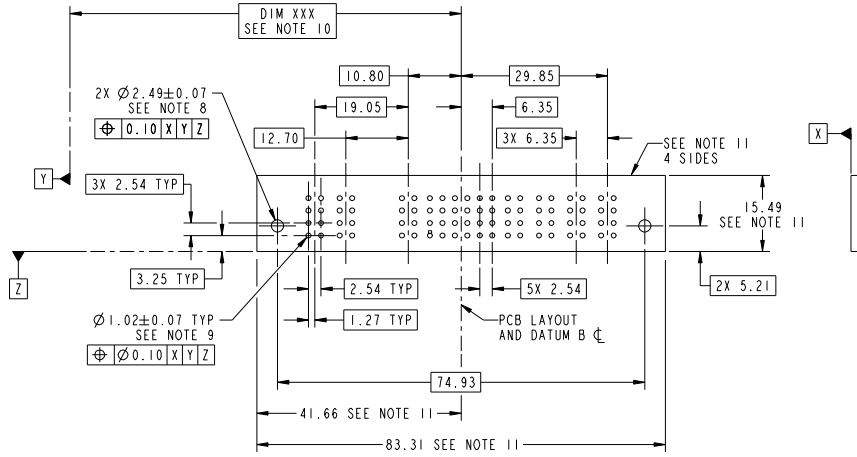
cage code 22526

Tous droits strictement réservés. Reproduction ou communication à des tiers interdite sous quelque forme que ce soit sans autorisation écrite du propriétaire. Propriété de FCI. Droits de reproduction FCI.

All rights strictly reserved. Reproduction or issue to third parties in any form whatever is not permitted without written authority from the proprietor. Property of FCI. Copyright FCI.



PRODUCT NUMBER
51750-110...
NOTE: 3



RECOMMENDED PCB LAYOUT

mat'l code				tolerances unless otherwise specified		CUSTOMER	
ltr	ecm no.	dr	date	linear	0.X ±0.5	COPY	www.fciconnect.com
A				linear	0.XX ±0.25	projection	4P + 24S + 4P
				angles	0.XXX ±0.1		VERTICAL STB RECEPT
				dr	0° ±2°	MM	product family PwrBlade code
				engr	XQ Wang 01/06/11	scale	size
				chr	Anson Liu 01/06/11	1:1	dwg no
				oppd	PM Zheeng 01/06/11		51750-110
sheet index	revision	sheet		oppd	Joseph Hsiao 01/06/11		213 sheet
							3 of 4

Pro/E

cage code 22526

Tous droits strictement réservés. Reproduction ou communication à des tiers interdite sous quelque forme que ce soit sans autorisation écrite du propriétaire. Propriété de FCI. Droits de reproduction FCI.

All rights strictly reserved. Reproduction or issue to third parties in any form whatever is not permitted without written authority from the proprietor. Property of FCI. Copyright FCI.

PRODUCT NUMBER
51750-110-
NOTE: 3

NOTES:

1. DIMENSIONS AND TOLERANCES ARE IN ACCORDANCE WITH ASME Y14.5M, 1994 UNLESS OTHERWISE SPECIFIED.

CONNECTOR NOTES:

- ② HOUSING MATERIAL: UL 94 V-0 GLASS FILLED HIGH-TEMP THERMOPLASTIC
POWER CONTACT MATERIAL: COPPER ALLOY
SIGNAL PIN MATERIAL: COPPER ALLOY
- 3. SEE ITEM 5 & 6 IN PRINT 10064183 FOR PLATING SPEC OF 51750-110 AND 51750-110LF RESPECTIVELY.

④ MANUFACTURER'S NAME, DATE CODE AND OPTIONAL P/N TO APPEAR ON THIS SURFACE. THE P/N CAN BE OMITTED IF THERE IS NOT ENOUGH SPACE ON THIS SURFACE.

5. PRODUCT SPECIFICATION GS-12-149.
APPLICATION SPECIFICATION BUS-20-067.

6. PACKAGED IN TRAYS.

PCB NOTES:

7. ALL HOLE DIAMETERS ARE FINISHED HOLE SIZE.

⑧ MOUNTING HOLES, WHERE APPLICABLE, ARE UNPLATED.

⑨ $\varnothing 1.151 \pm 0.025$ DRILLED HOLES PLATED WITH 0.008 MIN SnPb OR Sn OVER 0.03 TO 0.08 Cu PLATING TO ACHIEVE $\varnothing 1.02 \pm 0.07$ HOLE.

⑩ "DIM XXX" TO BE DETERMINED BY THE CUSTOMER.

⑪ CONNECTOR KEEP-OUT ZONE.

12. THE VOID CORING IN BETWEEN POWER MODULES, SIGNAL MODULES AND END MODULES ARE OPTIONAL AND THE SHAPE MAY BE DIFFERENT FOR OPTIMIZE THE MOLDING PROCESS. THE VOID CORING WILL NOT EFFECT TO PRODUCT FUNCTION.

mat'l code				tolerances unless otherwise specified		CUSTOMER		FCI	
ltr	ecm no.	dr	date	linear	0.X ± 0.5	COPY		www.fciconnect.com	
A					0.XX ± 0.25	projection	title		
				angles	0.XXX ± 0.1		4P + 24S + 4P		
				dr	0° ± 2°	MM	product family	PwrBlade	code
				engr	XQ Wang 01/06/11	scale	size	dwg no	213
				chr	Anson Liu 01/06/11	1:1	A	51750-110	sheet
				oppd	PM Zheeng 01/06/11				4 of 4
sheet index	revision sheet								

Pro/E

cage code 22526