

Excellent Integrated System Limited

Stocking Distributor

Click to view price, real time Inventory, Delivery & Lifecycle Information:

[FCI](#)

[51770-022](#)

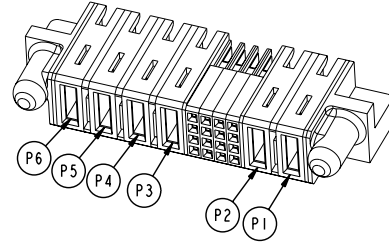
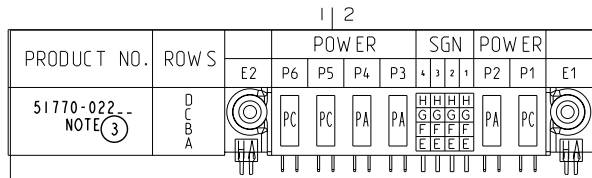
For any questions, you can email us directly:

sales@integrated-circuit.com

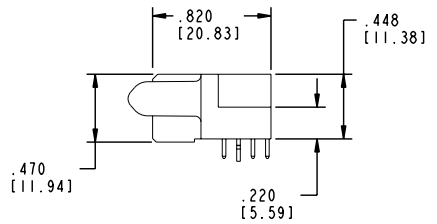
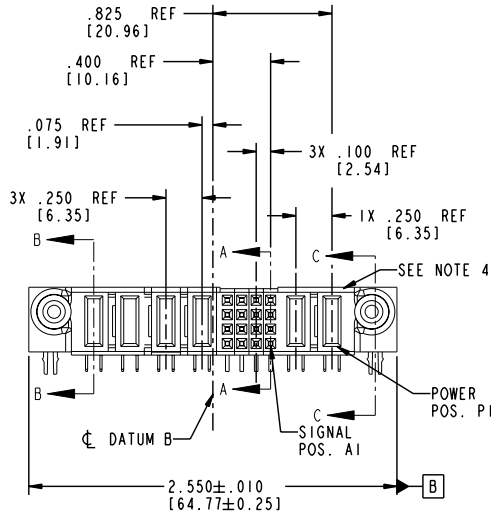
Tous droits strictement réservés. Reproduction ou communication, o des liens interdite sous quelque forme que ce soit sans autorisation écrite du propriétaire. Propriété de c FCI. Droits de reproduction FCI.

FCI

All rights strictly reserved. Reproduction or issue to third parties in any form whatever is not permitted without written authority from the proprietor. Property of FCI. Copyright FCI.



TOP SIDE VIEW



CODE	DIM "M"	MATING LENGTH	CONTACT TYPE
PA	.042	[1.07]	POWER
H	N/A	[N/A]	SIGNAL
G	N/A	[N/A]	SIGNAL
F	N/A	[N/A]	SIGNAL
E	N/A	[N/A]	SIGNAL
HA	N/A	[N/A]	HOLD-DOWN
PC	.092	[2.34]	POWER

mat'l code SEE NOTE 2				tolerances unless otherwise specified		CUSTOMER		FCI www.fciconnect.com	
ltr	ecn no.	dr	date	linear	XX±.01/0.X±0.3	COPY		title	
A	DG05-0196	SW	06/28/05		.XX±.005/0.X±0.13	projection		2P + 16S + 4P	
B	DG05-0222	SW	07/14/05	angles	.XX±.002/0.X±0.051	INCH/MM		R/A SOLDER RECEPTACLE	
				dr	STEVEN WANG 06/28/05	product family		PwrBlade	
				enrg	STEVEN WANG 07/04/05	size		code 213	
				chr	VICTOR LIM 06/28/05	scale		51770-022	
				appd	JOSEPH HSIA 06/28/05	A		sheet 1 of 4	
sheet index	revision sheet	B 1	B 2	B 3	B 4				

Pro/E

cage code 22526

PDM: Rev:B

STATUS:Released

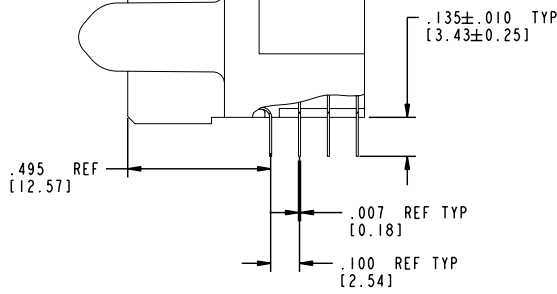
Printed: Dec 20, 2010

Tous droits strictement réservés. Reproduction ou communication, o des liens interdite sous quelque forme que ce soit sans autorisation écrite du propriétaire. Propriété de c FCI. Droits de reproduction FCI.

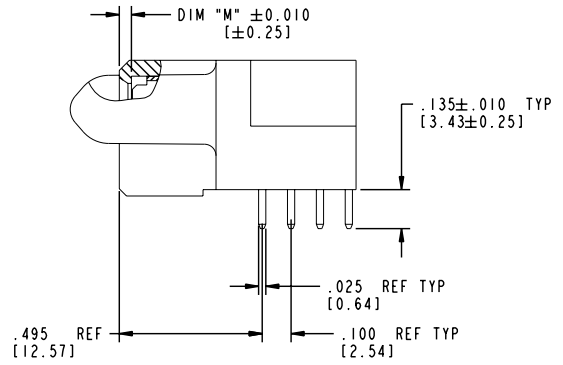
FCI

All rights strictly reserved. Reproduction or issue to third parties in any form whatever is not permitted without written authority from the proprietor. Property of FCI. Copyright FCI.

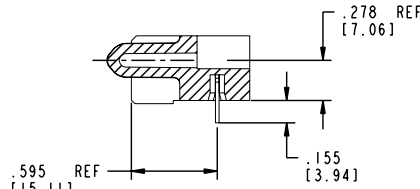
PRODUCT NUMBER
51770-022--
NOTE ③





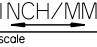
BROKEN-OUT SECTION A-A
SCALE 2:1



BROKEN-OUT SECTION B-B
SCALE 2:1



SECTION C-C

mat'l code		SEE NOTE 2		tolerances unless otherwise specified		CUSTOMER		 www.fciconnect.com	
lfr	ecn no.	dr	date	linear	$.XX \pm .01/0.X \pm 0.3$ $.XXX \pm .005/0.XX \pm 0.13$ $.XXXX \pm .002/0.XX \pm 0.051$	projection	COPY	title	2P + 16S + 4P R/A SOLDER RECEPTACLE
B				angles	$0^\circ \pm 2^\circ$			product family	PwrBlade
		dr	STEVEN WANG	06/28/05		scale	1:1	size	A
		enrg	STEVEN WANG	07/04/05				dwg no	51770-022
		chr	VICTOR LIN	06/28/05				code	213
		appd	JOSEPH HSIA	06/28/05				sheet	2 of 4
sheet index	revision sheet								

Pro/E

cage code **22526**

PDM: Rev:B

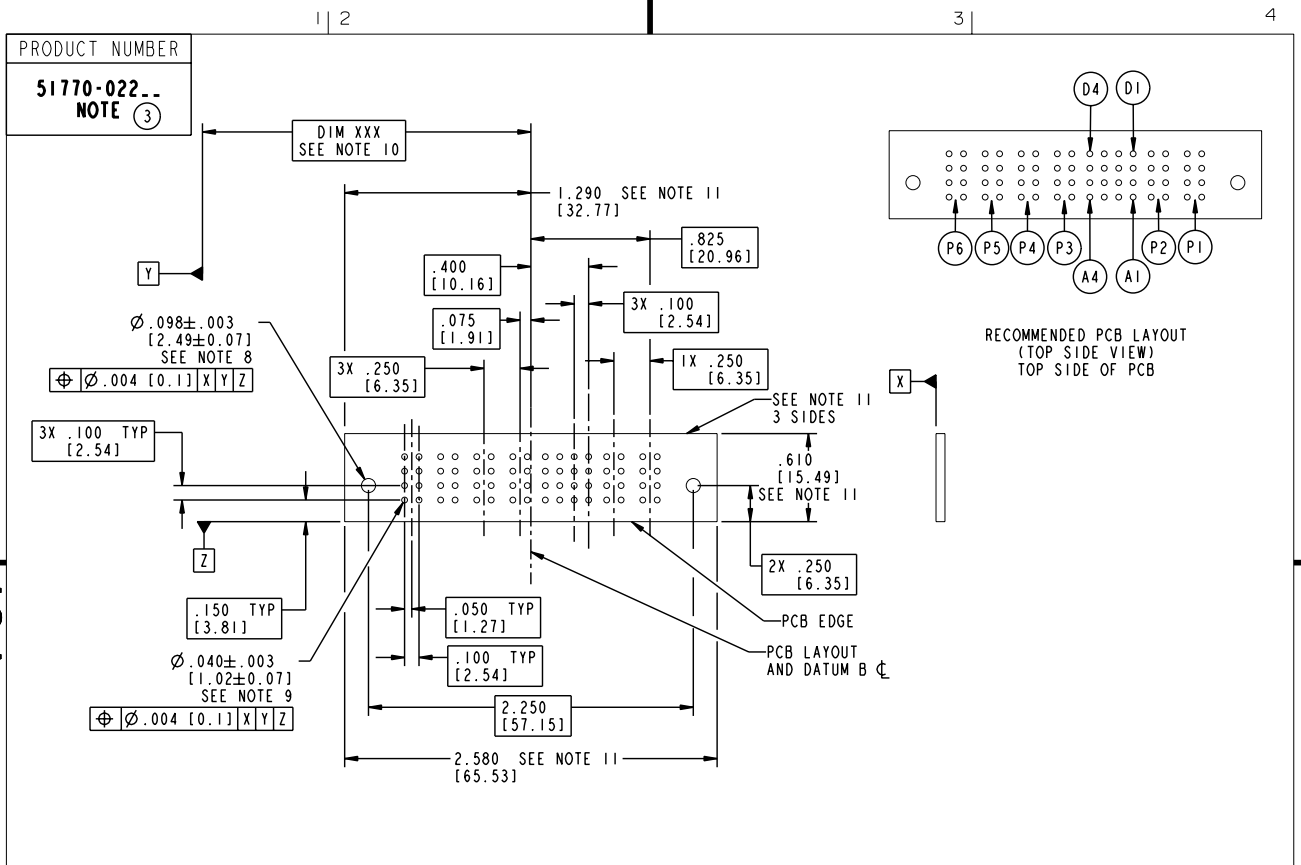
STATUS: **Released**

Printed: Dec 20, 2010

Tous droits strictement réservés. Reproduction ou communication, o des liens interdite sous quelque forme que ce soit sans autorisation écrite du propriétaire. Propriété de c FCI. Droits de reproduction FCI.

FCI

All rights strictly reserved. Reproduction or issue to third parties in any form whatever is not permitted without written authority from the proprietor. Property of FCI. Copyright FCI.



mat'l code		SEE NOTE 2		tolerances unless otherwise specified		CUSTOMER		www.fciconnect.com	
ltr	ecn no.	dr	date	linear	$XY \pm .01/0.X \pm 0.3$ $XYZ \pm .005/0.XY \pm 0.13$ $XYZ \pm .002/0.XYZ \pm 0.051$	COPY	projection	title	2P + 16S + 4P R/A SOLDER RECEPTACLE
B				angles	$0^\circ \pm 2^\circ$			product family	PwrBlade
		dr	STEVEN WANG	06/28/05			INCH/MM	size	code
		enrg	STEVEN WANG	07/04/05			scale	dwg no	213
		chr	VICTOR LIN	06/28/05			1:1	A	51770-022
		appd	JOSEPH HSIA	06/28/05					sheet
sheet index	revision sheet								3 of 4

Pro/E

cage code 22526

PDM: Rev:B

STATUS: Released

Printed: Dec 20, 2010

Tous droits strictement réservés. Reproduction ou communication, o des liers interdite sous quelque forme que ce soit sans autorisation écrite du propriétaire. Propriété de c FCI. Droits de reproduction FCI.

FCI

All rights strictly reserved. Reproduction or issue to third parties in any form whatever is not permitted without written authority from the proprietor. Property of FCI. Copyright FCI.

PRODUCT NUMBER
51770-022
NOTE ③

NOTES:

1. DIMENSIONS AND TOLERANCES ARE IN ACCORDANCE WITH ASME Y14.5M, 1994 UNLESS OTHERWISE SPECIFIED.

CONNECTOR NOTES:

② HOUSING MATERIAL: UL 94 V-0 GLASS FILLED
HIGH-TEMP THERMOPLASTIC
POWER CONTACT MATERIAL: COPPER ALLOY
SIGNAL PIN MATERIAL: COPPER ALLOY

③ PLATING:

51770-022: SIGNAL PIN: 30u"/0.76um Au OVER 50u"/1.27um Ni ON THE WHOLE AREA
AND 100u"/2.54um SnPb OVER 50u"/1.27um Ni ON THE TERMINATION AREA
POWER PIN: 30u"/0.76um Au OVER 50u"/1.27um Ni ON THE CONTACT AREA
AND 100u"/2.54um SnPb OVER 50u"/1.27um Ni ON THE TERMINATION AREA

51770-022LF: SIGNAL PIN: 30u"/0.76um Au OVER 50u"/1.27um Ni ON THE WHOLE AREA
AND 78u"/2.00um Sn OVER 50u"/1.27um Ni ON THE TERMINATION AREA
POWER PIN: 30u"/0.76um Au OVER 50u"/1.27um Ni ON THE CONTACT AREA
AND 78u"/2.00um Sn OVER 50u"/1.27um Ni ON THE TERMINATION AREA

PART NUMBER 51770-022LF MEETS EUROPEAN UNION DIRECTIVE AND OTHER COUNTRY REGULATIONS AS DESCRIBED IN GS-22-008.

THE HOUSING WILL WITHSTAND EXPOSURE TO 260° PEAK TEMPERATURE FOR 10 SECONDS IN A WAVE SOLDER APPLICATION WITH A CIRCUIT BOARD.

④ MANUFACTURER'S NAME, P/N, AND DATE CODE TO APPEAR ON THIS SURFACE.
⑤ PRODUCT SPECIFICATION GS-12-149.
⑥ APPLICATION SPECIFICATION BUS-20-067.
⑦ PACKAGED IN TRAYS.

PCB NOTES:


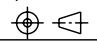
⑦ ALL HOLE DIAMETERS ARE FINISHED HOLE SIZE.

⑧ MOUNTING HOLES, WHERE APPLICABLE, ARE UNPLATED.

⑨ $\varnothing .0453 \pm .0010$ [1.151 ± 0.025] DRILLED HOLES PLATED WITH .0003 [0.008] MIN SnPb OVER .001 [0.03] TO .003 [0.08] Cu PLATING TO ACHIEVE $\varnothing .040 \pm .003$ [1.02 ± .07] HOLE.

⑩ "DIM XXX" TO BE DETERMINED BY THE CUSTOMER.

⑪ CONNECTOR KEEP-OUT ZONE.

mat'l code				SEE NOTE 2		tolerances unless otherwise specified		CUSTOMER		 www.fciconnect.com	
ltr	ecr no.	dr	date	linear	$.XX \pm .01/0.X \pm 0.3$	projection	COPY	title		2P + 16S + 4P	
B				angles	$.XXX \pm .005/0.X \pm 0.13$			R/A SOLDER RECEPTACLE		code 213	
				dr	$.XXX \pm .002/0.X \pm 0.051$	$0^\circ \pm 2^\circ$		product family		PwrBlade	
				engr	STEVEN WANG	06/28/05	INCH/MM	size		dwg no	
				chr	STEVEN WANG	07/04/05	scale	A		51770-022	
				appd	VICTOR LIN	06/28/05	1:1			sheet 4 of 4	
					JOSEPH HSIA	06/28/05				cage code 22526	
sheet index	revision sheet										

Pro/E

PDM: Rev:B

STATUS: Released

Printed: Dec 20, 2010