

## **Excellent Integrated System Limited**

Stocking Distributor

Click to view price, real time Inventory, Delivery & Lifecycle Information:

[FCI](#)

[51770-035LF](#)

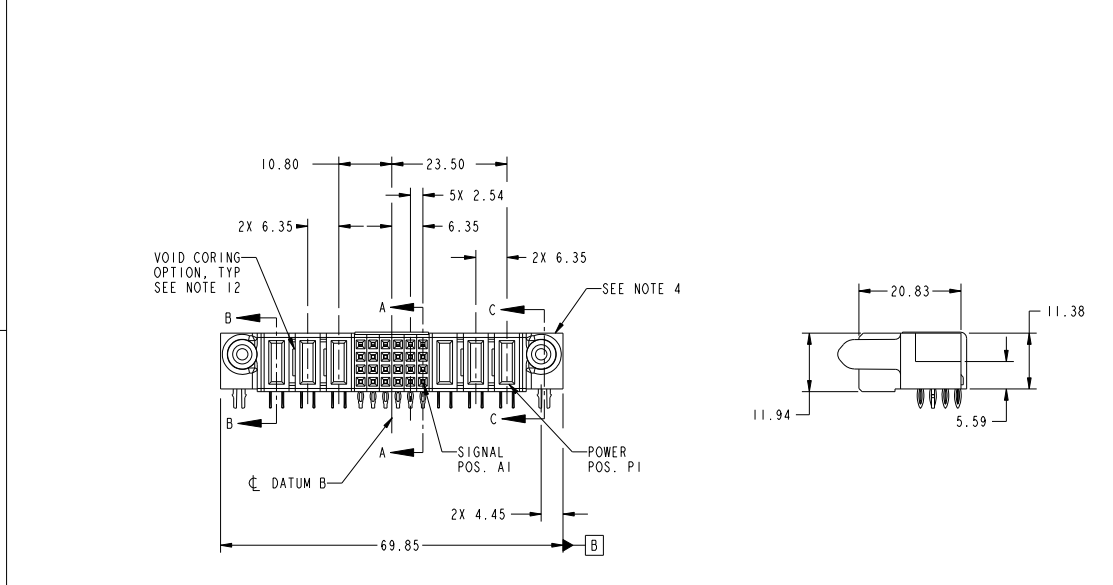
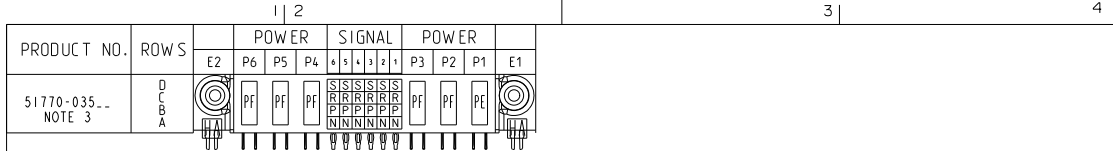
For any questions, you can email us directly:

[sales@integrated-circuit.com](mailto:sales@integrated-circuit.com)

Tous droits strictement réservés. Reproduction ou communication de ces liens matériels sans aucune forme que ce soit sans autorisation écrite du propriétaire. Propriété de FCI. Droits de reproduction FCI.



All rights strictly reserved. Reproduction or issue to third parties in any form whatever is not permitted without written authority from the proprietor. Property of FCI. Copyright FCI.



CODE	DIM "M" MATING LENGTH	CONTACT TYPE
PF	[2.34]	POWER
S	[N/A]	SIGNAL
R	[N/A]	SIGNAL
P	[N/A]	SIGNAL
N	[N/A]	SIGNAL
HA	[N/A]	HOLD-DOWN
PE	[1.07]	POWER

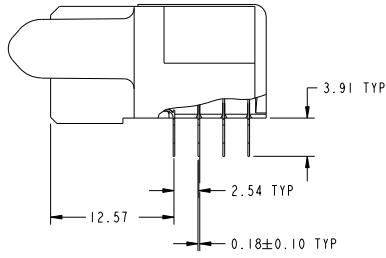
mat'l code				SEE NOTE 2		tolerances unless otherwise specified	
ltr	ecn no.	dr	date			0.X ±0.5	
A	DG08-0285	W D	10/14/08	linear		0.XX ±0.25	
B	DG08-0319	W D	11/13/08			0.XXX ±0.1	
				angles		0° ±2°	
				dr	Warren Du	09/05/08	
				enr	Warren Du	09/05/08	
				chr	Gary Hsieh	09/05/08	
				oppd	Joseph Hsiao	09/05/08	
sheet index	revision sheet	B 1	B 2	B 3	B 4		

CUSTOMER		FCI	
www.fciconnect.com		www.fciconnect.com	
COPY	projection	title	3P + 24S + 3P
		R/A PRESSFIT RECEPTACLE	
product family	PwrBlade	code	213
size	A	dwg no	51770-035
scale	1:1	sheet	1 of 4
cage code	22526		

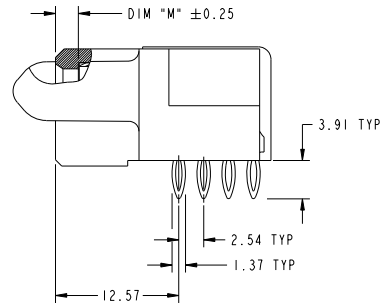
Tous droits strictement réservés. Reproduction ou communication à des tiers interdite sans autorisation écrite du propriétaire. Propriété de FCI. Droits de reproduction FCI.

All rights strictly reserved. Reproduction or issue to third parties in any form whatever is not permitted without written authority from the proprietor. Property of FCI. Copyright FCI.

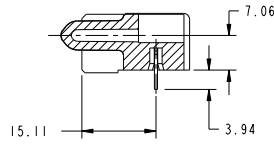
PRODUCT NUMBER  
51770-035...  
NOTE 3



BROKEN-OUT SECTION A-A  
SCALE 2:1



BROKEN-OUT SECTION B-B  
SCALE 2:1



SECTION C-C

mat'l code				SEE NOTE 2		tolerances unless otherwise specified		CUSTOMER		FCI		www.fciconnect.com	
ltr	ecm no.	dr	date	linear	0.X ±0.5	projection	COPY		title				
B					0.XX ±0.25	MM	R/A PRESSFIT RECEPTACLE		3P + 24S + 3P				
				angles	0.XXX ±0.1	scale	1:1		product family PwrBlade code				
				dr	0° ±2°				size				
				engr	Warren Du 09/05/08				dwg no				
				chr	Warren Du 09/05/08				51770-035				
				oppd	Gary Hsieh 09/05/08				213				
					Joseph Hsia 09/05/08				sheet				
sheet index	revision sheet								2 of 4				

Pro/E

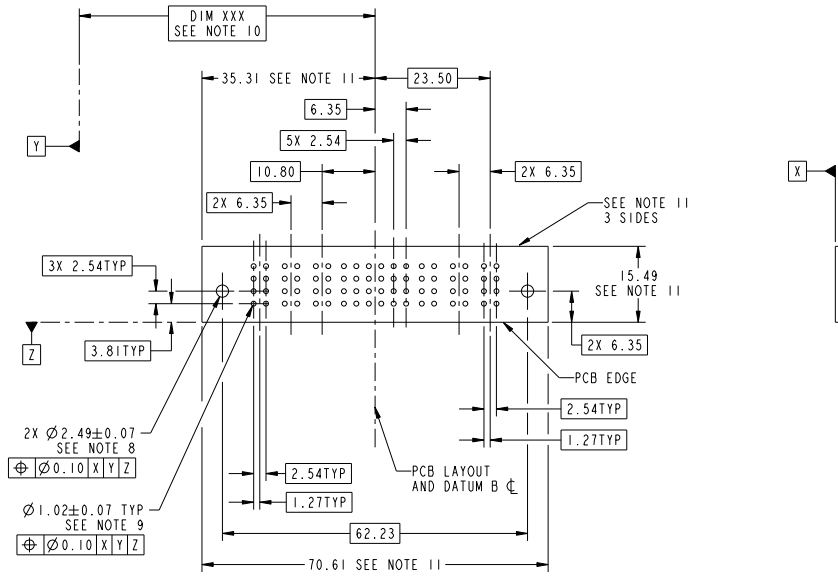
cage code 22526

Tous droits strictement réservés. Reproduction ou communication à des tiers interdite sous quelque forme que ce soit sans autorisation écrite du propriétaire. Propriété de FCI. Droits de reproduction FCI.

All rights strictly reserved. Reproduction or issue to third parties in any form whatever is not permitted without written authority from the proprietor. Property of FCI. Copyright FCI.



PRODUCT NUMBER  
51770-035...  
NOTE 3



RECOMMENDED PCB LAYOUT

mat'l code		SEE NOTE		tolerances unless otherwise specified		CUSTOMER	
ltr	ecm no.	dr	date	linear	0.X ± 0.5	COPY	www.fciconnect.com
B				linear	0.XX ± 0.25	projection	title
				angles	0.XXX ± 0.1		3P + 24S + 3P
				angles	0° ± 2°		R/A PRESSFIT RECEPTACLE
		dr	Warren Du	09/05/08		product family	PwrBlade
		engr	Warren Du	09/05/08		size	code
		chr	Gary Hsieh	09/05/08		dwg no	213
		oppd	Joseph Hsiao	09/05/08		51770-035	3 of 4
sheet index	revision sheet					scale	
						1:1	

Pro/E

cage code 22526

Tous droits strictement réservés. Reproduction ou communication à des tiers interdite sous quelque forme que ce soit sans autorisation écrite du propriétaire. Propriété de FCI. Droits de reproduction FCI.

All rights strictly reserved. Reproduction or issue to third parties in any form whatever is not permitted without written authority from the proprietor. Property of FCI. Copyright FCI.



**PRODUCT NUMBER**  
51770-035-\_  
NOTE 3

**NOTES:**

1. DIMENSIONS AND TOLERANCES ARE IN ACCORDANCE WITH ASME Y14.5M, 1994 UNLESS OTHERWISE SPECIFIED.

**CONNECTOR NOTES:**

- ② HOUSING MATERIAL: UL 94 V-0 GLASS FILLED HIGH-TEMP THERMOPLASTIC  
POWER CONTACT MATERIAL: COPPER ALLOY  
SIGNAL PIN MATERIAL: COPPER ALLOY
- 3. SEE ITEM 7 & 8 IN PRINT 10064183 FOR PLATING SPEC OF 51770-035 AND 51770-035LF RESPECTIVELY.
- ④ MANUFACTURER'S NAME, P/N, AND DATE CODE TO APPEAR ON THIS SURFACE.
- 5. PRODUCT SPECIFICATION GS-12-149.  
APPLICATION SPECIFICATION BUS-20-067.
- 6. PACKAGED IN TRAYS.

**PCB NOTES:**

- 7. ALL HOLE DIAMETERS ARE FINISHED HOLE SIZE.
- ⑧ MOUNTING HOLES, WHERE APPLICABLE, ARE UNPLATED.
- ⑨  $\varnothing 1.151 \pm 0.025$  DRILLED HOLES PLATED WITH 0.008 MIN SnPb OR Sn OVER 0.03 TO 0.08 Cu PLATING TO ACHIEVE  $\varnothing 1.02 \pm 0.07$  HOLE.
- ⑩ "DIM XXX" TO BE DETERMINED BY THE CUSTOMER.
- ⑪ CONNECTOR KEEP-OUT ZONE.
- 12. THE VOID CORING IN BETWEEN POWER MODULES, SIGNAL MODULES AND END MODULES ARE OPTIONAL AND THE SHAPE MAY BE DIFFERENT FOR OPTIMIZE THE MOLDING PROCESS. THE VOID CORING WILL NOT EFFECT TO PRODUCT FUNCTION.
- 13. USE FCI CAM TOOL 430140-XXX TO APPLY CONNECTOR TO PCB.

mat'l code		SEE NOTE 2		tolerances unless otherwise specified		CUSTOMER		FCI		www.fciconnect.com	
ltr	ecm no.	dr	date	linear	0.X ± 0.5	COPY		projection		title	
B					0.XX ± 0.25	A		MM		3P + 24S + 3P	
				angles	0.XXX ± 0.1	1:1		A		R/A PRESSFIT RECEPTACLE	
				dr	0° ± 2°	scale		product family		PwrBlade	
				engr	Warren Du 09/05/08	size		dwg no		213	
				chr	Warren Du 09/05/08	A		51770-035		sheet	
				oppd	Gary Hsieh 09/05/08					4 of 4	
					Joseph Hsia 09/05/08						
sheet index	revision sheet										

Pro/E

cage code 22526