

Excellent Integrated System Limited

Stocking Distributor

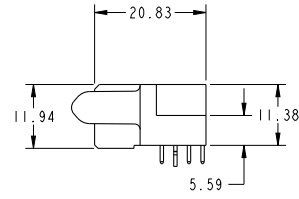
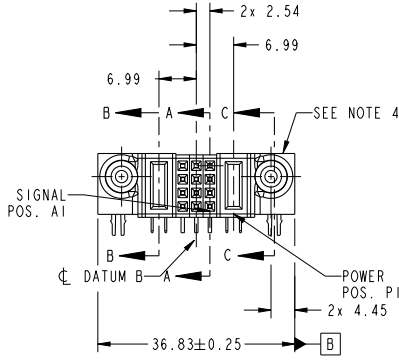
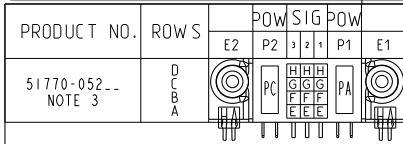
Click to view price, real time Inventory, Delivery & Lifecycle Information:

[FCI](#)

[51770-052LF](#)

For any questions, you can email us directly:

sales@integrated-circuit.com



CODE	DIM "M" MATING LENGTH	CONTACT TYPE
PC	[2.34]	POWER
PA	[1.07]	POWER
H	[N/A]	SIGNAL
G	[N/A]	SIGNAL
F	[N/A]	SIGNAL
E	[N/A]	SIGNAL
HA	[N/A]	HOLD-DOWN

spec ref	SEE NOTES	dr	Luo Weller	2013/05/14	projection		size	A4	scale	1:1
tolerance std	SEE NOTES	eng	Luo Weller	2013/05/23	product family	PwrBlade	ecn no	-	rel level	Released
TOLERANCES UNLESS OTHERWISE SPECIFIED		chr	-	-			rel level	Released		
surface	linear	0.X	±0.50		IP+12S+IP R/A SOLDER RECEPTACLE	www.fci.com	cat. no.	Product - Customer Drw	sheet 1 of 4	
		0.XX	±0.25							
		0.XXX	±0.10							
	angular	0°	±2°							

Prod File - REC - 2009-08-09

1

2

3

PDS: Rev :A

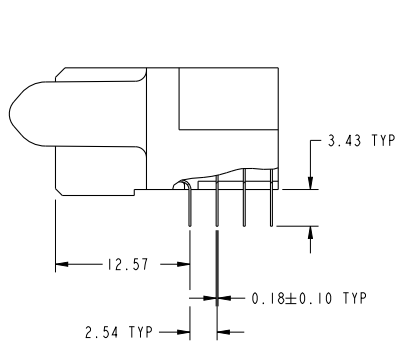
STATUS:Released

Printed: May 23, 2013

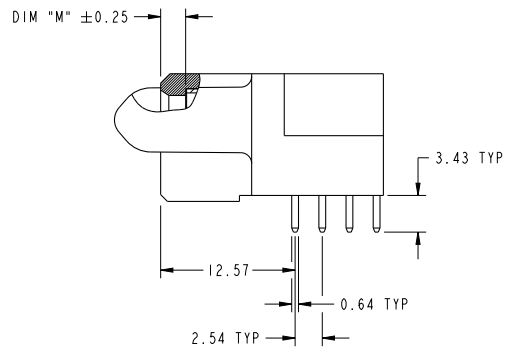


Copyright FCI.

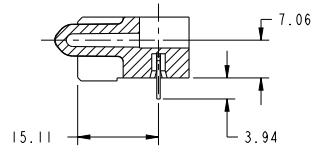
PRODUCT NUMBER
51770-052...
NOTE 3



BROKEN-OUT SECTION A-A
SCALE 2:1



BROKEN-OUT SECTION B-B
SCALE 2:1



SECTION C-C

dr	Luo Weller	2013/05/14	projection	MM	size	A4	scale	1:1		
eng	Luo Weller	2013/05/23			ecn no	-				
chr	-	-	product family	PwrBlade	rel level	Released				
appr	Pei-Ming Zheng	2013/05/23	www.fci.com		cat. no.	IP+12S+IP	dwg no	51770-052	rev	A
						R/A SOLDER RECEPTACLE				
					Product - Customer Drw	sheet 2 of 4				

Prod File - REV C - 2009-06-09

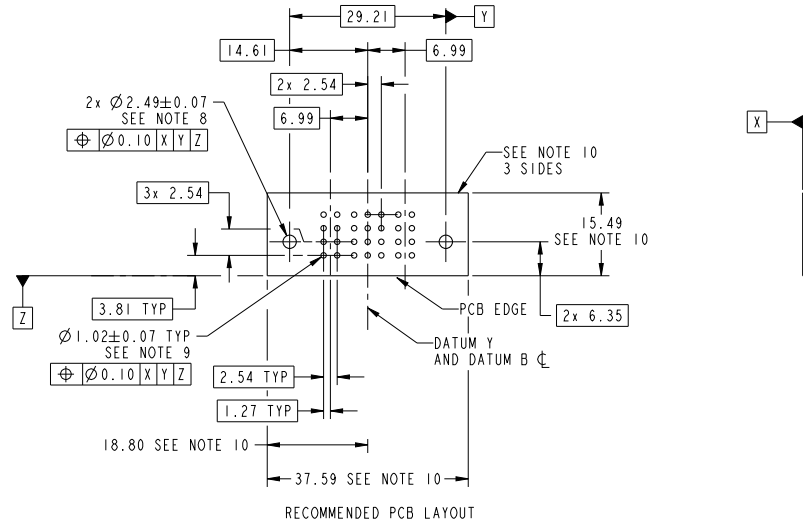
PDS: Rev :A

STATUS:Released

Printed: May 23, 2013

Copyright FCI.

PRODUCT NUMBER
51770-052...
NOTE 3



RECOMMENDED PCB LAYOUT

dr	Luo Weller	2013/05/14	projection	MM	size	A4	scale	1:1
eng	Luo Weller	2013/05/23			ecn no	-	rel level	
chr	-	-			product family	PwrBlade	Released	
appr	Pei-Ming Zheng	2013/05/23				title IP+I2S+IP R/A SOLDER RECEPTACLE		rev A
www.fci.com			cat. no.			Product - Customer Drw		sheet 3 of 4

Print File - REV C - 2009-06-09



Copyright FCI.

2 3 4

PRODUCT NUMBER
51770-052-
NOTE 3

- NOTES:
- DIMENSIONS AND TOLERANCES ARE IN ACCORDANCE WITH ASME Y14.5M, 1994 UNLESS OTHERWISE SPECIFIED.
- CONNECTOR NOTES:
- HOUSING MATERIAL: UL 94 V-0 GLASS FILLED HIGH-TEMP THERMOPLASTIC
POWER CONTACT MATERIAL: COPPER ALLOY
SIGNAL PIN MATERIAL: COPPER ALLOY
 - SEE ITEM 5 & 6 IN PRINT 10064183 FOR PLATING SPEC OF 51770-052 AND 51770-052LF RESPECTIVELY.
 - MANUFACTURER'S NAME, DATE CODE AND OPTIONAL P/N TO APPEAR ON THIS SURFACE. THE MARK CAN BE OMITTED IF THERE IS NOT ENOUGH SPACE ON THIS SURFACE.
 - PRODUCT SPECIFICATION GS-12-149.
APPLICATION SPECIFICATION BUS-20-067.
 - PACKAGED IN TRAYS.
- PCB NOTES:
- ALL HOLE DIAMETERS ARE FINISHED HOLE SIZE.
 - MOUNTING HOLES, WHERE APPLICABLE, ARE UNPLATED.
 - $\varnothing 1.151 \pm 0.025$ DRILLED HOLES PLATED WITH 0.008 MIN SnPb OR Sn OVER 0.03 TO 0.08 Cu PLATING TO ACHIEVE $\varnothing 1.02 \pm .07$ HOLE.
 - CONNECTOR KEEP-OUT ZONE.



Copyright FCI.

dr	Luo Weller	2013/05/14	projection	MM	size	A4	scale	1:1
eng	Luo Weller	2013/05/23			ecn no	-	rel level	Released
chr	-	-	product family	PwrBlade				
appr	Pei-Ming Zheng	2013/05/23	www.fci.com		cat. no.	IP+12S+IP	title	R/A SOLDER RECEPTACLE
			www.fci.com	cat. no.	Product - Customer Drw	Product - Customer Drw	dwg no	51770-052
					cat. no.	Product - Customer Drw	sheet	4 of 4
					cat. no.	Product - Customer Drw	rev	A

Print File - REC - 2009-01-09

1 2 3 PDS: Rev :A STATUS:Released Printed: May 23, 2013