

Excellent Integrated System Limited

Stocking Distributor

Click to view price, real time Inventory, Delivery & Lifecycle Information:

[FCI](#)

[51771-011](#)

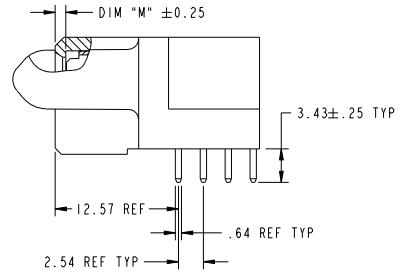
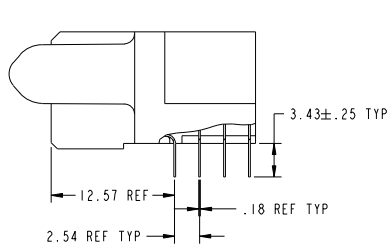
For any questions, you can email us directly:

sales@integrated-circuit.com

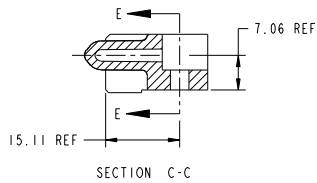
Tous droits strictement réservés. Reproduction ou communication à des tiers interdite sous quelque forme que ce soit sans autorisation écrite du propriétaire. Propriété de FCI. Droits de reproduction FCI.

All rights strictly reserved. Reproduction or issue to third parties in any form whatever is not permitted without written authority from the proprietor. Property of FCI. Copyright FCI.

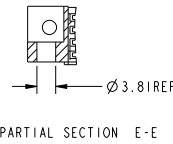
PRODUCT NUMBER
51771-011...
NOTE 3



BROKEN-OUT SECTION A-A
SCALE 2:1



BROKEN-OUT SECTION B-B
SCALE 2:1



mat'l code				SEE NOTE 2	tolerances unless otherwise specified	CUSTOMER	FCI	
lfr	ecm no.	dr	date	linear	0.X ± 0.3	COPY	www.fciconnect.com	
A				angles	0.XXX ± 0.13	projection	title	
				dr	0.XXX ± 0.051	MM	32S + 11P	
				enrg	0° ± 2°	scale	R/A STB RECEPTACLE	
				chr	JM GUO 09/17/06	1:1	product family PwrBlade code	
				oppd	RYAN YUAN 09/17/06		size	
					BEER FU 09/17/06		dwg no	
					JOSEPH HSIA 09/17/06		51771-011	
sheet index	revision sheet						213 sheet	
							2 of 4	

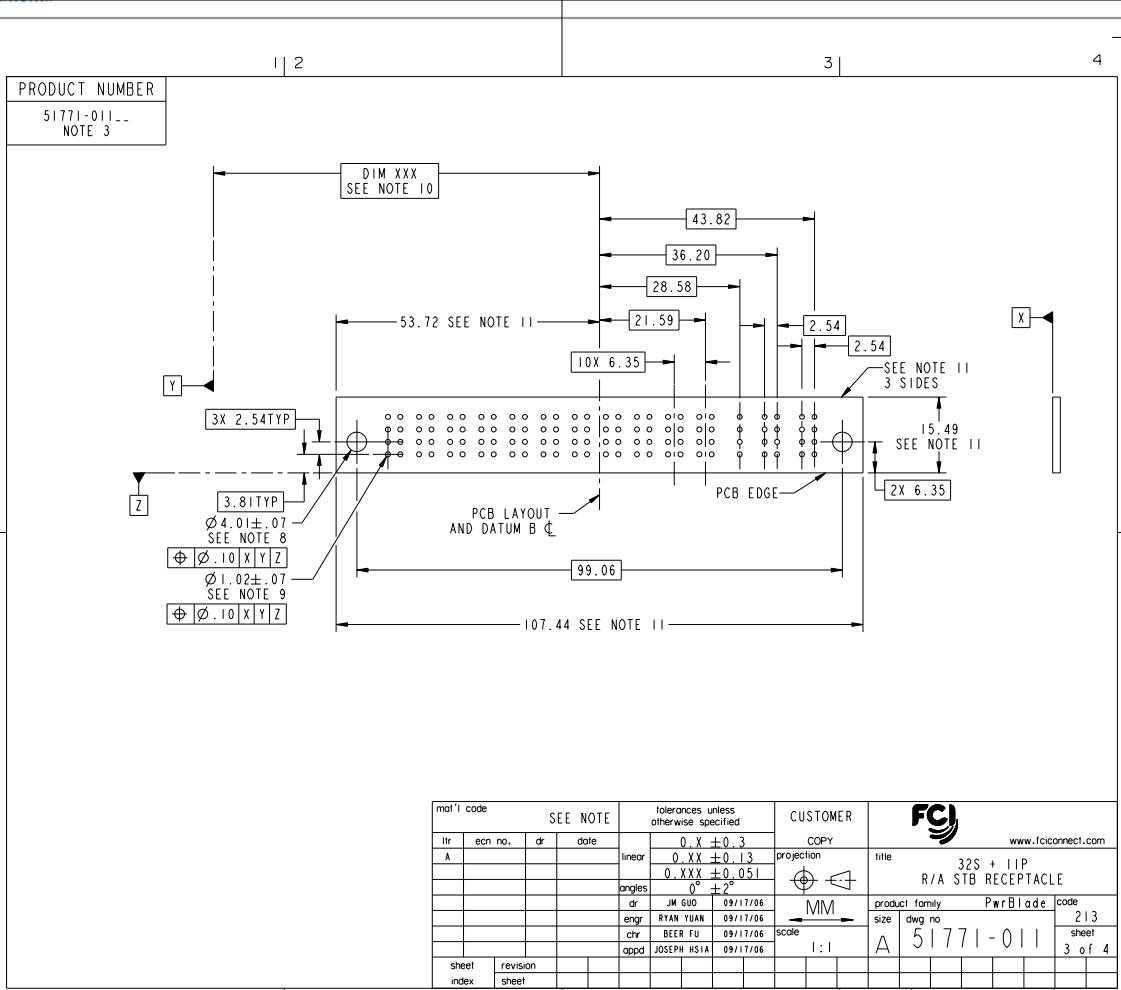
Pro/E

cage code 22526

Tous droits strictement réservés. Reproduction ou communication à des tiers interdite sous quelque forme que ce soit sans autorisation écrite du propriétaire. Propriété de FCI. Droits de reproduction FCI.



All rights strictly reserved. Reproduction or issue to third parties in any form whatever is not permitted without written authority from the proprietor. Property of FCI. Copyright FCI.



mat'l code		SEE NOTE		tolerances unless otherwise specified		CUSTOMER	
ltr	ecm no.	dr	date	linear	0.X ± 0.3	COPY	www.fciconnect.com
A				projection	0.XX ± 0.13	MM	32S + 11P
				angles	0.XXX ± 0.051	1:1	R/A STB RECEPTACLE
				dr	0° ± 2°		product family PwrBlade
				enr	JM GUO 09/17/06		size
				chr	RYAN YUAN 09/17/06		dwg no
				oppd	BEER FU 09/17/06		51771-011
					JOSEPH HSIA 09/17/06		213
sheet index	revision sheet						3 of 4

Pro/E 3 cage code 22526 4

Tous droits strictement réservés. Reproduction ou communication à des tiers interdite sous quelque forme que ce soit sans autorisation écrite du propriétaire. Propriété de FCI. Droits de reproduction FCI.

All rights strictly reserved. Reproduction or issue to third parties in any form whatever is not permitted without written authority from the proprietor. Property of FCI. Copyright FCI.

PRODUCT NUMBER
51771-011...
NOTE 3

NOTES:

1. DIMENSIONS AND TOLERANCES ARE IN ACCORDANCE WITH ASME Y14.5M, 1994 UNLESS OTHERWISE SPECIFIED.

CONNECTOR NOTES:

- 2. HOUSING MATERIAL: UL 94 V-0 GLASS FILLED HIGH-TEMP THERMOPLASTIC
POWER CONTACT MATERIAL: COPPER ALLOY
SIGNAL PIN MATERIAL: COPPER ALLOY
 - 3. PLATING:
51771-011, 51771-011LF PLATING SPEC. WAS SHOWN IN THE PRINT OF 10064183.
 - 4. MANUFACTURER'S NAME, P/N, AND DATE CODE TO APPEAR ON THIS SURFACE.
 - 5. PRODUCT SPECIFICATION GS-12-149.
APPLICATION SPECIFICATION BUS-20-067.
 - 6. PACKAGED IN TRAYS.
- PCB NOTES:
- 7. ALL HOLE DIAMETERS ARE FINISHED HOLE SIZE.
 - 8. MOUNTING HOLES, WHERE APPLICABLE, ARE UNPLATED.
 - 9. $\varnothing 1.151 \pm 0.025$ DRILLED HOLES PLATED WITH 0.008 MIN SnPb OR Sn OVER 0.03 TO 0.08 Cu PLATING TO ACHIEVE $\varnothing 1.02 \pm .07$ HOLE.
 - 10. "DIM XXX" TO BE DETERMINED BY THE CUSTOMER.
 - 11. CONNECTOR KEEP-OUT ZONE.

mat'l code				SEE NOTE 2		tolerances unless otherwise specified		CUSTOMER	
lfr	ecm no.	dr	date	linear	0.X ± 0.3	projection	COPY		
A				angles	0.XX ± 0.13		www.fciconnect.com		
				dr	0.XXX ± 0.051		title		
				engr	0° ± 2°	scale	32S + 11P		
				chr	JM GUO 09/17/06	1:1	R/A STB RECEPTACLE		
				oppd	RYAN YUAN 09/17/06		product family PwrBlade code		
					BEER FU 09/17/06		size dwg no 213		
					JOSEPH HSIA 09/17/06		sheet 4 of 4		
sheet index	revision sheet								

cage code 22526