

Excellent Integrated System Limited

Stocking Distributor

Click to view price, real time Inventory, Delivery & Lifecycle Information:

[FCI](#)

[51771-015LF](#)

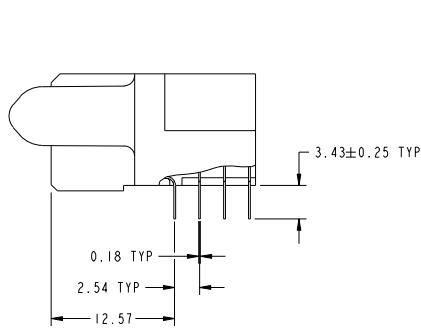
For any questions, you can email us directly:

sales@integrated-circuit.com

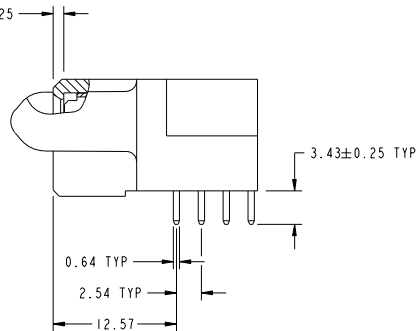
Tous droits strictement réservés. Reproduction ou communication à des tiers interdite sous quelque forme que ce soit sans autorisation écrite du propriétaire. Propriété de FCI. Droits de reproduction FCI.

All rights strictly reserved. Reproduction or issue to third parties in any form whatever is not permitted without written authority from the proprietor. Property of FCI. Copyright FCI.

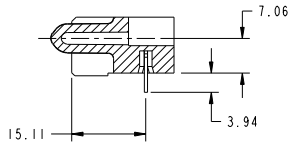
PRODUCT NUMBER
51771-015...
NOTE 3



BROKEN-OUT SECTION A-A
SCALE 2:1



BROKEN-OUT SECTION B-B
SCALE 2:1



SECTION C-C

mat'l code				SEE NOTE 2		tolerances unless otherwise specified		CUSTOMER	
ltr	ecm no.	dr	date	linear	0.X ±0.3	projection	www.fciconnect.com		
A				angles	0.XX ±0.13	MM	40S + 6P		
				dr	0.XXX ±0.051	scale	R/A SOLDER RECEPTACLE		
				engr	0° ±2°	1:1	product family PwrBlade code		
				chr	Sincere He 11/01/07		size dwg no 51771-015 sheet		
				oppd	Sincere He 11/01/07		2 of 4		
					Gary Hsieh 11/01/07				
					Joseph Hsiao 11/01/07				
sheet index	revision sheet						cage code 22526		

Pro/E

PDM: Rev:A

STATUS: Released

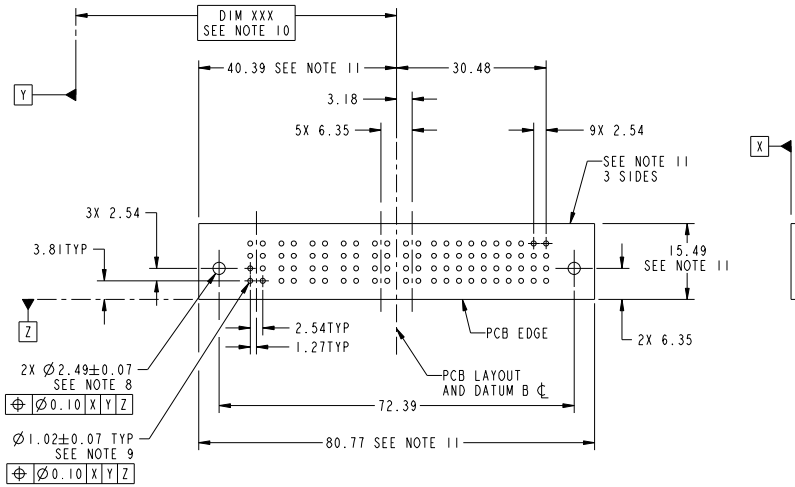
Printed: Dec 20, 2010

Tous droits strictement réservés. Reproduction ou communication à des tiers interdite sous quelque forme que ce soit sans autorisation écrite du propriétaire. Propriété de FCI. Droits de reproduction FCI.

All rights strictly reserved. Reproduction or issue to third parties in any form whatever is not permitted without written authority from the proprietor. Property of FCI. Copyright FCI.



PRODUCT NUMBER
51771-015...
NOTE 3



RECOMMENDED PCB LAYOUT

mat'l code		SEE NOTE 2	tolerances unless otherwise specified	CUSTOMER	FCI		www.fciconnect.com
lfr	ecm no.	dr	date	linear	0.X ± 0.3	COPY	
A				linear	0.XX ± 0.13	projection	title
				angles	0.XXX ± 0.051	MM	40S + 6P
				dr	0° ± 2°	MM	R/A SOLDER RECEPTACLE
				engr	Sincere He 11/01/07	scale	product family
				chr	Sincere He 11/01/07	1:1	PwrBlade
				opnd	Gary Hsieh 11/01/07		code
					Joseph Hsia 11/01/07		213
sheet index	revision sheet						3 of 4

Pro/E

cage code 22526

Tous droits strictement réservés. Reproduction ou communication à des tiers interdite sous quelque forme que ce soit sans autorisation écrite du propriétaire. Propriété de FCI. Droits de reproduction FCI.

All rights strictly reserved. Reproduction or issue to third parties in any form whatever is not permitted without written authority from the proprietor. Property of FCI. Copyright FCI.

PRODUCT NUMBER
51771-015_
NOTE 3

NOTES:

1. DIMENSIONS AND TOLERANCES ARE IN ACCORDANCE WITH ASME Y14.5M, 1994 UNLESS OTHERWISE SPECIFIED.

CONNECTOR NOTES:

- 2. HOUSING MATERIAL: UL 94 V-0 GLASS FILLED HIGH-TEMP THERMOPLASTIC
POWER CONTACT MATERIAL: COPPER ALLOY
SIGNAL PIN MATERIAL: COPPER ALLOY
- 3. PLATING:
51771-015, 51771-015LF PLATING SPEC. WAS SHOWN IN THE PRINT OF 10064183.
- 4. MANUFACTURER'S NAME, P/N, AND DATE CODE TO APPEAR ON THIS SURFACE.
- 5. PRODUCT SPECIFICATION GS-12-149.
APPLICATION SPECIFICATION BUS-20-067.
- 6. PACKAGED IN TRAYS.

PCB NOTES:

- 7. ALL HOLE DIAMETERS ARE FINISHED HOLE SIZE.
- 8. MOUNTING HOLES, WHERE APPLICABLE, ARE UNPLATED.
- 9. $\varnothing 1.151 \pm 0.025$ DRILLED HOLES PLATED WITH 0.008 MIN SnPb OR Sn OVER 0.03 TO 0.08 Cu PLATING TO ACHIEVE $\varnothing 1.02 \pm .07$ HOLE.
- 10. "DIM XXX" TO BE DETERMINED BY THE CUSTOMER.
- 11. CONNECTOR KEEP-OUT ZONE.

mat'l code				SEE NOTE 2		tolerances unless otherwise specified		CUSTOMER	
ltr	ecm no.	dr	date	linear	$0.X \pm 0.3$	projection	COPY		
A				angles	$0.XX \pm 0.13$		www.fciconnect.com		
				dr	$0.XXX \pm 0.051$		title 40S + 6P		
				engr	$0^\circ \pm 2^\circ$	scale	R/A SOLDER RECEPTACLE		
				chr	Sincere He 11/01/07	1:1	product family PwrBlade code 213		
				oppd	Gary Hsieh 11/01/07		size dwg no 51771-015 sheet 4 of 4		
					Joseph Hsia 11/01/07				
sheet index	revision sheet						cage code 22526		