

Excellent Integrated System Limited

Stocking Distributor

Click to view price, real time Inventory, Delivery & Lifecycle Information:

[FCI](#)

[51772-019LF](#)

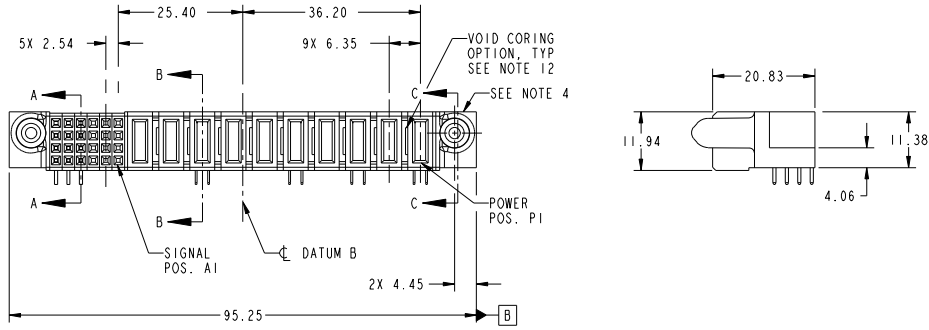
For any questions, you can email us directly:

sales@integrated-circuit.com

Tous droits strictement réservés. Reproduction ou communication à des tiers interdite sous quelque forme que ce soit sans autorisation écrite du propriétaire. Propriété de FCI. Droits de reproduction FCI.

All rights strictly reserved. Reproduction or issue to third parties in any form whatever is not permitted without written authority from the proprietor. Property of FCI. Copyright FCI.

PRODUCT NO.	ROWS	SIGNAL				POWER										E1	
		E2	4	3	2	P10	P9	P8	P7	P6	P5	P4	P3	P2	P1		
51772-019-- NOTE 3	D E F G H PA	⊙	H	G	F	E	X	X	PA	X	X	PC	X	PC	X	PC	⊙



CODE	DIM "M" MATING LENGTH	CONTACT TYPE
PC	[2.34]	POWER
H	[N/A]	SIGNAL
G	[N/A]	SIGNAL
F	[N/A]	SIGNAL
E	[N/A]	SIGNAL
PA	[1.07]	POWER

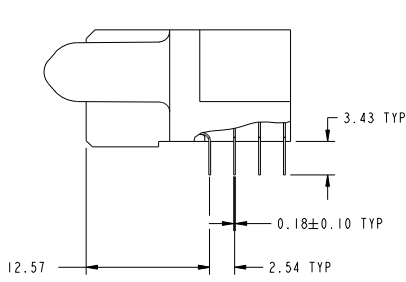
mat'l code				SEE NOTE 2		tolerances unless otherwise specified		CUSTOMER	
lfr	ecn no.	dr	date	linear	0.X ± 0.5	COPY		www.fciconnect.com	
A	DG10-0247	WD	07/01/10	angles	0.XX ± 0.25	projection	title	10P + 24S	
				dr	0.XXX ± 0.1	MM	R/A SOLDER RECEPTACLE	product family PwrBlade	
				engr	0° ± 2°	scale	size	dwg no	code
				chr	Warren Du 04/30/10	1:1	A	51772-019	213
				oppd	Warren Du 04/30/10				sheet
					PM ZHENG 04/30/10				1 of 4
					Joseph Hsiao 04/30/10				
sheet index	revision sheet	A 1	A 2	A 3	A 4				

Tous droits strictement réservés. Reproduction ou communication à des tiers interdite sous quelque forme que ce soit sans autorisation écrite du propriétaire. Propriété de FCI. Droits de reproduction FCI.

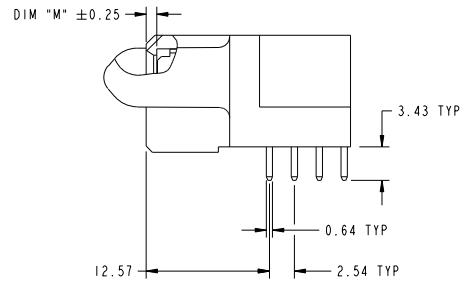
All rights strictly reserved. Reproduction or issue to third parties in any form whatever is not permitted without written authority from the proprietor. Property of FCI. Copyright FCI.



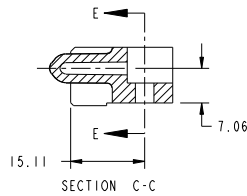
PRODUCT NUMBER
51772-019...
NOTE 3



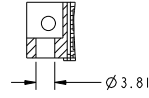
BROKEN-OUT SECTION A-A
SCALE 2:1



BROKEN-OUT SECTION B-B
SCALE 2:1



SECTION C-C



PARTIAL SECTION E-E

mat'l code				SEE NOTE 2	tolerances unless otherwise specified	CUSTOMER	FCI	
ltr	ecm no.	dr	date	linear	0.X ±0.5	COPY	www.fciconnect.com	
A					0.XX ±0.25	projection	title	
					0.XXX ±0.1		10P + 24S	
				angles	0° ±2°		R/A SOLDER RECEPTACLE	
				dr	Warren Du 04/30/10		product family	
				engr	Warren Du 04/30/10		PwrBlade	
				chr	PM ZHENG 04/30/10	scale	size	dwg no
				oppd	Joseph Hsiao 04/30/10	1:1	A	51772-019
sheet index	revision sheet							code
								213 sheet
								2 of 4

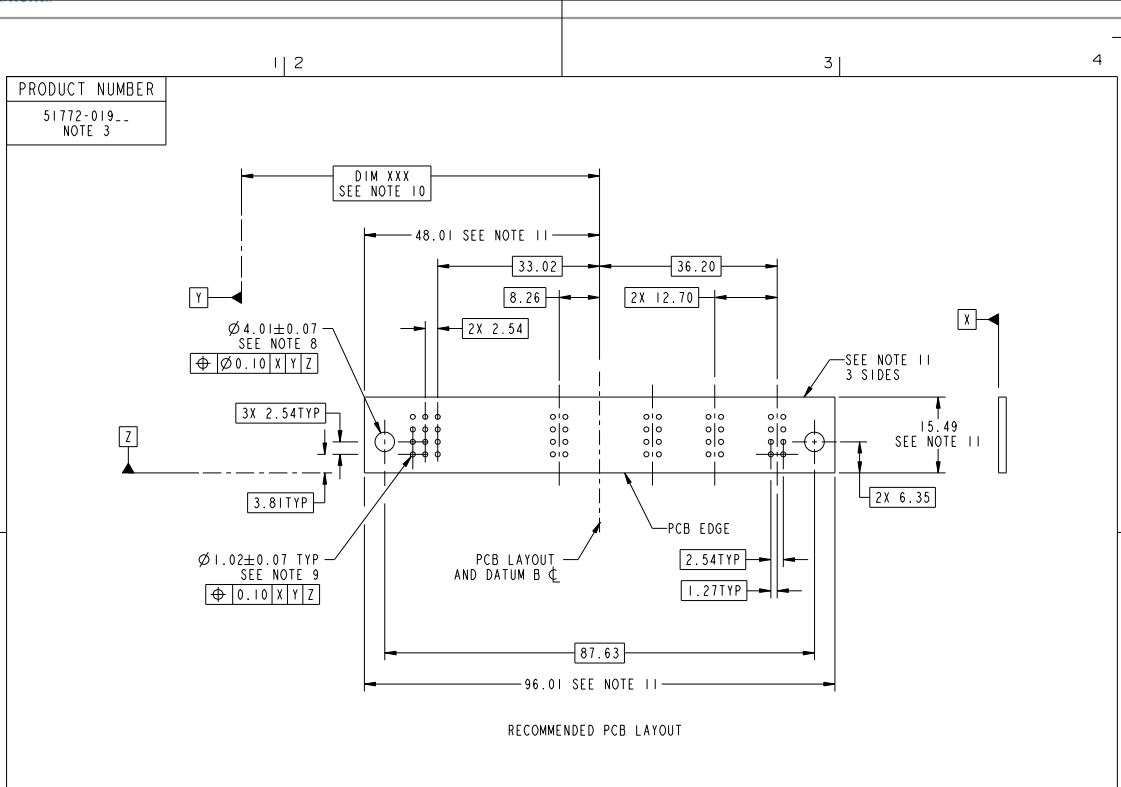
Pro/E

cage code 22526

Tous droits strictement réservés. Reproduction ou communication à des tiers interdite sous quelque forme que ce soit sans autorisation écrite du propriétaire. Propriété de FCI. Droits de reproduction FCI.



All rights strictly reserved. Reproduction or issue to third parties in any form whatever is not permitted without written authority from the proprietor. Property of FCI. Copyright FCI.



mat'l code		SEE NOTE		tolerances unless otherwise specified		CUSTOMER	
ltr	ecm no.	dr	date	linear	0.X ±0.5	COPY	www.fciconnect.com
A				linear	0.XX ±0.25	projection	10P + 24S
				angles	0.XXX ±0.1		R/A SOLDER RECEPTACLE
				dr	0° ±2°	MM	product family PwrBlade
				engr	Warren Du 04/30/10	scale	size
				chr	Warren Du 04/30/10	1:1	dwg no
				appd	PM ZHENG 04/30/10		51772-019
sheet index	revision sheet			appd	Joseph Hsia 04/30/10		code
							213 sheet 3 of 4
							cage code 22526

Tous droits strictement réservés. Reproduction ou communication à des tiers interdite sous quelque forme que ce soit sans autorisation écrite du propriétaire. Propriété de FCI. Droits de reproduction FCI.

All rights strictly reserved. Reproduction or issue to third parties in any form whatever is not permitted without written authority from the proprietor. Property of FCI. Copyright FCI.

PRODUCT NUMBER
51772-019_
NOTE 3

NOTES:

1. DIMENSIONS AND TOLERANCES ARE IN ACCORDANCE WITH ASME Y14.5M, 1994 UNLESS OTHERWISE SPECIFIED.

CONNECTOR NOTES:

- 2. HOUSING MATERIAL: UL 94 V-0 GLASS FILLED HIGH-TEMP THERMOPLASTIC
POWER CONTACT MATERIAL: COPPER ALLOY
SIGNAL PIN MATERIAL: COPPER ALLOY
- 3. SEE ITEM 5 & 6 IN PRINT 10064183 FOR PLATING SPEC OF 51772-019 AND 51772-019LF RESPECTIVELY.
- 4. MANUFACTURER'S NAME, DATE CODE AND OPTIONAL P/N TO APPEAR ON THIS SURFACE. THE P/N CAN BE OMITTED IF THERE IS NOT ENOUGH SPACE ON THIS SURFACE.
- 5. PRODUCT SPECIFICATION GS-12-149.
APPLICATION SPECIFICATION BUS-20-067.
- 6. PACKAGED IN TRAYS.

PCB NOTES:

- 7. ALL HOLE DIAMETERS ARE FINISHED HOLE SIZE.
- 8. MOUNTING HOLES, WHERE APPLICABLE, ARE UNPLATED.
- 9. $\phi 1.151 \pm 0.025$ DRILLED HOLES PLATED WITH 0.008 MIN SnPb OR Sn OVER 0.03 TO 0.08 Cu PLATING TO ACHIEVE $\phi 1.02 \pm .07$ HOLE.
- 10. "DIM XXX" TO BE DETERMINED BY THE CUSTOMER.
- 11. CONNECTOR KEEP-OUT ZONE.
- 12. THE VOID CORING IN BETWEEN POWER MODULES, SIGNAL MODULES AND END MODULES ARE OPTIONAL AND THE SHAPE MAY BE DIFFERENT FOR OPTIMIZE THE MOLDING PROCESS. THE VOID CORING WILL NOT EFFECT TO PRODUCT FUNCTION.

mat'l code		SEE NOTE 2		tolerances unless otherwise specified		CUSTOMER		FCI		www.fciconnect.com	
ltr	ecm no.	dr	date	linear	0.X ± 0.5	COPY		projection		title	
A					0.XX ± 0.25					10P + 24S R/A SOLDER RECEPTACLE	
				angles	0° ± 2°					product family PwrBlade code	
		dr	Warren Du	04/30/10		scale		size		213 sheet	
		enr	Warren Du	04/30/10		1:1		dwg no		4 of 4	
		chr	PM ZHENG	04/30/10				A		51772-019	
		oppd	Joseph Hsiao	04/30/10						cage code	
sheet index	revision sheet									22526	