

Excellent Integrated System Limited

Stocking Distributor

Click to view price, real time Inventory, Delivery & Lifecycle Information:

[FCI](#)

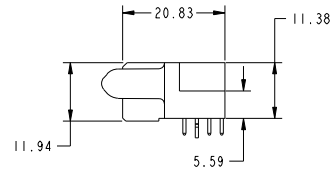
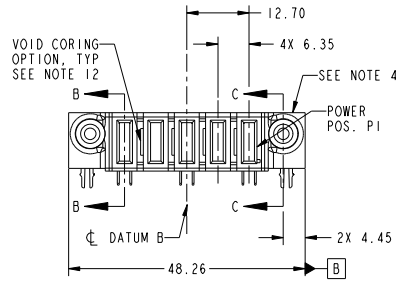
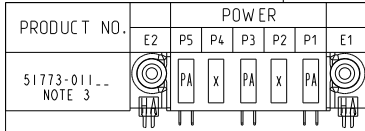
[51773-011LF](#)

For any questions, you can email us directly:

sales@integrated-circuit.com

Tous droits strictement réservés. Reproduction ou communication à des tiers interdite sous quelque forme que ce soit sans autorisation écrite du propriétaire. Propriété de E.F.C.I. Droits de reproduction F.C.I.

All rights strictly reserved. Reproduction or issue to third parties in any form whatever is not permitted without written authority from the proprietor. Property of F.C.I. Copyright F.C.I.



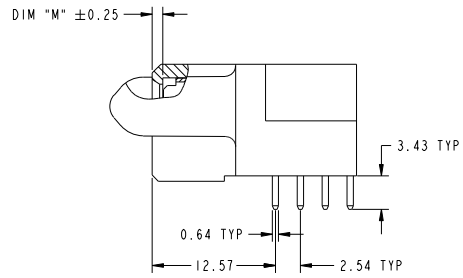
CODE	DIM "M" MATING LENGTH	CONTACT TYPE
PA	[1.07]	POWER
HA	[N/A]	HOLD-DOWN
X	OMITTED	OMITTED

mat'l code				SEE NOTE 2		tolerances unless otherwise specified		CUSTOMER		FCI	
ltr	ecm no.	dr	date	linear	0.X ± 0.5	COPY		www.fciconnect.com		title	
A	DG10-0446	X0	12/11/10		0.XX ± 0.25	projection		SP		R/A SOLDER RECEPTACLE	
				angles	0.XXX ± 0.1	MM		product family		PwrBlade	
				dr	0° ± 2°	scale		size		dwg no	
				enrg	X0 Wang 12/04/10	1:1		A		51773-011	
				chr	JEROME CHEN 12/04/10					213	
				oppd	PW ZHENG 12/04/10					sheet	
					JOSEPH HSIA 12/04/10					1 of 4	
sheet index	revision sheet	A 1	A 2	A 3	A 4					cage code	
										22526	

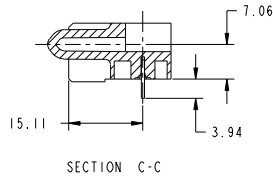
Tous droits strictement réservés. Reproduction ou communication à des tiers interdite sous quelque forme que ce soit sans autorisation écrite du propriétaire. Propriété de FCI. Droits de reproduction FCI.

All rights strictly reserved. Reproduction or issue to third parties in any form whatever is not permitted without written authority from the proprietor. Property of FCI. Copyright FCI.

PRODUCT NUMBER
51773-011...
NOTE 3



BROKEN-OUT SECTION B-B
SCALE 2:1



mat'l code		SEE NOTE 2		tolerances unless otherwise specified		CUSTOMER		FCI	
ltr	ecm no.	dr	date	linear	0.X ±0.5	COPY		www.fciconnect.com	
A					0.XX ±0.25	projection	title		
				angles	0.XXX ±0.1			SP	
				dr	0° ±2°			R/A SOLDER RECEPTACLE	
				engr	XQ Wang 12/04/10	scale	product family	PwrBlade	code
				chr	JEROME CHEN 12/04/10	1:1	size	dwg no	213
				oppd	PM ZHENG 12/04/10		A	51773-011	sheet
sheet index	revision sheet				JOSEPH HSIA 12/04/10				2 of 4

Pro/E

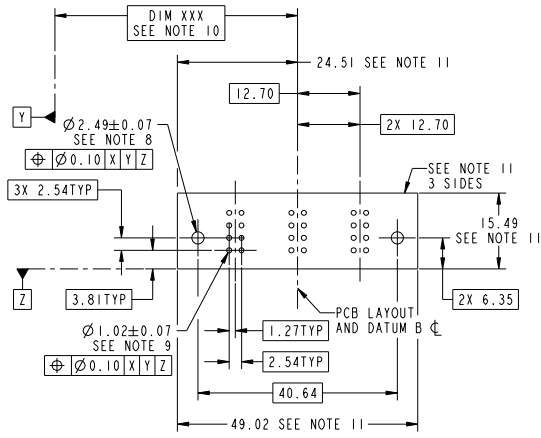
cage code 22526

Tous droits strictement réservés. Reproduction ou communication à des tiers interdite sous quelque forme que ce soit sans autorisation écrite du propriétaire. Propriété de FCI. Droits de reproduction FCI.



All rights strictly reserved. Reproduction or issue to third parties in any form whatever is not permitted without written authority from the proprietor. Property of FCI. Copyright FCI.

PRODUCT NUMBER
51773-011...
NOTE 3



RECOMMENDED PCB LAYOUT

mat'l code		SEE NOTE		tolerances unless otherwise specified		CUSTOMER	
ltr	ecm no.	dr	date	linear	0.X ±0.5	COPY	www.fciconnect.com
A				linear	0.XX ±0.25	projection	title
				angles	0.XXX ±0.1		R/A SOLDER RECEPTACLE
				dr	0° ±2°	MM	product family
				enr	XQ Wang 12/04/10	scale	PwrBlade
				chr	JEROME CHEN 12/04/10	1:1	code
				oppd	PN ZHENG 12/04/10		213
					JOSEPH HSIA 12/04/10		sheet
sheet index	revision sheet						3 of 4

Pro/E

cage code 22526

PDM: Rev:A

STATUS: Released

Printed: Dec 20, 2010

Tous droits strictement réservés. Reproduction ou communication à des tiers interdite sous quelque forme que ce soit sans autorisation écrite du propriétaire. Propriété de FCI. Droits de reproduction FCI.

All rights strictly reserved. Reproduction or issue to third parties in any form whatever is not permitted without written authority from the proprietor. Property of FCI. Copyright FCI.

PRODUCT NUMBER
51773-011LF
NOTE 3

NOTES:

1. DIMENSIONS AND TOLERANCES ARE IN ACCORDANCE WITH ASME Y14.5M, 1994 UNLESS OTHERWISE SPECIFIED.

CONNECTOR NOTES:

- 2. HOUSING MATERIAL: UL 94 V-0 GLASS FILLED HIGH-TEMP THERMOPLASTIC
POWER CONTACT MATERIAL: COPPER ALLOY
SIGNAL PIN MATERIAL: COPPER ALLOY
- 3. SEE ITEM 5 & 6 IN PRINT 10064183 FOR PLATING SPEC OF 51773-011 AND 51773-011LF RESPECTIVELY.
- 4. MANUFACTURER'S NAME, DATE CODE AND OPTIONAL P/N TO APPEAR ON THIS SURFACE. THE P/N CAN BE OMITTED IF THERE IS NOT ENOUGH SPACE ON THIS SURFACE.
- 5. PRODUCT SPECIFICATION GS-12-149.
APPLICATION SPECIFICATION BUS-20-067.
- 6. PACKAGED IN TRAYS.

PCB NOTES:

- 7. ALL HOLE DIAMETERS ARE FINISHED HOLE SIZE.
- 8. MOUNTING HOLES, WHERE APPLICABLE, ARE UNPLATED.
- 9. $\phi 1.151 \pm 0.025$ DRILLED HOLES PLATED WITH 0.008 MIN SnPb OR Sn OVER 0.03 TO 0.08 Cu PLATING TO ACHIEVE $\phi 1.02 \pm .07$ HOLE.
- 10. "DIM XXX" TO BE DETERMINED BY THE CUSTOMER.
- 11. CONNECTOR KEEP-OUT ZONE.
- 12. THE VOID CORING IN BETWEEN POWER MODULES, SIGNAL MODULES AND END MODULES ARE OPTIONAL AND THE SHAPE MAY BE DIFFERENT FOR OPTIMIZE THE MOLDING PROCESS. THE VOID CORING WILL NOT EFFECT TO PRODUCT FUNCTION.

mat'l code				SEE NOTE 2				tolerances unless otherwise specified				CUSTOMER				FCI			
lfr		ecm no.		dr		date		linear		0.X ± 0.5		projection		COPY		www.fciconnect.com			
A										0.XX ± 0.25		MM		title		SP			
								angles		0° ± 2°		MM		R/A SOLDER RECEPTACLE					
				dr		XQ Wang		12/04/10		scale		1:1		product family		PwrBlade			
				engr		JEROME CHEN		12/04/10		size		A		dwg no		51773-011			
				chr		PW ZHENG		12/04/10		code		213		sheet		4 of 4			
				oppd		JOSEPH HSIA		12/04/10		cage code		22526							
sheet index		revision sheet																	