

Excellent Integrated System Limited

Stocking Distributor

Click to view price, real time Inventory, Delivery & Lifecycle Information:

[FCI](#)
[51939-705LF](#)

For any questions, you can email us directly:
sales@integrated-circuit.com

PRODUCT NO. 51939-705... NOTE 3	ROWS D C B A	<table border="1" style="width:100%; border-collapse: collapse;"> <tr> <th colspan="2">POWER</th> <th colspan="8">SIGNAL</th> </tr> <tr> <td>E1</td> <td>P1</td> <td>P2</td> <td>1</td> <td>2</td> <td>3</td> <td>4</td> <td>5</td> <td>6</td> <td>7</td> <td>8</td> <td>9</td> <td>10</td> <td>E2</td> </tr> </table>	POWER		SIGNAL								E1	P1	P2	1	2	3	4	5	6	7	8	9	10	E2					
POWER		SIGNAL																													
E1	P1	P2	1	2	3	4	5	6	7	8	9	10	E2																		
												<table border="1" style="width:100%; border-collapse: collapse;"> <thead> <tr> <th>CODE</th> <th>DIM "M" MATING LENGTH</th> <th>CONTACT TYPE</th> </tr> </thead> <tbody> <tr> <td>U</td> <td>[6.86]</td> <td>SIGNAL</td> </tr> <tr> <td>T</td> <td>[6.86]</td> <td>SIGNAL</td> </tr> <tr> <td>S</td> <td>[6.86]</td> <td>SIGNAL</td> </tr> <tr> <td>R</td> <td>[6.86]</td> <td>SIGNAL</td> </tr> <tr> <td>PA</td> <td>[N/A]</td> <td>POWER</td> </tr> </tbody> </table>		CODE	DIM "M" MATING LENGTH	CONTACT TYPE	U	[6.86]	SIGNAL	T	[6.86]	SIGNAL	S	[6.86]	SIGNAL	R	[6.86]	SIGNAL	PA	[N/A]	POWER
CODE	DIM "M" MATING LENGTH	CONTACT TYPE																													
U	[6.86]	SIGNAL																													
T	[6.86]	SIGNAL																													
S	[6.86]	SIGNAL																													
R	[6.86]	SIGNAL																													
PA	[N/A]	POWER																													
spec ref *		dr		Luo Weller	2012/09/05	projection		MM		size		scale																			
tolerance std		eng		Luo Weller	2012/09/17					A4		1:1																			
SEE NOTE		chr		-	-			product family		PwrBlade		ecn no		-																	
surface		appr		Pei-Ming Zheng	2012/09/17	rel level		Released		rev		A																			
<table border="1" style="width:100%; border-collapse: collapse;"> <tr> <th rowspan="3">linear</th> <td>0.X</td> <td>±0.5</td> </tr> <tr> <td>0.XX</td> <td>±0.25</td> </tr> <tr> <td>0.XXX</td> <td>±0.1</td> </tr> <tr> <th>angular</th> <td>0°</td> <td>±2°</td> </tr> </table>		linear	0.X	±0.5	0.XX	±0.25	0.XXX	±0.1	angular	0°	±2°			2DCP + 40S RIGHT ANGLE SOLDER HEADER		www.fci.com		cat. no. -		Product - Customer Drw		sheet 1 of 4									
linear	0.X		±0.5																												
	0.XX		±0.25																												
	0.XXX	±0.1																													
angular	0°	±2°																													

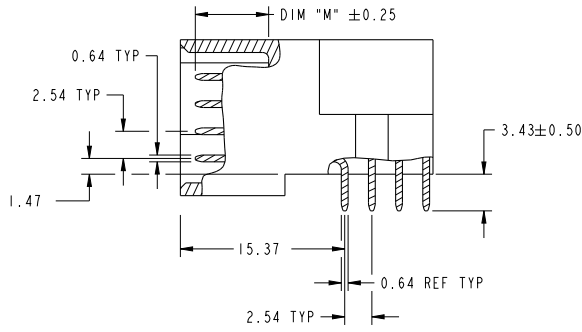


Copyright FCI.

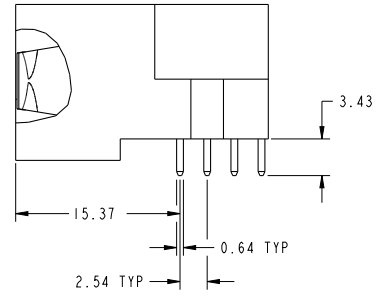
Print File - REV C - 2009-08-09

PRODUCT NUMBER

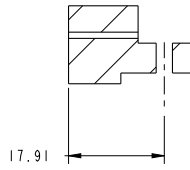
51939-705LF
NOTE: 3



BROKEN-OUT SECTION A-A
SCALE 2:1



SECTION B-B
SCALE 2:1



SECTION C-C

dr	Luo Weller	2012/09/05	projection	MM	size	A4	scale	1:1
eng	Luo Weller	2012/09/17			ecn no	-	rel level	
chr	-	-			product family	PwrBlade	Released	
appr	Pei-Ming Zheng	2012/09/17				dwg no	51939-705	rev
www.fci.com			title 2DCP + 40S RIGHT ANGLE SOLDER HEADER			cat. no. -		Product - Customer Drw
							sheet 2 of 4	

Print File - REV C - 2009-08-09

PDS: Rev :A

STATUS:Released

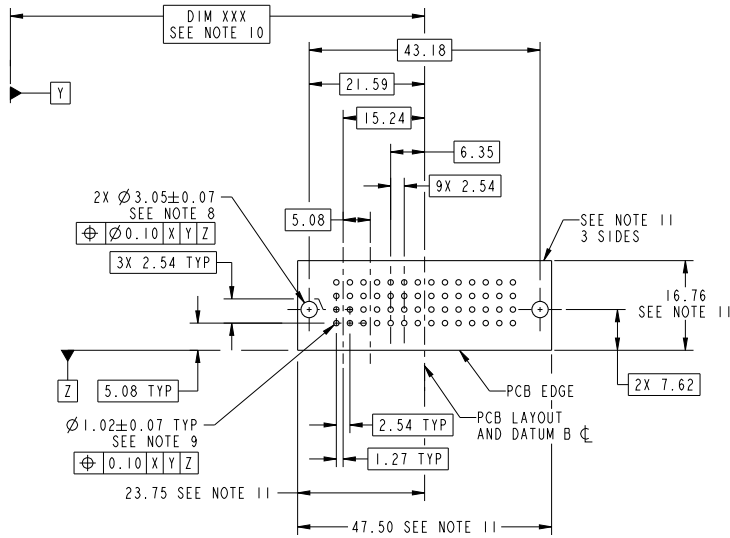
Printed: Sep 17, 2012



Copyright FCI.

PRODUCT NUMBER

51939-705...
NOTE: 3



RECOMMENDED PCB LAYOUT

dr	Luo Weller	2012/09/05	projection	MM	size	A4	scale	1:1
eng	Luo Weller	2012/09/17			ecn no	-	rel level	
chr	-	-			product family	PwrBlade	Released	
appr	Pei-Ming Zheng	2012/09/17				2DCP + 40S	dwg no	51939-705
www.fci.com			RIGHT ANGLE SOLDER HEADER			rev	A	
cat. no.			-			Product - Customer Drw		sheet 3 of 4

Print File - REV C - 2009-08-09

1

2

3

PDS: Rev :A

STATUS:Released

Printed: Sep 17, 2012

Copyright FCI.

D

A

B

C

D

A

B

C

D

PRODUCT NUMBER
51939-705_..
NOTE: 3

NOTES:

1. DIMENSIONS AND TOLERANCES ARE IN ACCORDANCE WITH ASME Y14.5M, 1994 UNLESS OTHERWISE SPECIFIED.

CONNECTOR NOTES:

2. HOUSING MATERIAL: UL 94 V-0 GLASS FILLED HIGH-TEMP THERMOPLASTIC
POWER CONTACT MATERIAL: COPPER ALLOY
SIGNAL PIN MATERIAL: COPPER ALLOY
3. SEE ITEM 1 & 2 IN PRINT 10064183 FOR PLATING SPEC OF 51939-705 AND 51939-705LF RESPECTIVELY.

4. MANUFACTURER'S NAME, DATE CODE AND OPTIONAL P/N TO APPEAR ON THIS SURFACE. THE P/N CAN BE OMITTED IF THERE IS NOT ENOUGH SPACE ON THIS SURFACE.

5. PRODUCT SPECIFICATION GS-12-149.
APPLICATION SPECIFICATION BUS-20-067.

6. PACKAGED IN TRAYS.

PCB NOTES:

7. ALL HOLE DIAMETERS ARE FINISHED HOLE SIZE.

8. MOUNTING HOLES, WHERE APPLICABLE, ARE UNPLATED.

9. $\varnothing 1.151 \pm 0.025$ DRILLED HOLES PLATED WITH 0.008 MIN SnPb OR Sn OVER 0.03 TO 0.08 Cu PLATING TO ACHIEVE $\varnothing 1.02 \pm 0.07$ HOLE.

10. "DIM XXX" TO BE DETERMINED BY THE CUSTOMER.

11. CONNECTOR KEEP-OUT ZONE.

dr	Luo Weller	2012/09/05	projection	MM	size	A4	scale	1:1
eng	Luo Weller	2012/09/17			ecn no	-		
chr	-	-	product family	PwrBlade	rel level	Released		
appr	Pei-Ming Zheng	2012/09/17			title	2DCP + 40S		rev
www.fci.com					cat. no.	-	Product - Customer Drw	sheet 4 of 4
					dwg no	51939-705		A

Print File - REV C - 2009-08-09



Copyright FCI.