

## Excellent Integrated System Limited

Stocking Distributor

Click to view price, real time Inventory, Delivery & Lifecycle Information:

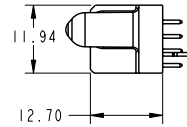
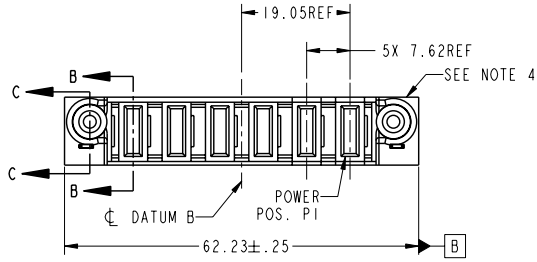
[FCI](#)  
[51940-194LF](#)

For any questions, you can email us directly:  
[sales@integrated-circuit.com](mailto:sales@integrated-circuit.com)

Tous droits strictement réservés. Reproduction ou communication o des tiers interdite sous quelque forme que ce soit sans autorisation écrite du propriétaire. Propriété de c FCI. Droits de reproduction FCI.

All rights strictly reserved. Reproduction or issue to third parties in any form whatever is not permitted without written authority from the proprietor. Property of FCI. Copyright FCI.

PRODUCT NO. 51940-194-- NOTE: 3	POWER							E1
	E2	P6	P5	P4	P3	P2	P1	



CODE	DIM "M" MATING LENGTH	CONTACT TYPE
PA	[1.07]	POWER
PD	[2.34]	POWER
HA	[N/A]	HOLD-DOWN

mal't code				SEE NOTE		tolerances unless otherwise specified		CUSTOMER		CONFIDENTIAL	
lir	ecm no.	dr	date	linear	0.X ± 0.3	angles	0° ± 2°	COPY	www.fciconnect.com	title	
A	DG06-0317	JMG	07/28/06		0.XX ± 0.10	dr	JM GUO 07/28/06	projection		6ACP	VERTICAL SOLDER RECEPT
					0.XXX ± 0.050	enrg	SALLY LUO 07/28/06	MM		product family	
						chr	BEER FU 07/28/06	scale	1:1	size	code
						appd	JOSEPH HSIA 07/28/06			dwg no	213
sheet index	revision sheet	1	2	3	4					A	51940-194
											1 of 4
											code code
											22526

Pro/E

**PDM: Rev:A**

**STATUS: Released**

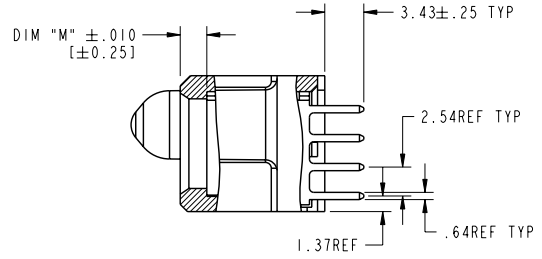
Printed: Dec 20, 2010

Tous droits strictement réservés. Reproduction ou communication o des tiers interdite sous quelque forme que ce soit sans autorisation écrite du propriétaire. Propriété de c FCI. Droits de reproduction FCI.

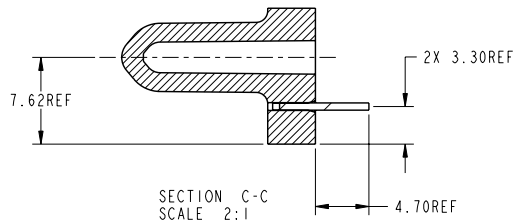


All rights strictly reserved. Reproduction or issue to third parties in any form whatever is not permitted without written authority from the proprietor. Property of FCI. Copyright FCI.

PRODUCT NUMBER  
51940-194...  
NOTE: 3



SECTION B-B  
SCALE 2:1



SECTION C-C  
SCALE 2:1

**CONFIDENTIAL**

mat'l code		SEE NOTE		tolerances unless otherwise specified		CUSTOMER		FCI	
lfr	ecn no.	dr	date	linear	0.X ±0.3	COPY	www.fciconnect.com		
A					0.XX ±0.10	projection	title 6ACP		
				angles	0.XXX ±0.050	MM	VERTICAL SOLDER RECEPT		
				dr	0° ±2°	scale	product family	PwrBlade	code
				enr	JM GUO 07/28/06	1:1	size	dwg no	213
				chr	SALLY LUO 07/28/06		A	51940-194	sheet
				appd	BEER FU 07/28/06				2 of 4
					JOSEPH HSIA 07/28/06				
sheet index	revision sheet								

Pro/E

cage code 22526

**PDM: Rev:A**

STATUS: **Released**

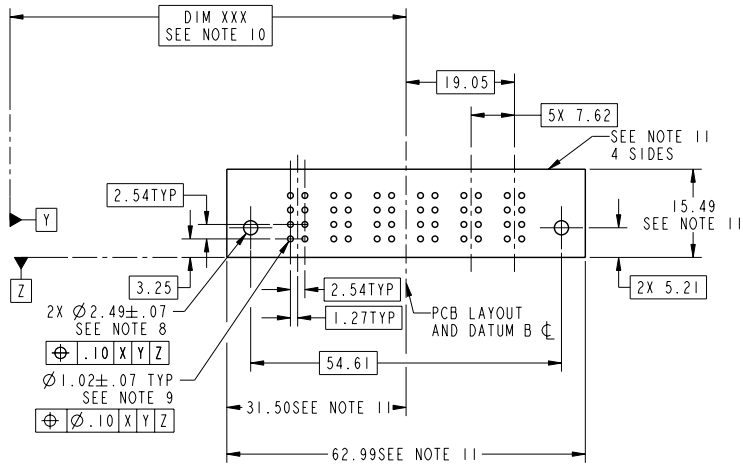
Printed: Dec 20, 2010

Tous droits strictement réservés. Reproduction ou communication o des tiers interdite sous quelque forme que ce soit sans autorisation écrite du propriétaire. Propriété de c FCI. Droits de reproduction FCI.



All rights strictly reserved. Reproduction or issue to third parties in any form whatever is not permitted without written authority from the proprietor. Property of FCI. Copyright FCI.

PRODUCT NUMBER  
51940-194...  
NOTE: 3



CONFIDENTIAL

mat'l code		SEE NOTE		tolerances unless otherwise specified		CUSTOMER	
lir	ecn no.	dr	date	linear	0.X ±0.3	COPY	www.fciconnect.com
A					0.XX ±0.10	projection	6ACP
				angles	0.XXX ±0.050		VERTICAL SOLDER RECEPT
				dr	0° ±2°	MM	product family PwrBlade
				enr	JM GUO 07/28/06	scale	code 213
				chr	SALLY LUO 07/28/06	1:1	size dwg no 51940-194
				appd	BEER FU 07/28/06	A	sheet 3 of 4
					JOSEPH HSIA 07/28/06		
sheet index	revision sheet						cage code 22526

Pro/E

PDM: Rev:A

STATUS: Released

Printed: Dec 20, 2010

Tous droits strictement réservés. Reproduction ou communication o des tiers interdite sous quelque forme que ce soit sans autorisation écrite du propriétaire. Propriété de c FCI. Droits de reproduction FCI.

All rights strictly reserved. Reproduction or issue to third parties in any form whatever is not permitted without written authority from the proprietor. Property of FCI. Copyright FCI.

**PRODUCT NUMBER**  
51940-194-  
NOTE: 3

**NOTES:**

1. DIMENSIONS AND TOLERANCES ARE IN ACCORDANCE WITH ASME Y14.5M, 1994 UNLESS OTHERWISE SPECIFIED.

**CONNECTOR NOTES:**

- ② HOUSING MATERIAL: UL 94 V-0 GLASS FILLED HIGH-TEMP THERMOPLASTIC  
POWER CONTACT MATERIAL: COPPER ALLOY  
SIGNAL PIN MATERIAL: COPPER ALLOY
  - 3. 51940-194;51940-194LF;51940-194GLF PLATING SPEC. SEE PRINT:10064183
  - ④ MANUFACTURER'S NAME, P/N, AND DATE CODE TO APPEAR ON THIS SURFACE.
  - 5. PRODUCT SPECIFICATION GS-12-149.  
APPLICATION SPECIFICATION BUS-20-067.
  - 6. PACKAGED IN TRAYS.
- PCB NOTES:**
- 7. ALL HOLE DIAMETERS ARE FINISHED HOLE SIZE.
  - ⑧ MOUNTING HOLES, WHERE APPLICABLE, ARE UNPLATED.
  - ⑨  $\varnothing 1.151 \pm 0.025$  DRILLED HOLES PLATED WITH 0.008 MIN SnPb OVER 0.03 TO 0.08 Cu PLATING TO ACHIEVE  $\varnothing 1.02 \pm .07$  HOLE.
  - ⑩ "DIM XXX" TO BE DETERMINED BY THE CUSTOMER.
  - ⑪ CONNECTOR KEEP-OUT ZONE.

**CONFIDENTIAL**

mat'l code		SEE NOTE		tolerances unless otherwise specified		CUSTOMER		FCI	
lir	ecn no.	dr	date	linear	0.X ± 0.3	COPY	www.fciconnect.com		
A					0.XX ± 0.10	projection	title 6ACP		
				angles	0.XXX ± 0.050		VERTICAL SOLDER RECEPT		
				dr	0° ± 2°	MM	product family	PwrBlade	code
				engr	JM GUO 07/28/06	scale	size	dwg no	213
				chr	SALLY LUO 07/28/06	1:1	A	51940-194	sheet
				appd	BEER FU 07/28/06				4 of 4
					JOSEPH HSIA 07/28/06				
sheet index	revision sheet								

Pro/E 3 cage code 22526 4