

## Excellent Integrated System Limited

Stocking Distributor

Click to view price, real time Inventory, Delivery & Lifecycle Information:

[FCI](#)

[51940-248LF](#)

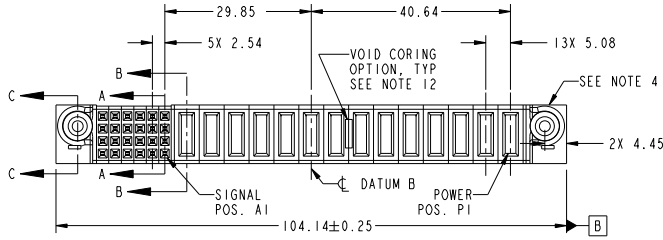
For any questions, you can email us directly:

[sales@integrated-circuit.com](mailto:sales@integrated-circuit.com)

Tous droits strictement réservés. Reproduction ou communication à des tiers interdite sous quelque forme que ce soit sans autorisation écrite du propriétaire. Property of FCI. Droits de reproduction FCI.

All rights strictly reserved. Reproduction or issue to third parties in any form whatever is not permitted without written authority from the proprietor. Property of FCI. Copyright FCI.

PRODUCT NO.	ROWS	SIGNAL				POWER																E1
		E2	4	3	2	P14	P13	P12	P11	P10	P9	P8	P7	P6	P5	P4	P3	P2	P1			
51940-248.. NOTE: 3	D B A																					



CODE	DIM "M" MATING LENGTH	CONTACT TYPE
PC	[1.07]	POWER
F	[N/A]	SIGNAL

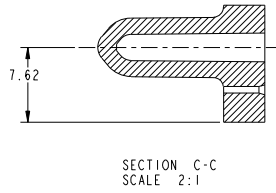
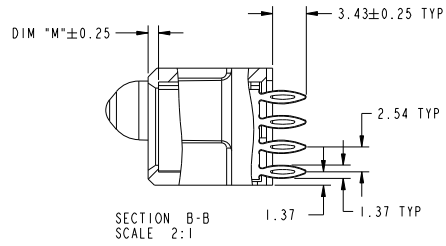
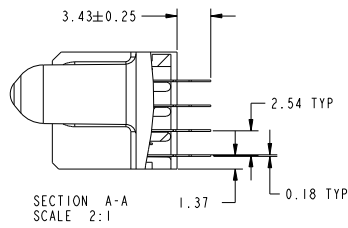
SEE NOTES				tolerances unless otherwise specified		CUSTOMER	
ltr	ecm no.	dr	date	0.X ±0.5	projection	www.fciconnect.com	
A	DG08-0097	JMG	03/14/08	0.XX ±0.25		title	
				0.XXX ±0.1		14P + 24S	
				0° ±2°		VERTICAL PRESS-FIT RECEPT	
				angles		product family	
				dr JM GUO 03/14/08	MM	PwrBlade	
				enr JEROME CHEN 03/14/08	scale	code	
				chr Gary Hsieh 03/14/08	1:1	213	
				oppd Joseph Hsiao 03/14/08		sheet	
sheet index	revision sheet	A 1	A 2	A 3		1 of 4	
						cage code	
						22526	

Tous droits strictement réservés. Reproduction ou communication à des tiers interdite sous quelque forme que ce soit sans autorisation écrite du propriétaire. Propriété de FCI. Droits de reproduction FCI.

All rights strictly reserved. Reproduction or issue to third parties in any form whatever is not permitted without written authority from the proprietor. Property of FCI. Copyright FCI.



PRODUCT NUMBER  
51940-248-  
NOTE: 3



mat'l code				tolerances unless otherwise specified		CUSTOMER		FCI	
ltr	ecm no.	dr	date	linear	0.X ±0.5	COPY	www.fciconnect.com		
A					0.XX ±0.25	projection	title 14P + 24S		
				angles	0.XXX ±0.1		VERTICAL PRESS-FIT RECEPT		
				dr	0° ±2°	MM	product family	PwrBlade	code
				engr	JM GUO 03/14/08	scale	size	dwg no	213
				chr	JEROME CHEN 03/14/08	1:1	A	51940-248	sheet
				oppd	Gary Hsieh 03/14/08				2 of 4
					Joseph Hsia 03/14/08				
sheet index	revision sheet								

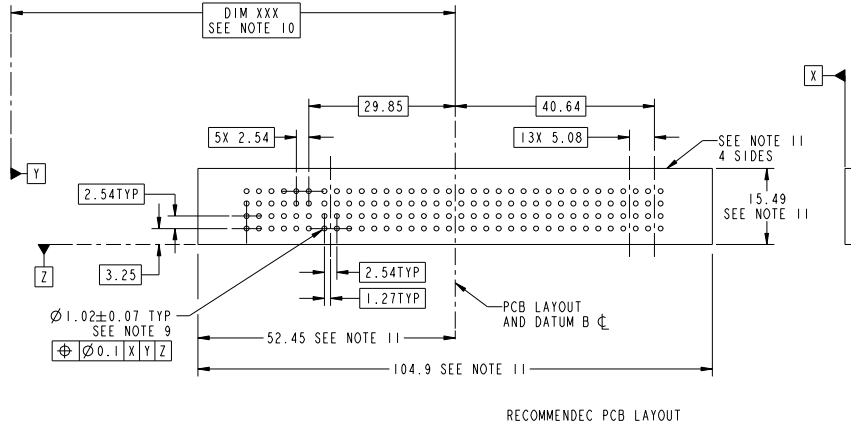
Pro/E

cage code 22526

Tous droits strictement réservés. Reproduction ou communication à des tiers interdite sous quelque forme que ce soit sans autorisation écrite du propriétaire. Property of FCI. Droits de reproduction FCI.

All rights strictly reserved. Reproduction or issue to third parties in any form whatever is not permitted without written authority from the proprietor. Property of FCI. Copyright FCI.

PRODUCT NUMBER  
51940-248...  
NOTE: 3



mat'l code				tolerances unless otherwise specified		CUSTOMER	
ltr	ecm no.	dr	date	linear	0.X ±0.5	COPY	www.fciconnect.com
A					0.XX ±0.25	projection	title
				angles	0.XXX ±0.1		14P + 24S
				dr	0° ±2°	MM	VERTICAL PRESS-FIT RECEIPT
				engr	JM GUO 03/14/08	product family	PwrBlade
				chr	JEROME CHEN 03/14/08	size	code
				appd	Gary Hsieh 03/14/08	scale	213
					Joseph Hsiao 03/14/08	1:1	sheet
sheet index	revision sheet						3 of 4
							code
							22526

Tous droits strictement réservés. Reproduction ou communication à des tiers interdite sous quelque forme que ce soit sans autorisation écrite du propriétaire. Propriété de FCI. Droits de reproduction FCI.

All rights strictly reserved. Reproduction or issue to third parties in any form whatever is not permitted without written authority from the proprietor. Property of FCI. Copyright FCI.



**PRODUCT NUMBER**  
 51940-248-  
 NOTE: 3

**NOTES:**

1. DIMENSIONS AND TOLERANCES ARE IN ACCORDANCE WITH ASME Y14.5M, 1994 UNLESS OTHERWISE SPECIFIED.
- CONNECTOR NOTES:
- ② HOUSING MATERIAL: UL 94 V-0 GLASS FILLED HIGH-TEMP THERMOPLASTIC  
 POWER CONTACT MATERIAL: COPPER ALLOY  
 SIGNAL PIN MATERIAL: COPPER ALLOY
3. PLATING SPEC.  
 51940-248, 51940-248LF PLATING SPEC. WAS SHOWN IN THE PRINT OF 10064183.
- ④ MANUFACTURER'S NAME, P/N, AND DATE CODE TO APPEAR ON THIS SURFACE.
5. PRODUCT SPECIFICATION GS-12-149.  
 APPLICATION SPECIFICATION BUS-20-067.
6. PACKAGED IN TRAYS.
- PCB NOTES:
7. ALL HOLE DIAMETERS ARE FINISHED HOLE SIZE.
- ⑧ MOUNTING HOLES, WHERE APPLICABLE, ARE UNPLATED.
- ⑨  $\varnothing 1.151 \pm 0.025$  DRILLED HOLES PLATED WITH 0.008 MIN SnPb OR Sn OVER 0.03 TO 0.08 Cu PLATING TO ACHIEVE  $\varnothing 1.02 \pm 0.07$  HOLE.
- ⑩ "DIM XXX" TO BE DETERMINED BY THE CUSTOMER.
- ⑪ CONNECTOR KEEP-OUT ZONE.
12. THE VOID CORING IN BETWEEN POWER MODULES, SIGNAL MODULES AND END MODULES ARE OPTIONAL AND THE SHAPE MAY BE DIFFERENT FOR OPTIMIZE THE MOLDING PROCESS. THE VOID CORING WILL NOT EFFECT TO PRODUCT FUNCTION.

mat'l code				tolerances unless otherwise specified		CUSTOMER		FCI	
ltr	ecm no.	dr	date	linear	0.X ± 0.5	COPY	www.fciconnect.com		
A					0.XX ± 0.25	projection	title		
				angles	0° ± 2°		14P + 24S		
				dr	JM GUO 03/14/08	MM	VERTICAL PRESS-FIT RECEPT		
				engr	JEROME CHEN 03/14/08	scale	product family	PwrBlade	code
				chr	Gary Hsieh 03/14/08	1:1	size	dwg no	213
				oppd	Joseph Hsieh 03/14/08		A	51940-248	sheet
sheet index	revision sheet								4 of 4

Pro/E

cage code 22526