

Excellent Integrated System Limited

Stocking Distributor

Click to view price, real time Inventory, Delivery & Lifecycle Information:

[FCI](#)

[51940-260LF](#)

For any questions, you can email us directly:

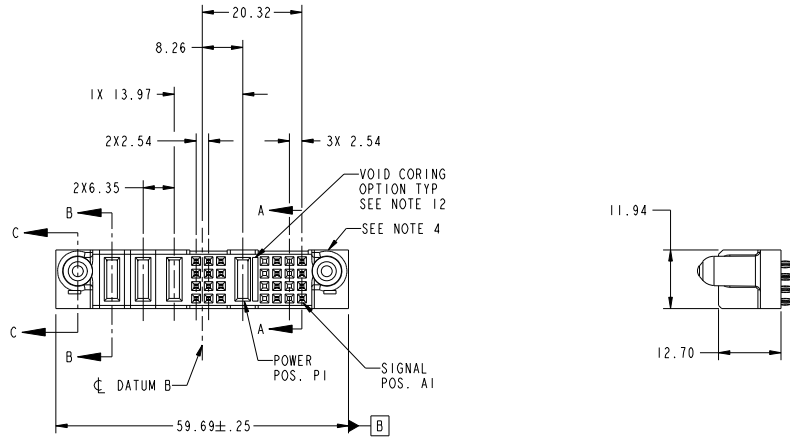
sales@integrated-circuit.com

Tous droits strictement réservés. Reproduction ou communication à des tiers interdite sous quelque forme que ce soit sans autorisation écrite du propriétaire. Property of FCI. Copyright FCI. Droits de reproduction FCI.



All rights strictly reserved. Reproduction or issue to third parties in any form whatever is not permitted without written authority from the proprietor. Property of FCI. Copyright FCI.

PRODUCT NO.	ROWS	1 2																								
		POWER				SIG				PWR				SIG												
51940-260- NOTE 3	ABCD A	E2	P4	P3	P2	1	6	5	P1	4	3	2	1	E1												



CODE	DIM "M" MATING LENGTH	CONTACT TYPE
PC	1.07	POWER
F	N/A	SIGNAL
PF	2.34	POWER
X	OMITTED	

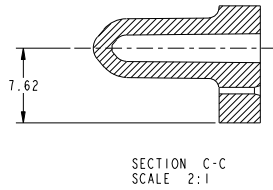
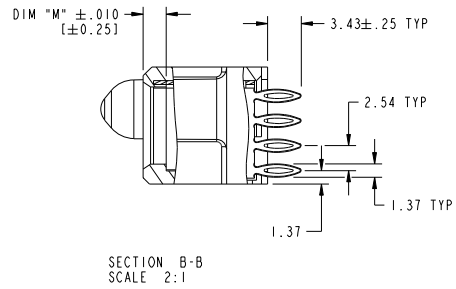
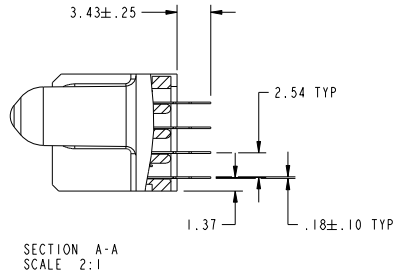
mat'l code				tolerances unless otherwise specified		CUSTOMER	
ltr	ecm no.	dr	date	0.X	±0.5	www.fciconnect.com	
A	DG08-0199	SH	07/31/08	0.XX	±0.25	16S+1P+12S+3P VERTICAL PF RECEPT	
				0.XXX	±0.1	product family PwrBlade code 213	
				angles	0° ±2°	size A 51940-260 sheet 1 of 4	
		dr	Sincere He	07/23/08	scale 1:1		
		enr	Sincere He	07/23/08			
		chr	Gary Hsieh	07/23/08			
		oppd	Joseph Hsiao	07/23/08			
sheet index	revision sheet	A 1	A 2	A 3	A 4	cage code 22526	

Tous droits strictement réservés. Reproduction ou communication a des tiers interdite sous quelque forme que ce soit sans autorisation écrite du propriétaire. Propriété de FCI. Droits de reproduction FCI.

All rights strictly reserved. Reproduction or issue to third parties in any form whatever is not permitted without written authority from the proprietor. Property of FCI. Copyright FCI.



PRODUCT NUMBER
51940-260...
NOTE 3



mat'l code				tolerances unless otherwise specified			CUSTOMER		FCI	
ltr	ecm no.	dr	date	linear	0.X ±0.5	COPY	www.fciconnect.com			
A					0.XX ±0.25	projection	title		16S+1P+12S +3P	
				angles	0.XXX ±0.1		VERTICAL PF RECEPT			
				dr	0° ±2°	MM	product family	PwrBlade	code	213
				enr	Sincere He 07/23/08	scale	size	dwg no	51940-260	sheet
				chr	Sincere He 07/23/08	1:1	A			2 of 4
				oppd	Gary Hsieh 07/23/08					
					Joseph Hsia 07/23/08					
sheet index	revision sheet								cage code	22526

Pro/E

PDM: Rev:A

STATUS: Released

Printed: Dec 20, 2010

Tous droits strictement réservés. Reproduction ou communication à des tiers interdite sous quelque forme que ce soit sans autorisation écrite du propriétaire. Propriété de FCI. Droits de reproduction FCI.

All rights strictly reserved. Reproduction or issue to third parties in any form whatever is not permitted without written authority from the proprietor. Property of FCI. Copyright FCI.

PRODUCT NUMBER
51940-260..
NOTE 3

NOTES:

1. DIMENSIONS AND TOLERANCES ARE IN ACCORDANCE WITH ASME Y14.5M, 1994 UNLESS OTHERWISE SPECIFIED.

CONNECTOR NOTES:

- ② HOUSING MATERIAL: UL 94 V-0 GLASS FILLED
HIGH-TEMP THERMOPLASTIC
POWER CONTACT MATERIAL: COPPER ALLOY
SIGNAL PIN MATERIAL: COPPER ALLOY
- 3. PLATING:
SEE PRINT 10064183 FOR PLATING SPEC OF 51940-260;51940-260LF
- ④ MANUFACTURER'S NAME, P/N, AND DATE CODE TO APPEAR ON THIS SURFACE.
- 5. PRODUCT SPECIFICATION GS-12-149.
APPLICATION SPECIFICATION BUS-20-067.
- 6. PACKAGED IN TRAYS.
- PCB NOTES:
- 7. ALL HOLE DIAMETERS ARE FINISHED HOLE SIZE.
- ⑧ MOUNTING HOLES, WHERE APPLICABLE, ARE UNPLATED.
- ⑨ $\varnothing 1.151 \pm 0.025$ DRILLED HOLES PLATED WITH
0.008 MIN SnPb OVER 0.03
TO 0.08 Cu PLATING TO ACHIEVE
 $\varnothing 1.02 \pm .07$ HOLE.
- ⑩ "DIM XXX" TO BE DETERMINED BY THE CUSTOMER.
- ⑪ CONNECTOR KEEP-OUT ZONE.
- 12. THE VOID CORING IN BETWEEN POWER MODULES, SIGNAL MODULES AND END MODULES ARE OPTIONAL AND THE SHAPE MAY BE DIFFERENT FOR OPTIMIZE THE MOLDING PROCESS, THE VOID CORING WILL NO EFFECT TO PRODUCT FUNCTION.

mat'l code				tolerances unless otherwise specified		CUSTOMER	
lfr	ecm no.	dr	date			COPY	www.fciconnect.com
A				linear	0.X ± 0.5	projection	title
					0.XX ± 0.25		16S+1P+12S +3P VERTICAL PF RECEPT
				angles	0° ± 2°		product family
				dr	Sincere He 07/23/08	MM	code
				engr	Sincere He 07/23/08	size	213
				chr	Gary Hsieh 07/23/08	scale	sheet
				appd	Joseph Hsia 07/23/08	1:1	4 of 4
sheet index	revision sheet						

Pro/E

cage code 22526