

Excellent Integrated System Limited

Stocking Distributor

Click to view price, real time Inventory, Delivery & Lifecycle Information:

[FCI](#)
[51940-263LF](#)

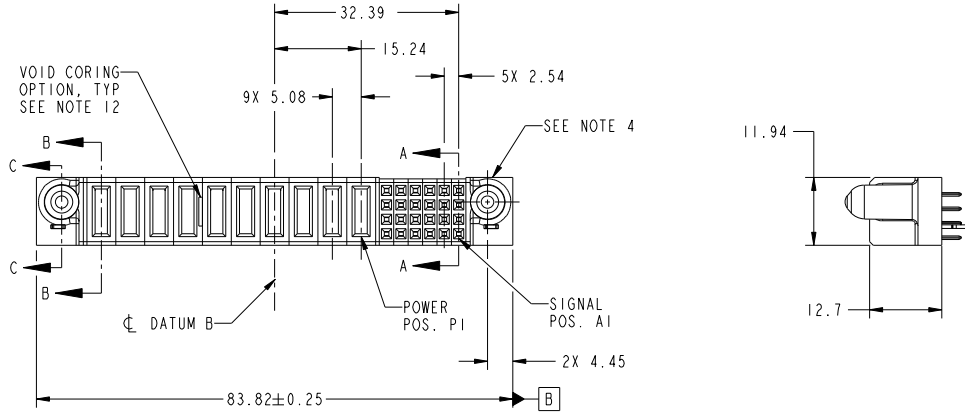
For any questions, you can email us directly:
sales@integrated-circuit.com

Tous droits strictement réservés. Reproduction ou communication à des tiers
interdite sous quelque forme que ce soit sans autorisation écrite du propriétaire.
Propriété de FCI. Droits de reproduction FCI.

All rights strictly reserved. Reproduction or issue to third parties in any
form whatever is not permitted without written authority from the proprietor.
Property of FCI. Copyright FCI.



PRODUCT NO.	ROWS	POWER										SIGNAL									
		E2	P10	P9	P8	P7	P6	P5	P4	P3	P2	P1	6	5	4	3	2	1	E1		
51940-263-- NOTE: 3	D C B A																				



CODE	DIM "M" MATING LENGTH	CONTACT TYPE
E	[N/A]	SIGNAL
PA	[1.07]	POWER
HA	[N/A]	HOLD-DOWN
X	OMITTED	

mat'l code		SEE NOTES		tolerances unless otherwise specified		CUSTOMER		FCI www.fciconnect.com	
ltr	ecn no.	dr	date	linear	0.X ±0.5	COPY	projection	title	
A	DG08-0240	W D	09/03/08	angles	0.XX ±0.25	MM		24S + 10P VERTICAL SOLDER RECEPT	product family PwrBlade code 213
				dr	Warren Du 08/19/08	scale	1:1	size	
				enr	Jerome Chen 08/19/08			dwg no	
				chr	Gary Hsieh 08/19/08			51940-263	
				appd	Joseph Hsia 08/19/08			sheet 1 of 4	
sheet index	revision sheet	A 1	A 2	A 3	A 4				

Pro/E

PDM: Rev: A

STATUS: Released

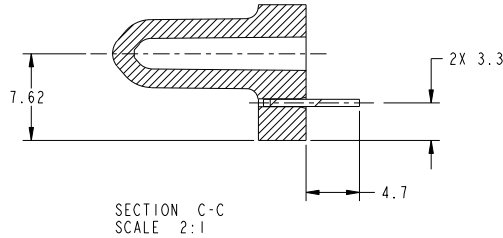
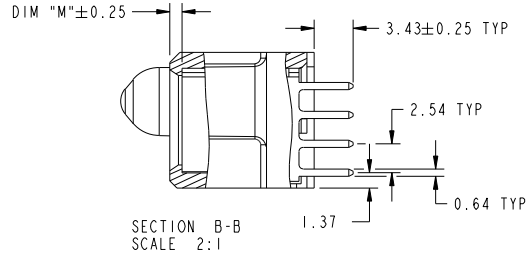
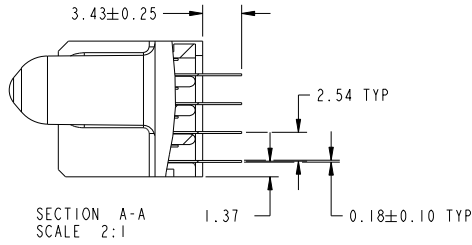
Printed: Dec 20, 2010

Tous droits strictement réservés. Reproduction ou communication à des tiers interdite sous quelque forme que ce soit sans autorisation écrite du propriétaire. Propriété de FCI. Droits de reproduction FCI.

All rights strictly reserved. Reproduction or issue to third parties in any form whatsoever is not permitted without written authority from the proprietor. Property of FCI. Copyright FCI.



PRODUCT NUMBER
51940-263..
NOTE: 3



mat'l code				tolerances unless otherwise specified		CUSTOMER		FCI			
ltr	ecn no.	dr	date	linear	0.X ±0.5	COPY	www.fciconnect.com				
A					0.XX ±0.25	projection	title 24S + 10P				
				angles	0.XXX ±0.1		VERTICAL SOLDER RECEPT				
				dr	0° ±2°		product family	PwrBlade	code	213	
				enr	Warren Du 08/19/08	← MM →	size	dwg no	51940-263	sheet	2 of 4
				chr	Jerome Chen 08/19/08	scale	A				
				appd	Gary Hsieh 08/19/08	1:1					
					Joseph Hsia 08/19/08						
sheet index	revision sheet										

1 | 2

Pro/E

PDM: Rev: A

STATUS: Released

Printed: Dec 20, 2010

1 | 2

3 |

4

A

A

B

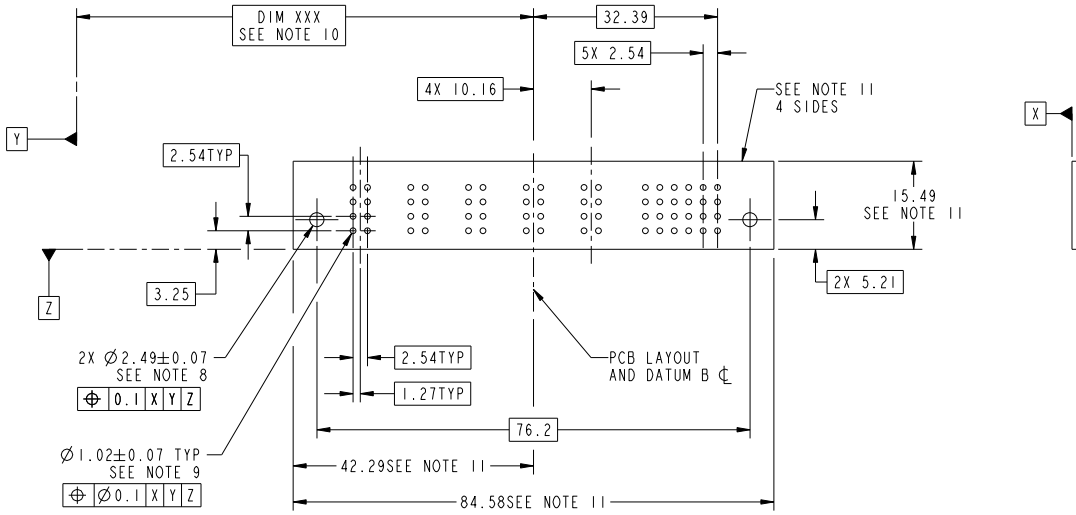
B

Tous droits strictement réservés. Reproduction ou communication à des tiers interdite sous quelque forme que ce soit sans autorisation écrite du propriétaire. Propriété de c FCI. Droits de reproduction FCI.

All rights strictly reserved. Reproduction or issue to third parties in any form whatever is not permitted without written authority from the proprietor. Property of FCI. Copyright FCI.



PRODUCT NUMBER
51940-263..
NOTE: 3



RECOMMENDED PCB LAYOUT

mat'l code				tolerances unless otherwise specified		CUSTOMER		FCI		www.fciconnect.com	
ltr	ecn no.	dr	date	linear	0.X ±0.5	COPY		title		24S + 10P	
A					0.XX ±0.25	projection		VERTICAL SOLDER RECEPT			
				angles	0.XXX ±0.1			product family		PwrBlade	
				dr	0° ±2°			size		code	
				enr	Warren Du 08/19/08	MM		dwg no		213	
				chr	Jerome Chen 08/19/08	1:1		51940-263		sheet	
				appd	Gary Hsieh 08/19/08			A		3 of 4	
					Joseph Hsia 08/19/08						
sheet index	revision sheet										

Pro/E

PDM: Rev: A

STATUS: **Released**

Printed: Dec 20, 2010

Tous droits strictement réservés. Reproduction ou communication à des tiers interdite sous quelque forme que ce soit sans autorisation écrite du propriétaire. Propriété de c FCI. Droits de reproduction FCI.

All rights strictly reserved. Reproduction or issue to third parties in any form whatsoever is not permitted without written authority from the proprietor. Property of FCI. Copyright FCI.



PRODUCT NUMBER
 51940-263..
 NOTE: 3

NOTES:

1. DIMENSIONS AND TOLERANCES ARE IN ACCORDANCE WITH ASME Y14.5M, 1994 UNLESS OTHERWISE SPECIFIED.

CONNECTOR NOTES:

- ② HOUSING MATERIAL: UL 94 V-0 GLASS FILLED HIGH-TEMP THERMOPLASTIC
 POWER CONTACT MATERIAL: COPPER ALLOY
 SIGNAL PIN MATERIAL: COPPER ALLOY
- 3. PLATING SPEC.
 51940-263, 51940-263LF PLATING SPEC. WAS SHOWN IN THE PRINT OF 10064183.

④ MANUFACTURER'S NAME, P/N, AND DATE CODE TO APPEAR ON THIS SURFACE.

5. PRODUCT SPECIFICATION GS-12-149.
 APPLICATION SPECIFICATION BUS-20-067.

6. PACKAGED IN TRAYS.

PCB NOTES:

7. ALL HOLE DIAMETERS ARE FINISHED HOLE SIZE.

⑧ MOUNTING HOLES, WHERE APPLICABLE, ARE UNPLATED.

⑨ $\varnothing 1.151 \pm 0.025$ DRILLED HOLES PLATED WITH
 0.008 MIN SnPb OR Sn OVER 0.03
 TO 0.08 Cu PLATING TO ACHIEVE
 $\varnothing 1.02 \pm 0.07$ HOLE.

⑩ "DIM XXX" TO BE DETERMINED BY THE CUSTOMER.

⑪ CONNECTOR KEEP-OUT ZONE.

12. THE VOID CORING IN BETWEEN POWER MODULES, SIGNAL MODULES AND END MODULES ARE OPTIONAL AND THE SHAPE MAY BE DIFFERENT FOR OPTIMIZE THE MOLDING PROCESS. THE VOID CORING WILL NOT EFFECT TO PRODUCT FUNCTION.

mat'l code				tolerances unless otherwise specified		CUSTOMER		FCI	
ltr	ecn no.	dr	date	linear	0.X ± 0.5	COPY	www.fciconnect.com		
A					0.XX ± 0.25	projection	title 24S + 10P		
				angles	0.XXX ± 0.1		VERTICAL SOLDER RECEPT		
					0° ± 2°		product family	PwrBlade	code
		dr	Warren Du 08/19/08	enr	Jerome Chen 08/19/08	scale	size	dwg no	213
		chr	Gary Hsieh 08/19/08	appd	Joseph Hsia 08/19/08	1:1	A	51940-263	sheet
									4 of 4
sheet index	revision sheet								

1 | 2

Pro/E

PDM: Rev: A

STATUS: Released

Printed: Dec 20, 2010

A

A

B

B

1 | 2

3 |

4