

Excellent Integrated System Limited

Stocking Distributor

Click to view price, real time Inventory, Delivery & Lifecycle Information:

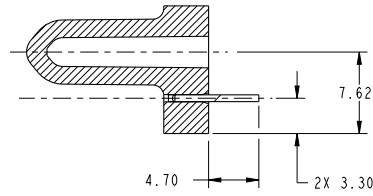
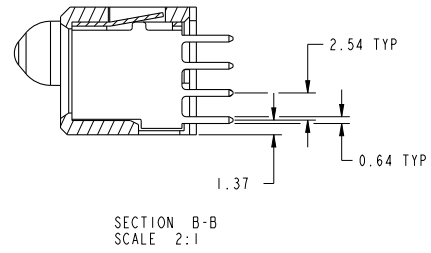
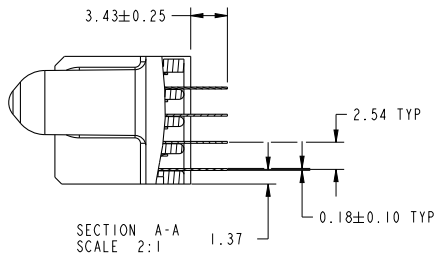
[FCI](#)

[51940-397LF](#)

For any questions, you can email us directly:

sales@integrated-circuit.com

PRODUCT NUMBER
51940-397:...



dr	Guang, Shi	2011/07/18	projection	MM	size	A4	scale	1:1
eng	Guang, Shi	2011/08/04			ecn no	-		
chr	-	-	product family	PwrBlade	rel level	Released		
appr	Pei-Ming Zheng	2011/08/04			cat. no.	8P + 12S		rev
					VERTICAL STB RECEPT		cat. no.	51940-397
			www.fci.com		Product - Customer Drw		cat. no.	Product - Customer Drw
					sheet 2 of 4			

Print File : REV C - 2009-08-09

PDS: Rev :A

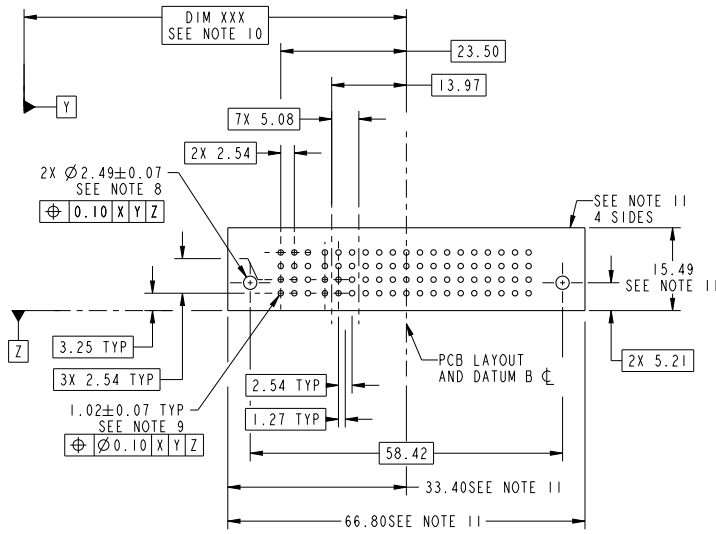
STATUS:Released

Printed: Aug 04, 2011



Copyright FCI.

PRODUCT NUMBER
51940-397:...



RECOMMENDED PCB LAYOUT

dr	Guang, Shi	2011/07/18	projection	MM	size	A4	scale	1:1	
eng	Guang, Shi	2011/08/04			ecn no	-	rel level		
chr	-	-			product family		PwrBlade	Released	
appr	Pei-Ming Zheng	2011/08/04				8P + 12S	dwg no	51940-397	
www.fci.com			VERTICAL STB RECEPT			cat. no.	Product - Customer Drw	rev	A
						sheet 3 of 4			

Prod File : REC - 2009-06-09

1

2

3

PDS: Rev :A

STATUS:Released

Printed: Aug 04, 2011

PRODUCT NUMBER
51940-397:...

NOTES:

1. DIMENSIONS AND TOLERANCES ARE IN ACCORDANCE WITH ASME Y14.5M, 1994 UNLESS OTHERWISE SPECIFIED.

CONNECTOR NOTES:

- ② HOUSING MATERIAL: UL 94 V-0 GLASS FILLED HIGH-TEMP THERMOPLASTIC
POWER CONTACT MATERIAL: COPPER ALLOY
SIGNAL PIN MATERIAL: COPPER ALLOY
- 3. SEE ITEM 5 & 6 IN PRINT 10064183 FOR PLATING SPEC OF 51940-397 AND 51940-397LF RESPECTIVELY.
- ④ MANUFACTURER'S NAME, DATE CODE AND OPTIONAL P/N TO APPEAR ON THIS SURFACE. THE P/N CAN BE OMITTED IF THERE IS NOT ENOUGH SPACE ON THIS SURFACE.
- 5. PRODUCT SPECIFICATION GS-12-149.
APPLICATION SPECIFICATION BUS-20-067.
- 6. PACKAGED IN TRAYS.
- PCB NOTES:
- 7. ALL HOLE DIAMETERS ARE FINISHED HOLE SIZE.
- ⑧ MOUNTING HOLES, WHERE APPLICABLE, ARE UNPLATED.
- ⑨ $\varnothing 1.151 \pm 0.025$ DRILLED HOLES PLATED WITH
0.008 MIN SnPb OR Sn OVER 0.03
TO 0.08 Cu PLATING TO ACHIEVE
 $\varnothing 1.02 \pm 0.07$ HOLE.
- ⑩ "DIM XXX" TO BE DETERMINED BY THE CUSTOMER.
- ⑪ CONNECTOR KEEP-OUT ZONE.
- 12. THE VOID CORING IN BETWEEN POWER MODULES, SIGNAL MODULES AND END MODULES ARE OPTIONAL AND THE SHAPE MAY BE DIFFERENT FOR OPTIMIZE THE MOLDING PROCESS. THE VOID CORING WILL NOT EFFECT TO PRODUCT FUNCTION.



Copyright FCI.

dr	Guang, Shi	2011/07/18	projection		size	A4	scale	1:1
eng	Guang, Shi	2011/08/04			ecn no	-		
chr	-	-	product family	PwrBlade	rel level	Released		
appr	Pei-Ming Zheng	2011/08/04			cat. no.	8P + 12S	title	VERTICAL STB RECEPT
www.fci.com			Product - Customer Drw		cat. no.	51940-397	dwg no	rev
					cat. no.			A
					cat. no.			sheet 4 of 4

Print File - REC - 2009-08-09