

Excellent Integrated System Limited

Stocking Distributor

Click to view price, real time Inventory, Delivery & Lifecycle Information:

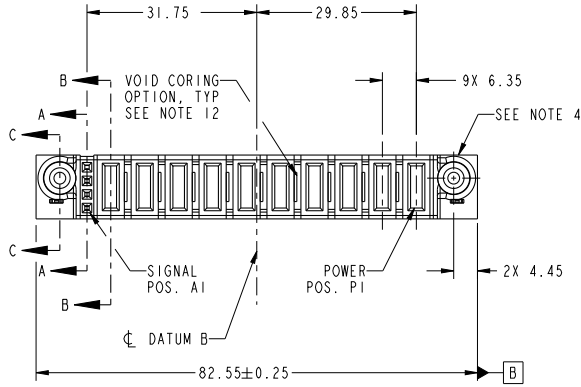
[FCI](#)

[51940-402LF](#)

For any questions, you can email us directly:

sales@integrated-circuit.com

PRODUCT NO.	ROWS	SIGNAL										POWER				
		E2	P10	P9	P8	P7	P6	P5	P4	P3	P2	P1	E1			
51940-402-- NOTE: 3	D C B A	HA	PA	PA	PA	PA	PA	PA	PA	PA	PA	PA	PA	PA	PA	HA



CODE	DIM "M" MATING LENGTH	CONTACT TYPE
E	[N/A]	SIGNAL
PA	[1.07]	POWER
HA	[N/A]	HOLD-DOWN

spec ref	SEE NOTES		dr	Guang, Shi	2011/09/02	projection	MM	size	A4	scale	1:1
tolerance std	TOLERANCES UNLESS OTHERWISE SPECIFIED		eng	Guang, Shi	2011/09/06			ecn no	-	rel level	Released
SEE NOTES			chr	-	-			product family	PwrBlade	rel level	Released
surface	linear	0.X ±0.50	appr	Pei-Ming Zheng	2011/09/08			cat. no.	10P+4S	VERTICAL STB RECEPT	rev
		0.XX ±0.25				www.fci.com	cat. no.	51940-402			A
		0.XXX ±0.10					Product - Customer Drw	sheet 1 of 4			
	angular	0° ±2°									

Prod File - REC - 2009-08-09

1

2

3

PDS: Rev :A

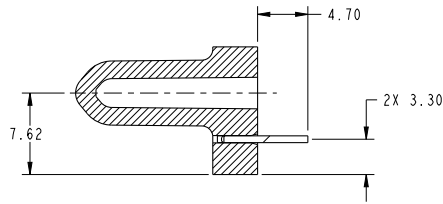
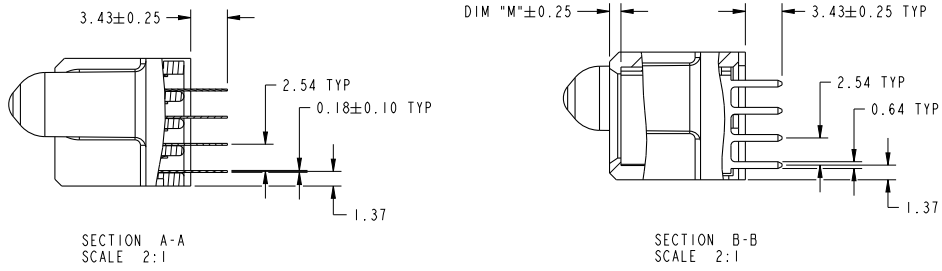
STATUS:Released

Printed: Sep 08, 2011



Copyright FCI.

PRODUCT NUMBER
51940-402--
NOTE: 3



SECTION A-A
SCALE 2:1

SECTION B-B
SCALE 2:1

SECTION C-C
SCALE 2:1

dr	Guang, Shi	2011/09/02	projection	MM	size	A4	scale	1:1
eng	Guang, Shi	2011/09/06			ecn no	-	rel level	Released
chr	-	-	product family	PwrBlade	rel level	Released		
appr	Pei-Ming Zheng	2011/09/08	www.fci.com		cat. no.	10P+4S	VERTICAL STB RECEPT	rev
					cat. no.	51940-402	Product - Customer Drw	sheet 2 of 4

Print File : REC - 2009-08-08

PDS: Rev :A

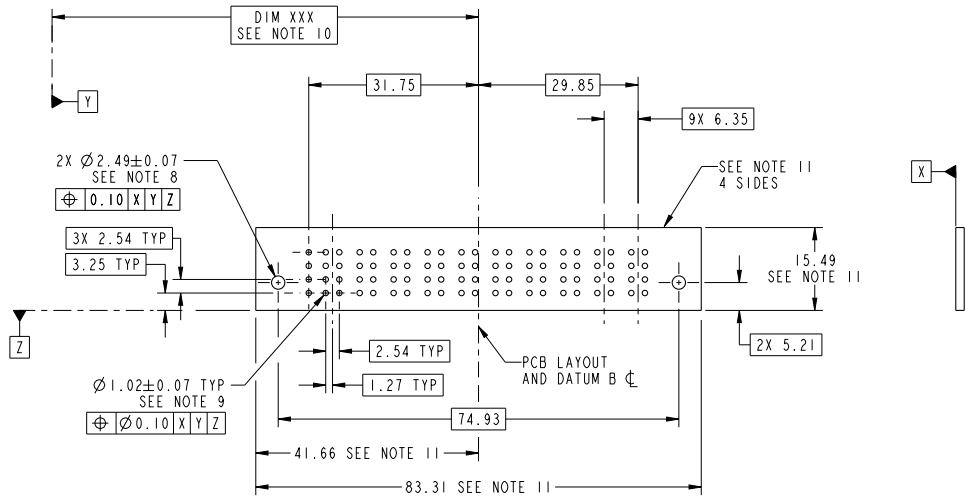
STATUS:Released

Printed: Sep 08, 2011



Copyright FCI.

PRODUCT NUMBER
51940-402--
NOTE: 3



RECOMMENDED PCB LAYOUT

dr	Guang, Shi	2011/09/02	projection	MM	size	A4	scale	1:1
eng	Guang, Shi	2011/09/06			ecn no	-	rel level	Released
chr	-	-	product family	PwrBlade	cat. no.	51940-402	rev	A
appr	Pei-Ming Zheng	2011/09/08	www.fci.com		Product - Customer Drw		sheet 3 of 4	

Print File : REC - 2009-08-09



Copyright FCI.

PRODUCT NUMBER
51940-402-- NOTE: 3

NOTES:

1. DIMENSIONS AND TOLERANCES ARE IN ACCORDANCE WITH ASME Y14.5M, 1994 UNLESS OTHERWISE SPECIFIED.

CONNECTOR NOTES:

- ② HOUSING MATERIAL: UL 94 V-0 GLASS FILLED HIGH-TEMP THERMOPLASTIC
POWER CONTACT MATERIAL: COPPER ALLOY
SIGNAL PIN MATERIAL: COPPER ALLOY
 - 3. SEE ITEM 5 & 6 IN PRINT 10064183 FOR PLATING SPEC OF 51940-402 AND 51940-402LF RESPECTIVELY.
 - ④ MANUFACTURER'S NAME, DATE CODE AND OPTIONAL P/N TO APPEAR ON THIS SURFACE, THE P/N CAN BE OMITTED IF THERE IS NOT ENOUGH SPACE ON THIS SURFACE.
 - 5. PRODUCT SPECIFICATION GS-12-149.
APPLICATION SPECIFICATION BUS-20-067.
 - 6. PACKAGED IN TRAYS.
- PCB NOTES:
- 7. ALL HOLE DIAMETERS ARE FINISHED HOLE SIZE.
 - ⑧ MOUNTING HOLES, WHERE APPLICABLE, ARE UNPLATED.
 - ⑨ $\varnothing 1.151 \pm 0.025$ DRILLED HOLES PLATED WITH 0.008 MIN SnPb OR Sn OVER 0.03 TO 0.08 Cu PLATING TO ACHIEVE $\varnothing 1.02 \pm 0.07$ HOLE.
 - ⑩ "DIM XXX" TO BE DETERMINED BY THE CUSTOMER.
 - ⑪ CONNECTOR KEEP-OUT ZONE.
12. THE VOID CORING IN BETWEEN POWER MODULES, SIGNAL MODULES AND END MODULES ARE OPTIONAL AND THE SHAPE MAY BE DIFFERENT FOR OPTIMIZE THE MOLDING PROCESS. THE VOID CORING WILL NOT EFFECT TO PRODUCT FUNCTION.

dr	Guang, Shi	2011/09/02	projection		MM	size	A4	scale	1:1	
eng	Guang, Shi	2011/09/06	chr			-	ecn no	-		
appr	Pei-Ming Zheng	2011/09/08	product family	PwrBlade		rel level	Released			
		title	10P+4S VERTICAL STB RECEPT			dwg no	51940-402		rev	A
www.fci.com		cat. no.	Product - Customer Drw				sheet 4 of 4			

Print File - REC - 2009-08-08



Copyright FCI.