

## Excellent Integrated System Limited

Stocking Distributor

Click to view price, real time Inventory, Delivery & Lifecycle Information:

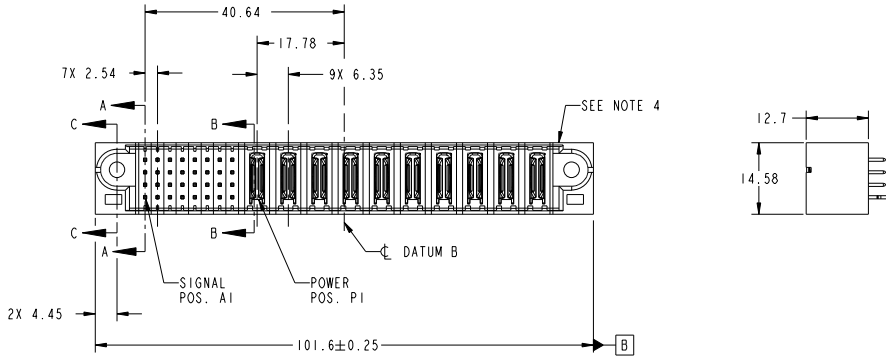
[FCI](#)  
[51952-163LF](#)

For any questions, you can email us directly:  
[sales@integrated-circuit.com](mailto:sales@integrated-circuit.com)

Tous droits strictement réservés. Reproduction ou communication à des tiers interdite sous quelque forme que ce soit sans autorisation écrite du propriétaire. Propriété de FCI. Droits de reproduction FCI.

All rights strictly reserved. Reproduction or issue to third parties in any form whatever is not permitted without written authority from the proprietor. Property of FCI. Copyright FCI.

PRODUCT NO.	ROWS	SIGNAL								POWER											
		E1	1	2	3	4	5	6	7	8	P1	P2	P3	P4	P5	P6	P7	P8	P9	P10	E2
51952-163-- NOTE ③	D C B A	[Pin Grid]								PA	PA	PA	PA	PA	PA	PA	PA	PA	PA	PA	PA



CODE	DIM "M" MATING LENGTH	CONTACT TYPE
PA	[N/A]	POWER
E	[6.86]	SIGNAL
HA	[N/A]	HOLD-DOWN
H	[5.59]	SIGNAL

mat'l code				tolerances unless otherwise specified		CUSTOMER	
ltr	ecm no.	dr	date	0.X	±0.5	COPY	
A	DG10-0006	WD	01/08/10	0.XX	±0.25	projection	www.fciconnect.com
				0.XXX	±0.1		
				0°	±2°		
				dr	Warren Du	01/04/10	
				enrg	Warren Du	01/04/10	
				chr	PM ZHENG	01/04/10	
				oppd	JOSEPH HSTA	01/04/10	
sheet index	revision sheet	A 1	A 2	A 3	A 4		

CUSTOMER		FCI	
COPY		www.fciconnect.com	
projection	title	32S + 10P	
		VERTICAL SOLDER HEADER	
product family	PwrBlade	code	213
size	dwg no	51952-163	sheet 1 of 4
scale	A		

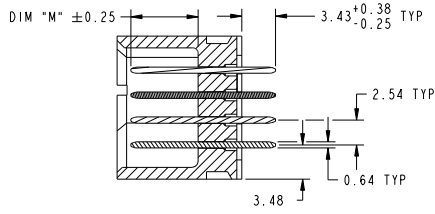
cage code 22526

Tous droits strictement réservés. Reproduction ou communication à des tiers interdite sous quelque forme que ce soit sans autorisation écrite du propriétaire. Propriété de FCI. Droits de reproduction FCI.

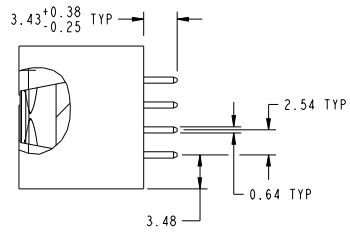
All rights strictly reserved. Reproduction or issue to third parties in any form whatever is not permitted without written authority from the proprietor. Property of FCI. Copyright FCI.



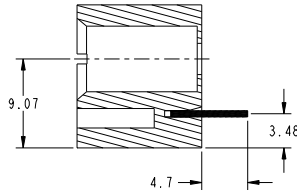
PRODUCT NUMBER  
51952-163...  
NOTE 3



SECTION A-A  
SCALE 2:1



SECTION B-B  
SCALE 2:1



SECTION C-C  
SCALE 2:1

mat'l code				tolerances unless otherwise specified		CUSTOMER		FCI	
ltr	ecm no.	dr	date	linear	0.X ±0.5	COPY	www.fciconnect.com		
A					0.XX ±0.25	projection		32S + 10P	
				angles	0.XXX ±0.1			VERTICAL SOLDER HEADER	
				dr	0° ±2°	MM		product family	PwrBlade
				enr	Warren Du 01/04/10	size	A	dwg no	51952-163
				chr	PM ZHENG 01/04/10	scale	1:1	code	213
				oppd	JOSEPH HSIA 01/04/10			sheet	2 of 4
sheet index	revision sheet							cage code	22526

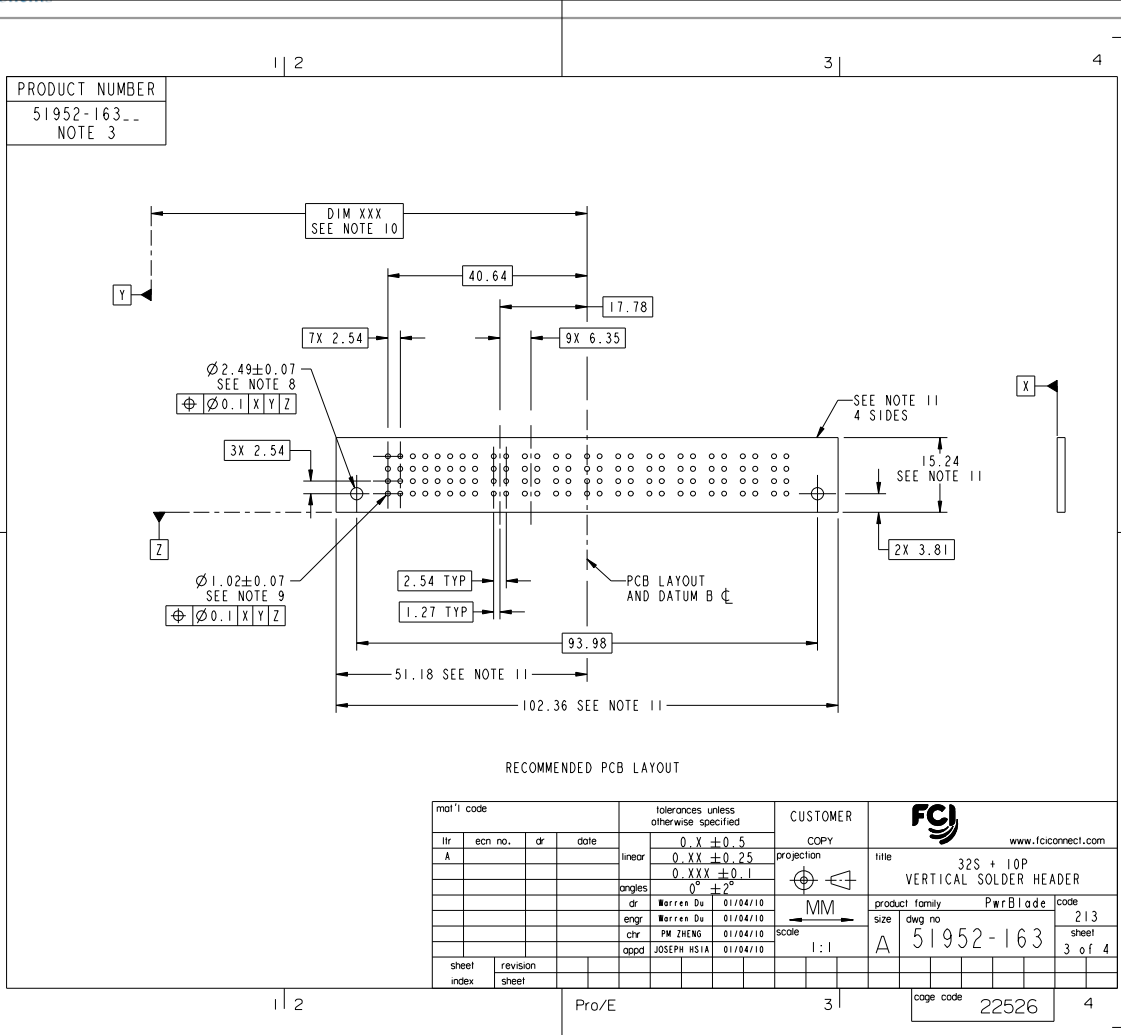
Pro/E

3

4

Tous droits strictement réservés. Reproduction ou communication à des tiers interdite sous quelque forme que ce soit sans autorisation écrite du propriétaire. Propriété de FCI. Droits de reproduction FCI.

All rights strictly reserved. Reproduction or issue to third parties in any form whatever is not permitted without written authority from the proprietor. Property of FCI. Copyright FCI.



RECOMMENDED PCB LAYOUT

mat'l code				tolerances unless otherwise specified		CUSTOMER	
ltr	ecm no.	dr	date	0.X ± 0.5	COPY	www.fciconnect.com	
A				0.XX ± 0.25	projection	title 32S + 10P	
				0.XXX ± 0.1		VERTICAL SOLDER HEADER	
				angles 0° ± 2°	MM	product family	PwrBlade
				dr Warren Du 01/04/10	size	dwg no	213
				enr Warren Du 01/04/10	scale	51952-163	sheet 3 of 4
				chr PW ZHENG 01/04/10	1:1		
				oppd JOSEPH HSIA 01/04/10			
sheet index	revision sheet					cage code	22526

Tous droits strictement réservés. Reproduction ou communication à des tiers interdite sous quelque forme que ce soit sans autorisation écrite du propriétaire. Propriété de FCI. Droits de reproduction FCI.

All rights strictly reserved. Reproduction or issue to third parties in any form whatever is not permitted without written authority from the proprietor. Property of FCI. Copyright FCI.

PRODUCT NUMBER  
51952-163...  
NOTE 3

NOTES:

1. DIMENSIONS AND TOLERANCES ARE IN ACCORDANCE WITH ASME Y14.5M, 1994 UNLESS OTHERWISE SPECIFIED.

CONNECTOR NOTES:

- 2 HOUSING MATERIAL: UL 94 V-0 GLASS FILLED HIGH-TEMP THERMOPLASTIC  
POWER CONTACT MATERIAL: COPPER ALLOY  
SIGNAL PIN MATERIAL: COPPER ALLOY
  - 3. SEE ITEM 1 & 2 IN PRINT I0064183 FOR PLATING SPEC OF 51952-163 AND 51952-163LF RESPECTIVELY.
  - 4 MANUFACTURER'S NAME, DATE CODE AND OPTIONAL P/N TO APPEAR ON THIS SURFACE. THE P/N CAN BE OMITTED IF THERE IS NOT ENOUGH SPACE ON THIS SURFACE.
  - 5. PRODUCT SPECIFICATION GS-12-149.  
APPLICATION SPECIFICATION BUS-20-067.
  - 6. PACKAGED IN TRAYS.
- PCB NOTES:
- 7. ALL HOLE DIAMETERS ARE FINISHED HOLE SIZE.
  - 8. MOUNTING HOLES, WHERE APPLICABLE, ARE UNPLATED.
  - 9  $\varnothing 1.151 \pm 0.025$  DRILLED HOLES PLATED WITH 0.008 MIN SnPb OR Sn OVER .001 [0.03] TO 0.08 Cu PLATING TO ACHIEVE  $\varnothing 1.02 \pm .07$  HOLE.
  - 10 "DIM XXX" TO BE DETERMINED BY THE CUSTOMER.
  - 11 CONNECTOR KEEP-OUT ZONE.

mat'l code				tolerances unless otherwise specified		CUSTOMER		FCI	
lfr	ecm no.	dr	date	linear	0.X ± 0.5	COPY	www.fciconnect.com		
A					0.XX ± 0.25	projection	title		
				angles	0.XXX ± 0.1		32S + 10P		
				dr	0° ± 2°		VERTICAL SOLDER HEADER		
				engr	Warren Du 01/04/10	product family	PwrBlade	code	213
				chr	PM ZHENG 01/04/10	size	A	dwg no	51952-163
				oppd	JOSEPH HSIA 01/04/10	scale	1:1	sheet	4 of 4
sheet index	revision sheet								

Pro/E

cage code 22526