

Excellent Integrated System Limited

Stocking Distributor

Click to view price, real time Inventory, Delivery & Lifecycle Information:

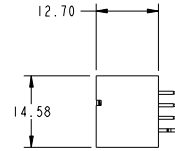
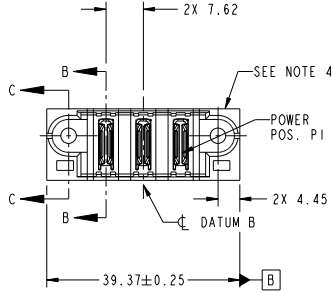
[FCI](#)
[51952-174LF](#)

For any questions, you can email us directly:
sales@integrated-circuit.com

Tous droits strictement réservés. Reproduction ou communication à des tiers interdite sous quelque forme que ce soit sans autorisation écrite du propriétaire. Propriété de FCI. Droits de reproduction FCI.

All rights strictly reserved. Reproduction or issue to third parties in any form whatever is not permitted without written authority from the proprietor. Property of FCI. Copyright FCI.

PRODUCT NO. 51952-174-- NOTE ③	POWER				
	E1	P1	P2	P3	E2
	PA	PA	PA	PA	



CODE	DIM "M" MATING LENGTH	CONTACT TYPE
PA	[N/A]	POWER
HA	[N/A]	HOLD-DOWN

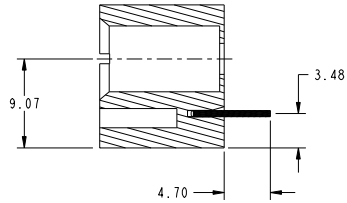
mat'l code				tolerances unless otherwise specified				CUSTOMER		FCI		www.fciconnect.com	
ltr	ecm no.	dr	date	linear	0.X ±0.5	projection	COPY	title				3ACP	
A	DG10-0218	SM	06/08/10		0.XX ±0.25			VERTICAL SOLDER HEADER				213	
				angles	0° ±2°		MM	product family				PwrBlade	
				dr	Shower Mo 06/08/10	scale	1:1	size				dwg no	
				enrg	Shower Mo 06/08/10			A				51952-174	
				chr	PM ZHENG 06/08/10							sheet	
				oppd	JOSEPH HSIA 06/08/10							1 of 4	
sheet index	revision sheet	A 1	A 2	A 3	A 4			cage code				22526	

Tous droits strictement réservés. Reproduction ou communication à des tiers interdite sous quelque forme que ce soit sans autorisation écrite du propriétaire. Propriété de FCI. Droits de reproduction FCI.

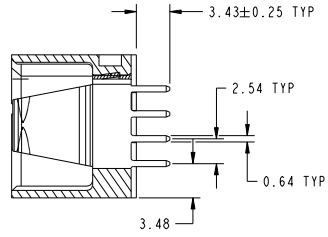
All rights strictly reserved. Reproduction or issue to third parties in any form whatever is not permitted without written authority from the proprietor. Property of FCI. Copyright FCI.



PRODUCT NUMBER
51952-174...
NOTE 3



SECTION C-C
SCALE 2:1



SECTION B-B
SCALE 2:1

mat'l code				tolerances unless otherwise specified		CUSTOMER		FCI	
ltr	ecm no.	dr	date	linear	0.X ± 0.5	COPY	www.fciconnect.com		
A					0.XX ± 0.25	projection		title	
				angles	0.XXX ± 0.1			3ACP	
				dr	0° ± 2°	MM		VERTICAL SOLDER HEADER	
				Shower Mo	06/08/10	scale		product family	PwrBlade
				engr	06/08/10	1:1		size	code
				chr	06/08/10			dwg no	213
				oppd	06/08/10			51952-174	sheet
sheet index	revision sheet								2 of 4

Pro/E

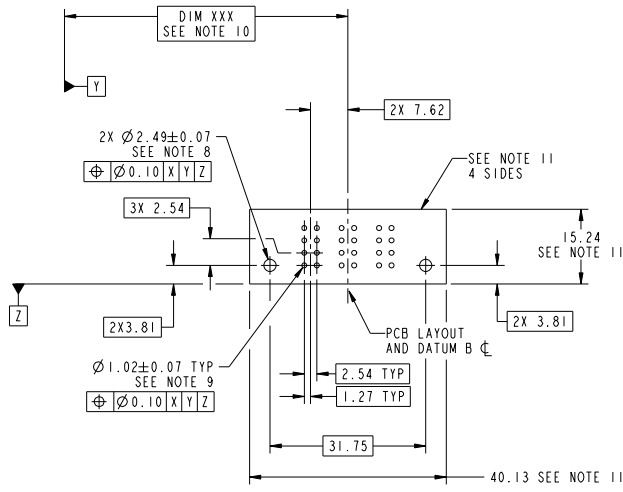
cage code 22526

Tous droits strictement réservés. Reproduction ou communication à des tiers interdite sous quelque forme que ce soit sans autorisation écrite du propriétaire. Propriété de FCI. Droits de reproduction FCI.



All rights strictly reserved. Reproduction or issue to third parties in any form whatever is not permitted without written authority from the proprietor. Property of FCI. Copyright FCI.

PRODUCT NUMBER
51952-174...
NOTE 3



RECOMMENDED PCB LAYOUT

mat'l code				tolerances unless otherwise specified		CUSTOMER	
lfr	ecm no.	dr	date	0.X ± 0.5	COPY	www.fciconnect.com	
A				0.XX ± 0.25	projection	title	
				0.XXX ± 0.1		3ACP	
				0° ± 2°	MM	VERTICAL SOLDER HEADER	
		dr	Shower Mo	06/08/10	scale	product family	PwrBlade
		enr	Shower Mo	06/08/10	1:1	size	code
		chr	PM ZHENG	06/08/10		dwg no	213
		oppd	JOSEPH HSIA	06/08/10		51952-174	sheet
sheet index	revision sheet						3 of 4

Pro/E

cage code 22526

Tous droits strictement réservés. Reproduction ou communication à des tiers interdite sous quelque forme que ce soit sans autorisation écrite du propriétaire. Propriété de FCI. Droits de reproduction FCI.

All rights strictly reserved. Reproduction or issue to third parties in any form whatever is not permitted without written authority from the proprietor. Property of FCI. Copyright FCI.

PRODUCT NUMBER
51952-174_
NOTE 3

NOTES:

1. DIMENSIONS AND TOLERANCES ARE IN ACCORDANCE WITH ASME Y14.5M, 1994 UNLESS OTHERWISE SPECIFIED.

CONNECTOR NOTES:

2 HOUSING MATERIAL: UL 94 V-0 GLASS FILLED HIGH-TEMP THERMOPLASTIC
POWER CONTACT MATERIAL: COPPER ALLOY
3. SEE ITEM 1 & 2 IN PRINT 10064183 FOR PLATING SPEC OF 51952-174 AND 51952-174LF RESPECTIVELY.

4 MANUFACTURER'S NAME, DATE CODE AND OPTIONAL P/N TO APPEAR ON THIS SURFACE. THE P/N CAN BE OMITTED IF THERE IS NOT ENOUGH SPACE ON THIS SURFACE.

5. PRODUCT SPECIFICATION GS-12-149.
APPLICATION SPECIFICATION BUS-20-067.

6. PACKAGED IN TRAYS.

PCB NOTES:

7. ALL HOLE DIAMETERS ARE FINISHED HOLE SIZE.

8. MOUNTING HOLES, WHERE APPLICABLE, ARE UNPLATED.

9 $\varnothing 1.151 \pm 0.025$ DRILLED HOLES PLATED WITH
0.008 MIN SnPb OR Sn OVER .001 (0.03)
TO 0.08 Cu PLATING TO ACHIEVE
 $\varnothing 1.02 \pm 0.07$ HOLE.

10 "DIM XXX" TO BE DETERMINED BY THE CUSTOMER.

11 CONNECTOR KEEP-OUT ZONE.

mat'l code				tolerances unless otherwise specified		CUSTOMER		FCI	
ltr	ecm no.	dr	date	linear	angular	projection	title	product family	code
A				0.X ± 0.5	0.XX ± 0.25	0.XXX ± 0.1	3ACP	PwrBlade	213
				0° ± 2°			VERTICAL SOLDER HEADER		4 of 4
				dr	Shower	Mo	06/08/10		
				engr	Shower	Mo	06/08/10		
				chr	Mo	06/08/10			
				oppd	Mo	06/08/10			
sheet index	revision sheet								

Pro/E

cage code 22526