

## Excellent Integrated System Limited

Stocking Distributor

Click to view price, real time Inventory, Delivery & Lifecycle Information:

[FCI](#)

[51952-179LF](#)

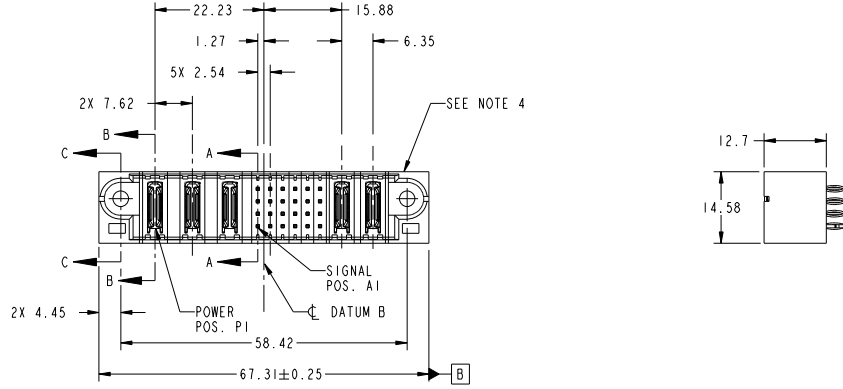
For any questions, you can email us directly:

[sales@integrated-circuit.com](mailto:sales@integrated-circuit.com)

Tous droits strictement réservés. Reproduction ou communication à des tiers interdite sous quelque forme que ce soit sans autorisation écrite du propriétaire. Propriété de FCI. Droits de reproduction FCI.

All rights strictly reserved. Reproduction or issue to third parties in any form whatever is not permitted without written authority from the proprietor. Property of FCI. Copyright FCI.

PRODUCT NO.	ROWS	POWER			SIGNAL						POWER			
		E1	P1	P2	P3	1	2	3	4	5	6	P4	P5	E2
51952-179-- NOTE ③	D C B A													



CODE	DIM "M" MATING LENGTH	CONTACT TYPE
PC	[N/A]	POWER
G	[6.86]	SIGNAL
HA	[N/A]	HOLD-DOWN
K	[5.59]	SIGNAL

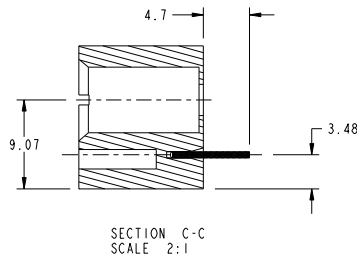
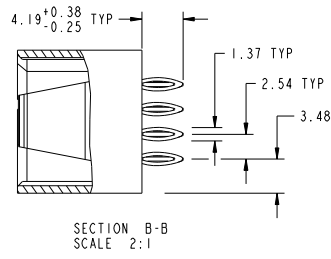
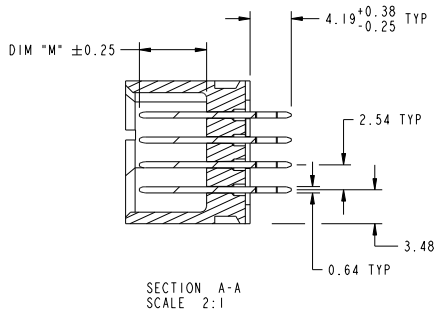
mat'l code				tolerances unless otherwise specified		CUSTOMER	
ltr	ecm no.	dr	date	0.X ±0.5	projection	www.fciconnect.com	
A	DG10-0448	AL	12/11/10	0.XX ±0.25		title 3ACP + 24S + 2P	
				0.XXX ±0.1		VERTICAL PRESS-FIT HEADER	
				angles 0° ±2°	scale 1:1	product family	PwrBlade
				dr Anson Liu 12/11/10		size	A
				enrg Anson Liu 12/11/10		dwg no	51952-179
				chr Anson Liu 12/11/10		code	213
				oppd Jerome Chen 12/11/10		sheet	1 of 4
sheet index	revision sheet	A 1	A 2	A 3	A 4	cage code	22526

Tous droits strictement réservés. Reproduction ou communication à des tiers interdite sous quelque forme que ce soit sans autorisation écrite du propriétaire. Propriété de FCI. Droits de reproduction FCI.

All rights strictly reserved. Reproduction or issue to third parties in any form whatever is not permitted without written authority from the proprietor. Property of FCI. Copyright FCI.



PRODUCT NUMBER  
51952-179...  
NOTE 3



mat'l code				tolerances unless otherwise specified		CUSTOMER		FCI	
ltr	ecm no.	dr	date	linear	0.X ±0.5	COPY	www.fciconnect.com		
A					0.XX ±0.25	projection		title 3ACP + 24S + 2P	
				angles	0° ±2°	MM		VERTICAL PRESS-FIT HEADER	
				dr	Asnon Liu 12/11/10	scale		product family	PwrBlade
				enr	Asnon Liu 12/11/10	1:1		size	code
				chr	Asnon Liu 12/11/10			dwg no	213
				oppd	Jerome Chen 12/11/10			51952-179	sheet
sheet index	revision sheet								2 of 4

Pro/E

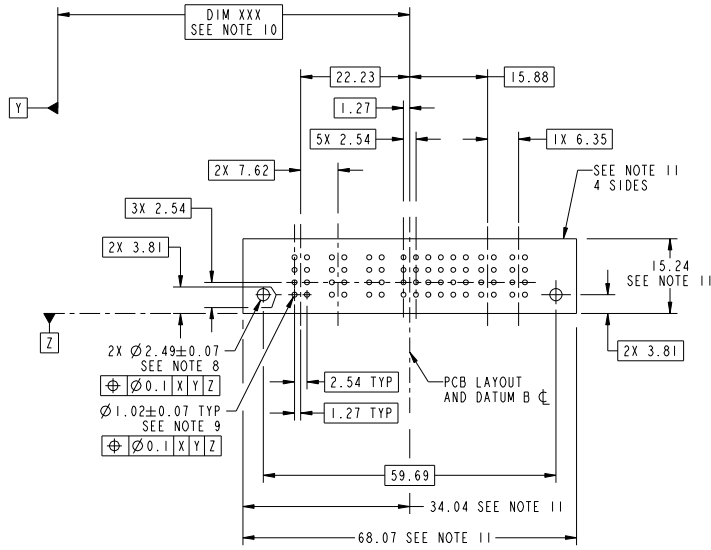
cage code 22526

Tous droits strictement réservés. Reproduction ou communication à des tiers interdite sous quelque forme que ce soit sans autorisation écrite du propriétaire. Propriété de FCI. Droits de reproduction FCI.

All rights strictly reserved. Reproduction or issue to third parties in any form whatever is not permitted without written authority from the proprietor. Property of FCI. Copyright FCI.



PRODUCT NUMBER  
51952-179...  
NOTE 3



mat'l code				tolerances unless otherwise specified		CUSTOMER	
ltr	ecm no.	dr	date	0.X ± 0.5	COPY	www.fciconnect.com	
A				0.XX ± 0.25	projection	title 3ACP + 24S + 2P	
				0.XXX ± 0.1		VERTICAL PRESS-FIT HEADER	
				angles 0° ± 2°	MM	product family	PwrBlade
		dr	Asnon Liu 12/11/10		scale	size	code 213
		enr	Asnon Liu 12/11/10		1:1	dwg no	sheet 3 of 4
		chr	Asnon Liu 12/11/10			51952-179	
		oppd	Jerome Chen 12/11/10				
sheet index	revision sheet					cage code	22526

Tous droits strictement réservés. Reproduction ou communication à des tiers interdite sous quelque forme que ce soit sans autorisation écrite du propriétaire. Propriété de FCI. Droits de reproduction FCI.

All rights strictly reserved. Reproduction or issue to third parties in any form whatever is not permitted without written authority from the proprietor. Property of FCI. Copyright FCI.

PRODUCT NUMBER  
51952-179\_  
NOTE 3

NOTES:

1. DIMENSIONS AND TOLERANCES ARE IN ACCORDANCE WITH ASME Y14.5M, 1994 UNLESS OTHERWISE SPECIFIED.

CONNECTOR NOTES:

- ② HOUSING MATERIAL: UL 94 V-0 GLASS FILLED HIGH-TEMP THERMOPLASTIC  
POWER CONTACT MATERIAL: COPPER ALLOY  
SIGNAL PIN MATERIAL: COPPER ALLOY
  - 3. PLATING:  
SEE ITEM 3 & 4 IN PRINT 10064183 FOR PLATING SPEC OF 51952-179; 51952-179LF PRESPECTIVELY
  - ④ MANUFACTURER'S NAME, DATE CODE AND OPTIONAL P/N TO APPEAR ON THIS SURFACE. THE P/N CAN BE OMITTED IF THERE IS NOT ENOUGH SPACE ON THIS SURFACE.
  - 5. PRODUCT SPECIFICATION GS-12-149.  
APPLICATION SPECIFICATION BUS-20-067.
  - 6. PACKAGED IN TRAYS.
- PCB NOTES:
- 7. ALL HOLE DIAMETERS ARE FINISHED HOLE SIZE.
  - 8. MOUNTING HOLES, WHERE APPLICABLE, ARE UNPLATED.
  - ⑨  $\varnothing 1.151 \pm 0.025$  DRILLED HOLES PLATED WITH  
0.008 MIN SnPb OR Sn OVER .001 [0.03]  
TO 0.08 Cu PLATING TO ACHIEVE  
 $\varnothing 1.02 \pm 0.07$  HOLE.
  - ⑩ "DIM XXX" TO BE DETERMINED BY THE CUSTOMER.
  - ⑪ CONNECTOR KEEP-OUT ZONE.
12. FOR PRESS FIT APPLICATION USE FCI CAM TOOL 430169-XXX.

mat'l code				tolerances unless otherwise specified		CUSTOMER		FCI	
ltr	ecm no.	dr	date			COPY		www.fciconnect.com	
A				linear	0.X ± 0.5	projection		title	3ACP + 24S + 2P
					0.XX ± 0.25			VERTICAL PRESS-FIT HEADER	
				angles	0° ± 2°			product family	PwrBlade
				dr	Asnon Liu 12/11/10	scale	1:1	size	A
				engr	Asnon Liu 12/11/10			dwg no	51952-179
				chr	Asnon Liu 12/11/10			code	213
				oppd	Jerome Chen 12/11/10			sheet	4 of 4
sheet index	revision sheet							cage code	22526