

## Excellent Integrated System Limited

Stocking Distributor

Click to view price, real time Inventory, Delivery & Lifecycle Information:

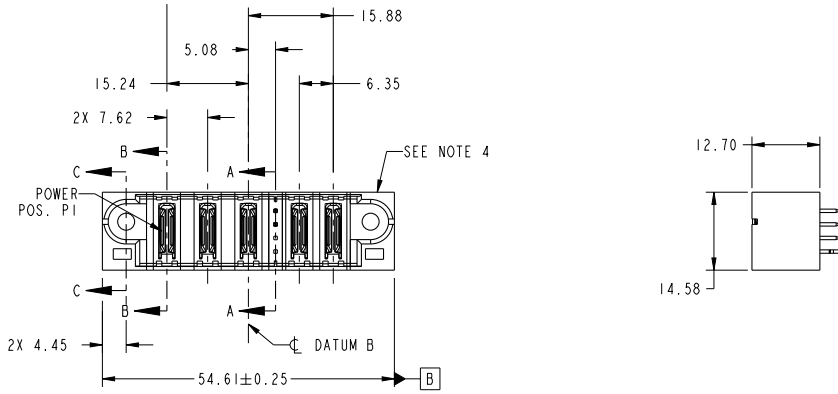
[FCI](#)

[51952-199LF](#)

For any questions, you can email us directly:

[sales@integrated-circuit.com](mailto:sales@integrated-circuit.com)

PRODUCT NO.	ROWS	POWER				SIGNAL			
		E1	P1	P2	P3	P4	P5	E2	
51952-199- NOTE ③	D C B A								



CODE	DIM "M" MATING LENGTH	CONTACT TYPE
PA	[N/A]	POWER
E	[6.86]	SIGNAL
HA	[N/A]	HOLD-DOWN
X	OMITTED	OMITTED

spec ref	See Notes		dr	X Q Wang	2011/10/21	projection		size	A4	scale	1:1
tolerance std	TOLERANCES UNLESS OTHERWISE SPECIFIED		eng	Guang, Shi	2012/02/23	product family	PwrBlade	ecn no	-	rel level	Released
See Notes			chr	-	-			rel level	Released		
surface	linear	0.X ±0.50	 3ACP + 4S + 2P VERTICAL STB HEADER www.fci.com			cat. no.	Product - Customer Drw	rel level	A4	scale	1:1
		0.XX ±0.25									
		0.XXX ±0.10									
	angular	0° ±2°									
			appr	Pei-Ming Zheng	2012/02/23	product family		PwrBlade	rel level	Released	
						dwg no	51952-199		rev	A	
						Product - Customer Drw		sheet 1 of 4			

Prod File - REV C - 2009-06-09

1

2

3

PDS: Rev :A

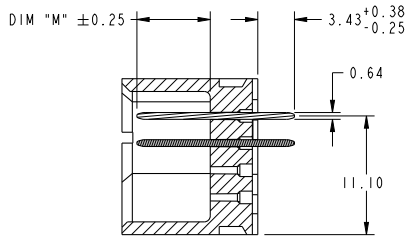
STATUS:Released

Printed: Feb 23, 2012

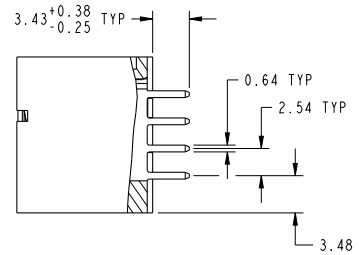


Copyright FCI.

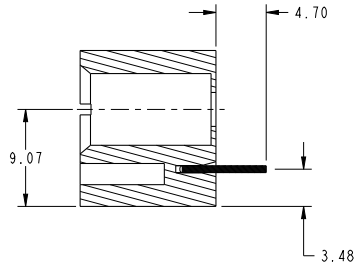
PRODUCT NUMBER
51952-199__
NOTE 3



SECTION A-A  
SCALE 2:1



SECTION B-B  
SCALE 2:1



SECTION C-C  
SCALE 2:1

spec ref	See Notes			dr	X Q Wang	2011/10/21	projection	MM	size	A4	scale	1:1
tolerance std	TOLERANCES UNLESS OTHERWISE SPECIFIED			eng	Guang, Shi	2012/02/23			ecn no	-	rel level	Released
See Notes				chr	-	appr			Pei-Ming Zheng	2012/02/23	product family	PwrBlade
surface		linear	0.X	±0.50		<b>3ACP + 4S + 2P</b> <b>VERTICAL STB HEADER</b>		<b>51952-199</b>	<b>A</b>			
			0.XX	±0.25						cat. no.	Product - Customer Drw	sheet 2 of 4
			0.XXX	±0.10								
		angular	0°	±2°								

Print File: REV C - 2009-08-09

1

2

3

PDS: Rev :A

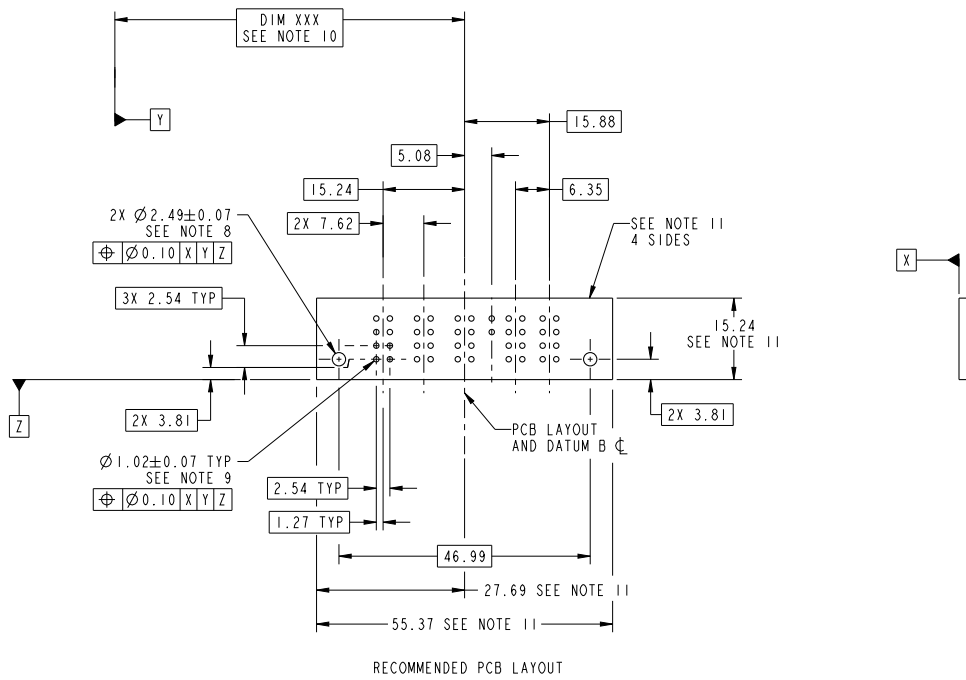
STATUS:Released

Printed: Feb 23, 2012



Copyright FCI.

PRODUCT NUMBER  
51952-199\_\_  
NOTE 3



RECOMMENDED PCB LAYOUT

spec ref	See Notes			dr	X Q Wang	2011/10/21	projection	MM	size	A4	scale	1:1
tolerance std	TOLERANCES UNLESS OTHERWISE SPECIFIED			eng	Guang, Shi	2012/02/23			ecn no	-	rel level	Released
See Notes				chr	-	-			product family	PwrBlade		
surface	linear	0.X	±0.50									
		0.XX	±0.25									
		0.XXX	±0.10									
	angular	0°	±2°	www.fci.com	cat. no.	3ACP + 4S + 2P VERTICAL STB HEADER	product family	PwrBlade	rel level	Released	rev	A
							Product - Customer Drw	sheet 3 of 4				

Print File : REV C - 2009-08-09

PDS: Rev :A

STATUS:Released

Printed: Feb 23, 2012

PRODUCT NUMBER
51952-199_
NOTE 3

NOTES:

1. DIMENSIONS AND TOLERANCES ARE IN ACCORDANCE WITH ASME Y14.5M, 1994 UNLESS OTHERWISE SPECIFIED.

CONNECTOR NOTES:

- ② HOUSING MATERIAL: UL 94 V-0 GLASS FILLED HIGH-TEMP THERMOPLASTIC  
POWER CONTACT MATERIAL: COPPER ALLOY  
SIGNAL PIN MATERIAL: COPPER ALLOY
  - 3. SEE ITEM 1 & 2 IN PRINT 10064183 FOR PLATING SPEC OF 51952-199 AND 51952-199LF RESPECTIVELY.
  - ④ MANUFACTURER'S NAME, DATE CODE AND OPTIONAL P/N TO APPEAR ON THIS SURFACE. THE P/N CAN BE OMITTED IF THERE IS NOT ENOUGH SPACE ON THIS SURFACE.
  - 5. PRODUCT SPECIFICATION GS-12-149.  
APPLICATION SPECIFICATION BUS-20-067.
  - 6. PACKAGED IN TRAYS.
- PCB NOTES:
- 7. ALL HOLE DIAMETERS ARE FINISHED HOLE SIZE.
  - 8. MOUNTING HOLES, WHERE APPLICABLE, ARE UNPLATED.
  - ⑨  $\varnothing 1.151 \pm 0.025$  DRILLED HOLES PLATED WITH 0.008 MIN SnPb OR Sn OVER .001 [0.03] TO 0.08 Cu PLATING TO ACHIEVE  $\varnothing 1.02 \pm 0.07$  HOLE.
  - ⑩ "DIM XXX" TO BE DETERMINED BY THE CUSTOMER.
  - ⑪ CONNECTOR KEEP-OUT ZONE.

spec ref	See Notes			dr	X Q Wang	2011/10/21	projection	MM	size	A4	scale	1:1
tolerance std	TOLERANCES UNLESS OTHERWISE SPECIFIED			eng	Guang, Shi	2012/02/23		← →	ecn no	-		
See Notes				chr	-	-			rel level	Released		
surface	linear	0.X	±0.50	appr	Pei-Ming Zheng	2012/02/23	product family	PwrBlade	cat. no.	3ACP + 4S + 2P	title	VERTICAL STB HEADER
		0.XX	±0.25				dwg no	51952-199	rev	A		
		0.XXX	±0.10				www.fci.com	Product - Customer Drw	sheet 4 of 4			
	angular	0°	±2°									

Prod File - REV C - 2009-08-09



Copyright FCI.