

## Excellent Integrated System Limited

Stocking Distributor

Click to view price, real time Inventory, Delivery & Lifecycle Information:

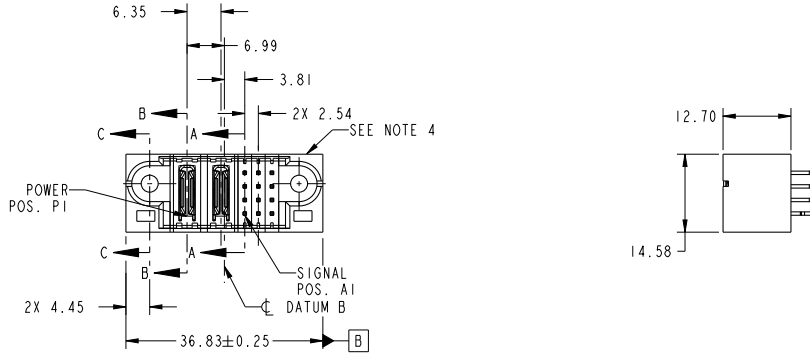
[FCI](#)

[51952-221LF](#)

For any questions, you can email us directly:

[sales@integrated-circuit.com](mailto:sales@integrated-circuit.com)

PRODUCT NO.	ROWS	POWER		SIGNAL			
		E1	P1	P2	A1	A2	E2
51952-221-- NOTE ③	D C B A						



CODE	DIM "M" MATING LENGTH	CONTACT TYPE
PB	[N/A]	POWER
F	[6.86]	SIGNAL
J	[5.59]	SIGNAL
HA	[N/A]	HOLD-DOWN

spec ref	See Notes		dr	Luo Weller	2012/07/09	projection		size	A4	scale	1:1
tolerance std	TOLERANCES UNLESS OTHERWISE SPECIFIED		eng	Luo Weller	2012/07/13	product family	PwrBlade	ecn no	-	rel level	Released
See Notes			chr	-	-			cat. no.	&model_name	Product - Customer Drw	sheet 1 of 4
surface	linear	0.X ±0.50	 2P + 12S VERTICAL SOLDER HEADER www.fci.com			dwg no	51952-221		rev	A	
		0.XX ±0.25									
		0.XXX ±0.10									
	angular	0° ±2°									

Prod File - REV C - 2009-08-09

1

2

3

PDS: Rev :A

STATUS:Released

Printed: Jul 16, 2012

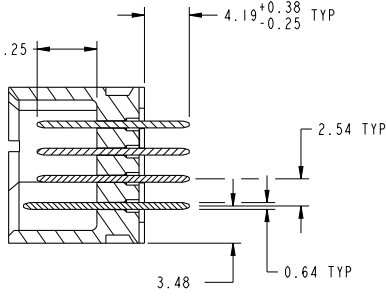


Copyright FCI.

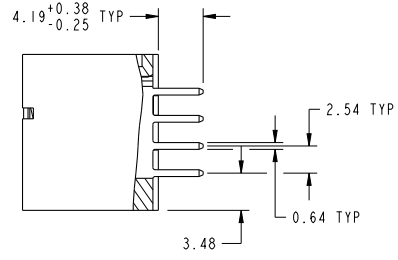
PRODUCT NUMBER

51952-221--  
NOTE 3

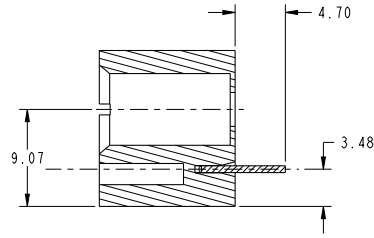
DIM "M" ±0.25



SECTION A-A  
SCALE 2:1



SECTION B-B  
SCALE 2:1



SECTION C-C  
SCALE 2:1

dr	Luo Weller	2012/07/09	projection	MM	size	A4	scale	1:1
eng	Luo Weller	2012/07/13			ecn no	-	rel level	
chr	-	-			product family	PwrBlade	Released	
appr	Pei-Ming Zheng	2012/07/16					2P + 12S	
www.fci.com						51952-221		
cat. no.			&model_name			Product - Customer Drw		sheet 2 of 4
						rev		A

Print File : REV C - 2009-08-09

1

2

3

PDS: Rev :A

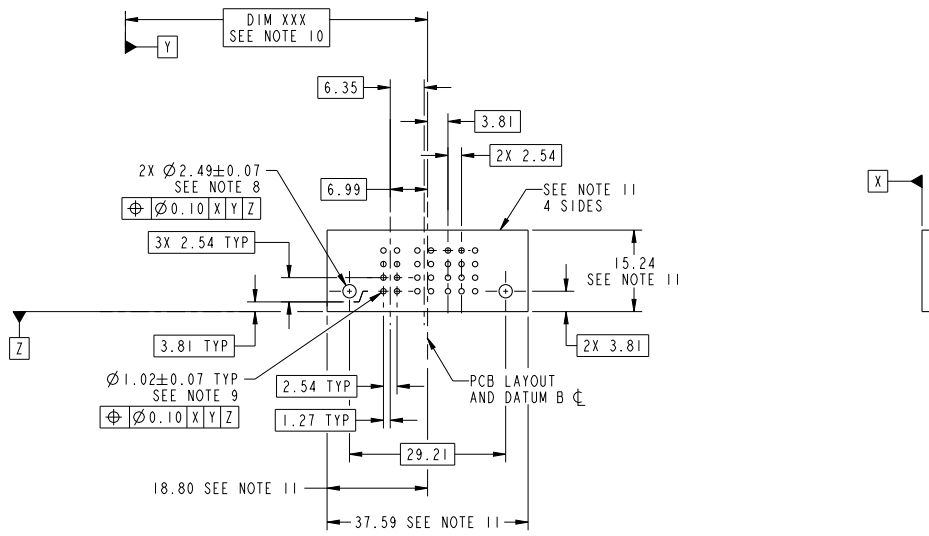
STATUS:Released

Printed: Jul 16, 2012



Copyright FCI.

PRODUCT NUMBER  
51952-221--  
NOTE 3



RECOMMENDED PCB LAYOUT

dr	Luo Weller	2012/07/09	projection	MM	size	A4	scale	1:1		
eng	Luo Weller	2012/07/13			ecn no	-				
chr	-	-			product family	PwrBlade	rel level	Released		
appr	Pei-Ming Zheng	2012/07/16				2P + 12S	dwg no	51952-221	rev	A
www.fci.com		cat. no.	model name		Product - Customer Drw			sheet 3 of 4		

Print File - REV C - 2009-06-09

PDS: Rev :A

STATUS:Released

Printed: Jul 16, 2012

**PRODUCT NUMBER**

51952-221...  
NOTE 3

**NOTES:**

1. DIMENSIONS AND TOLERANCES ARE IN ACCORDANCE WITH ASME Y14.5M, 1994 UNLESS OTHERWISE SPECIFIED.

**CONNECTOR NOTES:**

- ② HOUSING MATERIAL: UL 94 V-0 GLASS FILLED HIGH-TEMP THERMOPLASTIC  
POWER CONTACT MATERIAL: COPPER ALLOY  
SIGNAL PIN MATERIAL: COPPER ALLOY
  - 3. SEE ITEM 1 & 2 IN PRINT 10064183 FOR PLATING SPEC OF 51952-221 AND 51952-221LF RESPECTIVELY.
  - ④ MANUFACTURER'S NAME, DATE CODE AND OPTIONAL P/N TO APPEAR ON THIS SURFACE. THE P/N CAN BE OMITTED IF THERE IS NOT ENOUGH SPACE ON THIS SURFACE.
  - 5. PRODUCT SPECIFICATION GS-12-149.  
APPLICATION SPECIFICATION BUS-20-067.
  - 6. PACKAGED IN TRAYS.
- PCB NOTES:**
- 7. ALL HOLE DIAMETERS ARE FINISHED HOLE SIZE.
  - 8. MOUNTING HOLES, WHERE APPLICABLE, ARE UNPLATED.
  - ⑨  $\varnothing 1.151 \pm 0.025$  DRILLED HOLES PLATED WITH 0.008 MIN SnPb OR Sn OVER .001 [0.03] TO 0.08 Cu PLATING TO ACHIEVE  $\varnothing 1.02 \pm 0.07$  HOLE.
  - ⑩ "DIM XXX" TO BE DETERMINED BY THE CUSTOMER.
  - ⑪ CONNECTOR KEEP-OUT ZONE.

dr	Luo Weller	2012/07/09	projection			size	A4	scale	1:1		
eng	Luo Weller	2012/07/13				ecn no	-				
chr	-	-	product family	PwrBlade	rel level	<b>Released</b>					
appr	Pei-Ming Zheng	2012/07/16			title	2P + 12S		dwg no	51952-221	rev	A
www.fci.com		cat. no.	&model_name	Product - Customer Drw			sheet 4 of 4				

Print File - REV C - 2009-06-09



Copyright FCI.