

Excellent Integrated System Limited

Stocking Distributor

Click to view price, real time Inventory, Delivery & Lifecycle Information:

[FCI](#)

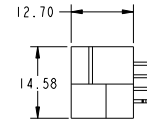
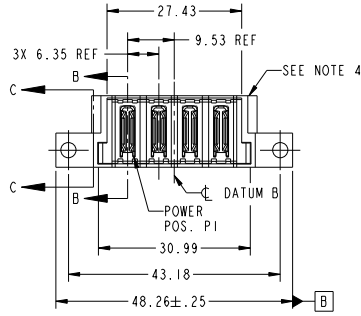
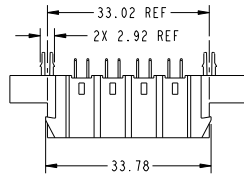
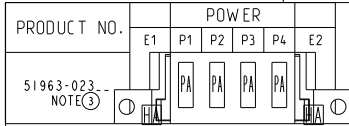
[51963-023LF](#)

For any questions, you can email us directly:

sales@integrated-circuit.com

Tous droits strictement réservés. Reproduction ou communication à des tiers interdite sous quelque forme que ce soit sans autorisation écrite du propriétaire. Propriété de C.FCI. Droits de reproduction FCI.

All rights strictly reserved. Reproduction or issue to third parties in any form whatever is not permitted without written authority from the proprietor. Property of FCI. Copyright FCI.



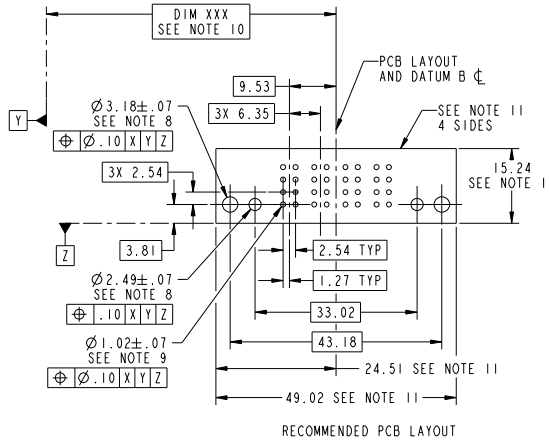
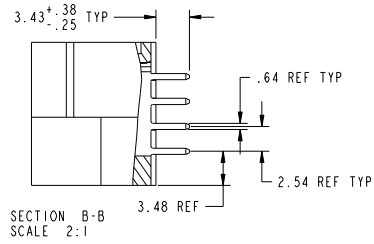
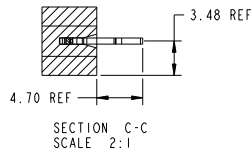
CODE	DIM "M" MATING LENGTH	CONTACT TYPE
PA	[N/A]	POWER
HA	[N/A]	HOLD-DOWN

mat'l code				tolerances unless otherwise specified				CUSTOMER		FCI	
lfr	ecm no.	dr	date	linear	0.X ± 0.3	COPY		www.fciconnect.com		title	
A	DG07-0315	JMG	07/23/07	angles	0.XX ± 0.13	projection	MM	4P		VERTICAL SOLDER HEADER	
				dr	0.XXX ± 0.051	MM	MM	product family		PwrBlade	
				engr	0° ± 2°	scale	1:1	size		code	
				chr	JM Guo 07/23/07			dwg no		213	
				oppd	Jerome Chen 07/23/07			51963-023		sheet	
sheet index	revision sheet	A	A		Gary Hsieh 07/23/07			cage code		1 of 3	
1	2		3		Joseph Hsiao 07/23/07			22526		4	

Tous droits strictement réservés. Reproduction ou communication de des tiers interdite sous quelque forme que ce soit sans autorisation écrite du propriétaire. Propriété de FCI. Droits de reproduction FCI.

All rights strictly reserved. Reproduction or issue to third parties in any form whatever is not permitted without written authority from the proprietor. Property of FCI. Copyright FCI.

PRODUCT NUMBER
51963-023...
NOTE 3



mat'l code				tolerances unless otherwise specified		CUSTOMER	
ltr	ecn no.	dr	date	linear	0 . X ± 0 . 3	COPY	www.fciconnect.com
A				angles	0 . XX ± 0 . 13	projection	title
				dr	0 . XXX ± 0 . 051	MM	4P VERTICAL SOLDER HEADER
				engr	0° ± 2°	scale	product family
				chr	JM Guo 07/23/07	1:1	PwrBlade
				appd	Jerome Chen 07/23/07		code
					Gary Hsieh 07/23/07		size
					Joseph Hsiao 07/23/07		dwg no
sheet index	revision sheet						51963-023
							213 sheet
							2 of 3

Pro/E

cage code 22526

Tous droits strictement réservés. Reproduction ou communication à des tiers interdite sous quelque forme que ce soit sans autorisation écrite du propriétaire. Propriété de FCI. Droits de reproduction FCI.

All rights strictly reserved. Reproduction or issue to third parties in any form whatever is not permitted without written authority from the proprietor. Property of FCI. Copyright FCI.

PRODUCT NUMBER
51963-023-
NOTE 3

NOTES:

1. DIMENSIONS AND TOLERANCES ARE IN ACCORDANCE WITH ASME Y14.5M, 1994 UNLESS OTHERWISE SPECIFIED.

CONNECTOR NOTES:

- ② HOUSING MATERIAL: UL 94 V-0 GLASS FILLED HIGH-TEMP THERMOPLASTIC
POWER CONTACT MATERIAL: COPPER ALLOY
SIGNAL PIN MATERIAL: COPPER ALLOY
- 3. PLATING:
51963-023 ,51963-023LF PLATING SPEC. WAS SHOWN IN THE PRINT OF 10064183.

④ MANUFACTURER'S NAME, P/N, AND DATE CODE TO APPEAR ON THIS SURFACE.

5. PRODUCT SPECIFICATION GS-12-149.
APPLICATION SPECIFICATION BUS-20-067.

6. PACKAGED IN TRAYS.

PCB NOTES:

- 7. ALL HOLE DIAMETERS ARE FINISHED HOLE SIZE.
- 8. MOUNTING HOLES, WHERE APPLICABLE, ARE UNPLATED.

⑨ $\varnothing 1.151 \pm 0.025$ DRILLED HOLES PLATED WITH 0.008 MIN SnPb OR Sn OVER .001 (.03) TO 0.08 Cu PLATING TO ACHIEVE $\varnothing 1.02 \pm .07$ HOLE.

⑩ "DIM XXX" TO BE DETERMINED BY THE CUSTOMER.

⑪ CONNECTOR KEEP-OUT ZONE.

mat'l code				tolerances unless otherwise specified		CUSTOMER		FCI	
ltr	ecm no.	dr	date			COPY	www.fciconnect.com		
A				linear	0 .X ± 0.3	projection		title 4P	
					0 .XX ± 0.13			VERTICAL SOLDER HEADER	
				angles	0 .XXX ± 0.050			product family PwrBlade code	
				dr	0° ± 2°	scale		size 213	
				engr	JM Guo 07/23/07	1:1		dwg no 51963-023 sheet	
				chr	Jerome Chen 07/23/07			3 of 3	
				oppd	Gary Hsieh 07/23/07				
					Joseph Hsia 07/23/07				
sheet index	revision sheet							cage code 22526	