

Excellent Integrated System Limited

Stocking Distributor

Click to view price, real time Inventory, Delivery & Lifecycle Information:

[FCI](#)

[51963-040LF](#)

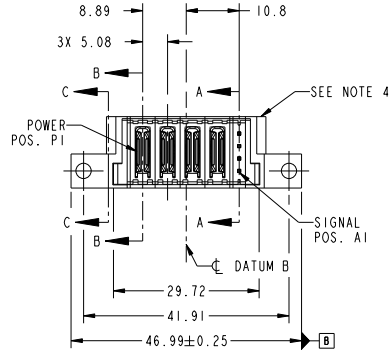
For any questions, you can email us directly:

sales@integrated-circuit.com

Tous droits strictement réservés. Reproduction ou communication à des tiers interdite sous quelque forme que ce soit sans autorisation écrite du propriétaire. Propriété de E.F.C.I. Droits de reproduction F.C.I.

All rights strictly reserved. Reproduction or issue to third parties in any form whatever is not permitted without written authority from the proprietor. Property of F.C.I. Copyright F.C.I.

PRODUCT NO.	ROWS	POWER				SIG	E2
		E1	P1	P2	P3	P4	
51963-040- NOTE ③	D C B A	○	PC	PC	PC	PC	○



CODE	DIM "M" MATING LENGTH	CONTACT TYPE
PC	[N/A]	POWER
G	[6.86]	SIGNAL
HA	[N/A]	HOLD-DOWN

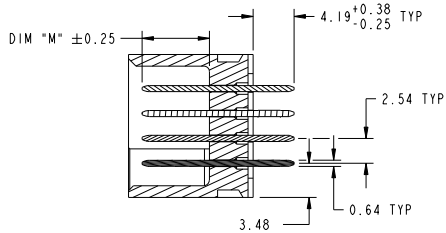
mat'l code				tolerances unless otherwise specified				CUSTOMER		FCI	
ltr	ecm no.	dr	date	linear	0.X ±0.5	COPY		www.fciconnect.com		title	
A	DC09-0214	WD	07/03/09	linear	0.XX ±0.25	projection	MM	4P + 4S		VERTICAL PRESS-FIT HEADER	
				angles	0.XXX ±0.1	MM	MM	product family		PwrBlade	
				dr	0° ±2°	scale	1:1	size		code	
				enr	Warren Du 06/28/09			dwg no		213	
				chr	Warren Du 07/03/09			51963-040		sheet	
				oppd	PM ZHENG 06/28/09			A		1 of 4	
					JOSEPH HSTA 06/28/09						
sheet index	revision sheet	A	A	A	A						
		1	2	3	4						

cage code 22526

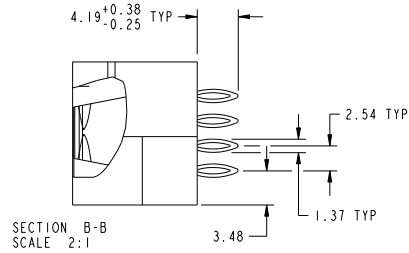
Tous droits strictement réservés. Reproduction ou communication à des tiers interdite sous quelque forme que ce soit sans autorisation écrite du propriétaire. Propriété de FCI. Droits de reproduction FCI.

All rights strictly reserved. Reproduction or issue to third parties in any form whatever is not permitted without written authority from the proprietor. Property of FCI. Copyright FCI.

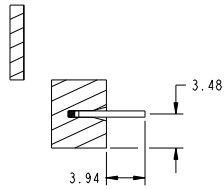
PRODUCT NUMBER
51963-040__
NOTE 3



SECTION A-A
SCALE 2:1



SECTION B-B
SCALE 2:1



SECTION C-C
SCALE 2:1

mat'l code				tolerances unless otherwise specified		CUSTOMER		FCI	
ltr	ecm no.	dr	date	linear	0.X ±0.5	COPY		www.fciconnect.com	
A					0.XX ±0.25	projection	title		
				angles	0.XXX ±0.1		4P + 4S		
				dr	0° ±2°		VERTICAL PRESS-FIT HEADER		
				enr	Warren Du 06/28/09	scale	product family	PwrBlade	code
				chr	Warren Du 07/03/09	1:1	size	dwg no	213
				oppd	PM ZHENG 06/28/09		A	51963-040	sheet
					JOSEPH HSTA 06/28/09				2 of 4
sheet index	revision sheet								

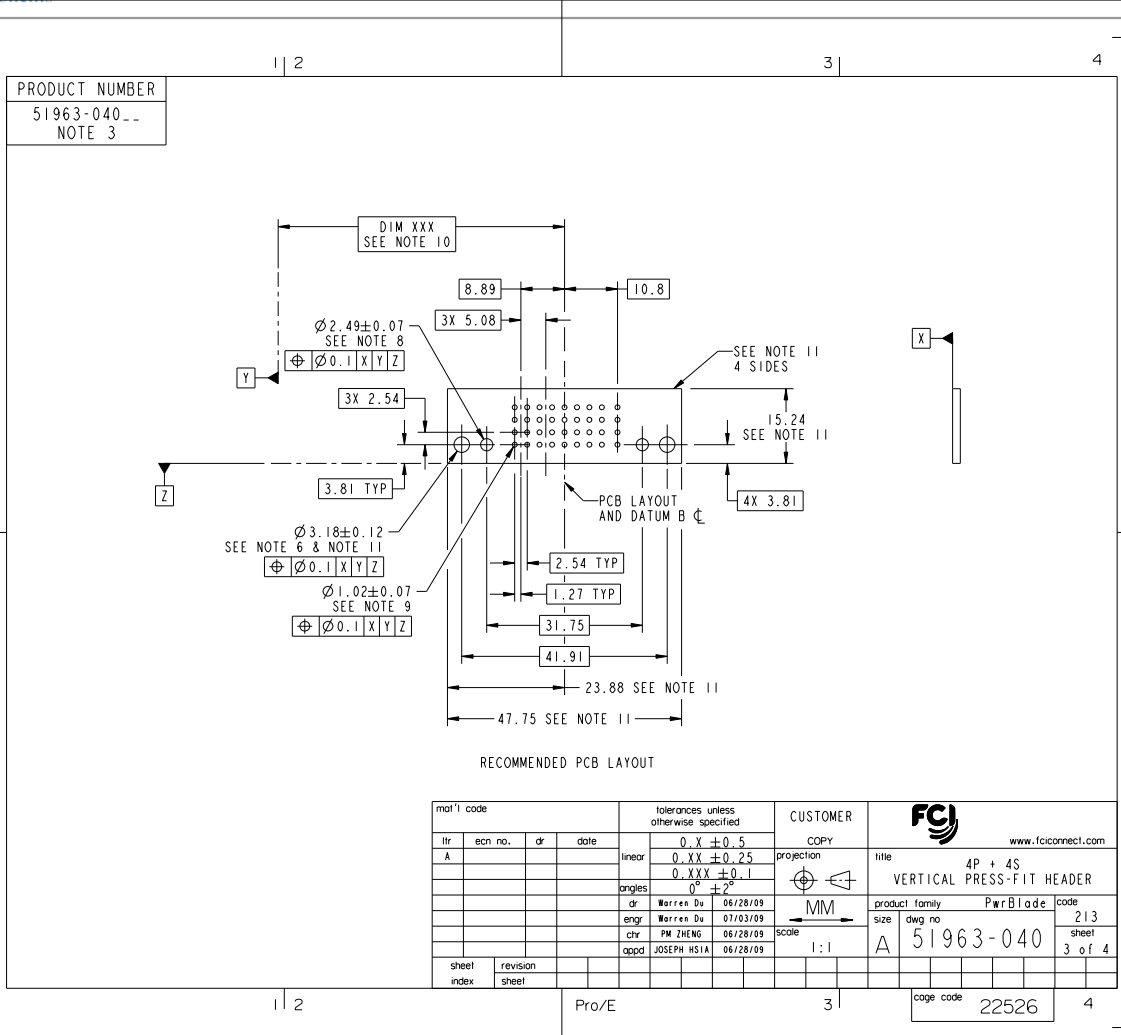
Pro/E

cage code 22526

Tous droits strictement réservés. Reproduction ou communication à des tiers interdite sous quelque forme que ce soit sans autorisation écrite du propriétaire. Propriété de FCI. Droits de reproduction FCI.



All rights strictly reserved. Reproduction or issue to third parties in any form whatever is not permitted without written authority from the proprietor. Property of FCI. Copyright FCI.



mat'l code				tolerances unless otherwise specified		CUSTOMER	
ltr	ecm no.	dr	date	linear	0 . X ± 0 . 5	COPY	www.fciconnect.com
A				angles	0 . XX ± 0 . 25	projection	4P + 4S
					0 . XXX ± 0 . 1		VERTICAL PRESS-FIT HEADER
				dr	0° ± 2°	MM	product family PwrBlade
				enr	Warren Du 06/28/09	scale	size
				chr	Warren Du 07/03/09	1:1	dwg no
				oppd	PM ZHENG 06/28/09		51963-040
sheet index	revision sheet			oppd	JOSEPH HSIA 06/28/09		code
							213
							sheet
							3 of 4
							cage code
							22526

Tous droits strictement réservés. Reproduction ou communication à des tiers interdite sous quelque forme que ce soit sans autorisation écrite du propriétaire. Propriété de FCI. Droits de reproduction FCI.



All rights strictly reserved. Reproduction or issue to third parties in any form whatever is not permitted without written authority from the proprietor. Property of FCI. Copyright FCI.

PRODUCT NUMBER
51963-040_-
NOTE 3

NOTES:

1. DIMENSIONS AND TOLERANCES ARE IN ACCORDANCE WITH ASME Y14.5M, 1994 UNLESS OTHERWISE SPECIFIED.

CONNECTOR NOTES:

- ② HOUSING MATERIAL: UL 94 V-0 GLASS FILLED HIGH-TEMP THERMOPLASTIC
POWER CONTACT MATERIAL: COPPER ALLOY
SIGNAL PIN MATERIAL: COPPER ALLOY
 - 3. SEE ITEM 3 & 4 IN PRINT 10064183 FOR PLATING SPEC OF 51963-040 AND 51963-040LF RESPECTIVELY.
 - ④ MANUFACTURER'S NAME, P/N, AND DATE CODE TO APPEAR ON THIS SURFACE.
 - 5. PRODUCT SPECIFICATION GS-12-149.
APPLICATION SPECIFICATION BUS-20-067.
 - 6. PACKAGED IN TRAYS.
- PCB NOTES:
- 7. ALL HOLE DIAMETERS ARE FINISHED HOLE SIZE.
 - 8. MOUNTING HOLES, WHERE APPLICABLE, ARE UNPLATED.

- ⑨ $\varnothing 1.151 \pm 0.025$ DRILLED HOLES PLATED WITH 0.008 MIN SnPb OR Sn OVER .001 (0.03) TO 0.08 Cu PLATING TO ACHIEVE $\varnothing 1.02 \pm .07$ HOLE.
- ⑩ "DIM XXX" TO BE DETERMINED BY THE CUSTOMER.
- ⑪ CONNECTOR KEEP-OUT ZONE.
- 12. FOR PRESS FIT APPLICATION USE FCI CAM TOOL 430169-XXX.

mat'l code				tolerances unless otherwise specified		CUSTOMER		FCI	
ltr	ecm no.	dr	date	linear	0.X ± 0.5	COPY		www.fciconnect.com	
A				linear	0.XX ± 0.25	projection	title		4P + 4S
				angles	0.XXX ± 0.1		VERTICAL PRESS-FIT HEADER		
				dr	0° ± 2°		product family	PwrBlade	code
				engr	Warren Du 06/28/09	scale	size	dwg no	213
				chr	PM ZHENG 06/28/09	1:1	A	51963-040	sheet
				oppd	JOSEPH HSTA 06/28/09				4 of 4
sheet index	revision sheet								

Pro/E

cage code 22526