

Excellent Integrated System Limited

Stocking Distributor

Click to view price, real time Inventory, Delivery & Lifecycle Information:

[FCI](#)

[51963-043LF](#)

For any questions, you can email us directly:

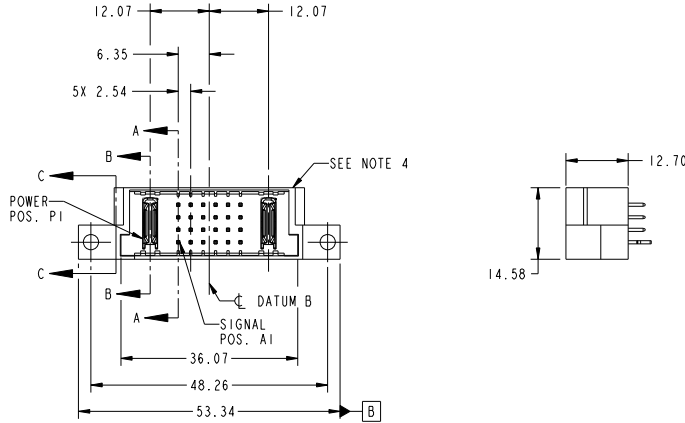
sales@integrated-circuit.com

Tous droits strictement réservés. Reproduction ou communication à des tiers interdite sous quelque forme que ce soit sans autorisation écrite du propriétaire. Propriété de FCI. Droits de reproduction FCI.



All rights strictly reserved. Reproduction or issue to third parties in any form whatever is not permitted without written authority from the proprietor. Property of FCI. Copyright FCI.

PRODUCT NO.	ROWS	PWR		SIGNAL				PWR			
		E1	P1	1	2	3	4	5	6	P2	E2
51963-043-- NOTE ①	D C B A	HA	PA	1	2	3	4	5	6	PA	HA



CODE	DIM "M" MATING LENGTH	CONTACT TYPE
E	[6.86]	SIGNAL
PA	[N/A]	POWER
HA	[N/A]	HOLD-DOWN

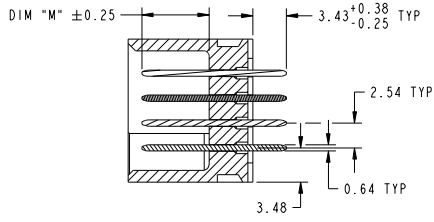
mat'l code				SEE NOTE 2	tolerances unless otherwise specified	CUSTOMER	FCI	
ltr	ecm no.	dr	date	linear	0.X ±0.50	COPY	www.fciconnect.com	
A	DG09-0320	JC	21-Oct-09		0.XX ±0.25	projection		
				angles	0.XXX ±0.10			
				dr	0° ±2°	MM		
				engr	Jerome Chen 25-Sep-09	scale		
				chr	Jerome Chen 25-Sep-09	1:1		
				oppd	PM Zheeng 25-Sep-09			
					Joseph Hsiao 25-Sep-09			
sheet index	revision sheet	A 1	A 2	A 3	A 4			
							product family	PwrBlade
							size	A
							dwg no	51963-043
							code	213
							sheet	1 of 4
							cage code	22526

Tous droits strictement réservés. Reproduction ou communication à des tiers interdite sous quelque forme que ce soit sans autorisation écrite du propriétaire. Propriété de FCI. Droits de reproduction FCI.

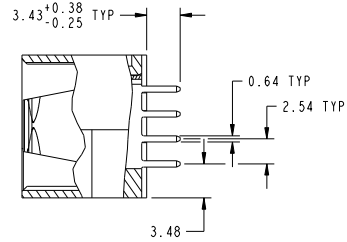
All rights strictly reserved. Reproduction or issue to third parties in any form whatever is not permitted without written authority from the proprietor. Property of FCI. Copyright FCI.



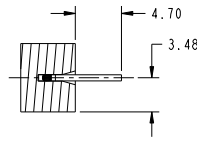
PRODUCT NUMBER
51963-043
NOTE ③



SECTION A-A
SCALE 2:1



SECTION B-B
SCALE 2:1



SECTION C-C
SCALE 2:1

mat'l code		SEE NOTE 2		tolerances unless otherwise specified		CUSTOMER		FCI	
ltr	ecm no.	dr	date	linear	0.X ±0.50	projection	COPY	www.fciconnect.com	
A					0.XX ±0.25			title	
				angles	0° ±2°			IP + 24S + 1P	
		dr	Jerome Chen	25-Sep-09		scale		VERTICAL SOLDER HEADER	
		enr	Jerome Chen	25-Sep-09		1:1		product family	
		chr	PM Zheeng	25-Sep-09				PwrBlade	
		oppd	Joseph Hsiao	25-Sep-09				code	
sheet index	revision sheet							size	code
								A	213
								51963-043	sheet
									2 of 4
								cage code	4
								22526	

Pro/E

PDM: Rev:A

STATUS: Released

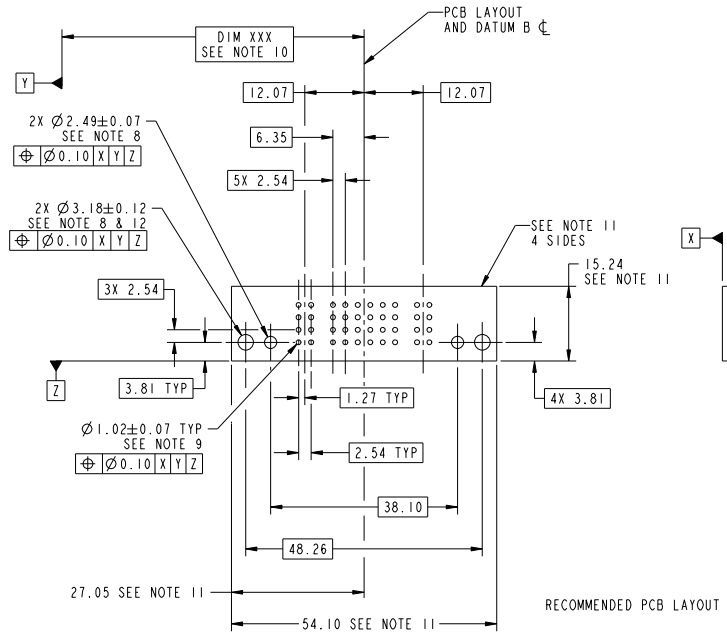
Printed: Dec 20, 2010

Tous droits strictement réservés. Reproduction ou communication à des tiers interdite sous quelque forme que ce soit sans autorisation écrite du propriétaire. Propriété de FCI. Droits de reproduction FCI.



All rights strictly reserved. Reproduction or issue to third parties in any form whatever is not permitted without written authority from the proprietor. Property of FCI. Copyright FCI.

PRODUCT NUMBER
51963-043
NOTE ③



mat'l code		SEE NOTE 2	tolerances unless otherwise specified	CUSTOMER	FCI
ltr	ecm no.	dr	date	COPY	www.fciconnect.com
A				projection	title
				linear	IP + 24S + 1P
				angles	VERTICAL SOLDER HEADER
				dr Jerome Chen 25-Sep-09	product family PwrBlade
				engr Jerome Chen 25-Sep-09	code
				chr PM Zheeng 25-Sep-09	size
				oppd Joseph Hsiao 25-Sep-09	dwg no
				scale 1:1	51963-043
sheet index	revision sheet				code
					22526
					213 sheet
					3 of 4

Tous droits strictement réservés. Reproduction ou communication à des tiers interdite sous quelque forme que ce soit sans autorisation écrite du propriétaire. Propriété de FCI. Droits de reproduction FCI.

All rights strictly reserved. Reproduction or issue to third parties in any form whatever is not permitted without written authority from the proprietor. Property of FCI. Copyright FCI.

PRODUCT NUMBER
51963-043--
NOTE ③

NOTES:

1. DIMENSIONS AND TOLERANCES ARE IN ACCORDANCE WITH ASME Y14.5M, 1994 UNLESS OTHERWISE SPECIFIED.

CONNECTOR NOTES:

- ② HOUSING MATERIAL: UL 94 V-0 GLASS FILLED HIGH-TEMP THERMOPLASTIC
POWER CONTACT MATERIAL: COPPER ALLOY
SIGNAL PIN MATERIAL: COPPER ALLOY
 - 3. SEE ITEM 1 & 2 IN PRINT 10064183 FOR PLATING SPEC OF 51963-043 AND 51963-043LF RESPECTIVELY
 - 4. MANUFACTURER'S NAME, DATE CODE AND OPTIONAL P/N TO APPEAR ON THIS SURFACE. THE P/N CAN BE OMITTED IF THERE IS NOT ENOUGH SPACE ON THIS SURFACE.
 - 5. PRODUCT SPECIFICATION GS-12-149.
APPLICATION SPECIFICATION BUS-20-067.
 - 6. PACKAGED IN TRAYS.
- PCB NOTES:
- 7. ALL HOLE DIAMETERS ARE FINISHED HOLE SIZE.
 - 8. MOUNTING HOLES, WHERE APPLICABLE, ARE UNPLATED.
 - 9. $\varnothing 1.151 \pm 0.025$ DRILLED HOLES PLATED WITH 0.008 MIN SnPb OVER 0.03 TO 0.08 Cu PLATING TO ACHIEVE $\varnothing 1.02 \pm 0.07$ HOLE.
 - 10. "DIM XXX" TO BE DETERMINED BY THE CUSTOMER.
 - 11. CONNECTOR KEEP-OUT ZONE.
 - 12. CUSTOMER SUPPLIES (2) #4-40 UNC SCREWS, HARDWARE TO MOUNT HEADER TO PC BOARD.

mat'l code		SEE NOTE 2		tolerances unless otherwise specified		CUSTOMER		FCI		www.fciconnect.com	
ltr	ecm no.	dr	date	linear	0.X ±0.50	projection	COPY	title	IP + 24S + 1P		
A					0.XX ±0.25			VERTICAL SOLDER HEADER			
				angles	0° ±2°			product family	PwrBlade	code	
		dr	Jerome Chen	25-Sep-09		scale	1:1	size	dwg no	213	sheet
		engr	Jerome Chen	25-Sep-09				A	51963-043	4 of 4	
		chr	PM Zheeng	25-Sep-09							
		oppd	Joseph Hsiao	25-Sep-09							
sheet index	revision sheet										

Pro/E

cage code 22526