

## **Excellent Integrated System Limited**

Stocking Distributor

Click to view price, real time Inventory, Delivery & Lifecycle Information:

[FCI](#)

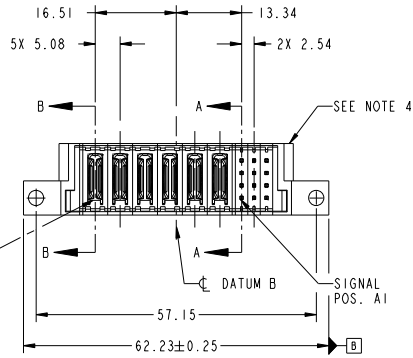
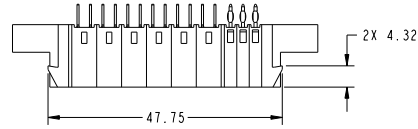
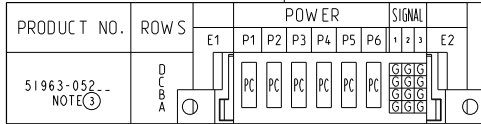
[51963-052LF](#)

For any questions, you can email us directly:

[sales@integrated-circuit.com](mailto:sales@integrated-circuit.com)

Tous droits strictement réservés. Reproduction ou communication à des tiers interdite sous quelque forme que ce soit sans autorisation écrite du propriétaire. Propriété de FCI. Droits de reproduction FCI.

All rights strictly reserved. Reproduction or issue to third parties in any form whatever is not permitted without written authority from the proprietor. Property of FCI. Copyright FCI.



| CODE | DIM "M" MATING LENGTH | CONTACT TYPE |
|------|-----------------------|--------------|
| PC   | [N/A]                 | POWER        |
| G    | [6.86]                | SIGNAL       |

|             |                |    |         |                                       |                     |            |  |                    |  |                           |  |
|-------------|----------------|----|---------|---------------------------------------|---------------------|------------|--|--------------------|--|---------------------------|--|
| mat'l code  |                |    |         | tolerances unless otherwise specified |                     |            |  | CUSTOMER           |  | FCI                       |  |
| lfr         | ecm no.        | dr | date    | linear                                | 0.X ±0.5            | COPY       |  | www.fciconnect.com |  | title                     |  |
| A           | DG10-0030      | WL | 1/21/10 | linear                                | 0.XX ±0.25          | projection |  | 6P + 12S           |  | VERTICAL PRESS FIT HEADER |  |
|             |                |    |         | angles                                | 0.XXX ±0.1          | MM         |  | product family     |  | PwrBlade                  |  |
|             |                |    |         | dr                                    | 0° ±2°              | scale      |  | size               |  | code                      |  |
|             |                |    |         | enr                                   | WL ZHANG 1/21/10    | 1:1        |  | dwg no             |  | 213                       |  |
|             |                |    |         | chr                                   | JEROME CHEN 1/21/10 |            |  | 51963-052          |  | sheet                     |  |
|             |                |    |         | oppd                                  | PW ZHENG 1/21/10    |            |  |                    |  | 1 of 4                    |  |
| sheet index | revision sheet | A  | A       | A                                     | A                   |            |  |                    |  |                           |  |
|             |                | 1  | 2       | 3                                     | 4                   |            |  |                    |  |                           |  |

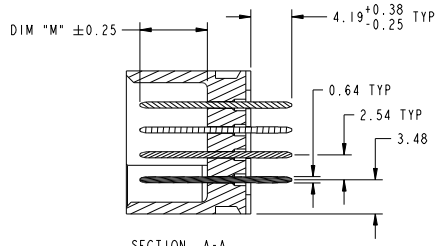
cage code 22526

Tous droits strictement réservés. Reproduction ou communication à des tiers interdite sous quelque forme que ce soit sans autorisation écrite du propriétaire. Propriété de FCI. Droits de reproduction FCI.

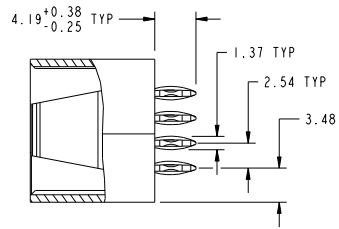
All rights strictly reserved. Reproduction or issue to third parties in any form whatever is not permitted without written authority from the proprietor. Property of FCI. Copyright FCI.



PRODUCT NUMBER  
51963-052...  
NOTE 3



SECTION A-A  
SCALE 2:1



SECTION B-B  
SCALE 2:1

|             |                |    |      |                                       |                     |            |      |          |                           |           |          |                    |  |
|-------------|----------------|----|------|---------------------------------------|---------------------|------------|------|----------|---------------------------|-----------|----------|--------------------|--|
| mat'l code  |                |    |      | tolerances unless otherwise specified |                     |            |      | CUSTOMER |                           | FCI       |          | www.fciconnect.com |  |
| ltr         | ecm no.        | dr | date | linear                                | 0.X ±0.5            | projection | COPY |          | title                     |           |          |                    |  |
| A           |                |    |      |                                       | 0.XX ±0.25          | ⊕          |      |          | 6P + 12S                  |           |          |                    |  |
|             |                |    |      | angles                                | 0.XXX ±0.1          | MM         |      |          | VERTICAL PRESS FIT HEADER |           |          |                    |  |
|             |                |    |      | dr                                    | 0° ±2°              | ←          |      |          | product family            |           | PwrBlade | code               |  |
|             |                |    |      | enr                                   | WL ZHANG 1/21/10    | scale      | 1:1  |          | size                      |           | dwg no   | 213                |  |
|             |                |    |      | chr                                   | JEROME CHEN 1/21/10 |            |      | A        |                           | 51963-052 |          | sheet              |  |
|             |                |    |      | oppd                                  | PM ZHENG 1/21/10    |            |      |          |                           |           |          | 2 of 4             |  |
| sheet index | revision sheet |    |      |                                       | JOSEPH HSIA 1/21/10 |            |      |          |                           |           |          |                    |  |

Pro/E

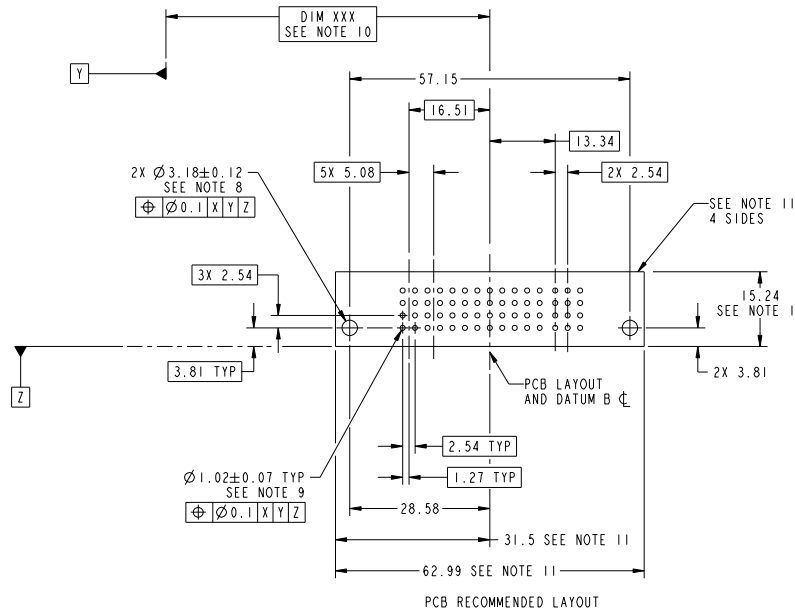
cage code 22526

Tous droits strictement réservés. Reproduction ou communication à des tiers interdite sous quelque forme que ce soit sans autorisation écrite du propriétaire. Propriété de FCI. Droits de reproduction FCI.



All rights strictly reserved. Reproduction or issue to third parties in any form whatever is not permitted without written authority from the proprietor. Property of FCI. Copyright FCI.

PRODUCT NUMBER  
51963-052...  
NOTE 3



| mat'l code  |                |    |      | tolerances unless otherwise specified |        | CUSTOMER            |            |
|-------------|----------------|----|------|---------------------------------------|--------|---------------------|------------|
| ltr         | ecm no.        | dr | date | 0.X ± 0.5                             | linear | 0.XX ± 0.25         | projection |
| A           |                |    |      | 0.XXX ± 0.1                           | angles | 0° ± 2°             | MM         |
|             |                |    |      |                                       | dr     | WL ZHANG 1/21/10    | scale      |
|             |                |    |      |                                       | enrg   | JEROME CHEN 1/21/10 | 1:1        |
|             |                |    |      |                                       | chr    | PM ZHENG 1/21/10    |            |
|             |                |    |      |                                       | oppd   | JOSEPH HSIA 1/21/10 |            |
| sheet index | revision sheet |    |      |                                       |        |                     |            |

| CUSTOMER                  |        | FCI                |           |
|---------------------------|--------|--------------------|-----------|
| COPY                      |        | www.fciconnect.com |           |
| title                     |        | 6P + 12S           |           |
| VERTICAL PRESS FIT HEADER |        | PwrBlade           |           |
| product family            | code   | size               | dwg no    |
| PwrBlade                  | 213    | A                  | 51963-052 |
|                           | sheet  |                    |           |
|                           | 3 of 4 |                    |           |
| cage code                 |        | 22526              |           |

Tous droits strictement réservés. Reproduction ou communication à des tiers interdite sous quelque forme que ce soit sans autorisation écrite du propriétaire. Propriété de FCI. Droits de reproduction FCI.

All rights strictly reserved. Reproduction or issue to third parties in any form whatever is not permitted without written authority from the proprietor. Property of FCI. Copyright FCI.

**PRODUCT NUMBER**  
51963-052\_  
NOTE 3

**NOTES:**

1. DIMENSIONS AND TOLERANCES ARE IN ACCORDANCE WITH ASME Y14.5M, 1994 UNLESS OTHERWISE SPECIFIED.

**CONNECTOR NOTES:**

- ② HOUSING MATERIAL: UL 94 V-0 GLASS FILLED HIGH-TEMP THERMOPLASTIC  
POWER CONTACT MATERIAL: COPPER ALLOY  
SIGNAL PIN MATERIAL: COPPER ALLOY
- 3. PLATING:  
SEE ITEM 3 & 4 IN PRINT 10064183 FOR PLATING SPEC OF 51963-052; 51963-052LF PRESPECTIVELY
- ④ MANUFACTURER'S NAME, DATE CODE AND OPTIONAL P/N TO APPEAR ON THIS SURFACE. THE P/N CAN BE OMITTED IF THERE IS NOT ENOUGH SPACE ON THIS SURFACE.
- 5. PRODUCT SPECIFICATION GS-12-149.  
APPLICATION SPECIFICATION BUS-20-067.
- 6. PACKAGED IN TRAYS.  
**PCB NOTES:**
- 7. ALL HOLE DIAMETERS ARE FINISHED HOLE SIZE.
- 8. MOUNTING HOLES, WHERE APPLICABLE, ARE UNPLATED.
- ⑨  $\varnothing 1.151 \pm 0.025$  DRILLED HOLES PLATED WITH 0.008 MIN SnPb OR Sn OVER .001 [0.03] TO 0.08 Cu PLATING TO ACHIEVE  $\varnothing 1.02 \pm 0.07$  HOLE.
- ⑩ "DIM XXX" TO BE DETERMINED BY THE CUSTOMER.
- ⑪ CONNECTOR KEEP-OUT ZONE.
- 12. FOR PRESS FIT APPLICATION USE FCI CAM TOOL 430169-XXX.

| mat'l code  |                |    |      | tolerances unless otherwise specified |                     | CUSTOMER       |                           | FCI                |  |
|-------------|----------------|----|------|---------------------------------------|---------------------|----------------|---------------------------|--------------------|--|
| ltr         | ecm no.        | dr | date | linear                                | 0.X ± 0.5           | COPY           |                           | www.fciconnect.com |  |
| A           |                |    |      |                                       | 0.XX ± 0.25         | projection     | title                     |                    |  |
|             |                |    |      | angles                                | 0.XXX ± 0.1         |                | 6P + 12S                  |                    |  |
|             |                |    |      | dr                                    | 0° ± 2°             | MM             | VERTICAL PRESS FIT HEADER |                    |  |
|             |                |    |      | enr                                   | WL ZHANG 1/21/10    | product family | PwrBlade                  | code               |  |
|             |                |    |      | chr                                   | JEROME CHEN 1/21/10 | size           | dwg no                    | 213                |  |
|             |                |    |      | oppd                                  | PM ZHENG 1/21/10    | scale          | 51963-052                 | 4 of 4             |  |
|             |                |    |      |                                       | JOSEPH HSIA 1/21/10 | 1:1            |                           |                    |  |
| sheet index | revision sheet |    |      |                                       |                     |                |                           |                    |  |

cage code 22526