

## Excellent Integrated System Limited

Stocking Distributor

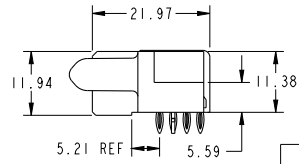
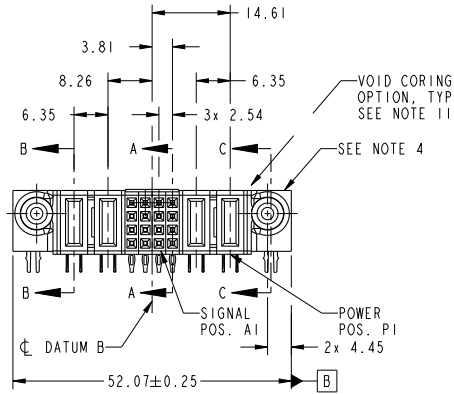
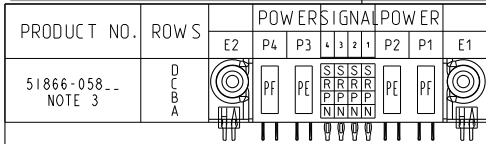
Click to view price, real time Inventory, Delivery & Lifecycle Information:

[FCI](#)

[51866-058LF](#)

For any questions, you can email us directly:

[sales@integrated-circuit.com](mailto:sales@integrated-circuit.com)



CODE	DIM "M" MATING LENGTH	CONTACT TYPE
PF	[ 2.34 ]	POWER
PE	[ 1.07 ]	POWER
S	[ N/A ]	SIGNAL
R	[ N/A ]	SIGNAL
P	[ N/A ]	SIGNAL
N	[ N/A ]	SIGNAL
HA	[ N/A ]	HOLD-DOWN

spec ref	SEE NOTES		dr	Luo Weller	2014/01/07	projection		size	A4	scale	1:1
tolerance std	TOLERANCES UNLESS OTHERWISE SPECIFIED		eng	Luo Weller	2014/01/25	product family	PwrBlade	ecn no	-	rel level	Released
SEE NOTES			chr	-	-						
surface	linear	0.X ±0.50	appr	Pei-Ming Zheng	2014/01/25	2P+16S+2P		www.fci.com	cat. no.	Product - Customer Drw	sheet 1 of 4
		0.XX ±0.25			R/A PRESS-FIT RECEPTACLE		51866-058				
	angular	0° ±2°									

Print File - REV C - 2009-08-09

1

2

3

PDS: Rev :A

STATUS:Released

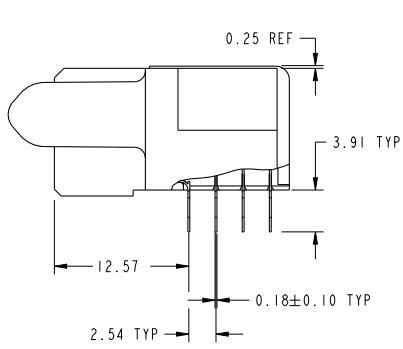
Printed: Jan 25, 2014



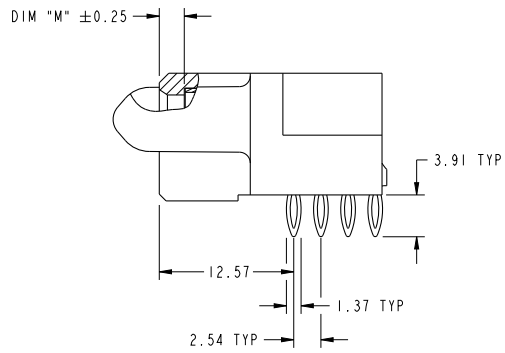
Copyright FCI.

PRODUCT NUMBER

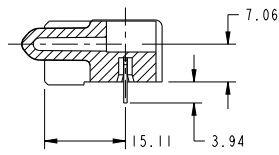
51866-058LF  
NOTE 3



BROKEN-OUT SECTION A-A  
SCALE 2:1



BROKEN-OUT SECTION B-B  
SCALE 2:1



SECTION C-C

dr	Luo Weller	2014/01/07	projection	MM	size	A4	scale	1:1
eng	Luo Weller	2014/01/25			ecn no	-		
chr	-	-			rel level	<b>Released</b>		
appr	Pei-Ming Zheng	2014/01/25	product family	PwrBlade				
	title			2P+16S+2P		dwg no	51866-058	
www.fci.com	R/A PRESS-FIT RECEPTACLE						rev	
	cat. no.	Product - Customer Drw			sheet 2 of 4			

Print File - REV C - 2009-08-09

PDS: Rev :A

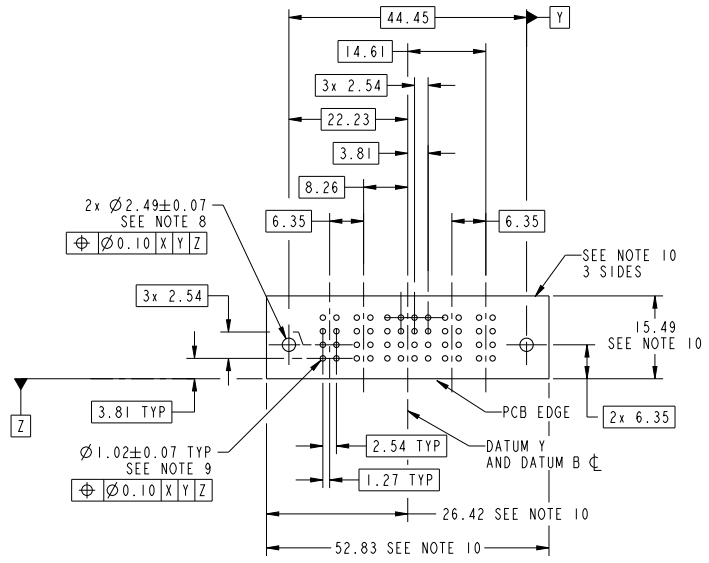
STATUS:Released

Printed: Jan 25, 2014



Copyright FCI.

PRODUCT NUMBER  
51866-058...  
NOTE 3



RECOMMENDED PCB LAYOUT

dr	Luo Weller	2014/01/07	projection	MM	size	A4	scale	1:1
eng	Luo Weller	2014/01/25			ecn no	-		
chr	-	-			rel level	Released		
appr	Pei-Ming Zheng	2014/01/25	product family	PwrBlade				
	2P+16S+2P				dwg no	51866-058		rev
www.fci.com	R/A PRESS-FIT RECEPTACLE							A
cat. no.	Product - Customer Drw						sheet 3 of 4	

Print File - REV C - 2009-08-09

**PRODUCT NUMBER**

51866-058-  
NOTE 3

**NOTES:**

1. DIMENSIONS AND TOLERANCES ARE IN ACCORDANCE WITH ASME Y14.5M, 1994 UNLESS OTHERWISE SPECIFIED.

**CONNECTOR NOTES:**

- 2. HOUSING MATERIAL: UL 94 V-0 GLASS FILLED HIGH-TEMP THERMOPLASTIC  
POWER CONTACT MATERIAL: COPPER ALLOY  
SIGNAL PIN MATERIAL: COPPER ALLOY
- 3. SEE ITEM 7 & 8 IN PRINT 10064183 FOR PLATING SPEC OF 51866-058 AND 51866-058LF RESPECTIVELY.

4. MANUFACTURER'S NAME, DATE CODE AND OPTIONAL P/N TO APPEAR ON THIS SURFACE. THE MARK CAN BE OMITTED IF THERE IS NOT ENOUGH SPACE ON THIS SURFACE.

5. PRODUCT SPECIFICATION GS-12-149.  
APPLICATION SPECIFICATION BUS-20-067.

6. PACKAGED IN TRAYS.

**PCB NOTES:**

7. ALL HOLE DIAMETERS ARE FINISHED HOLE SIZE.

8. MOUNTING HOLES, WHERE APPLICABLE, ARE UNPLATED.

9.  $\varnothing 1.151 \pm 0.025$  DRILLED HOLES PLATED WITH  
0.008 MIN SnPb OR Sn OVER 0.03  
TO 0.08 Cu PLATING TO ACHIEVE  
 $\varnothing 1.02 \pm .07$  HOLE.

10. CONNECTOR KEEP-OUT ZONE.

11. THE VOID CORING IN BETWEEN POWER MODULES, SIGNAL MODULES AND END MODULES ARE OPTIONAL AND THE SHAPE MAY BE DIFFERENT FOR OPTIMIZE THE MOLDING PROCESS. THE VOID CORING WILL NOT EFFECT TO PRODUCT FUNCTION.

dr	Luo Weller	2014/01/07	projection	MM	size	A4	scale	1:1			
eng	Luo Weller	2014/01/25			ecn no	-	rel level	Released			
chr	-	-	product family	PwrBlade							
appr	Pei-Ming Zheng	2014/01/25			rel level	Released					
		title			2P+16S+2P		dwg no		51866-058	rev	A
www.fci.com		cat. no.			Product - Customer Drw		sheet 4 of 4				

Print File - REV C - 2009-08-09



Copyright FCI.