

Excellent Integrated System Limited

Stocking Distributor

Click to view price, real time Inventory, Delivery & Lifecycle Information:

[FCI](#)

[51907-004LF](#)

For any questions, you can email us directly:

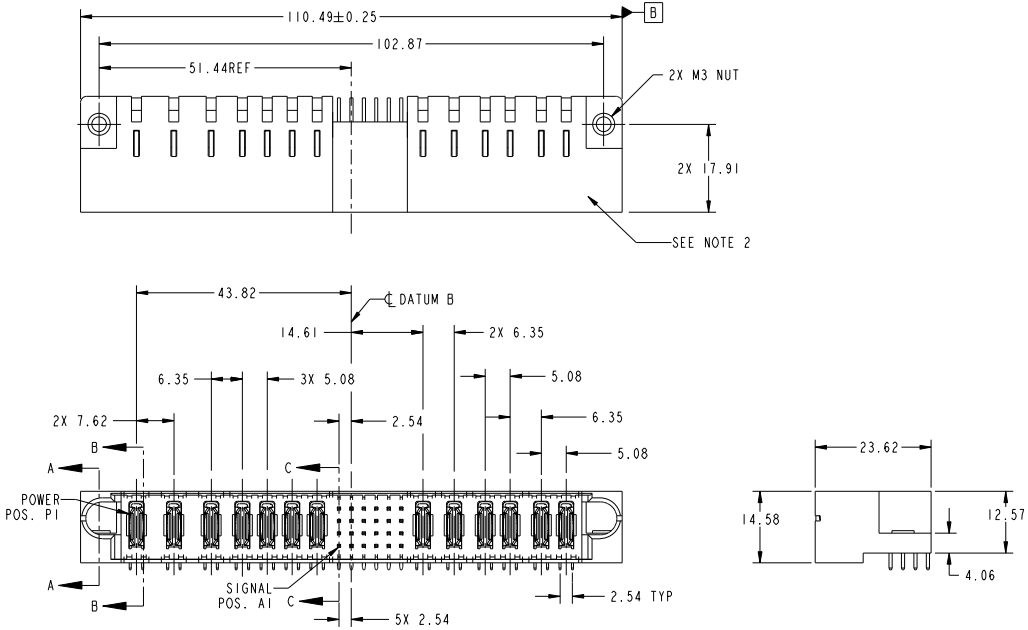
sales@integrated-circuit.com

Tous droits strictement réservés. Reproduction ou communication à des tiers interdite sous quelque forme que ce soit sans autorisation écrite du propriétaire. Propriété de FCI. Droits de reproduction FCI.



All rights strictly reserved. Reproduction or issue to third parties in any form whatever is not permitted without written authority from the proprietor. Property of FCI. Copyright FCI.

PRODUCT NUMBER
51907-004...
NOTE: 3



NOTE 1				tolerances unless otherwise specified		CUSTOMER	
ltr	ecm no.	dr	date	0.X ± 0.5	COPY		www.fciconnect.com
A	DG05-0310	BvdJM	09/02/05	0.XX ± 0.25	projection	title	
B	DG06-0005	JMG	01/06/06	0.XXX ± 0.10		3ACP+4P+24S+6P RIGHT ANGLE SOLDER HEADER	
C	DG08-0272	JW	09/28/08	0" ± 2"	INCMM MM	product family	PwrBlade
				dr	JM G++	09/02/05	code
				enrg	LUOS	09/02/05	213
				chr	VICTOR LIN	09/02/05	sheet
				oppd	JOSEPH HSTA	09/02/05	1 of 3
sheet index	revision sheet	C 1	C 2	C 3			

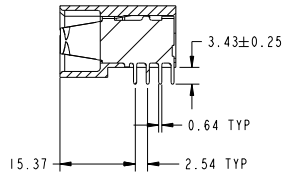
Pro/E 3 cage code 22526 4

Tous droits strictement réservés. Reproduction ou communication à des tiers interdite sous quelque forme que ce soit sans autorisation écrite du propriétaire. Propriété de FCI. Droits de reproduction FCI.

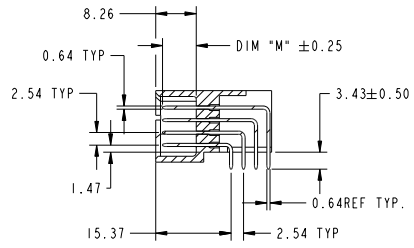
All rights strictly reserved. Reproduction or issue to third parties in any form whatever is not permitted without written authority from the proprietor. Property of FCI. Copyright FCI.



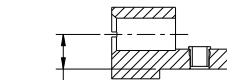
PRODUCT NUMBER
51907-004...
NOTE: 3



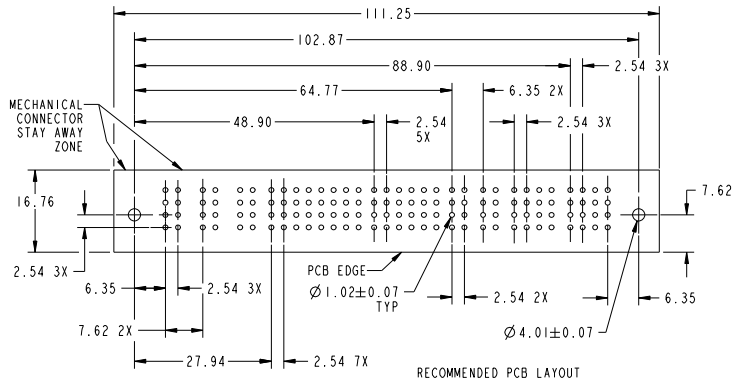
SECTION BB
SCALE 1:1



SECTION CC
SCALE 1:1



SECTION A-A



RECOMMENDED PCB LAYOUT

NOTE 1				tolerances unless otherwise specified		CUSTOMER		FCI	
ltr	ecm no.	dr	date	linear	0.1 ±0.5	COPY	www.fciconnect.com		
C					0.1X ±0.25	projection	title	3ACP+4P+24S+6P	
				angles	0.1XX ±0.10		RIGHT ANGLE SOLDER HEADER		
				dr	0° ±2°	INCH/MIL	product family	PwrBlade	code
				enr	JM G++ 09/02/05	MM	size	dwg no	213
				chr	LUOS 09/02/05	scale	A	51907-004	sheet
				oppd	VICTOR LIN 09/02/05	1:1			2
					JOSEPH HSTA 09/02/05				
sheet index	revision	sheet							

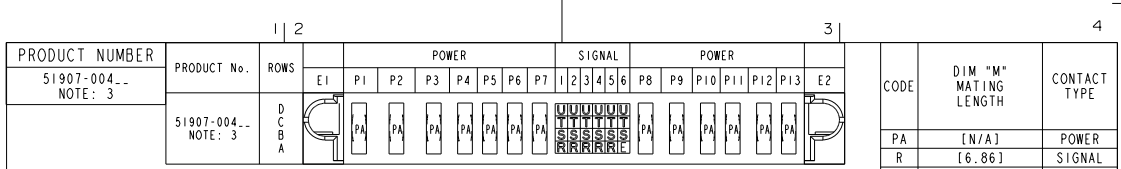
Pro/E

cage code 22526

Tous droits strictement réservés. Reproduction ou communication à des tiers interdite sous quelque forme que ce soit sans autorisation écrite du propriétaire. Property of FCI. Copyright FCI.



All rights strictly reserved. Reproduction or issue to third parties in any form whatever is not permitted without written authority from the proprietor. Property of FCI. Copyright FCI.



CONNECTOR NOTES:

- HOUSING MATERIAL: UL 94 V-0 GLASS FILLED HIGH-TEMP THERMOPLASTIC
SIGNAL PIN MATERIAL: COPPER ALLOY
POWER CONTACT MATERIAL: COPPER ALLOY
- MANUFACTURER'S NAME, P/N, AND DATE CODE TO APPEAR ON THIS SURFACE
- PLATING:
SEE ITEM 1 & 2 IN PRINT 10064183 FOR PLATING SPEC OF 51907-004; 51907-004LF PRESPECTIVELY
- PRODUCT SPECIFICATION GS-12-149 PER GS-01-001

PCB NOTES:

- ALL DIMENSIONS ARE BASIC UNLESS OTHERWISE SPECIFIED.
- ALL THROUGH HOLES ARE LOCATED WITH A TRUE POSITION OF 0.10
- ALL HOLE DIAMETERS ARE FINISHED HOLE SIZE
- Ø4.01 THROUGH HOLES ARE UNPLATED
- Ø1.151±0.025 DRILLED HOLES PLATED WITH 0.008 MIN SnPb OR Sn OVER 0.03 TO 0.08 Cu PLATING TO ACHIEVE Ø1.02±.07 HOLE.
- ▲ SYMBOL WILL BE NEXT TO ANY DIMENSION, VIEW, OR NOTE WHICH HAS BEEN MODIFIED WITH THE CURRENT DRAWING REVISION.

NOTE 1				tolerances unless otherwise specified		CUSTOMER	
ltr	ecm no.	dr	date	0.X ±0.5	COPY		www.fciconnect.com title 3ACP+4P+24S+6P RIGHT ANGLE SOLDER HEADER
C				0.XX ±0.25	projection		
				0.XXX ±0.10			
				0° ±2°	angles		
		dr	JM GEE 09/02/05		dr	JM GEE 09/02/05	product family PwrBlade code 213
		enr	LUOS 09/02/05		enr	VICTOR LIN 09/02/05	size A
		chr	VICTOR LIN 09/02/05		chr	JOSEPH HSIA 09/02/05	dwg no 51907-004
		oppd	JOSEPH HSIA 09/02/05		oppd		sheet 3
sheet index	revision	sheet					