

Excellent Integrated System Limited

Stocking Distributor

Click to view price, real time Inventory, Delivery & Lifecycle Information:

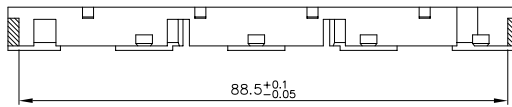
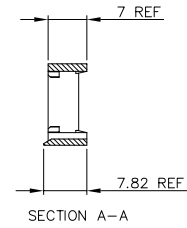
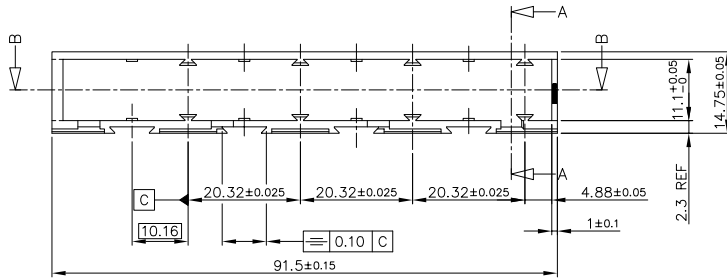
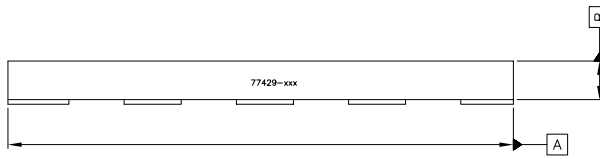
[FCI](#)

[77429-001LF](#)

For any questions, you can email us directly:

sales@integrated-circuit.com

PRODUCT NUMBER	COLOUR
77429-001	BLACK RAL 9005
77429-002	GREY RAL 7035



SECTION B-B

NOTE:

1. MATERIAL : MODIFIED POLYPHENYLENE OXIDE; FLAMMABILITY PER UL-94-V1
2. THIS PRODUCT MEETS EUROPEAN UNION DIRECTIVES AND OTHER COUNTRY REGULATIONS AS DESCRIBED IN GS-22-008.
3. LEADFREE OR RoHS DIRECTIVE LABELLING TO BE PROVIDED AS PER GS-14-920.
4. "LF" SUFFIX TO THE PRODUCT NUMBER FOR RoHS COMPATIBLE/LEADFREE VERSION.
5. PARTS WITH AND WITHOUT "LF" SUFFIX ARE FORM-FIT AND FUNCTIONALLY IDENTICAL. "LF" SUFFIX PROVIDED FOR PART NUMBER STANDARDISATION OF PART THAT MEETS RoHS REQUIREMENTS.

mat'l. code	surface	tolerance	projection	product family
SEE NOTE 1	ISO 1302	ISO 406 ISO 1101		BACKPANEL
tr ecn no dr date	tolerances unless otherwise specified			title
A H80467 LGI 1998-07-23	angles	linear	mm	REVERSE LOCKING FRAME
B F00406 LLA 2000-05-22	scale 1:1			TRIPLE ROW
C I06-0082 MINI 2006-06-01				dwg no
D I07-0021 KR 2007-02-09 dr	D.LEGRAND	2000-10-10	77429	sheet 1 of 1
	enrg J.F.NOITTEAU	2000-10-10		Size
	chr RAKHEE GEORGE	2007-02-09		A3
	appd RAKHEE GEORGE	2007-02-09		type
				Product Customer Drawing
sheet index	revision sheet	D 1		