

Excellent Integrated System Limited

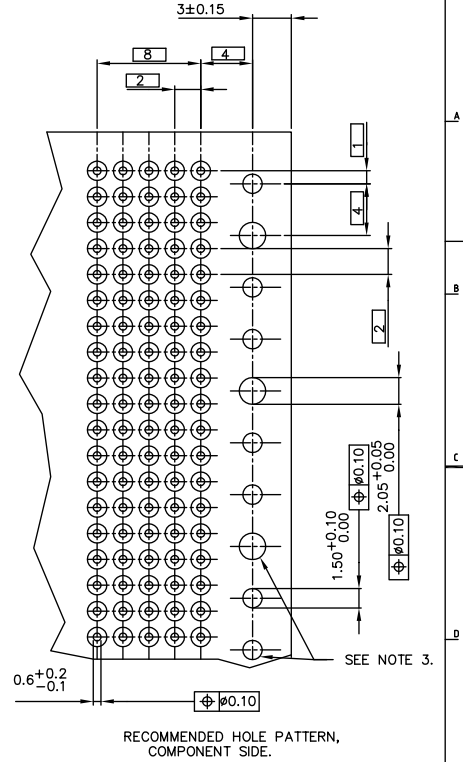
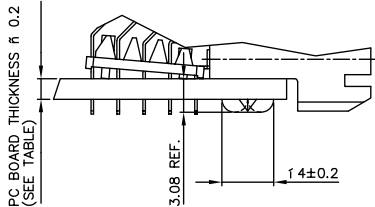
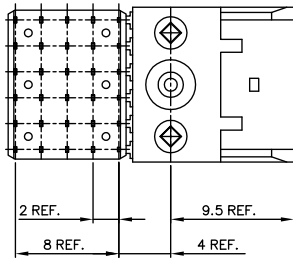
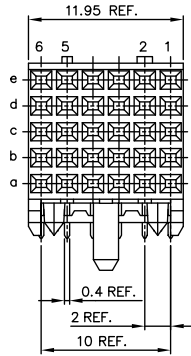
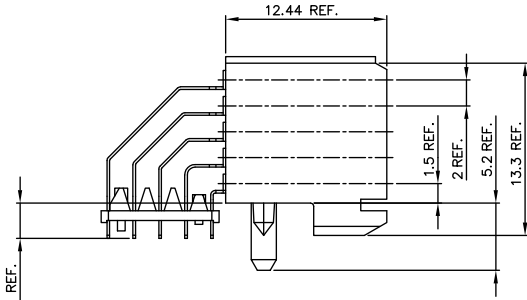
Stocking Distributor

Click to view price, real time Inventory, Delivery & Lifecycle Information:

[FCI](#)
[85693-701LF](#)

For any questions, you can email us directly:
sales@integrated-circuit.com

PC BOARD VERSIONS		
PRODUCT NR:	PCB THICKNESS	DIM "A"
85693-101LF	1.6	2.90
85693-701LF	1.6	2.90



- NOTES:
 1 BODY MAT'L: LIQUID CRYSTAL POLYMER 30% GLASS
 FLAME RETARDANT ACC. UL 94-V0
 2 TERMINAL MATERIAL: PHOSPHOR BRONZE.
 3 INDICATED HOLES ARE UNPLATED.
 4 PLATING OF SOLDER TAILS 2-8 μm
 PURE Sn FOR LEAD FREE.
 5 PRODUCTMARKING: PART NUMBER & BATCH ID.
 6 THIS PRODUCT MEETS EUROPEAN UNION DIRECTIVES AND OTHER
 COUNTRY REGULATIONS AS DESCRIBED IN GS-22-008
 7 THE HOUSING WILL WITHSTAND EXPOSURE TO 260DEGREE PEAK
 TEMPERATURE FOR 10 SECONDS IN A WAVE SOLDER APPLICATION.

RECOMMENDED HOLE PATTERN,
 COMPONENT SIDE.

PLATING CONTACT AREA:

DASH NR:	PERFORMANCE LEVEL
-1YYLF	CUSTOMER SPECIAL
-7YYLF	CUSTOMER SPECIAL

mat'l. code	tolerances unless otherwise specified	CUSTOMER COPY	FCI ELECTRONICS
ltr ecn no dr date	linear	projection	www.fciconnect.com
A 180276 008 990817		1st	RECEPT SIGNAL ASS'Y
B 3000-0001 Cst 041223		2nd	12 mm SPECIAL WAFER
C 0907-0160 Camb5/15/07 angles		mm	product famiMETRAL (tm)
D 0010-0240 Camb7/20/10dr	D. de Bt 990817	size	code
	Engl. A. Engels 990817	dwg no	213
	Chr. A. Engels 990817	scale	sheet
	GppH. Coolmans 990817	S:1	1 of 1
sheet revision D			
index sheet 1			