

Excellent Integrated System Limited

Stocking Distributor

Click to view price, real time Inventory, Delivery & Lifecycle Information:

[FCI](#)

[85698-701LF](#)

For any questions, you can email us directly:

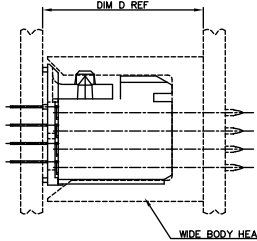
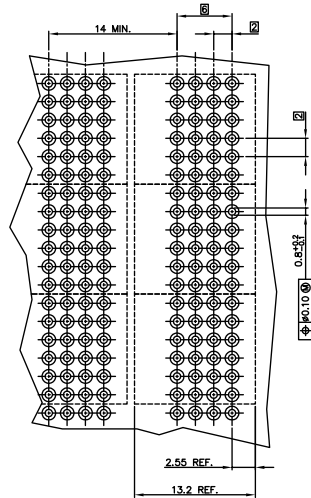
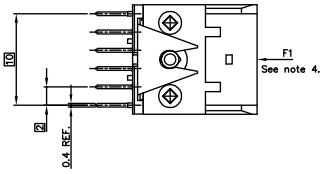
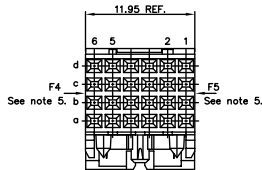
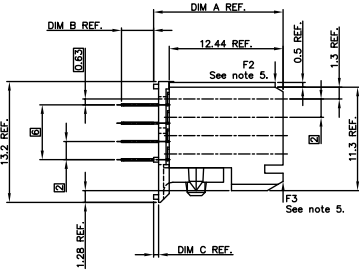
sales@integrated-circuit.com

PLATING CONTACT AREA:		ERICSSON P/N
DASH NR:	PERFORMANCE LEVEL	SEE NOTE 7
-7YYLF	CUSTOMER SPECIAL	
		RNV 604 1111/1

DASH NR	CONFIGURATION	PCB THICKN.	DIM A	DIM B	DIM C	DIM D
-X01LF	D	+	+	+	+	+
	C	+	+	+	+	+
	B	+	+	+	+	+
	A	+	+	+	+	+

2.4 14.14 3.50 0.54 17.64

+ POSITION LOADED



NOTES:

1. BODY MATL: LIQUID CRYSTAL POLYMER 30% GLASS
FLAME RETARDANT ACC. UL 94-V0
2. TERMINAL MATERIAL: PHOSPHOR BRONZE.
3. PLATING SOLDERTAILS 2-8 µm
PURE Sn FOR LEAD FREE.
4. LOAD IN THIS DIRECTION (E.G. THROUGH CODING) 30 NEWTON MAXIMUM PER CONNECTOR.
5. LOAD IN THIS DIRECTION 15 NEWTON MAXIMUM PER CONNECTOR.
6. TO ENSURE PROPER ALIGNMENT OF MULTIPLE MODULES ON A BOARD THE USE OF A FIXTURE IS RECOMMENDED.
7. PRODUCT MARKING: ERICSSON PARTNUMBER & BATCH I.D.
8. THIS PRODUCT MEETS EUROPEAN UNION DIRECTIVES AND OTHER COUNTRY REGULATIONS AS DESCRIBED IN GS-22-008
9. THE HOUSING WILL WITHSTAND EXPOSURE TO 260DEGREE PEAK TEMPERATURE FOR 10 SECONDS IN A WAVE SOLDER APPLICATION.

DATE	DESCRIPTION	BY	APPROVED	CUSTOMER COPY
11/19/08	Initial Design			
12/10/08	Design Change			
01/21/09	Design Change			
04/08/10	Design Change			
05/19/10	Design Change			
07/02/10	Design Change			
08/19/10	Design Change			
10/01/10	Design Change			
11/19/10	Design Change			
12/10/10	Design Change			

DATE	DESCRIPTION	BY	APPROVED	CUSTOMER COPY
11/19/08	Initial Design			
12/10/08	Design Change			
01/21/09	Design Change			
04/08/10	Design Change			
05/19/10	Design Change			
07/02/10	Design Change			
08/19/10	Design Change			
10/01/10	Design Change			
11/19/10	Design Change			
12/10/10	Design Change			

DATE	DESCRIPTION	BY	APPROVED	CUSTOMER COPY
11/19/08	Initial Design			
12/10/08	Design Change			
01/21/09	Design Change			
04/08/10	Design Change			
05/19/10	Design Change			
07/02/10	Design Change			
08/19/10	Design Change			
10/01/10	Design Change			
11/19/10	Design Change			
12/10/10	Design Change			

PDM: Rev:F

STATUS: Released

Printed: May 19, 2011