

Excellent Integrated System Limited

Stocking Distributor

Click to view price, real time Inventory, Delivery & Lifecycle Information:

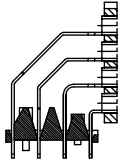
[FCI](#)

[85839-701LF](#)

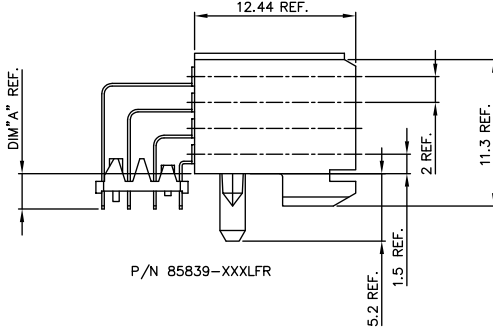
For any questions, you can email us directly:

sales@integrated-circuit.com

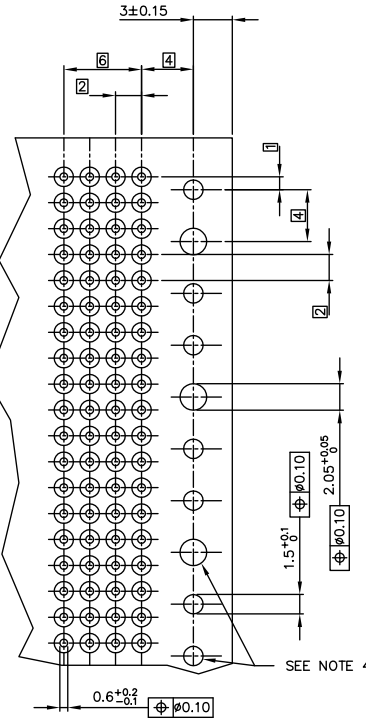
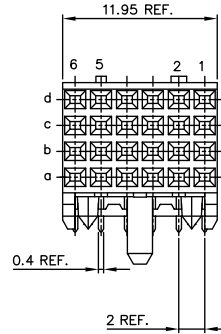
PC BOARD VERSIONS		
PRODUCTNR:	PCB THICKNESS	DIM "A"
85839-X01LF	1.6	2.90



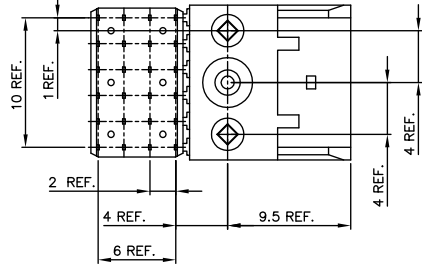
P/N 85839-XXXLF



P/N 85839-XXXLFR

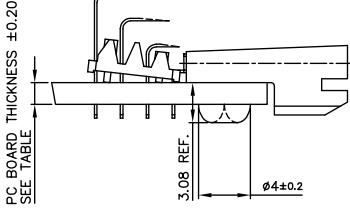


RECOMMENDED HOLE PATTERN, COMPONENT SIDE.



PRODUCT AFTER HOT RIVETING.

- NOTES:**
- 1 BODY MAT'L: LIQUID CRYSTAL POLYMER 30% GLASS
FLAME RETARDANT ACC. UL 94-V0
 - 2 TERMINAL MATERIAL: PHOSPHOR BRONZE.
 - 3 PLATING SOLDER TAILS 2-8 um
PURE Sn FOR LEAD FREE.
 - 4 INDICATED HOLES ARE UNPLATED.
 - 5 PRODUCT MARKING: PARTNUMBER & BATCH ID.
 - 6 THIS PRODUCT MEETS EUROPEAN UNION DIRECTIVES AND OTHER COUNTRY REGULATIONS AS DESCRIBED IN GS-22-008.
 - 7 THE HOUSING WILL WITHSTAND EXPOSURE TO 260DEGREE PEAK TEMPERATURE FOR 10 SECONDS IN A WAVE SOLDER APPLICATION.



PC BOARD THICKNESS ±0.20
SEE TABLE

PLATING CONTACT AREA:	
PRODUCT NR:	PERFORMANCE AREA
85839-101LF	CUSTOMER SPECIAL
85839-701LF	CUSTOMER SPECIAL

mat'l. code		tolerances unless otherwise specified		CUSTOMER COPY		FCI ELECTRONICS	
lfr	ecrn no dr date	linear		projection		www.folconnect.com	
J	0007-0168 0605/15/07					RA FEMALE SIGNAL	
K	0007-0004 0607/20/10	angles				STB 12 mm VERSION	
D	H80149 PHE 980305 dr P. Hendriks 971114	mm		product fam	METRAL(tm)	code	
E	H90671 LLA 991220 dr P. Schalk 971114	size		dwg no		213	
F	H100259 SH1 010009 dr P. Schalk 971114	scale				1 of 1	
H	0004-0104 Clu 041223 Bpp H. Coolmans 971114	S:1					
sheet	revision	K					
index	sheet	1 1					