

## Excellent Integrated System Limited

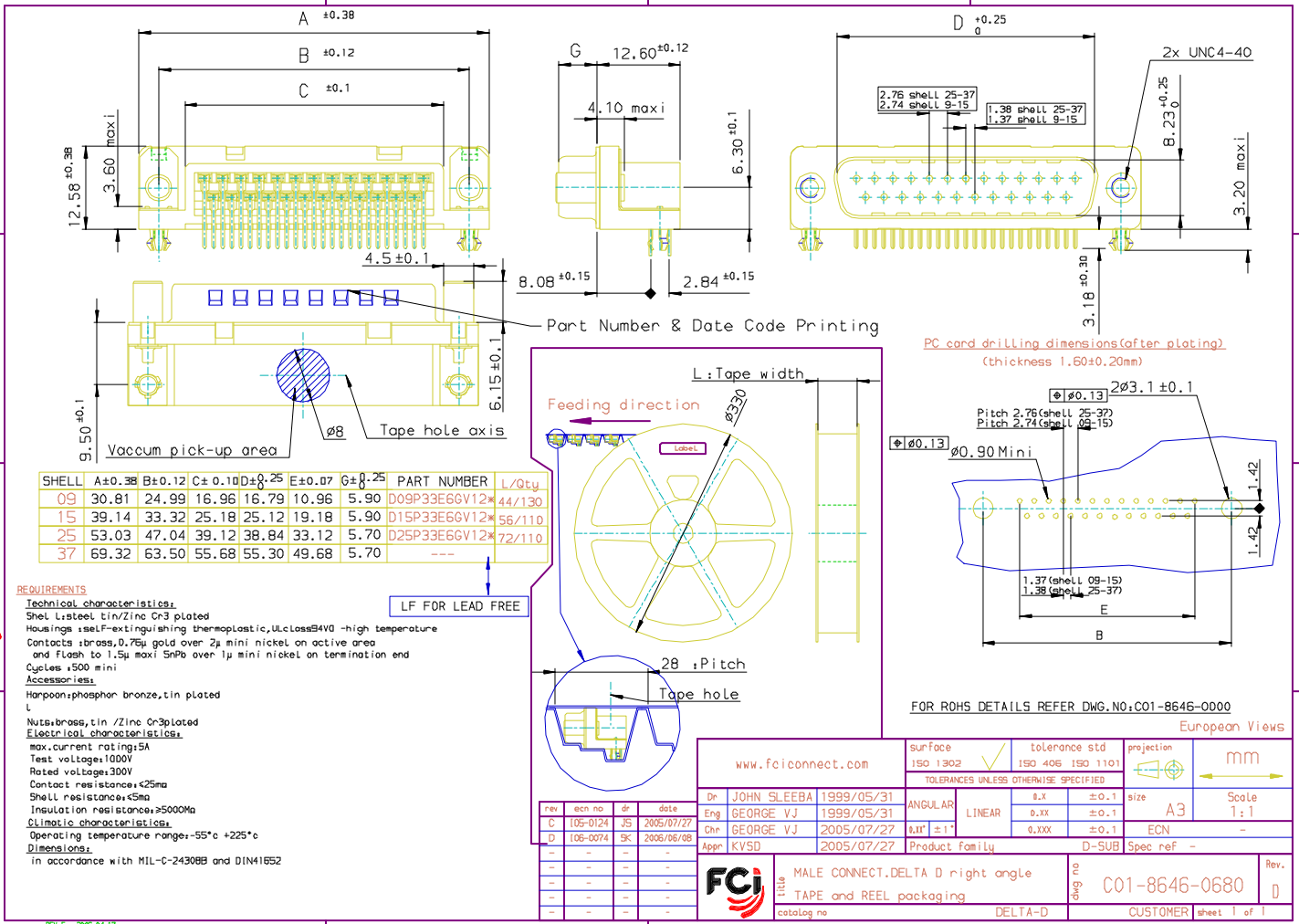
Stocking Distributor

Click to view price, real time Inventory, Delivery & Lifecycle Information:

[FCI](#)  
[D09P33E6GV12LF](#)

For any questions, you can email us directly:  
[sales@integrated-circuit.com](mailto:sales@integrated-circuit.com)

Copyright FCI

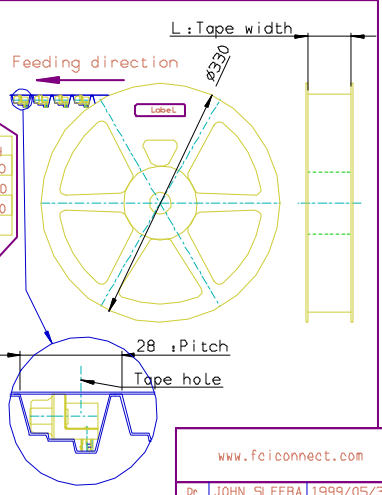


| SHELL | A ±0.38 | B ±0.12 | C ±0.1 | D ±0.25 | E ±0.07 | G ±0.25 | PART NUMBER   | L/Qty  |
|-------|---------|---------|--------|---------|---------|---------|---------------|--------|
| 09    | 30.81   | 24.99   | 16.96  | 16.79   | 10.96   | 5.90    | D09P33E6GV12* | 44/130 |
| 15    | 39.14   | 33.32   | 25.18  | 25.12   | 19.18   | 5.90    | D15P33E6GV12* | 56/110 |
| 25    | 53.03   | 47.04   | 39.12  | 38.84   | 33.12   | 5.70    | D25P33E6GV12* | 72/110 |
| 37    | 69.32   | 63.50   | 55.68  | 55.30   | 49.68   | 5.70    | ---           | ---    |

**REQUIREMENTS**

**Technical characteristics:**  
 Shell: steel tin/Zinc Cr3 plated  
 Housing: self-extinguishing thermoplastic, UL class 94V0 -high temperature  
 Contacts: brass, 0.75µ gold over 2µ mini nickel on active area  
 and flash to 1.5µ max SnPb over 1µ mini nickel on termination end  
 Cycles: 1500 mini  
**Accessories:**  
 Harpoon: phosphor bronze, tin plated  
 L: Nuts: brass, tin /Zinc Cr3 plated  
**Electrical characteristics:**  
 max. current rating: 5A  
 Test voltage: 1000V  
 Rated voltage: 300V  
 Contact resistance: <25mΩ  
 Shell resistance: <5mΩ  
 Insulation resistance: >5000MΩ  
**Climatic characteristics:**  
 Operating temperature range: -55°C +225°C  
**Dimensions:**  
 in accordance with MIL-C-24308B and DIN11652

LF FOR LEAD FREE



|                           |                         |                                       |                                   |            |               |
|---------------------------|-------------------------|---------------------------------------|-----------------------------------|------------|---------------|
| www.fciconnect.com        |                         | surface<br>ISO 1302                   | tolerance std<br>ISO 406 ISO 1101 | projection | mm            |
|                           |                         | TOLERANCES UNLESS OTHERWISE SPECIFIED |                                   | ← ⊕ →      |               |
| Dr JOHN SLEEBA 1999/05/31 | ANGULAR                 | Ø.X                                   | ±0.1                              | size       | Scale 1:1     |
| Eng GEORGE VJ 1999/05/31  | LINEAR                  | Ø.XX                                  | ±0.1                              | A3         |               |
| Chr GEORGE VJ 2005/07/27  | MIN ±1                  | Ø.XXX                                 | ±0.1                              | ECN        | -             |
| Appr KVSD 2005/07/27      | Product family          | D-SUB                                 |                                   | Spec ref   | -             |
| <b>FCI</b>                | Title                   | MALE CONNECT.DELTA D right angle      |                                   | dwg no     | C01-8646-0680 |
|                           | TAPE and REEL packaging |                                       |                                   | Rev.       | D             |
|                           | catalog no              | DELTA-D                               | CUSTOMER                          | sheet      | 1 of 1        |

REV F - 2006-04-17