

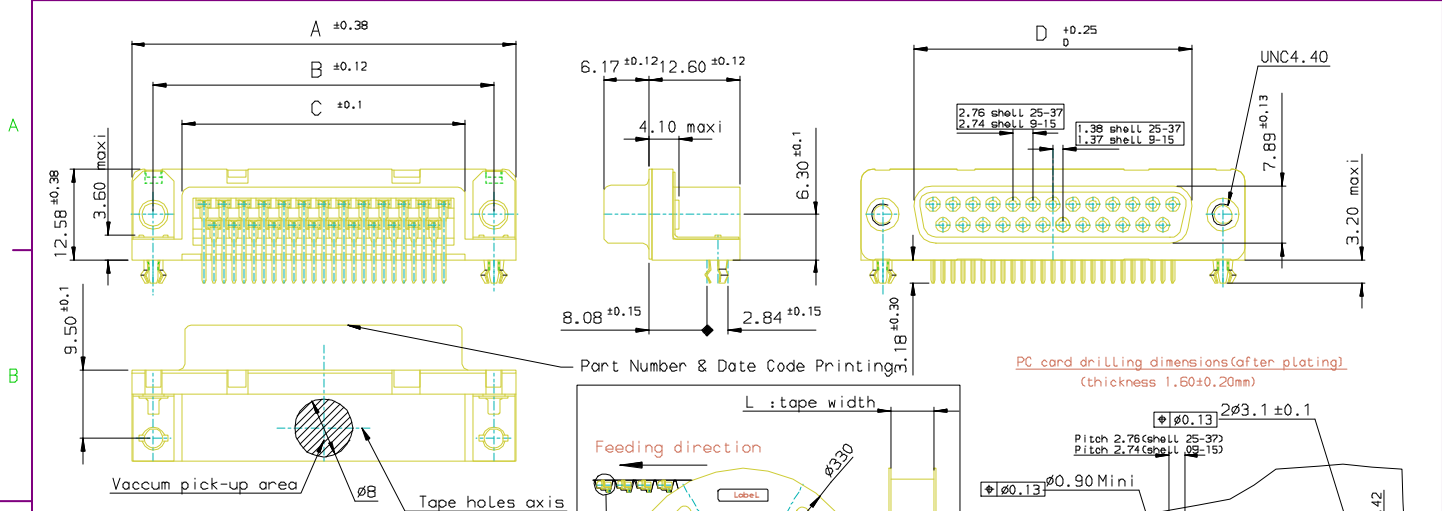
## Excellent Integrated System Limited

Stocking Distributor

Click to view price, real time Inventory, Delivery & Lifecycle Information:

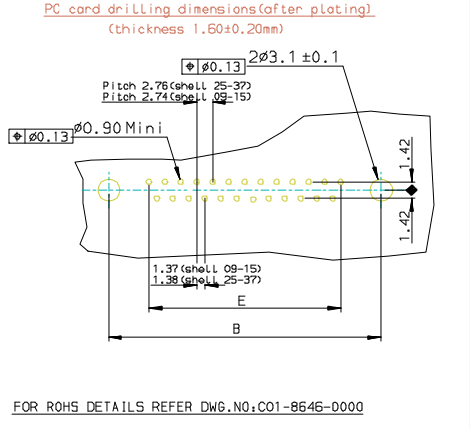
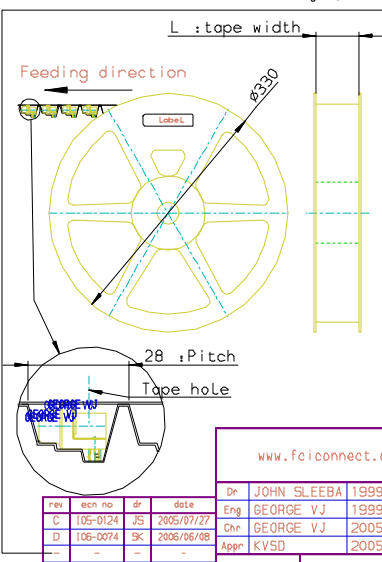
[FCI](#)  
[D09S33E6GX12LF](#)

For any questions, you can email us directly:  
[sales@integrated-circuit.com](mailto:sales@integrated-circuit.com)



SHELL	A±0.38	B±0.12	C±0.10	D±0.25	E±0.07	PART NUMBER	L/Qty
09	30.81	24.99	16.96	16.21	10.96	D09S33E6GX12**44/130	
15	39.14	33.32	25.18	24.54	19.18	D15S33E6GX12**56/110	
25	53.03	47.04	39.12	38.25	33.12	D25S33E6GX12**72/110	
37	69.32	63.50	55.68	54.71	49.68	---	---

**REQUIREMENTS**  
 Technical characteristics:  
 Shell: steel tin / Zinc Cr3 plated  
 Housing: self-extinguishing thermoplastic, ULClass94V0-  
 High temperature  
 Contacts size 20, phosphor bronze, 0.76µ gold on mating end  
 bright tin on termination end over nickel on entire contact  
 Cycles: >500  
 Harpoon: brass, tin plated  
 Metal plate for electrical continuity: brass, tin/Zinc Cr3 plated  
 Nuts: brass, tin/Zinc Cr3 plated  
**Electrical characteristics:**  
 max. current rating: 5A  
 Test voltage: 1000V  
 Rated voltage: 300V  
 Contact resistance: <15mΩ  
 Shell resistance: <5mΩ  
 Insulation resistance: >5000MΩ  
**CLimatic characteristics:**  
 Operating temperature range: -55°C +225°C  
**Dimensions:**  
 in accordance with MIL-C-24308



REV F - 2006-04-17

rev	ecn no	dr	date
C	05-0124	JS	2005/07/27
D	06-0074	SK	2006/06/08
-	-	-	-
-	-	-	-
-	-	-	-
-	-	-	-

www.fciconnect.com		surface ISO 1302 ✓	tolerance std ISO 406 ISO 1101	projection mm
		TOLERANCES UNLESS OTHERWISE SPECIFIED		
Dr JOHN SLEEBA 1999/05/04	ANGULAR	Ø.X	±0.1	size A3 Scale 1:1
Eng GEORGE VJ 1999/05/04	LINEAR	Ø.XX	±0.1	ECN -
Chr GEORGE VJ 2005/07/27	MM ±1	Ø.XXX	±0.1	
Appr KVSD 2005/07/27	Product family	D-SUB		Spec ref -
<b>FCI</b>	Title	SOCKET CONNECT.DELTA D RIGHT ANGLE		Rev. D
	TAPE and REEL packaging	no		Part no C01-8646-0663
	catalog no	DELTA-D	CUSTOMER	sheet 1 of 1