

Excellent Integrated System Limited

Stocking Distributor

Click to view price, real time Inventory, Delivery & Lifecycle Information:

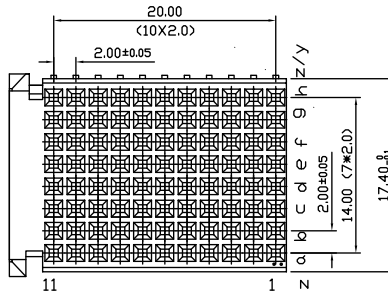
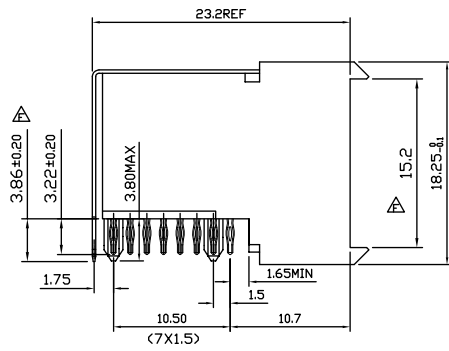
[FCI](#)
[HM2R89PA810FN9LF](#)

For any questions, you can email us directly:
sales@integrated-circuit.com

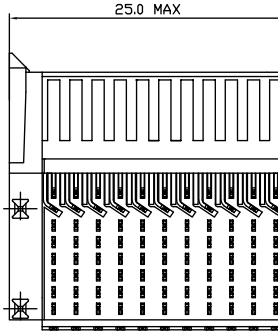
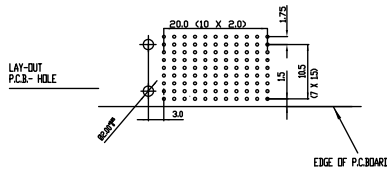
Tous droits strictement réservés. Reproduction ou communication à des tiers interdite sous quelque forme que ce soit sans autorisation écrite du Propriétaire. Propriété de c FCI. Droits de reproduction FCI.



All rights strictly reserved. Reproduction or issue to third parties in any form whatever is not permitted without written authority from the proprietor. Property of FCI. Copyright FCI.



PERFORMANCE CHARACTERISTICS
 CURRENT RATING 1.5A AT 20°C (FULLY LOADED)
 1 A AT 70°C (FULLY LOADED)
 RATED VOLTAGE : 500 V AC (CONT / CONT)
 OPERATING TEMPERATURE : -55°C TO 125°C
 CONTACT RESISTANCE 20 MΩ MAX
 INSERTION FORCE : 0.75N MAX/CONT
 EXTRACTION FORCE : 0.15N MIN/CONT
 INSULATION RESISTANCE : 10⁴ MΩ MIN



- NOTES 1'**
- LEAD FREE INDICATOR LF=LEAD FREE
 - PERFORMANCE LEVEL INDICATOR (REF: IEC 60320 28244-002)
 - THIS PRODUCT IS CSA APPROVED. THIS PRODUCT IS UL RECOGNIZED.
 - FOR RECOMMENDED PTH DIMENSIONS REFER DRAWING : BS-A201572.001
 - THIS PRODUCT (LF) MEETS EUROPEAN UNION DIRECTIVES AND OTHER COUNTRY REGULATIONS AS DESCRIBED IN GS-22-008

www.fciconnect.com		tolerance 1DEC #02 1DEC 2DEC #01 2DEC ANGLES 45° HOEKEN	projection 	MM
Dr	M.Fret	04-01-00	Product family	MILLIPICS
Eng			Spec ref	
Chr			Material	
Appr			ECN	
Q			size	A4
U			Scale	3/1
+			Rev.	F
1			MPACS 8+2R RA RCP CONN TYPE F/WITH SHIELDED	BS,C ,202260,022
2			catalog no	HM2R89PA810F----
3			CUSTOMER	sheet 1 of 1