

Excellent Integrated System Limited

Stocking Distributor

Click to view price, real time Inventory, Delivery & Lifecycle Information:

[FCI](#)

[62469-050](#)

For any questions, you can email us directly:

sales@integrated-circuit.com

PRODUCT NO.	DIM. "A"	DIM. "B"
62469-020	182.36	247.24
62469-025	232.36	297.24
62469-030	282.36	347.24
62469-035	332.36	397.24
62469-040	382.36	447.24
62469-050	500	564.88
62469-150	1500	1564.88

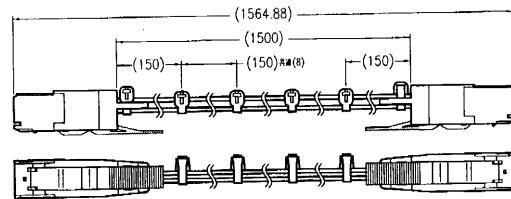
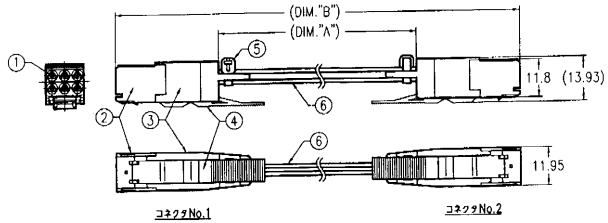
REVISIONS				
REV	DESCRIPTION	ECN	BY	DATE
A	RELEASED	J90031	Y.K	1/26/99
B	REVISED	J90123	Y.K	4/14/99
C	REVISED	J00689	Y.K	8/5/00

部品表

No.	PART NO.	品名	数量
①	62435-101	MINI COAX FEMALE STW CONTACT KIT	12
②	62471-001	CABLE CONN. MINI COAX HSG 3x2	2
③	70246-001	CABLE COVER MINI COAX	2
④	70289-001	LATCH CABLE CONN.	2
⑤	—#—	タイラップ	2, 11
⑥	—#—	同軸ケーブル (0.8DS-PBE 住友電工業)	6

配線表

コネクタNo.1	コネクタNo.2
1a	3a
2a	2a
3a	1a
1b	3b
2b	2b
3b	1b



注記

- 本品は、MINI COAX と同軸ケーブルの ASSY品 (P/N 62470-XXX) 6本とハウジング、カバー、ラッチを装着したケーブル ASSY品である。
- 62469-150 は、図示の同軸ケーブル部をタイラップにて束ねた製品である。

DO NOT SCALE PRINT THIS INFORMATION IS CONFIDENTIAL AND IS DISCLOSED TO YOU ON CONDITION THAT NO FURTHER DISCLOSURE IS MADE BY YOU TO OTHER THAN FCI PERSONNEL WITHOUT WRITTEN AUTHORIZATION FROM FCI JAPAN K.K.

SHEET INDEX	ISSUE SH. NO.	TOLERANCES UNLESS OTHERWISE SPECIFIED	MAT	DR	ENGR	DATE	CUSTOMER COPY
		±0.2	—	—	Y. Kawanaka	9/25/00	☐
LINEAR				CHK	Y. Kawanaka	9/14/00	THRU ANGLE PROD
ANGLES		±2°	—	—	Y. Kawanaka	9/14/00	UNIT MM

Electronics
FCI
 FRAMATOME GROUP

TITLE: METRAL MINI COAX FEMALE STW CABLE CONN. ASSY

SCALE: 1/1 SIZE: B DWG. NO.: 62469 REV: C SHEET: 1 of 1