

Excellent Integrated System Limited

Stocking Distributor

Click to view price, real time Inventory, Delivery & Lifecycle Information:

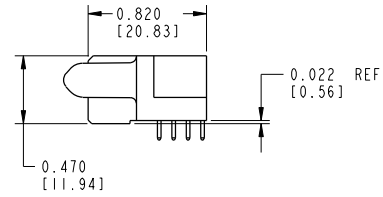
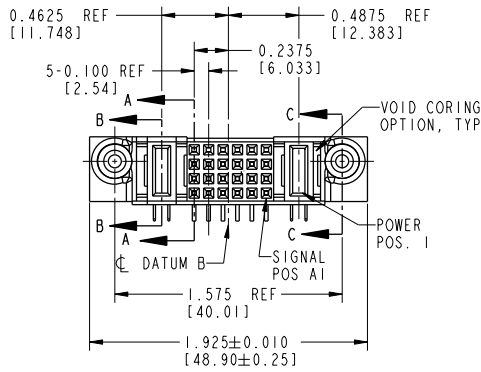
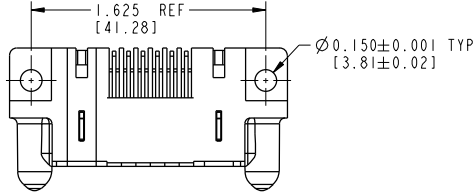
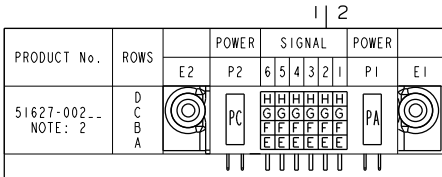
[FCI](#)
[51627-002](#)

For any questions, you can email us directly:
sales@integrated-circuit.com

Tous droits strictement réservés. Reproduction ou communication à des tiers interdite sans quelque forme que ce soit sans autorisation écrite du propriétaire. Propriété de c FCI. Droits de reproduction FCI.



All rights strictly reserved. Reproduction or issue to third parties in any form whatsoever is not permitted without written authority from the proprietor. Property of FCI. Copyright FCI.



CODE	DIM "M" MATING LENGTH	CONTACT TYPE
PA	0.042	POWER
PC	0.092	POWER
E	N/A	SIGNAL
F	N/A	SIGNAL
G	N/A	SIGNAL
H	N/A	SIGNAL

mat'l code				SEE NOTES		tolerances unless otherwise specified		CUSTOMER	
lfr	ecn no.	dr	date	linear	.XX±.01/0.X±0.3	projection	www.fciconnect.com		
A	DG06-0159	JMG	04/10/06	angles	.XXX±.005/0.XXX±0.13	COPY	title IP + 24S + 1P		
				dr	.XXX±.005/0.XXX±.051	MM	RIGHT ANGLE SOLDER RECEPTACLE		
				enr	0°±2°	scale	product family	PwrBlade	code
				chr	JM GUO 04/10/06	1:1	size	dwg no	sheet
				appd	SLUO 04/10/06		A	51627-002	213
					BEER FU 04/10/06				1 of 3
					JOSEPH HSIA 04/10/06				
sheet index	revision sheet	A	A	A					
		1	2	3					

CONFIDENTIAL

1 | 2

Pro/E

PDM: Rev: A

STAT US: Released

Printed: Dec 20, 2010

1 | 2 3 | 4

Tous droits strictement réservés. Reproduction ou communication à des tiers interdite sans quelque forme que ce soit sans autorisation écrite du propriétaire. Propriété de c FCI. Droits de reproduction FCI.

All rights strictly reserved. Reproduction or issue to third parties in any form whatsoever is not permitted without written authority from the proprietor. Property of FCI. Copyright FCI.

FCI

B

A

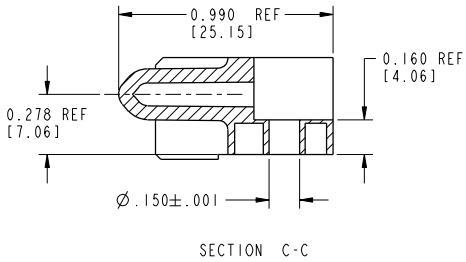
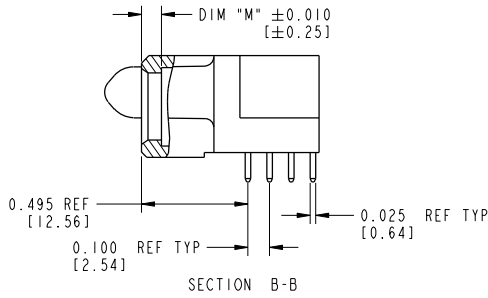
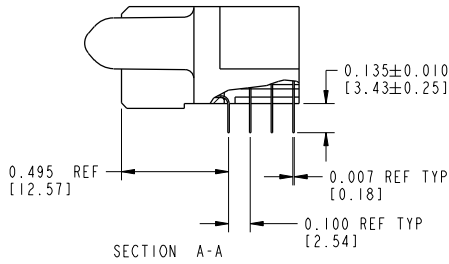
B

1 | 2

3 |

4

PRODUCT NUMBER
51627-002--
NOTE: 2



CONNECTOR NOTES:

1. HOUSING MATERIAL: UL 94 V-0 GLASS FILLED HIGH TEMP THERMOPLASTIC
POWER CONTACT MATERIAL: COPPER ALLOY
SIGNAL CONTACT MATERIAL: COPPER ALLOY
2. 51627-002;51627-002LF;51627-002GLF PLATING SPEC. SEE PRINT:10064183
3. "MANUFACTURER" NAME, P/N, AND DATE CODE TO APPEAR ON THIS SURFACE
4. PRODUCT SPECIFICATION GS-12-149

PCB NOTES:

5. ALL DIMENSIONS ARE BASIC UNLESS OTHERWISE SPECIFIED.
6. ALL THROUGH HOLES ARE LOCATED WITH A TRUE POSITION OF 0.004 [0.10]
7. ALL HOLE DIAMETERS ARE FINISHED HOLE SIZE
8. Ø0.158[4.01] THROUGH HOLES ARE UNPLATED.
9. Ø0.0453±0.0010 [1.151±0.025] DRILLED HOLES PLATED WITH 0.0003 [0.008] MIN SnPb OVER 0.001 [0.03] TO 0.003 [0.08] Cu PLATING TO ACHIEVE A Ø0.040±0.003 [1.02±0.07] HOLE.

CONFIDENTIAL

mat'l code				SEE NOTES		tolerances unless otherwise specified		CUSTOMER		FCI		www.fciconnect.com	
lfr	ecm no.	dr	date	linear	.XX±.01/0.X±0.3	projection	COPY	title		IP + 24S + 1P		RIGHT ANGLE SOLDER RECEPTACLE	
A				angles	.XXX±.005/0.XX±0.13	INCH/MM		product family		PwrBlade		code	
				dr	0°±2°	scale	3:2	size		A		213	
				enr	JM GUO	date drawn		dwg no		51627-002		sheet	
				chr	SLUO	04/10/06		sheet		2			
				appd	BEER FU	04/10/06							
					JOSEPH HSIA	04/10/06							
sheet index	revision sheet												

Pro/E

PDM: Rev: A

STAT

US: Released

22526

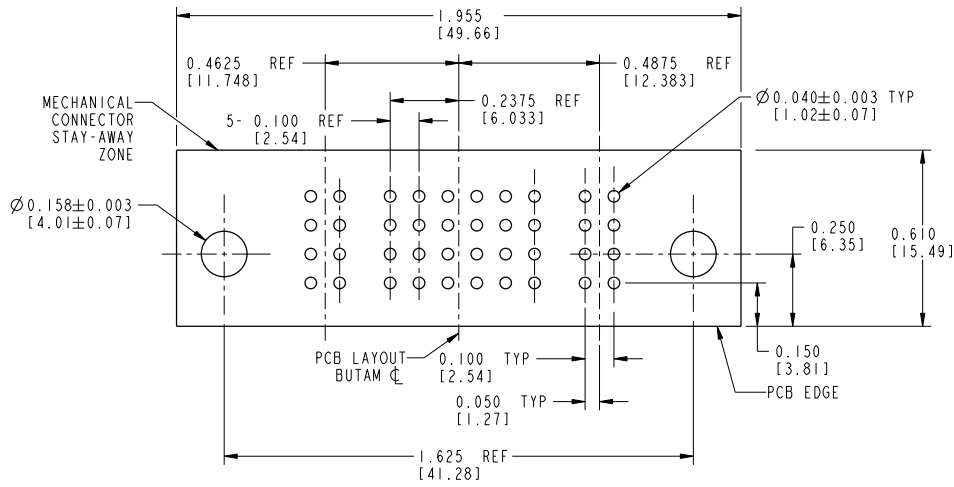
Printed: Dec 20, 2010

Tous droits strictement réservés. Reproduction ou communication à des tiers interdite sans quelque forme que ce soit sans autorisation écrite du propriétaire. Propriété de c FCI. Droits de reproduction FCI.

All rights strictly reserved. Reproduction or issue to third parties in any form whatsoever is not permitted without written authority from the proprietor. Property of FCI. Copyright FCI.



PRODUCT NUMBER
51627-002--
NOTE: 2



RECOMMENDED PCB LAYOUT

CONFIDENTIAL

mat'l code				SEE NOTES		tolerances unless otherwise specified		CUSTOMER		FCI www.fciconnect.com	
ltr	ecn no.	dr	date	linear	.XX±.01/0.X±0.3	projection	COPY		title IP + 24S + 1P		
A				angles	.XXX±.005/0.XXX±0.13	INCH/MM		RIGHT ANGLE SOLDER RECEPTACLE		product family PwrBlade	
				dr	.XXXX±.0005/0.XXX±.051	scale 1:1		size		code 213	
				enr	0°±2°			dwg no		sheet 3	
				chr	JM GUO 04/10/06			A		51627-002	
				appd	SLUO 04/10/06						
					BEER FU 04/10/06						
					JOSEPH HSIA 04/10/06						
sheet index	revision sheet										

Pro/E

PDM: Rev: A

STAT

code code 22526
US: Released

Printed: Dec 20, 2010