

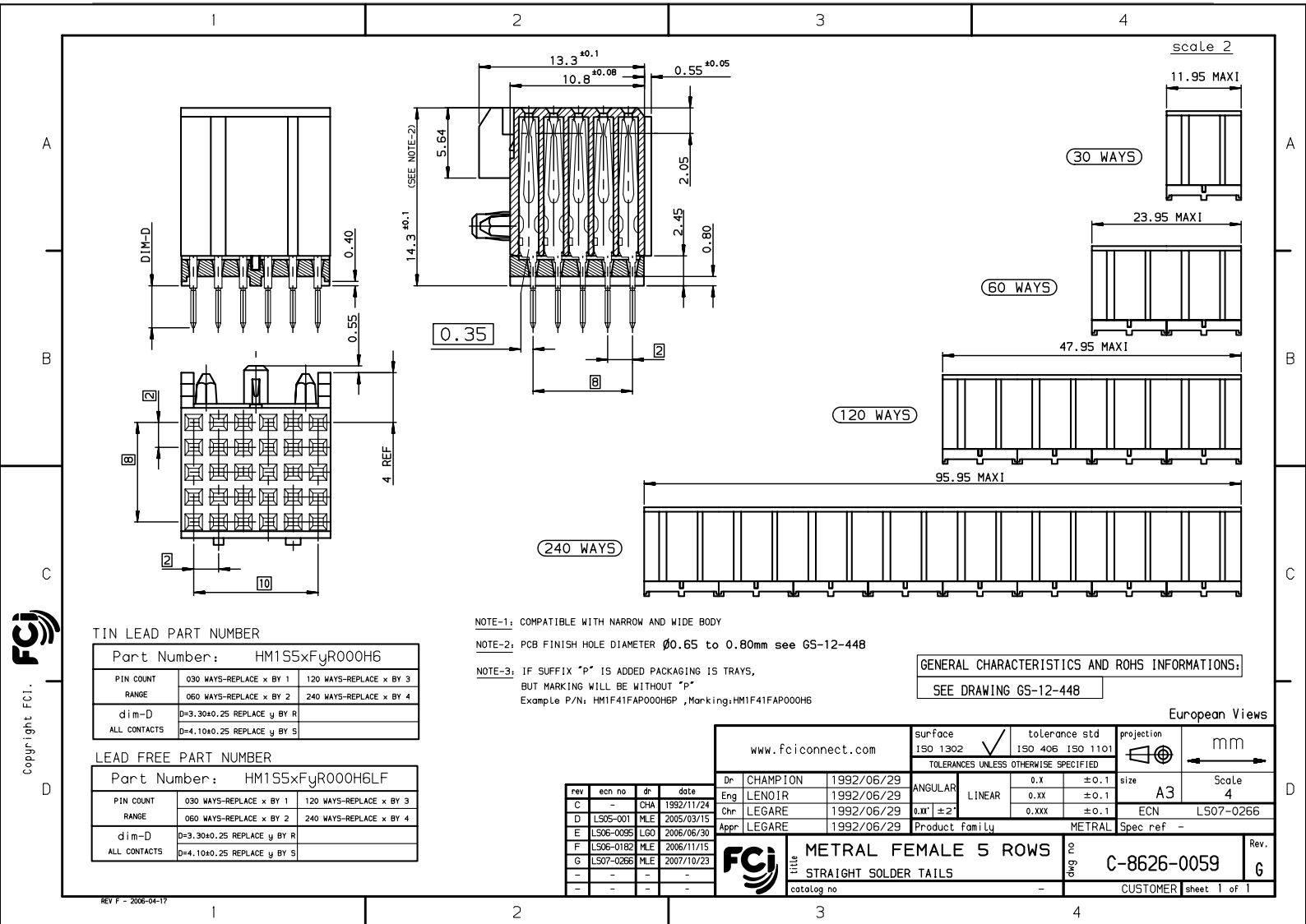
Excellent Integrated System Limited

Stocking Distributor

Click to view price, real time Inventory, Delivery & Lifecycle Information:

[FCI](#)
[HM1S51FER000H6PLF](#)

For any questions, you can email us directly:
sales@integrated-circuit.com



TIN LEAD PART NUMBER

Part Number:	HM1S5xFyR000HG	
PIN COUNT	030 WAYS-REPLACE x BY 1	120 WAYS-REPLACE x BY 3
RANGE	060 WAYS-REPLACE x BY 2	240 WAYS-REPLACE x BY 4
dim-D	D=3.30±0.25 REPLACE y BY R	
ALL CONTACTS	D=4.10±0.25 REPLACE y BY S	

LEAD FREE PART NUMBER

Part Number:	HM1S5xFyR000H6LF	
PIN COUNT	030 WAYS-REPLACE x BY 1	120 WAYS-REPLACE x BY 3
RANGE	060 WAYS-REPLACE x BY 2	240 WAYS-REPLACE x BY 4
dim-D	D=3.30±0.25 REPLACE y BY R	
ALL CONTACTS	D=4.10±0.25 REPLACE y BY S	

NOTE-1: COMPATIBLE WITH NARROW AND WIDE BODY

NOTE-2: PCB FINISH HOLE DIAMETER Ø0.65 to 0.80mm see GS-12-448

NOTE-3: IF SUFFIX "P" IS ADDED PACKAGING IS TRAYS, BUT MARKING WILL BE WITHOUT "P"
Example P/N: HM1F41FAP000H6P ,Marking:HM1F41FAP000HG

GENERAL CHARACTERISTICS AND ROHS INFORMATIONS:

SEE DRAWING GS-12-448

European Views

www.fciconnect.com		surface 150 1302	tolerance std 150 406 150 1101	projection mm	size A3	Scale 4
		TOLERANCES UNLESS OTHERWISE SPECIFIED				
Dr	CHAMPION	1992/06/29	ANGULAR	0.X	±0.1	
Eng	LENOIR	1992/06/29	LINEAR	0.XX	±0.1	
Chr	LEGARE	1992/06/29	0.XX	±2	±0.1	ECN L507-0266
Appr	LEGARE	1992/06/29	Product family		METRAL	Spec ref -
FCI logo			METRAL FEMALE 5 ROWS		Part no	C-8626-0059
			STRAIGHT SOLDER TAILS		Rev.	6
catalog no					CUSTOMER sheet 1 of 1	

REV F - 2006-04-17