

## **Excellent Integrated System Limited**

Stocking Distributor

Click to view price, real time Inventory, Delivery & Lifecycle Information:

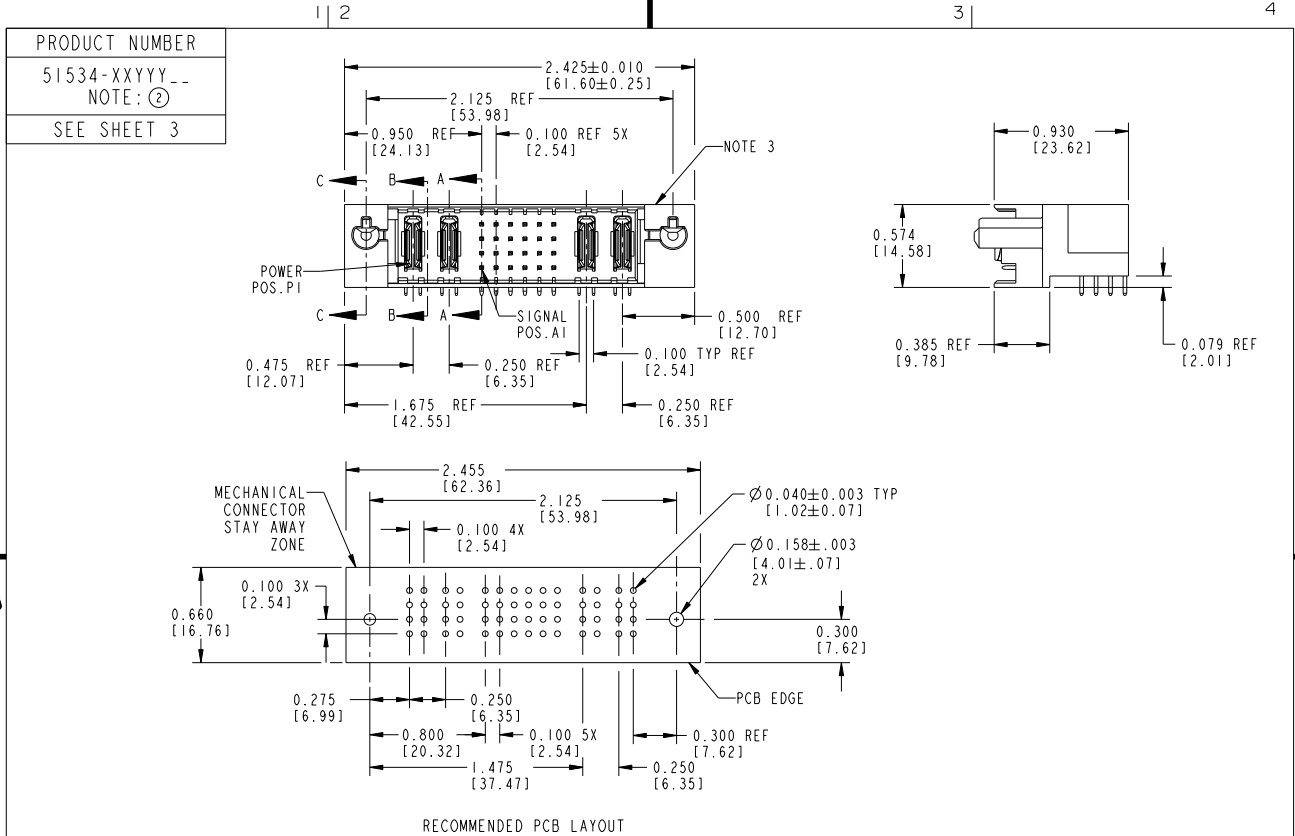
[FCI](#)  
[51534-XX002](#)

For any questions, you can email us directly:  
[sales@integrated-circuit.com](mailto:sales@integrated-circuit.com)

Tous droits strictement réservés. Reproduction ou communication à des tiers interdite sous quelque forme que ce soit sans autorisation écrite du propriétaire. Propriété de c FCI. Droits de reproduction FCI.



All rights strictly reserved. Reproduction or issue to third parties in any form whatsoever is not permitted without written authority from the proprietor. Property of FCI. Copyright FCI.



mat'l code		NOTE 1		tolerances unless otherwise specified		CUSTOMER		FCI	
ltr	ecn no.	dr	date	linear	.XX±.01/.X±.3	projection	COPY	www.fciconnect.com	
H	DG06-0011	CS	01/09/06	angles	.XXX±.005/.XX±.13			title 2P + 24S + 2P	
J	DG08-0266	WD	09/21/08		.XXXX±.0020/.X±.051			RIGHT ANGLE SOLDER HEADER	
				dr	D. WOLFORD 10/14/98	INCH/MM		product family PWRBLADE	
				enr	J. BROWN 10/14/98	scale 1:1		code 213	
				chr	J. BROWN 10/14/98			sheet 1 of 3	
				appd	J. BROWN 10/14/98			size 51534	
sheet index	revision sheet	J 1	J 2	J 3					

1 | 2

Pro/E

PDM: Rev:3

STAT: US: Released

Printed: Dec 20, 2010

Tous droits strictement réservés. Reproduction ou communication à des tiers interdite sans que la forme que ce soit sans autorisation écrite du propriétaire. Propriété de c FCI. Droits de reproduction FCI.

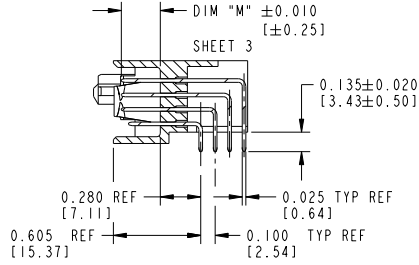
All rights strictly reserved. Reproduction or issue to third parties in any form whatsoever is not permitted without written authority from the proprietor. Property of FCI. Copyright FCI.

1 | 2

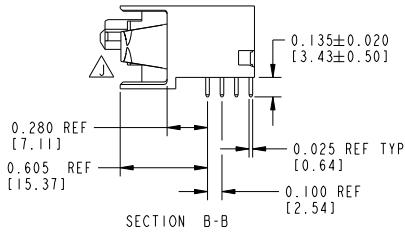
3 |

4

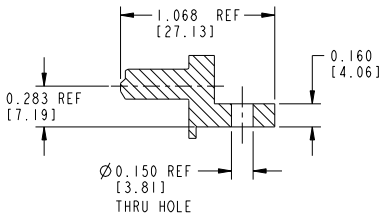
PRODUCT NUMBER
51534-XXYY --
NOTE: ②
SEE SHEET 3



SECTION A-A



SECTION B-B



SECTION C-C

mat'l code				NOTE 1		tolerances unless otherwise specified		CUSTOMER		FCI	
ltr	ecm no.	dr	date	linear	.XX±.01/.X±.3	projection	COPY		www.fciconnect.com		
J				angles	.XXX±.005/.XX±.13		title		2P + 24S + 2P		
				dr	.XXX±.0020/.X±.051		RIGHT ANGLE SOLDER HEADER				
				enr	0°±2°	INCH/MM		product family		PWRBLADE	
				chr	D. WOLFORD 10/14/98	scale		size		code	
				appd	J. BROWN 10/14/98	1:1		A		213	
					J. BROWN 10/14/98			51534		sheet	
										2	
sheet index	revision sheet										

1 | 2

Pro/E

**PDM: Rev:3**

STAT: **Released**

Printed: Dec 20, 2010

1 | 2

3 |

4

PRODUCT No.	ROWS	E1	POWER		SIGNAL						POWER		E2		
			P1	P2	1	2	3	4	5	6	P3	P4			
51534-XX001 NOTE: ②	D C B A		PA	PA	UUUUUU	TTTTTT	SSSSSS	RRRRRR	UUUUUU	TTTTTT	SSSSSS	RRRRRR	PA	PA	

PRODUCT No.	ROWS	E1	POWER		SIGNAL						POWER		E2		
			P1	P2	1	2	3	4	5	6	P3	P4			
51534-XX002 NOTE: ②	D C B A		PA	PA	UUUUUU	TTTTTT	SSSSSS	RRRRRR	UUUUUU	TTTTTT	SSSSSS	RRRRRR	PA	PA	

PCB NOTES:

- ALL DIMENSIONS ARE BASIC UNLESS OTHERWISE SPECIFIED.
- ALL THROUGH HOLES ARE LOCATED WITH A TRUE POSITION OF 0.004[0.10]
- ALL HOLE DIAMETERS ARE FINISHED HOLE SIZE
- Ø0.158 [4.01] THROUGH HOLES ARE UNPLATED
- Ø0.0453±0.0010 [1.151±0.025] DRILLED HOLES PLATED WITH 0.0003[0.008] MIN SnPb OVER 0.001[0.03] TO 0.003[0.08] Cu PLATING TO ACHIEVE A 0.040±0.003 [1.02±0.07] HOLE
- △SYMBOL WILL BE NEXT TO ANY DIMENSION, VIEW, OR NOTE WHICH HAS BEEN MODIFIED WITH THE CURRENT DRAWING REVISION.

CONNECTOR NOTES:

- HOUSING MATERIAL: UL94 V-0 GLASS FILLED HIGH TEMP. THERMOPLASTIC.  
 SIGNAL PIN MATERIAL: COPPER ALLOY.  
 POWER CONTACT MATERIAL: COPPER ALLOY.
- MANUFACTURER'S NAME, P/N, AND DATE CODE TO APPEAR ON THIS SURFACE.
- SEE ITEM 1 & 2 IN PRINT 10064183 FOR PLATING SPEC OF 51534-XX00X AND 51534-XX00XLF RESPECTIVELY.
- PRODUCT SPECIFICATION GS-12-149.

ITEM NO.	DIM "M"	CONTACT TYPE
E	0.220 [5.59]	SIGNAL
F	0.220 [5.59]	SIGNAL
R	0.270 [6.86]	SIGNAL
S	0.270 [6.86]	SIGNAL
T	0.270 [6.86]	SIGNAL
U	0.270 [6.86]	SIGNAL
PA	N/A [N/A]	POWER

mat'l code				NOTE 1		tolerances unless otherwise specified		CUSTOMER		FCI	
ltr	ecn no.	dr	date	linear	.XX±.01/.X±.3	projection	COPY		www.fciconnect.com		
J				angles	.XXX±.005/.XX±.13		title		2P + 24S + 2P		
				dr	.XXX±.0020/.X±.051		product family		RIGHT ANGLE SOLDER HEADER		
				enr	0°±2°	INCH/MM	size		PWRBLADE		
				chr	D. WOLFORD 10/14/98	scale	code		213		
				appd	J. BROWN 10/14/98	1:1	sheet		3		
					J. BROWN 10/14/98		size		51534		
sheet index	revision sheet										

1 | 2

Pro/E

PDM: Rev:3

STAT: US: Released

Printed: Dec 20, 2010

Tous droits strictement reserves. Reproduction ou communication a des tiers interdite sous quelque forme que ce soit sans autorisation ecrite du proprietaire. Propriete de c FCI. Droits de reproduction FCI.



All rights strictly reserved. Reproduction or issue to third parties in any form whatever is not permitted without written authority from the proprietor. Property of FCI. Copyright FCI.